


2015 Latest Updated 70-410 Study Guide Free Download in Braindump2go (371-380)

MICROSOFT OFFICIAL: New Updated 70-410 Exam Questions from Braindump2go 70-410 pdf dumps and 70-410 vce dumps! Welcome to download the newest Braindump2go 70-410 vce&pdf dumps: <http://www.braindump2go.com/70-410.html> (471 Q&As) Real Latest 70-410 Exam Questions Updated By Official Microsoft Exam Center! Braindump2go Offers 70-410 Dumps sample questions for free download now! You also can visit our website, download our premium Microsoft 70-410 Exam Real Answers, 100% Exam Pass Guaranteed! Exam Code: 70-410Exam Name Installing and Configuring Windows Server 2012 Certification Provider: MicrosoftCorresponding Certifications: MCSA, MCSA: Windows Server 2012, MCSE, MCSE: Desktop Infrastructure, MCSE: Private Cloud, MCSE: Server InfrastructureKeywords:70-410 Dumps,70-410 Exam Questions,70-410 VCE,70-410 VCE Free,70-410 PDF,70-410 Lab Manual PDF,70-410 Practice Exams,70-410 Practice Tests,70-410 Installing and Configuring Windows Server 2012

Installing and Configuring Windows Server 2012 R2 Exam: 70-410



Product Description Exam Number/Code: 70-410

Exam Number/Code: 70-410

"Installing and Configuring Windows Server 2012 R2 Exam", also known as 70-410 exam, is a Microsoft Certification. With the complete collection of questions and answers, Braindump2go has assembled to take you through 471 Q&As to your 70-410 Exam preparation. In the 70-410 exam resources, you will cover every field and category in Microsoft MCSA helping to ready you for your successful Microsoft Certification.

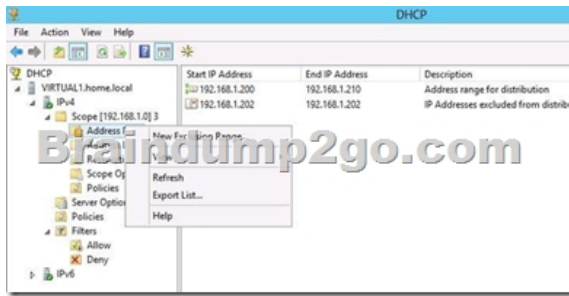
Free Demo Download

Braindump2go offers free demo for 70-410 exam (Installing and Configuring Windows Server 2012 R2 Exam). You can check out the interface, question quality and usability of our practice exams before you decide to buy it.

☒ Printable PDF ☒ Premium VCE + VCE Simulator

Questions and Answers : 471
Q&As
Updated: Sep 03, 2015
\$429.99 **\$99.99**
[PDF DEMO](#)
[CHECK OUT](#)

QUESTION 371A company's server deployment team needs to install fourteen Windows Server 2012 R2 to handle the expected increase in holiday traffic. The team would like the option of switching the servers between Server Core and Full GUI servers and do not want to be locked in to their first choice. The server team would like four of the servers to include the Windows 8 Shell. Which installation option is required for these servers? A. Server Core B. Desktop Experience C. Server with a GUI D. Minimal Server Interface Answer: B Explanation: The Desktop Experience installation option includes the Windows 8 Shell feature. This installation option also includes other features available for installation not found in the other three; such as Themes, Windows Store and support for Windows Store apps, and Windows Media Player. Quick Tip: To completely remove a feature and the binary files from the disk, use the Windows PowerShell command Uninstall-WindowsFeature. For example, to remove Desktop Experience: Uninstall-WindowsFeature Desktop-Experience -Remove <http://technet.microsoft.com/en-us/library/hh831786.aspx> <http://mcpmag.com/articles/2013/01/22/70-410-win2012-install.aspx> QUESTION 372A company's network administrator needs to ensure a specific IP address is never assigned by a Windows Server 2012 R2 DHCP server to any device connecting to the network. Which of the following should the administrator configure on the Windows Server 2012 R2 DHCP server? A. Reservation B. Scope options C. NAP D. Scope properties Answer: A Explanation: Configuring an IP address as a reservation will restrict a DHCP server's assignment of that address unless a specific MAC address makes a request for the address. Exclusion is for not use the IP Address or range inside the Scope Pool, Filter is for not use the MAC Address or range. Quick Tip: Policies can also be defined per scope or server. Policy based assignment (PBA) allows an administrator to group DHCP clients by specific attributes based on fields contained in the DHCP client request packet. This feature allows for targeted administration and greater control of configuration parameters delivered to network devices. <http://technet.microsoft.com/en-us/library/jj200226.aspx> <http://mcpmag.com/articles/2013/02/12/70-410-dhcp.aspx> Another correct answer? Create a Exclusion Range? You decide... but that option is not at the options list at this question.



QUESTION 373A company's server virtualization team needs to provision a series of Hyper-V workloads to use existing network storage arrays. The team has chosen to use Fibre Channel ports within the guest operating systems. Which of the following Windows Server versions can be used as guest operating systems when using Hyper-V Fibre Channel ports? A. 2003 R2 B. 2008 C. 2003 D. 2012 Answer: B Explanation: Windows Server 2008, 2008 R2, and 2012 R2 can be guest operating systems when using Hyper-V Fibre Channel host bus adapters (HBAs). Updated HBA drivers are needed along with NPIV-enabled (N_Port ID Virtualization) SANs. Quick Tip: Virtual Fibre Channel logical units cannot be used as boot media.

<http://technet.microsoft.com/en-us/library/hh831413.aspx> <http://mcpmag.com/articles/2013/02/05/70-410-win2012-fibre.aspx>

QUESTION 374A company's server deployment team needs to introduce many new Windows Server 2012 R2 domain controllers throughout the network into a single Windows Server 2008 R2 domain. The team has chosen to use Windows PowerShell. Which Windows PowerShell module includes the command-line options for installing domain controllers? A. AD DS Administration cmdlets B. AD DS Deployment cmdlets C. AD CS Deployment cmdlets D. AD DS Administration cmdlets Answer: B Explanation: First use the Import-Module ADDSDeployment command in PowerShell--it includes the cmdlets needed to add new domain controllers. Then run Install-ADDSDomainController along with the required arguments. Quick Tip: DCPromo.exe has been deprecated but can still be used along with an answer file, and ADPrep.exe runs automatically when needed (but can be run with elevated rights for more control). <http://technet.microsoft.com/en-us/library/hh994618.aspx>

<http://mcpmag.com/articles/2013/02/19/70-410-win2012-ad.aspx> QUESTION 375A company's server administration team would like to take advantage of the newest file systems available with Windows Server 2012 R2. The team needs a file system capable of managing extremely large data drives that can auto-detect data corruption and automatically perform needed repairs without taking a volume offline. Which file system should the server administration team choose? A. NFS B. DFSC. NTFS D. ReFS Answer: D Explanation: The ReFS (Resilient File System) is capable of managing extremely large data drives (1 YB Yottabyte), can auto-detect data corruption, and automatically perform needed repairs without taking the volume offline. Quick Tip: The command fsutil fsinfo volumeinfo x: will display the volume file system. ReFS is only intended for data drives and not compatible with all Windows Server 2012 R2 file system technologies, however it is compatible with the new Storage Spaces.


<http://technet.microsoft.com/en-us/library/hh831724.aspx> <http://mcpmag.com/articles/2013/01/29/70-410-win2012-file.aspx>

QUESTION 376A company's server security team needs a solution that will prevent users from installing and using unauthorized applications on their Windows 8 desktop computers. Which technology should the team choose? A. Starter GPOs B. Group Policy Objects C. Software Restriction Policies D. AppLocker Answer: D Explanation: AppLocker (Application Locker) can help prevent malicious (malware) and unsupported applications from affecting computers. These include executable files, scripts, Windows Installer files, DLLs, Packaged apps and Packaged app installers. Quick Tip: AppLocker is also supported by Windows Server 2008 R2 and Windows 7. <http://technet.microsoft.com/en-us/library/hh831440.aspx>

<http://mcpmag.com/articles/2013/02/26/controlling-applications.aspx> ExamRef QUESTION 376 You are attempting to delete a global security group in the Active Directory Users and Computers console, and the console will not let you complete the task. Which of the following could possibly be causes for the failure? (Choose all answers that are correct.) A. There are still members in the group. B. One of the group's members has the group set as its primary group. C. You do not have the proper permissions for the container in which the group is located. D. You cannot delete global groups from the Active Directory Users and Computers console. Answer: BC Explanation: A. Incorrect: It is possible to delete a group that has members. B. Correct: If any member sets the group as its primary group, then the system does not permit the group to be deleted. C. Correct: You must have the appropriate Active Directory permissions for the container in which the group is located to delete it. D. Incorrect: It is possible to delete groups using the Active Directory Users and Groups console. QUESTION 377 In a domain running at the Windows Server 2012 R2 domain functional level, which of the following security principals can members of a global group? (Choose all answers that are correct.) A. Users B. Computers C. Universal groups D. Global groups Answer: AB Explanation: A. Correct: Users can be security

principals in a global group. B. Correct: Computers can be security principals in a global group. C. Incorrect: Universal groups cannot be security principals in a global group. D. Correct: Global group can be security principals in a global group. QUESTION 378 Which of the following group scope modifications are never permitted? (Choose all answers that are correct.) A. Global to universal B. Global to domain local C. Universal to global D. Domain local to universal Answer: B Explanation: A. Incorrect: Global to universal group conversions are sometimes permitted. B. Correct: Global to domain local group conversions are never permitted. C. Incorrect: Universal to global group conversions are sometimes permitted. D. Incorrect: Domain local to universal group conversions are sometimes permitted. QUESTION 379 Which of the following is not a correct reason for creating an OU? A. To create a permanent container that cannot be moved or renamed B. To duplicate the divisions in your organization C. To delegate administration tasks D. To assign different Group Policy settings to a specific group of users or computers Answer: A Explanation: A. Correct: The reasons for creating an OU include duplicating organizational divisions, assigning Group Policy settings, and delegating administration. You can easily move or rename an OU at will. B. Incorrect: Duplicating organizational divisions is a viable reason for creating an OU. C. Incorrect: Delegating administration tasks is a viable reason for creating an OU. D. Incorrect: Assigning Group Policy settings is a viable reason for creating an OU. QUESTION 380 Which of the following groups do you use to consolidate groups and accounts that either span multiple domains or the entire forest? A. Global B. Domain local C. Built-in D. Universal Answer: D Explanation: A. Incorrect: Global groups cannot contain users from other domains. B. Incorrect: Domain local groups cannot have permissions for resources in other domains. C. Incorrect: Built-in groups have no inherent cross-domain qualities. D. Correct: Universal groups, like global groups, are used to organize users according to their resource access needs. You can use them to organize users to facilitate access to any resource located in any domain in the forest through the use of domain local groups. Universal groups are used to consolidate groups and accounts that either span multiple domains or the entire forest. Guaranteed 100% Microsoft 70-410 Exam Pass OR Full Money Back! Braindump2go Provides you the latest 70-410 Dumps PDF & VCE for Instant Download!

Installing and Configuring Windows Server 2012 R2 Exam: 70-410



Questions and Answers : 471 Q&As
Updated: Sep 03, 2015
~~\$429.99~~ **\$99.99**
[PDF DEMO](#)
[CHECK OUT](#)

Product Description Exam Number/Code: 70-410
Exam Number/Code: 70-410

"Installing and Configuring Windows Server 2012 R2 Exam", also known as 70-410 exam, is a Microsoft Certification. With the complete collection of questions and answers, Braindump2go has assembled to take you through 471 Q&As to your 70-410 Exam preparation. In the 70-410 exam resources, you will cover every field and category in Microsoft MCSA helping to ready you for your successful Microsoft Certification.

Free Demo Download

Braindump2go offers free demo for 70-410 exam (Installing and Configuring Windows Server 2012 R2 Exam). You can check out the interface, question quality and usability of our practice exams before you decide to buy it.

☒ **Printable PDF** ☒ **Premium VCE + VCE Simulator**

70-410 PDF Dumps & 70-410 VCE Dumps Full Version Download(471q): <http://www.braindump2go.com/70-410.html>