

[2017-Nov-NewBraindump2go Free 400-151 VCE Instant Download[107-117

2017 November New Cisco 400-151 Exam Dumps with PDF and VCE Free Updated Today! Following are some new 400-151 Questions:
1. [2017 New 400-151 Exam Dumps (PDF & VCE) 410Q&As Download: <https://www.braindump2go.com/400-151.html>
2. [2017 New 400-151 Exam Questions & Answers Download:

<https://drive.google.com/drive/folders/0B75b5xYLjSSNOUtSMndmVjV3czA?usp=sharing> QUESTION 107 FabricPath brings the benefits of routing protocols to Layer 2 network Ethernet environments. Which three options describe advantages of using FabricPath technology? (Choose three.) A. MAC address scalability with conversational learning B. loop mitigation with TTL in the frame field C. Spanning Tree Protocol independence D. 10-Gb/s bandwidth E. Layer 2 extensions between data centers Answer:

ABC QUESTION 108 In the Cisco Nexus 7000 FabricPath domain, one switch becomes the root for the multidestination tree. Cisco FabricPath IS-IS will automatically select root switches for each multidestination tree. One of the parameters that is used to select the root is the system ID. Which two statements are true about the system ID? (Choose two.) A. The system ID is a unique 12-bit value. B. The system ID is a 48-bit value composed of the VDC MAC address. C. A higher system ID is preferred. D. A lower system ID is preferred. Answer: BC QUESTION 109 After configuring FabricPath, the following message appears in the syslog:

%STP-2-L2GW_BACKBONE_BLOCK: L2 Gateway Backbone port inconsistency blocking port port-channel100 on VLAN0010. What is a possible reason for this message? A. Spanning tree must be disabled, and the message indicates that STP is enabled. B. STP is misconfigured. The root guard must be disabled. C. An inferior BPDU was received on a Cisco FabricPath edge port. D. A superior BPDU was received on a Cisco FabricPath edge port. Answer: D

QUESTION 110 Cisco FabricPath switches support ECMP forwarding for known unicast frames. If the destination switch ID can be reached through more than one output interface with equal cost, the forwarding engine uses a hash function to pick one of the interfaces. Which three options are valid for hash input for unicast frames? (Choose three.) A. Use only the source parameters (layer-3, layer-4, or mixed). B. Use the FabricPath switch ID in the FabricPath header. C. Use only the destination parameters (layer-3, layer-4, or mixed). D. Use both the source and the destination parameters (layer-3, layer-4, or mixed). E. Include only Layer 2 input (source or destination MAC address). Answer: ACD

QUESTION 111 In a FabricPath network, known unicast traffic is sent with the outer destination address populated with the destination SID, SSID, and local ID. Which statement describes the outer destination address in the case of unknown unicast? A. The outer destination address is a reserved multicast MAC address known as MC1 (010F.FFC2.02C0). B. The outer destination address is a broadcast address (FFFF.FFFF.FFFF). C. The outer destination address is not required because FabricPath uses the FTag to forward unknown unicast. D. The outer destination address is a reserved multicast MAC address known as MC1 (010F.FFC1.01C0). Answer: D

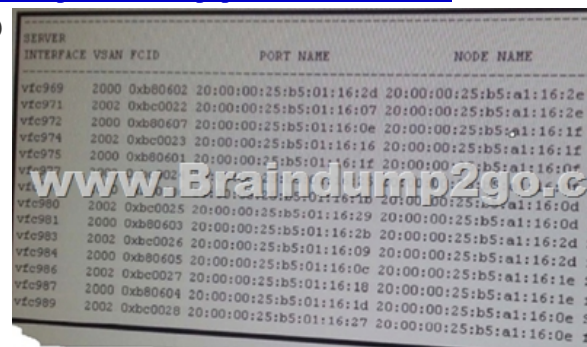
QUESTION 112 The Cisco nexus 1000V Switch uses a multihypervisor licensing approach. Which three statements are true? (Choose three.) A. The Essentials edition comes with a 180-day trial for the Advanced edition. B. An advanced edition license is required for each CPU socket on each VEM. C. The VXLAN gateway is included in the Essential edition license. D. The Cisco Nexus 1000 v switch supports Essential and Advanced license editions. E. Only the Advance edition license is supported with multihypervisor. F. You can migrate the license from a Cisco Nexus 1000V Switch for KVM to a Cisco Nexus 1000V Switch for VMware. Answer: BDF

Explanation:
http://www.cisco.com/c/en/us/td/docs/switches/datacenter/nexus1000/sw/4_2_1_s_v_2_2_2/license/b_Cisco_N1KV_Universal_License_Config/b_Cisco_N1KV_License_Config_521SK111_chapter_01.html

QUESTION 113 Which solution is preferred for predictable traffic in a vMware environment running Cisco Nexus 1000v Series switches? A. end-host mode B. fabric failover mode C. client mode D. server mode E. standalone mode Answer: A

Explanation:
http://www.cisco.com/c/en/us/products/collateral/switches/nexus-1000v-switch-vmware-vsphere/white_paper_c11-558242.html

QUESTION 114 Refer to the exhibit. Which three statements are true? (Choose three.)



SERVER	INTERFACE	VSPAN	FCID	PORT NAME	NODE NAME
vfc969	2000	0xb80602	20:00:00:25:b5:01:16:2d	20:00:00:25:b5:a1:16:2e	
vfc971	2002	0xb80022	20:00:00:25:b5:01:16:07	20:00:00:25:b5:a1:16:2e	
vfc972	2000	0xb80607	20:00:00:25:b5:01:16:0e	20:00:00:25:b5:a1:16:1f	
vfc974	2002	0xb80023	20:00:00:25:b5:01:16:16	20:00:00:25:b5:a1:16:1f	
vfc975	2000	0xb80601	20:00:00:25:b5:01:16:1f	20:00:00:25:b5:a1:16:0e	
vfc976	2002	0xb80024	20:00:00:25:b5:01:16:1b	20:00:00:25:b5:a1:16:0d	
vfc980	2002	0xb80025	20:00:00:25:b5:01:16:29	20:00:00:25:b5:a1:16:0d	
vfc981	2000	0xb80603	20:00:00:25:b5:01:16:29	20:00:00:25:b5:a1:16:0d	
vfc983	2002	0xb80026	20:00:00:25:b5:01:16:2b	20:00:00:25:b5:a1:16:2d	
vfc984	2000	0xb80605	20:00:00:25:b5:01:16:09	20:00:00:25:b5:a1:16:2d	
vfc986	2002	0xb80027	20:00:00:25:b5:01:16:0e	20:00:00:25:b5:a1:16:1e	
vfc987	2000	0xb80604	20:00:00:25:b5:01:16:18	20:00:00:25:b5:a1:16:1e	
vfc989	2002	0xb80028	20:00:00:25:b5:01:16:1d	20:00:00:25:b5:a1:16:0e	

A. Zoning is configured on the upstream SAN switch. B. Storage is attached directly to Cisco UCS. C. There are 14 blades active in the system. D. The Cisco UCS Manager is in switch mode. E. Two separate physical SAN switches are upstream of Cisco UCS. F. There are 7 blades active in the system. G. The Cisco UCS Manager is in end-host mode. H. Zoning is configured on Cisco UCS Manager.

Answer: AFG

QUESTION 115 Which two statements about end-host mode are true? (Choose two.)

A. In end-host mode, if a vNIC is hard pinned to an uplink port and this uplink port goes down, the system repins the vNIC, and the vNIC goes up.

B. End-host mode allows the fabric interconnect to act as an end host to the network, representing all servers (hosts) connected to it through vNICs.

C. End-host mode is the default Ethernet switching mode.

D. In end-host mode, the fabric interconnect runs the Spanning Tree Protocol to avoid loops.

E. In end-host mode, if a vNIC is hard pinned to an uplink port and this uplink port goes down, the system repins the vNIC but the vNIC remains down until manual intervention.

Answer: BC

Explanation:

http://www.cisco.com/c/en/us/solutions/collateral/data-center-virtualization/unified-computing/whitepaper_c11-701962.html

QUESTION 116 Dynamic ARP inspection ensures that only valid ARP requests and responses are relayed. Which three activities does a Cisco NX-OS device perform when DAI is enabled and properly configured? (Choose three.)

A. Intercepts ARP requests and responses only on untrusted ports.

B. Verifies that each of these intercepted packets has a valid IP-to-MAC address binding based only on DHCP snooping binding database or statically created entries.

C. Intercepts ARP requests and responses on all ports.

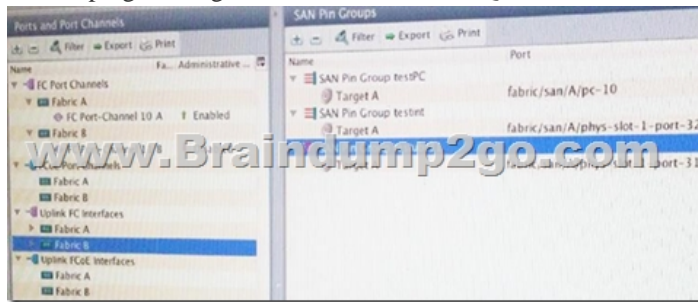
D. Pass-through an invalid ARP packets.

E. Drops invalid ARP packets.

F. Verifies that each of these intercepted packets has a valid IP-to-MAC address binding based only on DHCP snooping binding database.

Answer: ABE

QUESTION 117 Refer to the exhibit. Which two statements are true? (Choose two.)



A. Three pin groups are configured: one for the port-channel 10 in fabric interconnect B, one for int e1/32 in fabric interconnect B, and one for int e1/31 in fabric interconnect B.

B. Changing the target interface for an existing SAN pin group disrupts traffic for all vHBAs that use that pin group. The fabric interconnect performs a log in and log out for the Fibre Channel protocols to repin the traffic.

C. To configure pinning for a server, you must include the SAN pin group in a vNIC policy. The vNIC policy is then included in the service profile assigned to that server. All traffic from the vNIC travels through the I/O module to the specified uplink Fibre channel port.

D. In Fibre Channel switch mode, SAN pin groups are irrelevant. Any existing SAN pin groups are ignored.

E. Edit this to show switch mode.

Answer: BD

Explanation: Ref:

http://www.cisco.com/c/en/us/td/docs/unified_computing/ucs/sw/gui/config/guide/1-0-2/b_GUI_Config_Guide/GUI_Config_Guide_chapter19.html

Also see PDF: Configuring SAN Pin Groups!!!RECOMMEND!!!1.[2017 New 400-151 Exam Dumps (PDF & VCE) 410Q&As Download:<https://www.braindump2go.com/400-151.html>2.[2017 New 400-151 Study Guide Video: YouTube Video: [YouTube.com/watch?v=biFoBgnRT-I](https://www.youtube.com/watch?v=biFoBgnRT-I)