

## [Braindump2go 70-662 Training Guide Free Download (331-340)]

**MICROSOFT NEWS: 70-662 Exam Questions has been Updated Today! Get Latest 70-662 VCE and 70-662 PDF Instantly! Welcome to Download the Newest Braindump2go 70-662 VCE&70-662 PDF Dumps:**

<http://www.braindump2go.com/70-662.html> (507 Q&As) We never believe in second chances and Braindump2go brings you the best 70-662 Exam Preparation Materials which will make you pass in the first attempt. We guarantee all questions and answers in our 70-662 Dumps are the latest released, we check all exam dumps questions from time to time according to Microsoft Official Center, in order to guarantee you can read the latest questions! Exam Code: 70-662 Exam Name TS: Microsoft Exchange Server 2010, Configuring Certification Provider: Microsoft Corresponding Certifications: MCITP, MCITP: Enterprise Messaging Administrator on Exchange 2010, MCTS, MCTS: Microsoft Exchange Server 2010, Configuring 70-662 Dumps, 70-662 PDF, 70-662 PDF eBook, 70-662 Braindump, 70-662 Study Guide, 70-662 Book, 70-662 Practice Test, 70-662 Dumps PDF, 70-662 VCE, 70-662 VCE Dumps, 70-662 Valid Dumps, 70-662 Exam Questions Free, 70-662 Dumps, 70-662 Free Dumps, 70-662 Questions and Answers Free, 70-662 Braindump PDF, 70-662 Braindump VCE, 70-662 Preparation

**TS: Microsoft Exchange Server 2010, Configuring: 70-662**



**Product Description Exam Number/Code: 70-662**

**Exam Number/Code: 70-662**

"TS: Microsoft Exchange Server 2010, Configuring", also known as 70-662 Certification. With the complete collection of questions and answers, Braindump2go assembled to take you through 507 Q&As to your 70-662 Exam preparation resources, you will cover every field and category in Microsoft MCITP h your successful Microsoft Certification.

**Free Demo Download**

Braindump2go offers free demo for 70-662 exam (TS: Microsoft Exchange Server 2010, Configuring). You can check out the interface, question quality and usage of exams before you decide to buy it.

☒ **Printable PDF** ☒ **Premium VCE + VCE Simulator**

Questions and Answers : 507  
Q&As

Updated: Jan 02, 2016

~~\$429.99~~ **\$99.99**

[PDF DEMO](#)

[CHECK OUT](#)

**QUESTION 331** The network contains an Active Directory domain. The domain contains one site. You have an Exchange Server 2010 Service Pack 1 (SP1) organization that contains two Client Access servers, two Hub Transport servers, and users report that they fail to receive email messages from the Internet. You review the message tracking logs and discover that the organization failed to receive any email messages from the Internet during the past hour. You need to identify what is preventing the hub Transport servers from receiving email messages. What should run from the Exchange Management Shell? A.

Test-WebServicesConnectivityB. Test-MailFlowC. Get-MailboxDatabaseD. Test-MapiConnectivityE.

Test-ReplicationHealthF. Test-AvailabilityServiceG. Get-SenderIdConfigH. Test-SMTPConnectivityI.

Checkdatabaseseredundancy.ps1J. Retry-QueueK. Test-SenderIDL. Get-MailboxDatabaseCopyStatusM. Test-SystemHealth

N. Test-OutlookWebServices Answer: H Explanation: <http://technet.microsoft.com/en-us/library/ff849710.aspx> **QUESTION 332**

Your network contains an Active Directory domain named fabrikam.com. You have an Exchange Server 2010 Service Pack 1 (SP1) organization that contains four servers. The servers are configured as shown in the following table. Edge1 is located in the perimeter network. You need to replicate the transport configurations to Edge1. What should you do first?

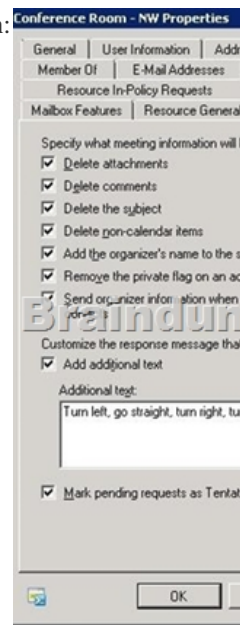
Server name	Server role
Mail1	Mailbox
Cas1	Client Access
Edge1	Edge Transport

A. From Hub1, run the Get-EdgeSubscription cmdlet and specify the FileName parameter.B. From Edge1, run the Get-EdgeSubscription cmdlet and specify the FileData parameter.C. From Hub1, run the New-EdgeSubscription cmdlet and specify the FileData parameter.D. From Edge1, run the New-EdgeSubscription cmdlet and specify the FileName parameter.

Answer: D Explanation: <http://technet.microsoft.com/en-us/library/bb123800.aspx> **QUESTION 333** You have an Exchange Server 2010 Service Pack 1 (SP1) organization. You have a resource mailbox for a meeting room named Meeting Room 1. You need to ensure that when a user schedules a meeting for Meeting Room 1, the user receives an email message that contains directions to the meeting room. Which property tab should you modify? To answer, select the appropriate tab in the answer area.



A. Mailbox Features B. Resource General C. Resource Policy D. Resources Information Answer: D Explanation:



QUESTION 334 You have an Exchange Server 2003 organization that contains a server named EX\_Server. You install a server named Server1 that runs Exchange Server 2010 Service Pack 1 (SP1). You create a public folder database on Server1. A user named User1 has a mailbox on Server1. User1 creates a public folder on Server1 and posts content to the public folder. From Outlook Web App, User1 attempts to access the public folders on EX\_Server and receives an error message. You need to ensure that User1 can access all of the public folders in the organization from Outlook Web App. What should you do? (Each correct answer presents a complete solution. Choose all that apply.) A. From Exchange System Manager on EX\_Server, modify the replica list of the public folders. B. From the Exchange Management Console (EMC), modify the properties of the Outlook Web App mailbox policy. C. Instruct User1 to use Outlook Web Access (OWA). D. From the Exchange Management Shell, run the `addreplicatopfrecurse.ps1` script. E. From the Exchange Management Console (EMC), modify the default public folder database of the mailbox database.

Answer: A Explanation: This question is actually about replication. Once the public folders on EX\_Server are replicated to Server1, User1 will be able to access them. Reference: <http://technet.microsoft.com/en-us/library/dd335168.aspx>

<http://blogs.technet.com/b/agobbi/archive/2010/08/04/how-to-move-public-folder-from-exchange-2003-to-exchange-2010.aspx>

QUESTION 335 Your network contains an Exchange Server 2010 SP1 organization named contoso.com. The organization contains a Client Access server named Server1 and a domain controller named DC1. All client computers run Windows 7 Professional. All users access their calendar and download their email messages by using Windows Mail. You need to modify the TCP port on the Exchange server used by the Windows Mail clients. What should you do? A. run the `Set-PopSettings` cmdlet B. run the `Set-OfflineAddressBook` cmdlet C. modify the properties of the Exchange ActiveSync virtual directory D. Modify the `Redirect.aspx` file E. modify the properties of the Client Access server object F. run the `New-OwaMailboxPolicy` cmdlet G. modify the properties of the offline address book (OAB) virtual directory H. run the `New-ActiveSyncMailboxPolicy` cmdlet I. modify the `Casredirect.aspx` file J. modify the properties of the OWA virtual directory K. run the `Set-ImapSettings` cmdlet L. run the `Export-ExchangeCertificate` cmdlet Answer: A Explanation: <http://technet.microsoft.com/en-us/library/aa996347.aspx>

<http://technet.microsoft.com/en-us/library/bb676455.aspx> <http://technet.microsoft.com/en-us/library/bb123530.aspx> QUESTION 336

Drag and Drop Question Your network contains an Active Directory domain named contoso.com. The domain contains an Exchange Server 2010 Service Pack 1 organization. The domain contains an organizational unit (OU) named Sales. You need to configure

Outlook Web App to meet the following requirements:- Allow only members of the Sales OU to change their password by using the Exchange Control Panel (ECP).- Prevent all other users from changing their password by using the ECP. What should you do? To answer, move the appropriate actions from the list of actions to the answer area and arrange them in the correct order.

Answer:

Create a new Outlook Web App mailbox policy named Accounting.

Modify the Authentication settings of the ECP virtual directory.

From the Exchange Management Shell, run get-mailbox | where-object {\$\_.distinguishedname -like '\*ou=accounting,dc=contoso,dc=com'} | set-casmailbox -ewasmalboxpolicy:accounting

Run the Configure External Client Access Domain wizard.

Modify the Segmentation settings of the default Outlook Web App mailbox policy.

Modify the Authentication settings of the OWA virtual directory.

Create a new Outlook Web App mailbox policy named Accounting.

From the Exchange Management Shell, run get-mailbox | where-object {\$\_.distinguishedname -like '\*ou=accounting,dc=contoso,dc=com'} | set-casmailbox -ewasmalboxpolicy:accounting


Modify the Segmentation settings of the default Outlook Web App mailbox policy.

Explanation:1. Create a New Outlook Web App mailbox policy named Accounting.2. From the Exchange Management Shell, run Get-mailbox | where-object {\$\_.distinguishedname -like '\*ou=accounting,dc=contoso,dc=com'} | Set-CasMailbox-OWAMailboxPolicy:Accounting.3. Modify the Segmentation settings of the default Outlook Web App mailbox policy.Reference:<http://technet.microsoft.com/en-us/library/dd335142.aspx><http://technet.microsoft.com/en-us/library/dd335191.aspx> QUESTION 337Your network contains an Active Directory forest named fabrikam.com. All servers run Windows Server 2008 R2 Service Pack 1 (SP1). You have two servers named Mail1 and Edge1. Mail1 is located on the internal network. Edge1 is located on the perimeter network. The network and the perimeter network are separated by a firewall. You plan to deploy Exchange Server 2010 SP1 to Mail1 and Edge1. Mail1 will have the Mailbox, Hub Transport, and Client Access server re installed. Edge1 will have the Edge Transport server role installed. You need to ensure that you can install the Edge Transport server role on Edge1. The solution must minimize the amount of software inst Edge1. What should you install on Edge1? (Choose all that apply.) A. The Web Server (IIS) server roleB. the SMTP Server featureC. Microsoft .NET Framework 3.5 SP1D. Remote Server Administration Tools (RSAT)E. Active Directory Lightweight Directory Services (AD LDS) Answer: CDEExplanation: <http://technet.microsoft.com/en-us/library/bb691354.aspx> QUESTION 338You have a hosted Exchange organization. All servers in the organization have Exchange Server 2010 Service Pack 1 (SP1) installed. You have a 3 mailbox servers in DAG, which command do you use to enable Datacenter Activation Coordination on exiting DAG. Which cmdlet should you use? A. Set-DatabaseAvailabilityGroupB. Get-DatabaseAvailabilityGroupC. New-DatabaseAvailabilityGroupD. Add-MailboxDatabaseCopy Answer: AExplanation:Ans: Set-DatabaseAvailabilityGroup-Identity DAG2-DatacenterActivationMode DagOnly QUESTION 339You have a hosted Exchange organization. All servers in the organization have Exchange Server 2010 Service Pack 1 (SP1) installed. Select the proper DNS record to create when you deploy federating delegation (choose all that apply) A. A recordB. MX (mail exchange record)C. MG (mail group record)D. TXT record Answer: ADEExplanation:Create a TXT record for federated delegation. The A record should actually be a CNAME, according to Technet. However, in the strictest sense, an A record would need to have been created in DNS to map the IP to the external server name, then the CNAME record would be created so the federated partner can access your network. For example:A record maps server IP to company name (i.e., 64.4.6.100 to contoso.com). CNAME sets next record for discovery (i.e., autodiscover.contoso.com). It is unlikely that your exam will give you the option of an A record, but if there is no mention of a CNAME go with A and TXT. Otherwise, always go with CNAME and TXT. Reference: <http://technet.microsoft.com/en-us/library/ff601760.aspx> QUESTION 340You have Exchange 2010 SP1 and outlook clients in configuration:Server1 holds public folder database. You deploy server4 and outlook2010 clients. Which command do you use to configure that the new public folders are created only on server4?

Server name	Server role
Server1	Mailbox
Server2	Hub Transport
Server2	Client Access

A. Set-MailboxDatabaseB. Remove-StoreMailboxC. Get-MailboxDatabaseD. New-MailboxDatabase Answer: A  
Explanation:<http://technet.microsoft.com/en-us/library/bb629522.aspx>Set-MailboxDatabase-Identity "Mailbox Database"-PublicFolderDatabase "PublicFolderDB1" Braindump2go Guarantee:Pass-Certification 70-662 offers absolute risk free investment opportunity, values your timr and money! Braindump2go latest 70-662 Real Exam Dumps - Your success in 70-662 Exam is certain! Your belief in our 70-662 Exam Dumps is further strengthened with 100% Money Back Promise from Braindump2go!

### TS: Microsoft Exchange Server 2010, Configuring: 70-662



**Product Description Exam Number/Code: 70-662**

**Exam Number/Code: 70-662**

"TS: Microsoft Exchange Server 2010, Configuring", also known as 70-662 exam, is a Microsoft Certification. With the complete collection of questions and answers, Braindump2go has assembled to take you through 507 Q&As to your 70-662 Exam preparation. In the 70-662 exam resources, you will cover every field and category in Microsoft MCITP helping to ready you for your successful Microsoft Certification.

**Questions and Answers : 507 Q&As**

Updated: Jan 02, 2016

~~\$120.99~~ **\$99.99**

[PDF DEMO](#)

[CHECK OUT](#)

☒ **Printable PDF** ☒ **Premium VCE + VCE Simulator**

FREE DOWNLOAD: NEW UPDATED 70-662 PDF Dumps &70-662 VCE Dumps from Braindump2go:  
<http://www.braindump2go.com/70-662.html> 507 Q&As)