

## Download Free Braindump2go Microsoft 70-689 Exam VCE File Guarantee 100% Pass Microsoft 70-689 (91-100)

Braindump2go Guarantees Your Microsoft 70-689 Exam 100% Success with Our Unique Official 70-689 Exam Questions Resources! Braindump2go's 70-689 Braindumps are Developed by Experiences IT Certifications Professionals Working in Today's Prospering Companies and Data Centers! Braindump2go 70-689 Exam Dumps are Checked by Our Experts Team every day to ensure you have the Latest Updated Exam Dumps! Vendor: MicrosoftExam Code: 70-689Exam Name: Microsoft Upgrading Your Skills to MCSA Windows 8.

Compared Before Buying Microsoft 70-689 PDF & VCE!		
Pass4sure	Braindump2go	TestKing
	100% Pass OR Money Back	
Not In Stock	299 Q&As	Not In Stock
/	\$99.99	/
/	Coupon Code: BDNT2014	/

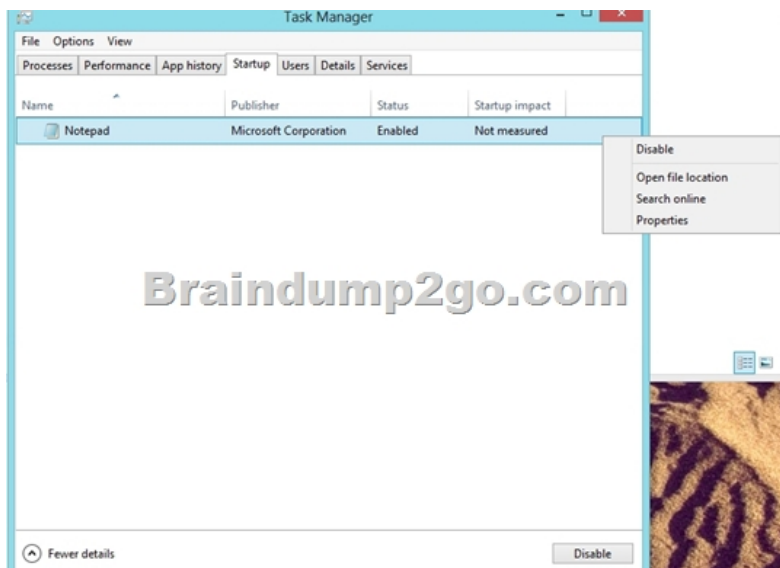
QUESTION 91A company has client computers that run Windows 8. The company uses Windows BitLocker Drive Encryption with the data-only option on all client computers. You delete a file containing highly confidential information from your computer. You need to clear the free space on the hard drive to minimize the chance of the confidential information being recovered. Which command should you run on the client computer? A. manage-bde -wB. chkdsk /spotfixC. diskpart cleanD. BdeHdCfgr -target c: shrink Answer: AExplanation: <http://technet.microsoft.com/en-us/library/jj647761.aspx> Manage-bde -WipeFreeSpace|-w

[<Drive>] [-Cancel] [-computername <Name>] [{-?/?}] [{-help|-h}] manage-bde -w C: Wipes the free space on the volume removing any data fragments that may have existed in the space. QUESTION 92A company has an Active Directory Domain Services (AD DS) domain. All client computers run Windows 8. Client computers use Window BitLocker Drive Encryption with a Trusted Platform Module (TPM) chip. You need to create a Group Policy object (GPO) that will secure the TPM owner information. Which policy setting should you configure? A. Enable the Turn on TPM backup to Active Directory Domain Services policy setting.B. Enable the Configure the level of TPM usage authorization information available to the registry policy setting.C. Set the Configure the level of TPM owner authorization information available to operating system policy setting to Full.D. Enable the Configure TPM platform validation profile policy setting. Answer: AExplanation:

<http://technet.microsoft.com/en-us/library/jj679889.aspx> QUESTION 93You deploy several tablet PCs that run Windows 8. You need to minimize power usage when the user presses the sleep button. What should you do? A. In Power Options, configure the sleep button setting to Hibernate.B. Disable the C-State control in the computer's BIOS.C. Configure the active power plan to set the system cooling policy to passive.D. In Power Options, configure the sleep button setting to Sleep. Answer: AExplanation: Sleep is a power-saving state that allows a computer to quickly resume full-power operation (typically within several seconds) when you want to start working again. Putting your computer into the sleep state is like pausing a DVD player--the computer immediately stops what it's doing and is ready to start again when you want to resume working. Hibernation is a power-saving state designed primarily for laptops. While sleep puts your work and settings in memory and draws a small amount of power, hibernation puts your open documents and programs on your hard disk, and then turns off your computer. Of all the power-saving states in Windows, hibernation uses the least amount of power. On a laptop, use hibernation when you know that you won't use your laptop for an extended period and won't have an opportunity to charge the battery during that time. Hybrid sleep is designed primarily for desktop computers. Hybrid sleep is a combination of sleep and hibernate--it puts any open documents and programs in memory and on your hard disk, and then puts your computer into a low-power state so that you can quickly resume your work. That way, if a power failure occurs, Windows can restore your work from your hard disk. When hybrid sleep is turned on, putting your computer into sleep automatically you're your computer into hybrid sleep. Hybrid sleep is typically turned on by default on desktop computers.

<http://www.eightforums.com/tutorials/14956-power-button-action-change-windows-8-a.html> QUESTION 94A company has client computers that run Windows 8. You install a new device on a client computer. The device installation includes an application that runs when the computer starts. You experience problems with the application. You need to prevent the application from running when the computer starts, without affecting any other application. What should you do? A. Configure the application by using Task Manager.B. Run the bcdedit -p command.C. Configure the device by using Device ManagerD. Run the msconfig -p command. Answer: AExplanation: it's a new feature of Windows 8

<http://pcworld.co.nz/pcworld/pcw.nsf/feature/20-essential-windows-8-tips-and-tricks>



**QUESTION 95** You manage computers that run Windows 8. You plan to install a desktop app named App1 on one of the client computers. You need to install the app without any user interaction and without displaying a progress bar. Which command should you run? A. `msiexec /i appl.msi /qb` B. `msiexec /x appl.msi /qb` C. `msiexec /i appl.msi /qn` D. `msiexec /x appl.msi /qn` Answer: C Explanation: /i Installs or configures a product. /x Uninstall a product. /qn Displays no user interface. /qb Displays a basic user interface. [http://technet.microsoft.com/en-us/library/cc759262\(v=ws.10\).aspx](http://technet.microsoft.com/en-us/library/cc759262(v=ws.10).aspx)

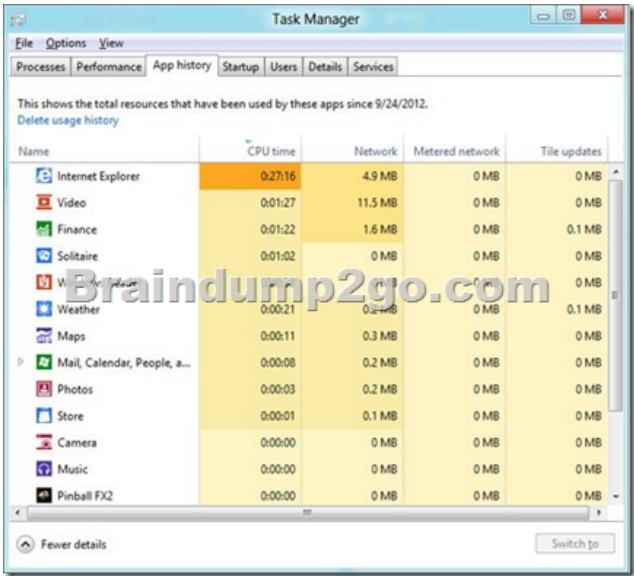
**QUESTION 96** You administer Windows 8 Pro laptops in your company network. Your network has a Remote Access Server (RAS) in a perimeter network that runs Windows Server 2012. All laptop users have a PPTP VPN configured on their computer. Users report that their VPN disconnects when they switch between WLAN and WWAN networks. You need to ensure that if a VPN is disconnected, the laptop will automatically attempt to reconnect. What should you do? A. Create a new VPN connection, and then open Local Computer Policy and define Files not cached policy. B. Run the `netsh.exe` command and include the `wlan` parameter. C. Create a new VPN connection, and disable offline files. D. Create a new Remote Desktop connection, and then set the Local Computer policy to Disable drives redirection for Remote Desktop Services. Answer: C

**QUESTION 97** You administer client computers in your company network. The network includes an Active Directory Domain Services (AD DS) domain. Employees in the human resources (HR) department are getting new Windows 8 Enterprise computers. The HR department uses a line of business (LOB) Windows Store app named Timesheet that is not available in Windows Store. You need to ensure that all employees in the HR department can use Timesheet on their new computers. What should you do? A. Install and run the Windows App Certification Kit. B. Activate the sideloading product key on each computer. C. Use a local account to log on to each computer. D. Set the turn off the store application group policy to Enabled Answer: B

**QUESTION 98** You administer Windows 8 client computers in your company network. You deploy an application that requires a specific Windows update to be installed on the computers. You need to verify that the update is installed on specific computers. What are two possible ways to achieve this goal? (Each correct answer presents a complete solution. Choose two) A. Run The system update readiness tool. B. Open View updates history. C. Open the Check for updates applet. D. Run the DISM command with the `/image` and `/get-packageinfo` switches. E. Run the DISM command with the `/online` and `/get-packageinfo` switches Answer: BE

**QUESTION 99** You are configuring two client computers that run Windows 8: A desktop computer named COMPUTER1 and a portable computer named COMPUTER2. You have the following requirements: - Store all personal data in a folder named Data on COMPUTER1. - Ensure that you can access all personal data from COMPUTER2, even when a network connection is unavailable. - Synchronize personal data between the computers twice a day. You need to configure the computers to meet the requirements. Which two actions should you perform? (Each correct answer presents part of the solution. Choose two) A. In Sync Center, configure a schedule for offline files. B. From COMPUTER1, connect to COMPUTER2 and configure the Data folder to always be available offline. C. From COMPUTER2, map a network drive to the Data folder on COMPUTER1. D. In Sync Center, set up a new sync partnership. E. From COMPUTER2, connect to COMPUTER1 and configure the Data folder to always be available offline Answer: AD Explanation: A: A sync partnership is a set of rules that tells Sync Center how and when to sync files or other information between two or more locations. A sync partnership typically controls how files sync between your computer and mobile devices, network servers, or compatible programs. D: To make files and folders available offline To be able to work with a file

offline, you first need to make it available offline. Locate the network file or folder that you want to make available offline. Right-click the file or folder, and then click Always Available Offline. The Always Available Offline command. The next time you try to access this file or folder, you will be able to open it even if the network version is unavailable. Reference: Working with network files when you are offline QUESTION 100 You use many Windows Store apps on a computer that runs Windows 8. You are planning a performance audit on the computer. You need to establish the volume of data upload from each app over a five-day period. Which three actions should you perform? (Each correct answer presents part of the solution. Choose three.) A. On the fifth day, review the upload statistics in Task Manager. B. Configure Task Manager to save usage data to a file. C. Configure Task Manager to record data upload from each Windows Store app. D. On the first day, delete any existing application usage history. E. Open Task Manager and add the Uploads column. Answer: ABDE Explanation: B, D: App History tab is a great new addition to Windows Task Manager. It maintains a list of application you launch during a session, so that you can easily switch to any previously used application, and view its CPU and Network usage. The Delete usage history will clear the usage statistics, letting you record application usage history from scratch. Example:



Incorrect: C: Use the Network column (not the Uploads column). All Braindump2go 70-689 Exam Dumps are Promised One Year Free Updation -- We will inform you when your products have new questions and Answers updation! Download Microsoft 70-689 Practice Tests Questions Full Version Now - Pass 70-689 100% One Time!

**Compared Before Buying Microsoft 70-689 PDF & VCE**

Pass4sure	Braindump2go	TestK
	100% Pass OR Money Back	
Not In Stock	299 Q&As	Not In Stock
/	\$99.99	/
/	Coupon Code: BDNT2014	/

<http://www.braindump2go.com/70-689.html>