


Free Braindump2go 70-662 eBook Download 100% Pass Exam 70-662 (201-210)

MICROSOFT NEWS: 70-662 Exam Questions has been Updated Today! Get Latest 70-662 VCE and 70-662 PDF Instantly! Welcome to Download the Newest Braindump2go 70-662 VCE&70-662 PDF Dumps:

<http://www.braindump2go.com/70-662.html> (507 Q&As) Laest 70-662 PDF Dumps and 70-662 VCE Dumps can be downloaded from Braindump2go Now! This New Updated 70-662 Exam Dumps has 507q in all! All Braindump2go 70-662 Exam Questions and Answers are formulated and verified by experienced IT professionals! We guarantee all of you can pass 70-662 Exam successfully! Exam Code: 70-662 Exam Name TS: Microsoft Exchange Server 2010, Configuring Certification Provider: Microsoft Corresponding Certifications: MCITP, MCITP: Enterprise Messaging Administrator on Exchange 2010, MCTS, MCTS: Microsoft Exchange Server 2010, Configuring 70-662 Dumps, 70-662 PDF, 70-662 PDF eBook, 70-662 Braindump, 70-662 Study Guide, 70-662 Book, 70-662 Practice Test, 70-662 Dumps PDF, 70-662 VCE, 70-662 VCE Dumps, 70-662 Valid Dumps, 70-662 Exam Questions Free, 70-662 Dumps, 70-662 Free Dumps, 70-662 Questions and Answers Free, 70-662 Braindump PDF, 70-662 Braindump VCE, 70-662 Preparation

TS: Microsoft Exchange Server 2010, Configuring: 70-662



Product Description Exam Number/Code: 70-662

Exam Number/Code: 70-662

"TS: Microsoft Exchange Server 2010, Configuring", also known as 70-662 exam, is a Microsoft Certification. With the complete collection of questions and answers, Braindump2go has assembled to take you through 507 Q&As to your 70-662 Exam preparation. In the 70-662 exam resources, you will cover every field and category in Microsoft MCITP helping to ready you for your successful Microsoft Certification.

Free Demo Download

Braindump2go offers free demo for 70-662 exam (TS: Microsoft Exchange Server 2010, Configuring). You can check out the interface, question quality and usability of our practice exams before you decide to buy it.

☒ **Printable PDF** ☒ **Premium VCE + VCE Simulator**

Questions and Answers : 507 Q&As

Updated: Jan 02, 2016

~~\$429.99~~ **\$99.99**

[PDF DEMO](#)

[CHECK OUT](#)

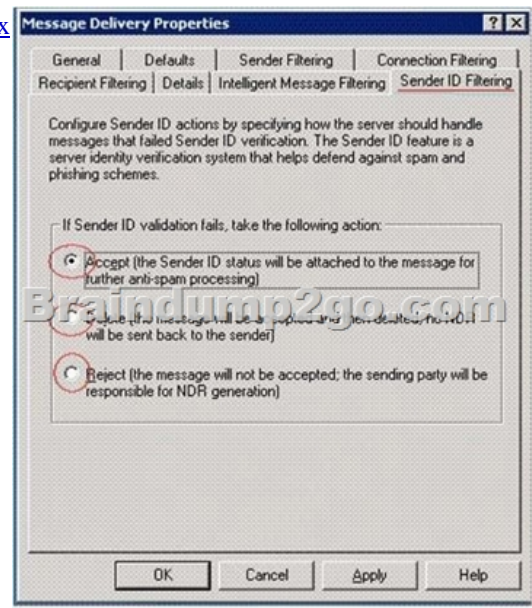
QUESTION 201 You have an Exchange organization. All servers in the organization have Exchange Server 2010 Service Pack 1 (SP1) installed. You create a retention policy and apply the policy to all mailboxes in the organization. You need to prevent the retention policy from being applied to a user named User1. What should you do? A. Run the set-mailbox-identity user1-singleitemrecoveryenabled \$true command. B. Modify the management role groups. C. Create a Retention Policy Tag that uses the All other folders tag type. D. Create a Retention Policy Tag that uses the Personal Folders tag type. E. Run the set-retentionpolicytag -identity never delete-type all command. F. Run the set-retentionpolicytag-identity never delete-type Personal command. G. Run the get-retentionpolicytag | set-retentionpolicytag-retentionenabled \$false command. H. Run the set-mailbox-identity 'user1'-retentionholdenabled \$true command. I. Modify the User Role Assignment Policy. Answer: H Explanation: <http://technet.microsoft.com/en-us/library/bb123981.aspx> <http://technet.microsoft.com/en-us/library/dd335168.aspx>

QUESTION 202 You have a hosted Exchange organization. All servers in the organization have Exchange Server 2010 Service Pack 1 (SP1) installed. All users use Microsoft Outlook 2010. A user named User1 reaches her mailbox size limit. You need to ensure that User1 can archive e-mail messages located in her mailbox and read the archived messages when she works offline. What should you create for User1? A. a managed folder mailbox policy B. a personal folder (PST) file C. a Personal Archive D. an offline store (OST) file Answer: B Explanation: Clue is in the Question: she needs to be able to read them offline, but for them to not remain in her Inbox.

QUESTION 203 You have an Exchange organization. All servers in the organization have Exchange Server 2010 Service Pack 1 (SP1) installed. The network contains an internal root certification authority (CA). Users on the network use Outlook Anywhere. A Client Access server uses a wildcard certificate issued by a trusted third-party root CA. You need to ensure that users can send and receive encrypted e-mail messages by using S/MIME. What should you do? A. Instruct all users to import the internal root CA certificate. B. Import the internal root CA certificate to the Client Access server. C. Instruct all users to import the third-party root CA certificate. D. Issue a certificate to each user from the internal root CA. Answer: D

QUESTION 204 You have an Exchange organization. All servers in the organization have Exchange Server 2010 Service Pack 1 (SP1) installed. You need to prevent external organizations that do not have sender policy framework (SPF) records from sending e-mail messages to the organization. What should you configure? A. an IP block list provider B. sender reputation C. sender filtering D. sender ID

filtering Answer: DExplanation: <http://technet.microsoft.com/en-us/library/aa996295.aspx>

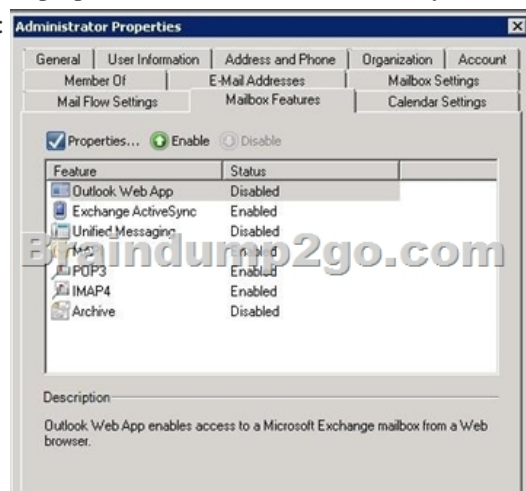


QUESTION 205 You have an Exchange organization. All servers in the organization have Exchange Server 2010 Service Pack 1 (SP1) installed. An external user reports that when he sends e-mail messages to the organization, they are not received. You suspect that the e-mail messages he sends are incorrectly identified as spam. You need to identify which anti-spam filter is blocking the e-mail messages. What should you do? A. Modify the message tracking settings, and then review the message tracking logs. B. Modify the protocol logging level, and then review the protocol logs. C. Modify the connectivity log settings, and then review the connectivity logs. D. Enable pipeline tracing, and then review the trace. Answer: D Explanation:

<http://technet.microsoft.com/en-us/library/bb125018.aspx>

<http://blogs.technet.com/b/provtest/archive/2010/07/27/exchange-server-2010-sp1-beta-hostingdeploymentpart-7-transport-segregation.aspx?PageIndex=2>

QUESTION 206 You have a hosted Exchange organization. All servers in the organization have Exchange Server 2010 Service Pack 1 (SP1) installed. You need to prevent a user named User1 from using Outlook Web App (OWA) to access his mailbox. What should you do? A. Create a new OWA mailbox policy. B. From the properties of Users1's Mailbox, modify the mailbox settings. C. From the properties of User1's mailbox, modify the mailbox features. D. Modify the default OWA mailbox policy. Answer: C Explanation:



QUESTION 207 You have an Exchange organization. All servers in the organization have Exchange Server 2010 Service Pack 1 (SP1) installed. All users have Windows Mobile 6.5 devices that connect to the organization by using Exchange ActiveSync. A user named User1 reports that she lost her device and successfully performed a remote wipe of the device. User1 later reports that she located her device. User1 configures the device to connect to Exchange ActiveSync and discovers that the connection fails. You need to ensure that User1 can connect her device by using Exchange ActiveSync. What should you do? A. Instruct User1 to use the Exchange Control Panel (ECP) to modify the device list. B. Instruct User1 to change her user account password. C. Instruct

User1 to perform a hardware reset on the device.D. Run the Set-ActiveSyncDeviceAccessRule cmdlet from the Exchange Management Shell. Answer: AExplanation:



QUESTION 208 You have an Exchange organization. All servers in the organization have Exchange Server 2010 Service Pack 1 (SP1) installed. The network contains two Active Directory sites named Site1 and Site2. Each site contains two Client Access servers. All mailbox databases in the organization are replicated to Mailbox servers in both sites. All users connect to their mailbox by using Microsoft Office Outlook 2003. You create a Client Access server array named array1.contoso.com in Site1, and then configure all users to connect to array1.contoso.com. You verify that all users can connect successfully to array1.contoso.com. One month later, all of the servers in Site1 fail. You need to ensure that all users can connect to a Client Access server in Site2 by using array1.contoso.com. What should you do? A. Modify the host (A) record for autodiscover.contoso.com to point to the IP address of a Client Access server in Site2. B. Create a Client Access server array named array2.contoso.com in Site2. Rename array2.contoso.com as array1.contoso.com. C. Create a Client Access server array named array2.contoso.com in Site1. Remove all of the Client Access servers from array1.contoso.com. D. Modify the host (A) record for array1.contoso.com to point to the IP address of a Client Access server in Site2. Answer: D

QUESTION 209 You have an Exchange organization. All servers in the organization have Exchange Server 2010 Service Pack 1 (SP1) installed. The organization is authoritative for a domain named nwtraders.com. You create a federated trust. You need to ensure that the federated partner servers can locate the Client Access servers in the organization. Which record should you create in the external DNS zone? A. an A record for autodiscover.nwtraders.com B. a CNAME record for nwtraders.com C. a TXT record for nwtraders.com D. an SRV record for _federation._TCP.nwtraders.com Answer: B Explanation: See Step 4 Create an Autodiscover DNS record in <http://technet.microsoft.com/enus/library/ff601760.aspx> You need to add an alias canonical name (CNAME) resource record to your public-facing DNS. The new CNAME record should point to an Internet-facing Client Access server that's running the Autodiscover service. In the previous Contoso example, the new CNAME record would specify autodiscover.contoso.com as the host name. For organizations using Microsoft DNS, you can add a CNAME record by using either DNS Manager or the DNSCmd command. For detailed instructions, see Add an Alias (CNAME) Resource Record to a Zone. Reference:

<http://technet.microsoft.com/en-us/library/ff601760.aspx> (Step 4: Create an Autodiscover DNS record) QUESTION 210 You have an Exchange Server 2003 organization. You install an Exchange Server 2010 Service Pack 1 (SP1) Edge Transport server on the network. You need to ensure that the Edge Transport server can send and receive e-mail messages from the Internet for the organization. You configure the Exchange Server 2003 servers to send all e-mail for external recipients to the Edge Transport servers. What should you do on the Edge Transport servers? A. Create and configure a Send connector. Create and configure a Receive connector. Create and configure an Accepted domain. B. Create and configure a Send connector. Create and configure an Accepted domain. Install the Exchange Server 2010 schema extensions. C. Create an Edge Subscription file. Create and configure a Send connector. Create and configure a Receive connector. D. Create an Edge Subscription file. Create and configure a Send connector. Create and configure an Accepted domain. Answer: A Explanation:

<http://technet.microsoft.com/en-us/library/bb124011.aspx> Braindump2go New Released 70-662 Dump PDF Free Download, 507 Questions in all, Passing Your Exam 100% Easily!

TS: Microsoft Exchange Server 2010, Configuring: 70-662



Questions and Answers : 507
Q&As

Updated: Jan 02, 2016

~~\$129.99~~ **\$99.99**

[PDF DEMO](#)

[CHECK OUT](#)

Product Description Exam Number/Code: 70-662

Exam Number/Code: 70-662

"TS: Microsoft Exchange Server 2010, Configuring", also known as 70-662 exam, is a Microsoft Certification. With the complete collection of questions and answers, Braindump2go has assembled to take you through 507 Q&As to your 70-662 Exam preparation. In the 70-662 exam resources, you will cover every field and category in Microsoft MCITP helping to ready you for your successful Microsoft Certification.

Free Demo Download

Braindump2go offers free demo for 70-662 exam (TS: Microsoft Exchange Server 2010, Configuring). You can check out the interface, question quality and usability of our practice exams before you decide to buy it.

☒ **Printable PDF** ☒ **Premium VCE + VCE Simulator**

FREE DOWNLOAD: NEW UPDATED 70-662 PDF Dumps & 70-662 VCE Dumps from Braindump2go:
<http://www.braindump2go.com/70-662.html> 507 Q&As)