

## Free New Updated 70-689 Practice Tests Dumps Questions and Answers from Microsoft Exam Center Braindump2go Guarantere You 100% 70-689 Pass (71-80)

The Microsoft 70-689 Practice Exam is a very hard exam to successfully pass your exam. Here you will find Free Braindump2go Microsoft Practice Sample Exam Test Questions that will help you prepare in passing the 70-689 exam. Braindump2go Guarantees you 100% PASS exam 70-689 Vendor: Microsoft Exam Code: 70-689 Exam Name: Microsoft Upgrading Your Skills to MCSA Windows 8.1

Compared Before Buying Microsoft 70-689 PDF & VCE!		
Pass4sure	Braindump2go	TestKing
	100% Pass OR Money Back	
Not In Stock	299 Q&As	Not In Stock
/	\$99.99	/
/	Coupon Code: BDN2014	/

QUESTION 71 A company has client computers that run Windows 8. The client computers are in a workgroup. Windows Remote Management (WinRM) is configured on all computers. You need to configure a computer named COMPUTER1 to retrieve Windows event logs from all other computers in the workgroup. Which three actions should you perform? (Each correct answer presents part of the solution. Choose three.) A. Add machine accounts of all other computers to the Event Log Readers local group on COMPUTER1. B. Create and configure a collector-initiated subscription. C. Start the Windows Event Collector service on all computers other than COMPUTER1. D. Start the Windows Event Collector service on COMPUTER1. E. Create and configure a source computer-initiated subscription. F. Start the Windows Event Log service on all computers other than COMPUTER1. G. Add COMPUTER1 machine account to the Event Log Readers local group on all other computers. Answer: BDG Explanation: For best management we want a collector-initiated subscription--meaning we'll be setting up the subscription at the collecting computer instead of at each individual computer. The Windows Event Collector service is requested for subscriptions to work on the computer doing the collecting. The collecting computer must be a member of the Event Log Readers local group on all computer in order to be able to read the event log. QUESTION 72 A company has client computers that run Windows 8. File History is on. An employee downloads data to a folder on drive D named Archives. You need to ensure that the user can restore files from the Archives folder by using File History. What should you do? A. Configure the File History advanced settings to include the Archives folder. B. From the File History configuration options, change the drive and select the Archives folder. C. Create a library named History and add the Archives folder to the library. D. Move the Archives folder into the Windows system folder. Answer: CE Explanation:

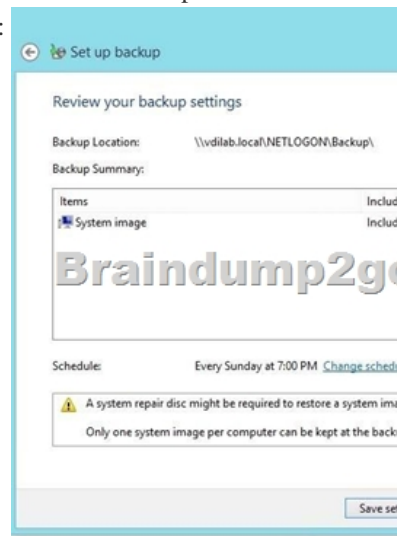
<http://blogs.msdn.com/b/b8/archive/2012/07/10/protecting-user-files-with-file-history.aspx> File History only backs up data in libraries, favorites, desktop, and contacts and must use a non-system drive for backup. QUESTION 73 You have a portable computer that runs Windows 8. You are creating a backup plan. You have the following requirements:- Automatically back up the files in your Documents folder every hour. - Ensure that you can recover different versions of the backed-up files. - Do not back up the Windows operating system files. You need to configure the computer to meet the requirements. Which two actions should you perform? (Each correct answer presents part of the solution. Choose two.) A. Create a volume mount point in your Documents folder. B. Connect an external hard drive to the computer. C. Schedule a task to create a restore point every hour. D. Create a recovery drive on drive C E. Turn on File History. Answer: BE Explanation: File History only backs up data in libraries, favorites, desktop, and contacts and must use a non-system drive for backup. <http://blogs.msdn.com/b/b8/archive/2012/07/10/protecting-user-files-with-file-history.aspx>

QUESTION 74 A company has client computers that run Windows 8. Finance department employees store files in the C: Finance directory. File History on. A Finance department employee attempts to restore a file to a previous version by using File History. The file is not available to restore. You need to establish why the file history is not available and ensure that it is available in the future. Which two actions should you perform? (Each correct answer presents part of the solution. Choose two.) A. Set the Protection Settings for drive C to On. B. Restore the data files from the Previous C. Versions tab located in the folder properties. D. Review the File History backup log. E. Move the file into a library. Answer: DE Explanation: File History only backs up data in libraries, favorites, desktop, and contacts and must use a non-system drive for backup. Since File History is already on we can assume the drive doesn't need to be changed. So we should review the log and move the file to a library. Volume shadow copy has been replaced with File History: [http://msdn.microsoft.com/en-us/library/windows/desktop/hh848072\(v=vs.85\)](http://msdn.microsoft.com/en-us/library/windows/desktop/hh848072(v=vs.85)) QUESTION 75 All client

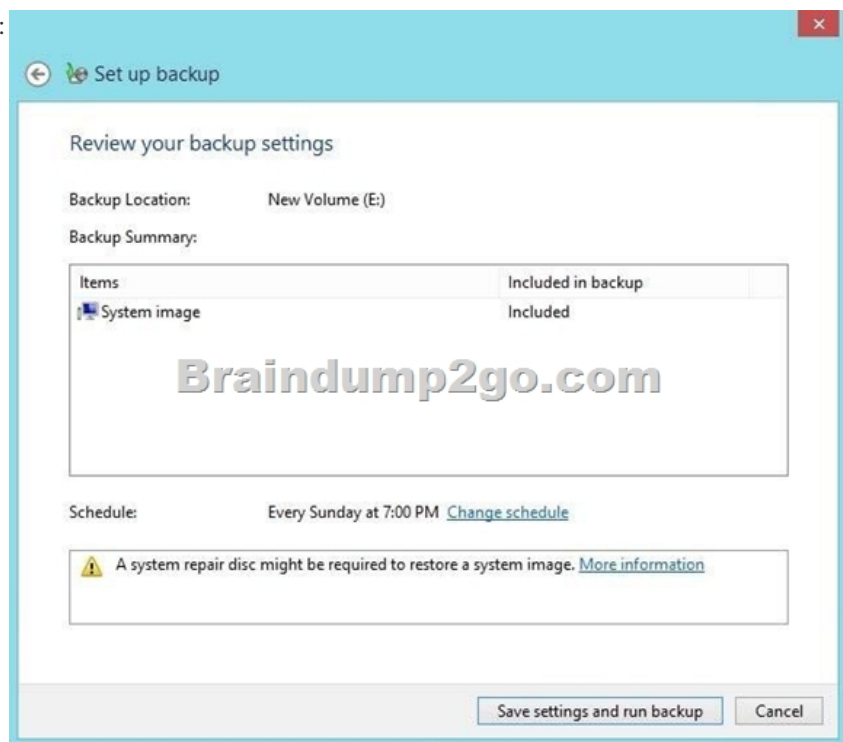
computers in a company's network environment run Windows 8. A client computer has two internal hard disk drives. The hard drives are configured as shown in the following table.

Drive	Size	Free space	Type	
				-----C

250 GB    20 GB    Dynamic    D    500 GB    450 GB    Dynamic    You are choosing a backup destination for drive C. You have the following requirements:- Ensure that the backup file is available if drive C fails. - Ensure that the backup file can be accessed by other computers on the network. - Support the backup of multiple system images. You need to select a backup destination that meets the requirements. Which destination should you select? A. shared network folder B. drive D C. multiple DVDs D. external hard drive Answer: D Explanation: Shared network folder will only support one system image:



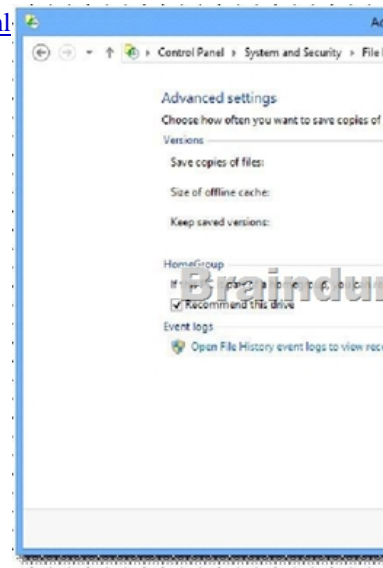
That applies to internal / external disks:



<http://windows.microsoft.com/en-us/windows7/Back-up-your-programs-system-settings-and-files> Keeping different versions of system images: If you're saving your system images on an internal or external drive, or on CDs or DVDs, you can keep several versions of system images. On internal and external hard drives, older system images will be deleted when the drive runs out of space. Conclusion is to use external HDD and share it over the network. QUESTION 76 You install Windows 8 on a desktop computer and install a third-party desktop app. The computer runs optimally until you install another third-party desktop app. You need to remove only the most recently installed third-party desktop app. You start the computer from a system repair disk. Which troubleshooting option should you use? A. System Image Recovery B. Remove everything and install Windows C. System Restore D. Refresh your PC without affecting your files Answer: C Explanation: <http://www.bleepingcomputer.com/tutorials/windows-8-system-restore-guide/> QUESTION 77 You are in the process of setting up File History on your workstation. You are configuring the Size of offline cache Advanced settings. Which of the following is the

default setting? A.2% B.5% C.10% D.20% Answer: BExplanation:

<http://news.softpedia.com/news/Windows-8-Secrets-Incremental-Backup-with-File-History-299238.shtml>



QUESTION 78A company has 100 client computers that run Windows Vista. The company uses several custom applications. The company plans to replace the Windows Vista computers with new computers that run Windows 8. You need to establish which of the currently installed applications will work on Windows 8. What should you do? A.Install and run the Windows App Certification Kit. B.Install and run the Microsoft Assessment and Planning Toolkit. C.Install and run the Microsoft Deployment Toolkit. D.Install and run the Windows Application Compatibility Toolkit. Answer: DExplanation:The Microsoft Application Compatibility Toolkit (ACT) helps you determine whether the applications, devices, and computers in your organization are compatible with versions of the Windows operating system. By using ACT, you can obtain compatibility information from Microsoft and software vendors, identify compatibility issues within your own organization, and share compatibility ratings with other ACT users. The tools in ACT help you analyze and mitigate compatibility issues before you deploy a version of Windows to your organization.

<http://technet.microsoft.com/library/hh825181.aspx><http://technet.microsoft.com/en-us/windows/application-compatibility.aspx>

QUESTION 79You are in the process of setting up File History on your workstation. You are configuring the Save copies of files Advanced settings.Which of the following is the default setting? A.15 minutes B.30 minutes C.1 hour D.6 hours Answer: C

QUESTION 80You are employed as an administrator at contoso.com. The network consists of a single Active Directory Domain Services (AD DS) domain, named contoso.com.All workstations on the contoso.com network have Windows 8 installed.You need to configure files history on a client system.You notice that the free storage space on the selected drive is low, but you do not have a spare drive to replace it. What should you do? A.Configure the save copies of files setting to back up files once a day. B.Configure Size of offline cache setting to 2% C.Keep saved versions setting to be 1 month D.Keep saved versions setting until space is needed Answer: D

100% Full Money Back Guarantee Promised By Braindump2go to All 70-689 Exam Candidates: Braindump2go is confident that our NEW UPDATED 70-689 Exam Questions and Answers are changed with Microsoft Official Exam Center, If you cannot PASS 70-689 Exam, nevermind, we will return your full money back! Visit Braindump2go exam dumps collection website now and download 70-689 Exam Dumps Instantly Today!

**Compared Before Buying Microsoft 70-689 PDF & VCE!**

Pass4sure	Braindump2go	TestKing
	100% Pass OR Money Back	
Not In Stock	299 Q&As	Not In Stock
/	\$99.99	/
/	Coupon Code: BDNT2014	/

<http://www.braindump2go.com/70-689.html>