

## Microsoft 70-247 Exam Dumps From Braindump2go Covers The Latest Knowledge Points From Microsoft Exam Centre (41-50)

2015 New Updated 70-247 Exam Dumps Questions and Answers are all from Microsoft Official Exam Center! Some new questions added into this new released 70-247 Dumps! Download 70-247 Exam Dumps Full Version Now and Pass one time!  
Vendor: Microsoft Exam Code: 70-247 Exam Name: Configuring and Deploying a Private Cloud with System Center 2012

Compared Before

Pass4sure

100 Q&As

\$125.99

/

QUESTION 41 Your network contains a System Center Service Manager 2010 Service Pack 1 (SP1) infrastructure that contains four servers. The servers are configured as shown in the following table. You upgrade Server1 and Server2 to Service Manager 2012. You need to ensure that Server2 can continue to deploy reports to Server3. Which two tasks should you perform? (Each correct answer presents part of the solution. Choose two.) A. Modify the RSReportServer.config file on Server2. B. Copy the Microsoft.EnterpriseManagement.Reporting.Code.dll file to Server4. C. Modify the RSSrvPolicy.config file on Server2. D. Modify the RSReportServer.config file on Server3. E. Modify the RSSrvPolicy.config file on Server3. F. Copy the Microsoft.EnterpriseManagement.Reporting.Code.dll file to Server3. Answer: D, F Explanation:

<http://technet.microsoft.com/en-us/library/hh519664> QUESTION 42 Your network contains an Active Directory domain named contoso.com. You plan to install System Center SQL1 1 GB of RAM x64 architecture Windows Server 2008 Service Pack 2 (SP2) Microsoft SQL Server 2008 Express 2012 Virtual Machine Manager (VMM) on server named Server1. During the installation, you receive the error message shown in the exhibit. (Click the Exhibit button.) You need to install VMM 2012 on Server1. What should you instruct a domain administrator to do first? A. Create a service location (SRV) record named \_tcp.server1.contoso.com and a canonical name (CNAME) record named DKM. B. Create a service connection point (SCP) object named DKM.contoso.com, and then modify the permissions of the SCP object. C. Create a container named DKM, and then modify the permissions of the container. D. Create a computer object named DKM, and then modify the permissions of the computer object. Answer: C Explanation: <http://www.aidanfinn.com/?p=11446>

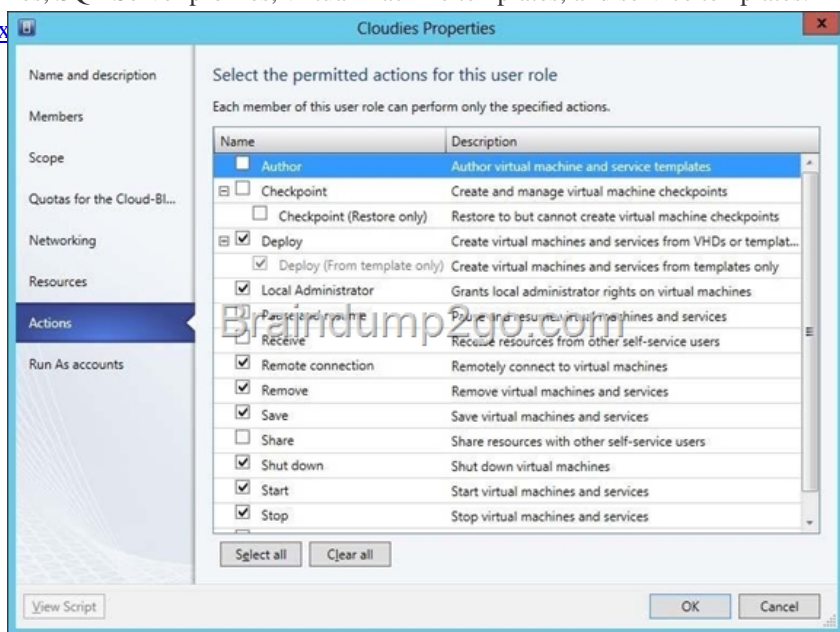
<http://blogs.technet.com/b/scvmm/archive/2012/06/18/kb-system-center-2012-virtual-machine-manager-setup-fails-to-create-child-objects-for-dkm.aspx> QUESTION 43 You have a System Center 2012 Virtual Machine Manager (VMM) infrastructure. You need to prepare the infrastructure to deploy Hyper-V hosts to bare-metal servers. What should you copy to the VMM library? A. an ISO that contains a generalized image of Windows Server 2008 R2 B. a discover image and a capture image C. a VHD that contains a generalized image of Windows Server 2008 R2 D. the Boot.wim file and the Install.wim file Answer: C Explanation:

<http://technet.microsoft.com/en-us/library/gg610658.aspx> QUESTION 44 You have a System Center 2012 Virtual Machine Manager (VMM) infrastructure that contains one virtualization host named Server1. You configure a logical network named Network1 that contains a network named Site1. DHCP allocates IP addresses on the network. You configure the logical network as shown in the exhibit. (Click the Exhibit button.) You need to ensure that the virtual machine on VLAN 1 are assigned IP addresses from DHCP only. What should you do? A. From the logical network configuration, remove the network site. B. From the Network Site properties, remove the subnet assignment. C. From the Network Site properties, remove the VLAN assignment. D. From Windows Firewall on Server1, create an inbound rule. Answer: B Explanation:

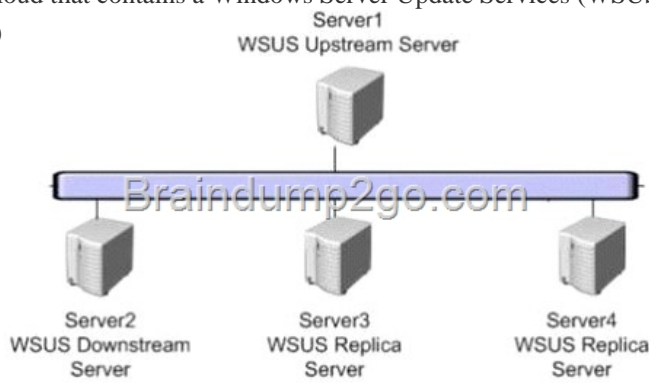
<http://technet.microsoft.com/en-us/library/gg610596.aspx> If you want to use DHCP that is already available on the network to assign IP addresses to virtual devices in a specified VLAN, create network sites with only VLANs assigned. QUESTION 45 Your company has a private cloud managed by a System Center 2012 Virtual Machine Manager (VMM) infrastructure. You add a new SAN to the network, and then you run a storage discovery. You discover that the SAN resources are not discovered by VMM. You verify that the VMM server can communicate with the SAN. You need to ensure that VMM can discover the new SAN. What should you install? A. a third-party iSCSI initiator B. a Storage Management Initiative - Specification (SMI-S) provider. C. the Multipath I/O (MPIO) feature D. the Windows System Resource Manager (WSRM) feature. Answer: B Explanation:

<http://technet.microsoft.com/en-us/library/gg610600.aspx> <http://technet.microsoft.com/en-us/library/gg610563.aspx> QUESTION 46 You have a System Center 2012 Virtual Machine Manager (VMM) infrastructure that contains 20 virtualization hosts. Each host

contains 20 virtual machines. You need to configure the network fabric. The solution must prevent the virtual machines from connecting to a VLAN. What should you do from the Network Site properties? A. Set the subnet to 192.168.1.0/20. B. Set the subnet to FD4A::/32. C. Set the VLAN ID to 0. D. Set the VLAN ID to 10. Answer: C Explanation: VLAN 0 means you want VLAN disabled. Use this setting when you don't care about VLAN IDs. QUESTION 47 Your network contains a server named Server1 that has System Center 2012 Virtual Machine Manager installed. You open the VMM Administrator Console as shown in the Administrator Console exhibit. (Click the Exhibit button.) A user named User1 is a member of Role2 and Role3. User1 must create Guest OS Profile in a VMM library. User1 opens the VMM Administrator Console as shown in User1 Console exhibit (Click the Exhibit button.) You need to ensure that User1 can create Guest OS Profile in a VMM library. What should you do? A. Add User1 to the Administrator group Server1. B. Instruct User1 to use a Run as Account. C. Modify the Scope of Role3. D. Modify the Permitted actions of Role3. Answer: D Explanation: In VMM, self-service users can create their own templates and profiles. The Author action for a self-service user role grants self-service users authoring rights. Users with authoring rights can create hardware profiles, guest operating system profiles, application profiles, SQL Server profiles, virtual machine templates, and service templates. <http://technet.microsoft.com/en-us/library/gg610573.aspx>



QUESTION 48 Your company has a private cloud that contains a Windows Server Update Services (WSUS) infrastructure as shown in the exhibit. (Click the Exhibit button.)



You plan to add the WSUS infrastructure to the System Center 2012 Virtual Machine Manager (VMM) infrastructure. You need to identify which WSUS servers can be added to the VMM infrastructure. Which server or servers should you identify? (Each correct answer presents part of the solution. Choose all that apply.) A. Server1 B. Server2 C. Server3 D. Server4 Answer: AB Explanation: <http://technet.microsoft.com/en-us/library/gg610633.aspx>

[http://technet.microsoft.com/en-us/library/cc720448\(v=ws.10\).aspx](http://technet.microsoft.com/en-us/library/cc720448(v=ws.10).aspx) QUESTION 49 You are the datacenter administrator for a company named Contoso Ltd. The network contains a server that has System Center 2012 Virtual Machine Manager (VMM) installed. You create two private clouds named Cloud1 and Cloud2. Developers at Contoso have three Windows Azure subscriptions.

Contoso creates a partnership with another company named Fabrikam, Inc. The Fabrikam network contains a server that has System Center 2012 Virtual Machine Manager (VMM) installed. The VMM server contains three clouds named Cloud3, Cloud4, and Cloud5. Developers at Fabrikam have two Windows Azure subscriptions. You deploy System Center 2012 App Controller at Contoso. You plan to manage the clouds and the Windows Azure subscriptions for both companies from the App Controller portal. You need to identify the minimum number of subscriptions and the minimum number connections required for the planned management. How many connections and subscriptions should you identify? A. two connections and two subscriptions B. two connections and five subscriptions C. five connections and five subscriptions D. five connections and two subscriptions Answer: B

QUESTION 50 Your network contains a server named Server1 that has System Center 2012 Virtual Machine Manager (VMM) installed. The network contains 1,000 virtual machines deployed on 100 Hyper-V hosts. The network contains a server named Server2 that has System Center 2012 Data Protection Manager (DPM) installed. You need to recommend a solution for the infrastructure to meet the following requirements:- Automatically backup and restore Virtual machines by using workflows,- Automatically backup and restore system states by using workflows, What should you do? (Each correct answer presents part of the solution. Choose two.) A. Install the Integration Pack for System Center Virtual Machine Manager (VMM). B. Deploy System Center 2012 Orchestrator. C. Install the Integration Pack for System Center Data Protection Manager (DPM). D. Deploy System Center 2012 App Controller. E. Deploy System Center 2012 Service Manager. F. Deploy System Center 2012 Operations Manager. Answer: BC Explanation: <http://technet.microsoft.com/en-us/library/hh420337>  
<http://technet.microsoft.com/en-us/library/hh830726.aspx> Guaranteed 100% Microsoft 70-247 Exam Pass OR Full Money Back! Braindump2go Provides you the latest 70-247 Dumps PDF & VCE for Instant Download!

Compared Before Buying Microsoft 70-247	
Pass4sure	Braindump2go
	100% Pass OR Money Back
100 Q&As	182 Q&As
\$125.99	\$99.99
/	Coupon Code: BDN2014

<http://www.braindump2go.com/70-247.html>