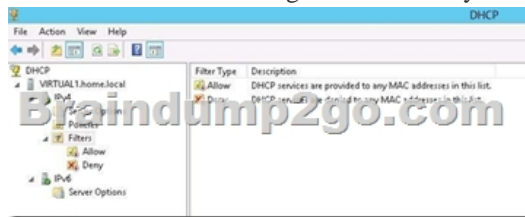


[New-Sep.-2016]100% Success-Braindump2go 70-410 PDF Dumps 485q Instant Download[NQ21-NQ25]

2016/09 New Microsoft 70-410: Installing and Configuring Windows Server 2012 R2 Exam Questions Updated Today!Free Instant Download 70-410 Exam Dumps (PDF & VCE) 485Q&As from Braindump2go.com Today! 100% Real Exam Questions! 100% Exam Pass Guaranteed! 1.|2016/09 Latest Microsoft 70-410 Exam Dumps (PDF & VCE) 485Q&As Download: <http://www.braindump2go.com/70-410.html>2.|2016/09 Latest Microsoft 70-410 Exam Questions & Answers: <https://drive.google.com/folderview?id=0B75b5xYLjSSNfjBSYTIYY1lpNFI3MmhuSGFGVWtsT3RfTjRUcjd1NTlnNUJXbnMzajJlQ0U&usp=sharing> QUESTION 21 Your network contains three servers that run Windows Server 2012 R2. The servers are configured as shown in the following table.

Server name	Server role
Server1	Active Directory Domain Services DHCP Server DNS Server
Server2	Remote Access DHCP Server
Server3	File and Storage Services

Server3 is configured to obtain an IP address automatically. You need to prevent Server3 from receiving an IP address from Server1. What should you create on Server1? A. A reservationB. A filterC. A scope optionD. An exclusion Answer: B Explanation:A. For clients that require a constant IP addressB. Filter to exclude MAC address of Server3C. Range of allowed IP's to be assignedD. Exclude range of IP'sMAC address based filtering ensure that only a known set of devices in the system are able to obtain an IPAddress from the DHCP

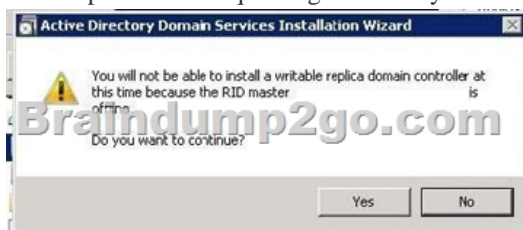


Reservation and Exclusion, two incredibly different concepts. An exclusion is an address or range of addresses taken from a DHCP scope that the DHCP server is not allowed to hand out. For example, if you have set a DHCP server to exclude the address range 192.168.0.1-192.168.0.10 then the only way a computer on your network would get an address of 192.168.0.4 would be if you assigned it statically on that machine. This is because DHCP knows NOT to give this range of IP addresses out. A reservation is a specific IP addresses that is tied to a certain device through its MAC address. For example, if we have a workstation on the network that requires a certain IP address, but we don't want to go through the trouble of assigning it statically, then we can create a reservation for it. So if the MAC address of the NIC on the computer is AA-BB-00FF-CC-AA and we want it to maintain the IP address of 192.168.0.100 then we would create a DHCP reservation under that particular scope saying that the IP address 192.168.0.100 is reserved only for the MAC address AA-BB-00-FF-CC-AA. <http://technet.microsoft.com/en-us/magazine/ff521761.aspx> [http://technet.microsoft.com/en-us/library/cc726954\(v=ws.10\).aspx](http://technet.microsoft.com/en-us/library/cc726954(v=ws.10).aspx) <http://www.windowsnetworking.com/kbase/WindowsTips/Windows2003/AdminTips/Network/DHCPReservationsandExclusions.html> QUESTION 22 Your network contains an Active Directory forest. The forest contains two domains named contoso.com and corp.contoso.com. The forest contains four domain controllers. The domain controllers are configured as shown in the following table.

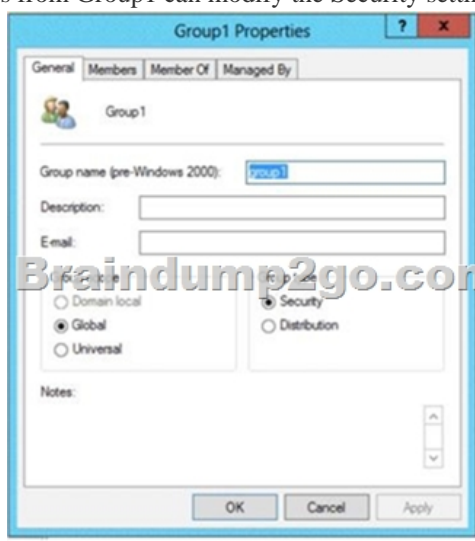
Name	Domain	Operating system	Configuration
DC1	contoso.com	Windows Server 2008 R2	PDC emulator Infrastructure master RID master
DC2	contoso.com	Windows Server 2008 R2	Domain naming master Schema master Global catalog
DC3	corp.contoso.com	Windows Server 2008 R2	PDC emulator Infrastructure master RID master
DC4	corp.contoso.com	Windows Server 2012	Global catalog

All domain controllers are DNS servers. In the corp.contoso.com domain, you plan to deploy a new domain controller named DCS. You need to identify which domain controller must be online to ensure that DCS can be promoted successfully to a domain controller. Which domain controller should you identify? A. DC1B. DC2C. DC3D. DC4 Answer: C Explanation: A. Wrong

DomainB. Wrong DomainC. Right domain, RID Master must be onlineD. Right domain but Not needed to be onlineRelative ID (RID) Master:Allocates active and standby RID pools to replica domain controllers in the same domain. (corp.contoso.com) Must be online for newly promoted domain controllers to obtain a local RID pool that is required to advertise or when existing domain controllers have to update their current or standby RID pool allocation.The RID master is responsible for processing RID pool requests from all domain controllers in a particular domain. When a DC creates a security principal object such as a user or group, it attaches a unique Security ID (SID) to the object. This SID consists of a domain SID (the same for all SIDs created in a domain), and a relative ID (RID) that is unique for each security principal SID created in a domain. Each DC in a domain is allocated a pool of RIDs that it is allowed to assign to the security principals it creates. When a DC's allocated RID pool falls below a threshold, that DC issues a request for additional RIDs to the domain's RID master. The domain RID master responds to the request by retrieving RIDs from the domain's unallocated RID pool and assigns them to the pool of the requesting DC At any one time, there can be only one domain controller acting as the RID master in the domain.



<http://support.microsoft.com/kb/223346> QUESTION 23Your network contains an Active Directory domain named contoso.com. You log on to a domain controller by using an account named Admin1. Admin1 is a member of the Domain Admins group. You view the properties of a group named Group1 as shown in the exhibit. (Click the Exhibit button.) Group1 is located in an organizational unit (OU) named OU1.You need to ensure that users from Group1 can modify the Security settings of OU1 only. What should you do from Active Directory Users and Computers?



A. Modify the Managed By settings on OU1.B. Right-click contoso.com and select Delegate Control.C. Right-click OU1 and select Delegate Control.D. Modify the Security settings of Group1. Answer: CExplanation:A. The distinguished name of the user that is assigned to manage this object.B. Would delegate control to the whole domainC. Delegates control to the OU OU1 onlyD. Wrong FeatureAn organizational unit is the smallest scope or unit to which you can assign Group Policy settings or delegate administrative authority. A user can have administrative authority for all organizational units in a domain or for a single organizational unit.You can delegate administrative control to any level of a domain tree by creating organizational units within a domain and delegating administrative control for specific organizational units to particular users or groups. Administrative control can be assigned to a user or group by using the Delegation of Control Wizard or through the Authorization Manager console. Both of these tools allow you to assign rights or permissions to particular users or groups.

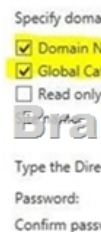
<http://technet.microsoft.com/en-us/library/cc758565%28v=ws.10%29.aspx>

<http://technet.microsoft.com/en-us/library/cc778807%28v=ws.10%29.aspx>

[http://msdn.microsoft.com/en-us/library/windows/desktop/ms676857\(v=vs.85\).aspx](http://msdn.microsoft.com/en-us/library/windows/desktop/ms676857(v=vs.85).aspx)

<http://technet.microsoft.com/en-us/library/cc732524.aspx> QUESTION 24Your network contains an Active Directory forest named

contoso.com. All domain controllers currently run Windows Server 2008 R2. You plan to install a new domain controller named DC4 that runs Windows Server 2012 R2. The new domain controller will have the following configurations:- Schema master- Global catalog server- DNS Server server role- Active Directory Certificate Services server role. You need to identify which configurations Administrators by using the Active Directory Installation Wizard. Which two configurations should you identify? (Each correct answer presents part of the solution. Choose two.) A. Transfer the schema master. B. Enable the global catalog server. C. Install the DNS Server role. D. Install the Active Directory Certificate Services role. Answer: AD Explanation: AD Installation Wizard will automatically install DNS and allows for the option to set it as a global catalog server. AD CS and schema must be done separately.



<http://technet.microsoft.com/en-us/library/hh831457.aspx> QUESTION 25 Your network contains an Active Directory domain named contoso.com. The domain contains two domain controllers. The domain controllers are configured as shown in the following table.

Name	Operating system	Operation master role
DC1	Windows Server 2012 R2	Domain naming master
DC2	Windows Server 2008 R2	Schema master PDC emulator RID master Infrastructure master

In the perimeter network, you install a new server named Server1 that runs Windows Server 2012 R2. Server1 is in a workgroup. You need to perform an offline domain join of Server1 to the contoso.com domain. What should you do first? A. Transfer the PDC emulator role to Dc1. B. Run the djoin.exe command. C. Run the dsadd.exe command. D. Transfer the infrastructure master role to DC1. Answer: B Explanation: A. Creates a new Active Directory computer. B. Use djoin for offline join in the perimeter network C. Adds specific types of objects to the directory. D. Add the local computer to a domain or workgroup. To perform an offline domain join, you run commands by using a new tool named Djoin.exe. You use Djoin.exe to provision computer account data into AD DS. You also use it to insert the computer account data into the Windows directory of the destination computer, which is the computer that you want to join to the domain. Create the account djoin /provision /domain winsrvtuts.wst /machine Win7 /savefile c:\yourFile.txt Run on the target system djoin /requestodj /loadfile c:\yourFile.txt /windowspath c:\Windows\localos

<http://technet.microsoft.com/en-us/library/ee617245.aspx> [http://technet.microsoft.com/en-us/library/ff793312\(v=ws.10\).aspx](http://technet.microsoft.com/en-us/library/ff793312(v=ws.10).aspx)
[http://technet.microsoft.com/en-us/library/cc753708\(v=ws.10\).aspx](http://technet.microsoft.com/en-us/library/cc753708(v=ws.10).aspx) <http://technet.microsoft.com/en-us/library/hh849798.aspx>
<http://winsrvtuts.com/2011/08/off-line-domain-join-with-djoin-exe/>

<http://technet.microsoft.com/en-us/library/offline-domain-join-djoin-step-bystep%28v=ws.10%29.aspx> !!!RECOMMEND!!!

1. | 2016/09 Latest Microsoft 70-410 Exam Dumps (PDF & VCE) 485Q&As Download: <http://www.braindump2go.com/70-410.html>

2. | 2016/09 Latest Microsoft 70-410 Exam Questions & Answers:

<https://drive.google.com/folderview?id=0B75b5xYLjSSNfjBSYTIYY1lpNFI3MmhuSGFGVWtsT3RfTjRUcjdlNTlnNUJXbnMzajJlQ0U&usp=sharing>