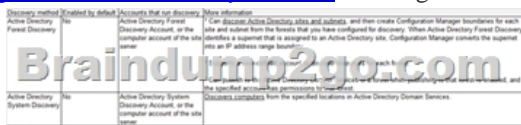


[New-Sep.-2016Braindump2go Microsoft 70-243 Exam PDF 167Q&As for 100% Passing 70-243 Exam[12-17

2016/09 New Microsoft 70-243: Administering and Deploying System Center 2012 Configuration Manager Exam Questions Released Today!Free Instant Download 70-243 Exam Dumps (PDF & VCE) 167Q&As from Braindump2go.com Today! **100% Real Exam Questions! 100% Exam Pass Guaranteed!** 1.|2016/09 Latest 70-243 Exam Dumps (PDF & VCE) 167Q&As Download: <http://www.braindump2go.com/70-243.html>2.|2016/09 Latest 70-243 Exam Questions & Answers: <https://drive.google.com/folderview?id=0B75b5xYLjSSNfkdreTRTTVpZRTBaMmMtbUFuU0RnNzBWNDYyOXNIUndGUEhzOTVabkFzdEk&usp=sharing> QUESTION 12Your network contains a System Center 2012 Configuration Manager environment. The hierarchy contains a Central Administration at Site1 and a primary site named Site. You discover that none of the packages created on Site1 are displayed in Site2. You need to identify whether there is a replication issue between the sites. What should you review? A. the Inventoryagent.log fileB. the Rcmctrl.log fileC. the Microsoft SQL Server replication diagnostic filesD. the Despool.log file Answer: BExplanation:Rcmctrl.logRecords the activities of database replication between sites in the hierarchy. QUESTION 13Your network contains two Active Directory forests named contoso.com and litwareinc.com. You implement System Center 2012 Configuration Manager in the contoso.com forest. You deploy the Configuration Manager client to all of the client computers in contoso.com by using a logon script.You need to ensure that the Configuration Manager client is automatically deployed to all of the client computers in the litwareinc.com forest. What should you do? (Choose all that Apply.) A. Configure a Client Push Installation account.B. Enable Client Push installation.C. Enable Active Directory System Discovery.D. Configure an administrative user.E. Enable Active Directory Forest Discovery. Answer: ABCExplanation: http://technet.microsoft.com/en-us/library/gg682042.aspx#BKMK_prereqs_computersPrerequisites for Windows Client Deployment in Configuration Manager - Prerequisites for Computer ClientsInstallation Method DependenciesClient push installation:Client push installation accounts are used to connect to computers to install the client and are specified on the Accounts tab of the Client Push Installation Properties dialog box. The account must be a member of the local administrators group on the destination computer. If you do not specify a client push installation account, the site server computer account will be used.The computer on which you are installing the client must have been discovered by at least one System Center 2012 Configuration Manager discovery method.The computer has an ADMIN\$ share.Enable client push installation to assigned resources must be selected in the Client Push Installation Properties dialog box if you want to automatically push the System Center 2012 Configuration Manager client to discovered resources.The client computer must be able to contact a distribution point or a management point to download the supporting files. You must have the following security permissions to install the Configuration Manager client by using client push: To configure the Client Push Installation account: Modify and Read permission for the Site object. To use client push to install the client to collections, devices and queries: Modify Resource and Read permission for the Collection object.The Infrastructure Administrator security role includes the required permissions to manage client push installation.Further information: <http://blogs.technet.com/b/configmgrteam/archive/2011/03/30/active-directory-forest-discovery-and-publishing-in-configuration-manager-2012-beta-2.aspx>Active Directory Forest Discovery and Publishing in Configuration Manager 2012 Beta 2Forest Discovery and Publishing OverviewTo improve manageability of an ever-changing network environment, Active Directory Forest Discovery is added in Configuration Manager 2012 Beta 2. With it, Configuration Manager can discover Active Directory forests, their domains, AD Sites and IP subnets. Because domain users (or domain computer accounts) have permission to query forest relationships, Active Directory Forest Discovery can return information about other forests and their trust direction. The system can programmatically connect to all the forests and build a complete mapping of the corporate environment. It can also cross forest boundaries using specific credentials for each forest regardless of the trust type. The information obtained through Active Directory Forest Discovery can be directly exported as boundaries or boundary groups. Changes to discovered data are updated dynamically and aged out from the database if no longer present in Active Directory Domain Services. The discovered data is also used when clients request a management point or distribution point to ensure they receive the best possible site system. http://technet.microsoft.com/en-us/library/gg712308.aspx#BKMK_DiscoveryMethodsPlanning for Discovery in Configuration ManagerDiscovery Methods in Configuration Manager



http://technet.microsoft.com/en-us/library/gg682132.aspx#BKMK_DeployClientComputersIntroduction to Client Deployment in

Configuration Manager - Deploying the Configuration Manager Client to Windows-Based Computers The following table lists the various methods that you can use to install the Configuration Manager client software on computers:

- Client push installation - Automatically installs the client to assigned resources and manually installs the client to resources that are not assigned.
- Software update point installation - Installs the client by using the Configuration Manager software updates feature.
- Group Policy installation - Installs the client by using Windows Group Policy.
- Logon script installation - Installs the client by using a logon script.
- Manual installation - Manually installs the client software.
- Upgrade installation by using application management - Upgrades clients to a newer version by using Configuration Manager application management. You can also use Configuration Manager 2007 software distribution to upgrade clients to System Center 2012 Configuration Manager.
- Automatic client upgrade
- Client imaging - Prestages the client installation in an operating system image.

QUESTION 14 Your network contains a System Center 2012 Configuration Manager environment. The environment contains a single primary site. You need to provide users with the ability to remotely reset their mobile device to the factory settings. What should you install?

A. Application Catalog web service point and Application Catalog website point
B. out of band service point and Application Catalog web service point
C. device management point and System Health Validator point
D. System Health Validator point and Application Catalog website point

Answer: A

Explanation: The Application Website point and the Application Web Service point are not required for client deployment. However, you might want to install them as part of your client deployment process, so that users can perform the following actions as soon as the Configuration Manager client is installed on Windows computers:

- Wipe their mobile devices.
- Search for and install applications from the Application Catalog.

<http://technet.microsoft.com/en-us/library/gg681976.aspx> to get your mobile devices managed in SCCM 2012. The basic steps are:

- Set up a working Microsoft PKI infrastructure
- Install and configure certificates to SCCM servers
- Install Enrollment Point Roles

may also want Enrollment Proxy Point for legacy mobile device. These site system roles are not required if you will manage mobile devices by using the Exchange Server connector, or if you install the mobile device legacy client (for example, for Windows CE), or if you request and install the client certificate on Mac computers independently from Configuration Manager. When using Network Access Protection (NAP) in Configuration Manager 2007, the System Health Validator point is needed to validate the statement of health from NAP-capable Configuration Manager clients to produce a client health state of compliant or non-compliant. It must be installed on a NAP health policy server.

QUESTION 15 Your network contains a Windows Server Update Services (WSUS) server. All client computers are configured as WSUS clients. All of the client computers have Windows Firewall enabled. Windows Firewall is configured to block File and Printer Sharing. Users are not configured as local Administrators on their client computers. You deploy System Center 2012 Configuration Manager. You need to identify which methods you can use to deploy the Configuration Manager client to any of the client computers. Which client installation methods should you identify? (Choose all that Apply.)

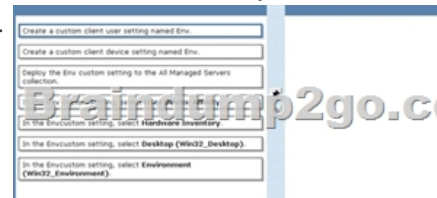
A. a logon script installation
B. a manual client installation
C. a software update-based client installation
D. a Client Push Installation
E. an Active Directory Group Policy-based installation

Answer: C

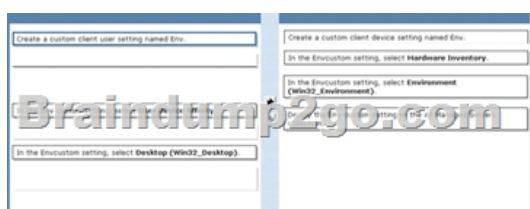
Explanation: The Logon script runs with the user's credentials. Manual installation also runs with the user's credentials. Software update point uses the Local System account and All client computers are configured as WSUS clients. So the firewall should not affect functionality. Client Push Installation requires File and Printer Sharing. Group Policy Installation requires File and Printer Sharing.

<http://technet.microsoft.com/en-us/library/cc787076%28v=ws.10%29.aspx> The firewall will block the client push installation and the GPO installation. For A and B you need administrative rights. The WSUS installation is performed with local system account and since they are WSUS clients the firewall will be opened for this type of installation.

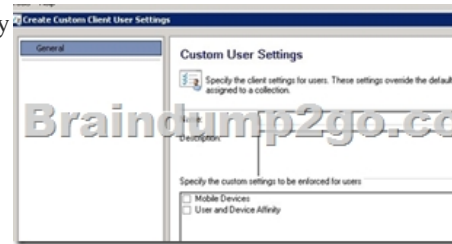
QUESTION 16 Drag and Drop Question Your network contains a System Center 2012 Configuration Manager environment. You create a collection named All Managed Servers. You need to inventory the environment variables of the All Managed Servers collection. What should you do? To answer, move the four appropriate actions from the list of actions to the answer area and arrange.



Answer:



Explanation: Cannot do : custom client user setting because it is for mobile and device affinity only



QUESTION 17 Your network contains a single Active Directory domain. The functional level of the domain is windows 2003. The domain contains the following server:- Ten servers that run Windows Server 2003- Twenty servers that run Windows Server 2008- One server that has Microsoft Exchange Server 2007 installed - One server that has System Center 2012 Configuration Manager installed Users have mobile devices that run Windows Mobile 6.5 and Windows Phone 7.0. You need to ensure that you can manage the settings of the mobile devices and perform remote device wipes by using Configuration Manager. What should you do? A. Upgrade the Exchange server to Exchange Server 2010. Configure an Exchange connector. B. Change the functional level of the domain to windows 2008. Upgrade the Exchange server to Exchange Server 2010. C. Upgrade all Windows 2003 domain controllers to Windows 2008. D. Upgrade all of the domain controllers to Windows 2008 R2. Configure an Exchange connector. Answer: A Explanation: Exchange Server Connector New in Configuration Manager 2012 is the Exchange ServerConnector. This enables SCCM to connect to multiple Exchange servers, centralizing management of any device that is able to be managed via Exchange ActiveSync from within ConfigMgr. This feature is just another way to access and control Exchange's mobile device management features, and as such functionality is necessarily limited. The main benefit of the Exchange Server Connector is being able to access functionality such as remote device wipe and settings control for multiple Exchange servers from within SCCM - there's no new management capability for an organization that already manages mobile devices with Exchange ActiveSync.* It's also worth noting that the Exchange Server Connector is only available for use with Exchange 2010 and later, and some versions of Exchange also require Configuration Manager 2012 SP1.

<http://myitforum.com/myitforumwp/2013/05/14/three-options-for-managing-mobiledevices->

using-sccm-2012-without-windows-intune/ !!!RECOMMEND!!! 1.|2016/09 Latest 70-243 Exam Dumps (PDF & VCE)

167Q&As Download:<http://www.braindump2go.com/70-243.html> 2.|2016/09 Latest 70-243 Exam Questions & Answers:

<https://drive.google.com/folderview?id=0B75b5xYLjSSNfkdreTRTTVpZRTBaMmMtbUFuU0RnNzBWNDYyOXNIUndGUEhzOTVabkFzdEk&usp=sharing>