

## [New-Sep.-2016]High Quality 70-410 VCE Dumps 485Q&As Free Share[NQ37-NQ42]

2016/09 New Microsoft 70-410: Installing and Configuring Windows Server 2012 R2 Exam Questions Updated Today!Free Instant Download 70-410 Exam Dumps (PDF & VCE) 485Q&As from Braindump2go.com Today! 100% Real Exam Questions! 100% Exam Pass Guaranteed! 1.]2016/09 Latest Microsoft 70-410 Exam Dumps (PDF & VCE) 485Q&As Download:

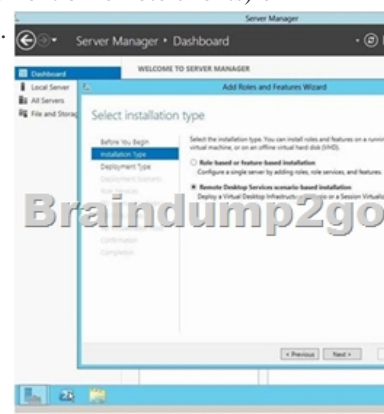
<http://www.braindump2go.com/70-410.html>2.]2016/09 Latest Microsoft 70-410 Exam Questions & Answers:

<https://drive.google.com/folderview?id=0B75b5xYLjSSNfjBSYTIYY1lpNFI3MmhuSGFGVWtsT3RfTjRUcjdlNTlnNUJXbnMzajJlQ0U&usp=sharing> QUESTION 37You have a server named Server1 that runs Windows Server 2012 R2. You add a 4-TB disk named Disk 5 to Server1. You need to ensure that you can create a 3-TB volume on Disk 5. What should you do? A. Create a storage pool.B. Convert the disk to a dynamic disk.C. Create a VHD, and then attach the VHD.D. Convert the disk to a GPT disk. Answer: DExplanation:MBR max is 2TB, the disk must be GPTFor any hard drive over 2TB, we need to use GPT partition. If you have a disk larger than 2TB size, the rest of the disk space will not be used unless you convert it to GPT. An existing MBR partition can't be converted to GPT unless it is completely empty; you must either delete everything and convert or create the partition as GPT. It is not possible to boot to a GPT partition, impossible to convert MBR to GPT without data loss.

<http://msdn.microsoft.com/en-us/library/windows/hardware/gg463525.aspx> QUESTION 38You have a server named Server1 that has a Server Core installation of Windows Server 2008 R2. Server1 has the DHCP Server server role and the File Server server role installed.You need to upgrade Server1 to Windows Server 2012 R2 with the graphical user interface (GUI). The solution must meet the following requirements: - Preserve the server roles and their configurations. - Minimize Administrative effort.What should you do? A. On Server1, run setup.exe from the Windows Server 2012 R2 installation media and select Server with a GUI.B. Start Server1 from the Windows Server 2012 R2 installation media and select Server Core Installation. When the installation is complete, add the Server Graphical Shell feature.C. Start Server1 from the Windows Server 2012 R2 installation media and select Server with a GUI.D. On Server1, run setup.exe from the Windows Server 2012 R2 installation media and select Server Core Installation. When the installation is complete, add the Server Graphical Shell feature Answer: DExplanation:A. Server is on 2008 R2 core, must install 2012 R2 core and then GUI B. Not least effortC. Not least effortD. Upgrade to 2012 R2 and install GUI shell

<http://technet.microsoft.com/en-us/library/jj574204.aspx> Upgrades that switch from a Server Core installation to the Server with a GUI mode of Windows Server 2012 R2 in one step (and vice versa) are not supported. However, after upgrade is complete, Windows Server 2012 R2 allows you to switch freely between Server Core and Server with a GUI modes. For more information about these installation options, how to convert between them, and how to use the new Minimal Server Interface and Features on Demand, see <http://technet.microsoft.com/library/hh831786>. QUESTION 39Your network contains two servers named Server1 and Server2 that run Windows Server 2012 R2. You need to install the Remote Desktop Services server role on Server2 remotely from Server1. Which tool should you use? A. The dsadd.exe commandB. The Server Manager consoleC. The Remote Desktop Gateway Manager consoleD. The Install-RemoteAccess cmdlet Answer: BExplanation:A. Adds specific types of objects to the directoryB. You can manage remote server by Server Manager and install roles/features C. Remote Desktop Gateway (RD Gateway) is a role service that enables authorized remote users to connect to resources on an internal corporate or private network, from any Internet-connected device that can run the Remote Desktop Connection (RDC) client. D. Performs prerequisite checks for DirectAccess (DA) to ensure that it can be installed, installs DA for remoteaccess (RA) (includes management of remote clients) or for management of remote clients only, and installsVPN (both Remote Access VPN and site-to-site VPN).

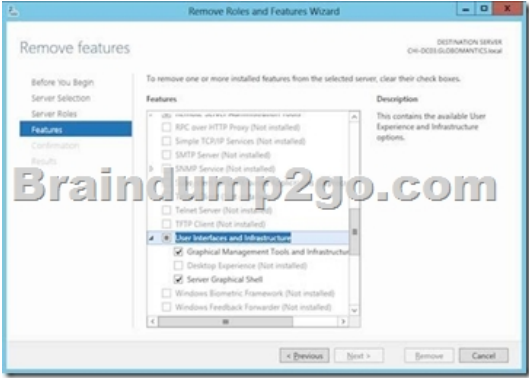
<http://technet.microsoft.com/en-us/library/jj574204.aspx> Upgrades that switch from a Server Core installation to the Server with a GUI mode of Windows Server 2012 R2 in one step (and vice versa) are not supported. However, after upgrade is complete, Windows Server 2012 R2 allows you to switch freely between Server Core and Server with a GUI modes. For more information about these installation options, how to convert between them, and how to use the new Minimal Server Interface and Features on Demand, see <http://technet.microsoft.com/library/hh831786>. QUESTION 39Your network contains two servers named Server1 and Server2 that run Windows Server 2012 R2. You need to install the Remote Desktop Services server role on Server2 remotely from Server1. Which tool should you use? A. The dsadd.exe commandB. The Server Manager consoleC. The Remote Desktop Gateway Manager consoleD. The Install-RemoteAccess cmdlet Answer: BExplanation:A. Adds specific types of objects to the directoryB. You can manage remote server by Server Manager and install roles/features C. Remote Desktop Gateway (RD Gateway) is a role service that enables authorized remote users to connect to resources on an internal corporate or private network, from any Internet-connected device that can run the Remote Desktop Connection (RDC) client. D. Performs prerequisite checks for DirectAccess (DA) to ensure that it can be installed, installs DA for remoteaccess (RA) (includes management of remote clients) or for management of remote clients only, and installsVPN (both Remote Access VPN and site-to-site VPN).



[http://technet.microsoft.com/en-us/library/cc753708\(v=ws.10\).aspx](http://technet.microsoft.com/en-us/library/cc753708(v=ws.10).aspx) <http://technet.microsoft.com/en-us/library/hh831456.aspx>

<http://technet.microsoft.com/en-us/library/cc725706.aspx> [http://technet.microsoft.com/en-us/library/hh918408\(v=wps.620\).aspx](http://technet.microsoft.com/en-us/library/hh918408(v=wps.620).aspx)

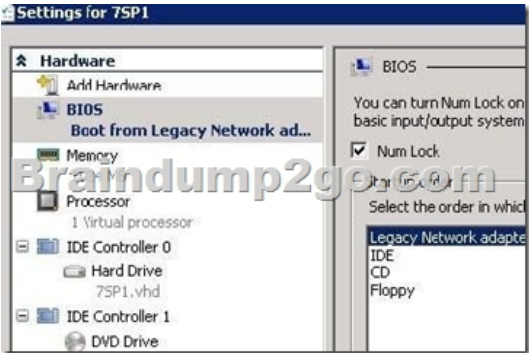
QUESTION 40 You have a server named Server1 that runs a full installation of Windows Server 2012 R2. You need to uninstall the graphical user interface (GUI) on Server1. You must achieve this goal by using the minimum amount of Administrative effort. What should you do? A. Reinstall Windows Server 2012 R2 on the server. B. From Server Manager, uninstall the User Interfaces and Infrastructure feature. C. From Windows PowerShell, run Uninstall-WindowsFeature PowerShell-ISE. D. From Windows PowerShell, run Uninstall-WindowsFeature Desktop-Experience. Answer: B Explanation: A. Not least effort B. Quick and Easy. Uninstalls PS-ISE. Doesn't remove all GUI components



<http://www.petri.co.il/switching-gui-server-core-windows-server-2012.htm> QUESTION 41 Your network contains a server named Server1 that runs Windows Server 2012 R2. Server1 has the Hyper-V server role installed. Server1 hosts four virtual machines named VM1, VM2, VM3, and VM4. Server1 is configured as shown in the following table.

Hardware component	Configuration
Processor	Eight quad-core CPUs that have non-uniform memory access (NUMA)
Memory	32 GB of RAM
Disk	Two local 4-TB disks
Network	Eight network adapters VMQ-supported PCI-SIG-supported

You install Windows Server 2012 R2 on VM2 by using Windows Deployment Services (WDS). You need to ensure that the next time VM2 restarts, you can connect to the WDS server by using PXE. Which virtual machine setting should you configure for VM2? A. NUMA topology B. Resource control C. Resource metering D. Virtual Machine Chimney E. The VLAN ID F. Processor Compatibility G. The startup order H. Automatic Start Action I. Integration Services J. Port mirroring K. Single-root I/O virtualization Answer: G Explanation: G. Configure the BIOS of the computer to enable PXE boot, and set the boot order so that it is booting from the network is first



[http://technet.microsoft.com/en-us/library/cc766320\(v=ws.10\).aspx](http://technet.microsoft.com/en-us/library/cc766320(v=ws.10).aspx) QUESTION 42 Your network contains an Active Directory domain named contoso.com. The domain contains two domain controllers. The domain controllers are configured as shown in the following table.

Name	Operating system	Operation master role
DC1	Windows Server 8	• Domain naming master • Schema master
DC2	Windows Server 2008 R2	• FSMC emulator • RID master • Infrastructure master

In the perimeter network, you install a new server named Server1 that runs a Server Core Installation of Windows Server 2012 R2. You need to join Server1 to the contoso.com domain. What should you use? A. The New-ADComputer cmdlet B. The djoin.exe command C. The dsadd.exe command D. The Add-Computer cmdlet Answer: D Explanation: A. Creates a new Active Directory computer. B. Use djoin for offline join in the perimeter network C. Adds specific types of objects to the directory. D. Add the local computer to a domain or workgroup. <http://technet.microsoft.com/en-us/library/ee617245.aspx>  
[http://technet.microsoft.com/en-us/library/ff793312\(v=ws.10\).aspx](http://technet.microsoft.com/en-us/library/ff793312(v=ws.10).aspx)  
[http://technet.microsoft.com/en-us/library/cc753708\(v=ws.10\).aspx](http://technet.microsoft.com/en-us/library/cc753708(v=ws.10).aspx) <http://technet.microsoft.com/en-us/library/hh849798.aspx>  
!!!RECOMMEND!!! 1.|2016/09 Latest Microsoft 70-410 Exam Dumps (PDF & VCE) 485Q&As Download:  
<http://www.braindump2go.com/70-410.html> 2.|2016/09 Latest Microsoft 70-410 Exam Questions & Answers:  
<https://drive.google.com/folderview?id=0B75b5xYLjSSnfjBSYTIYY1lpNFI3MmhuSGFGVWtsT3RfTjRUcjdlNTlnNUJXbnMzajJlQ0U&usp=sharing>