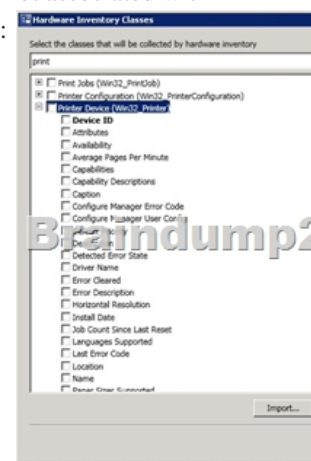


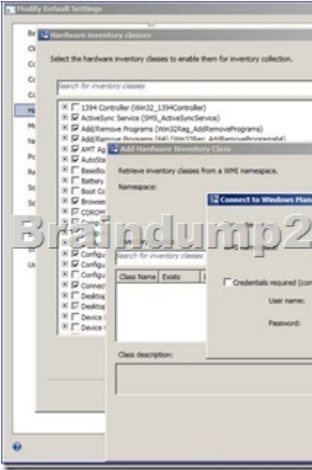
[New-Sep.-2016Microsoft 70-243 167Q&As VCE Files Free Download in Braindump2go[30-35

2016/09 New Microsoft 70-243: Administering and Deploying System Center 2012 Configuration Manager Exam Questions Released Today! Free Instant Download 70-243 Exam Dumps (PDF & VCE) 167Q&As from Braindump2go.com Today! **100% Real Exam Questions! 100% Exam Pass Guaranteed!** 1. [2016/09 Latest 70-243 Exam Dumps (PDF & VCE) 167Q&As Download: <http://www.braindump2go.com/70-243.html> 2. [2016/09 Latest 70-243 Exam Questions & Answers: <https://drive.google.com/folderview?id=0B75b5xYLjSSNfkdreTRTTVpZRTBaMmMtbUFuU0RnNzBWNDYyOXNIUndGUEhZOTVabkFzdEk&usp=sharing> QUESTION 30 Note: This question is part of a series of questions that use the same set of answer choices. An answer choice may be correct for more than one question in the series. Your network contains a System Center 2012 Configuration Manager environment. Your company deploys 1,000 client computers. You discover that information about printers fails to appear in any inventory queries or reports. Information about other hardware devices appears in the inventory queries and reports. You need to ensure that Configuration Manager data includes information about the printers. What should you do? A. Add a WMI class to the Hardware inventory Classes list. B. Enable a default WMI class in the Hardware Inventory Classes list. C. Add a file name to the Software Inventory configuration. D. Add a file name to the Hardware inventory configuration. E. Add a file name to Software Metering. F. Select Collect NOIDMIF files in Hardware Inventory. G. Add a WMI class to the Sms_def.mof file. H. Modify the Enable software inventory on clients setting. I. Modify the Enable hardware inventory on clients setting. Answer: B Explanation: <http://technet.microsoft.com/en-us/library/gg712290.aspx> How to Extend Hardware Inventory in Configuration Manager System Center 2012 Configuration Manager hardware inventory reads information about devices by using Windows Management Instrumentation (WMI). WMI is the Microsoft implementation of web-based Enterprise Management (WBEM), which is an industry standard for accessing management information in an enterprise environment. In previous versions of Configuration Manager, you could extend hardware inventory by modifying the file sms_def.mof on the site server. In System Center 2012 Configuration Manager, you no longer edit the sms_def.mof file as you did in Configuration Manager 2007. Instead, you can enable and disable WMI classes, and add new classes to collect by hardware inventory by using client settings. Configuration Manager provides the following methods to extend hardware inventory: Enable or disable existing inventory classes - You can enable or disable the default inventory classes used by Configuration Manager or you can create custom client settings that allow you to collect different hardware inventory classes from specified collections of clients. Add a new inventory class - You can add a new inventory class from the WMI namespace of another device. Import and export hardware inventory classes - You can import and export Managed Object Format (MOF) files that contain inventory classes from the Configuration Manager console. Create NOIDMIF Files - Use NOIDMIF files to collect information about client devices that cannot be inventoried by Configuration Manager. Create IDMIF Files - Use IDMIF files to collect information about assets in your organization that are not associated with a Configuration Manager client, for example, projectors, photocopiers and network printers. Further information:

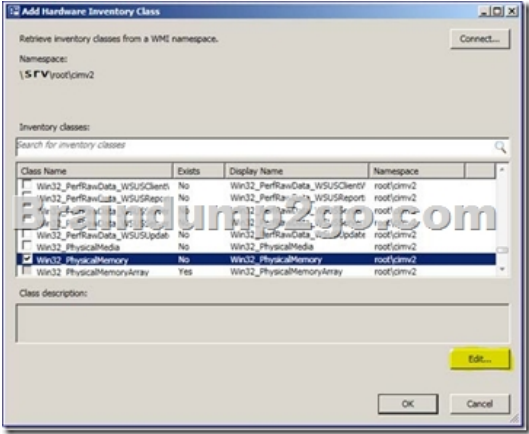


QUESTION 31 Note: This question is part of a series of questions that use the same set of answer choices. An answer choice may be correct for more than one question in the series. Your network contains a System Center 2012 Configuration Manager environment. Your company develops a custom hardware device and installs the device on all of the client computers in the research department. You discover that information about the device fails to appear in any inventory queries or reports. Information about other hardware devices appears in the inventory queries and reports. You need to ensure that Configuration Manager data includes

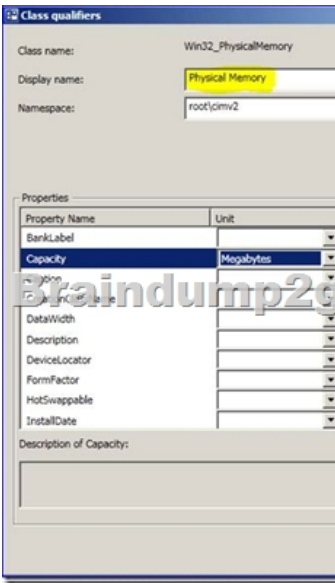
information about the custom hardware device.What should you do? A. Enable a default WMI class in the Hardware Inventory Classes list.B. Modify the Enable hardware inventory on clients setting.C. Add a WMI class to the Hardware inventory Classes list.D. Add a file name to the Software Inventory configuration.E. Select Collect NOIDMIF files in Hardware Inventory.F. Add a file name to the Hardware inventory configuration.G. Add a file name to Software Metering.H. Add a WMI class to the Sms_def.mof file.I. Modify the Enable software inventory on clients setting. Answer: CExplanation:Adding new device/class to hardware inventoryIn the hardware inventory class window click the add button Next click the 'Connect' button



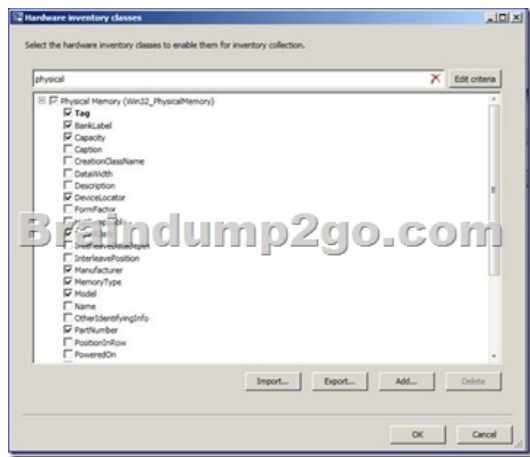
Select the desired class and click 'Edit'



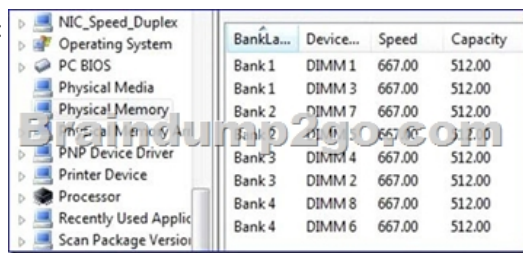
Give your new device/class a friendly name (instead of the default class name) You can also set the unit size



Now you can select the properties you want to add (as you did in the previous section).



You can see the result in the resource explorer:



Hardware inventory works by querying Windows Management Instrumentation (WMI) for all data from certain WMI classes. WMI includes classes for operating system configuration and entities (such as user accounts), installed software, software configuration, and other objects (such as for the logged on user). These classes are supplements to hardware classes. Hardware inventory collects information about many things besides hardware. For example, it can inventory software by collecting details about programs listed in Add or Remove Programs in Control Panel or programs that have been installed using Windows Installer. Most of your inventory needs can be served by hardware inventory collection alone. QUESTION 32 Note: This question is part of a series of questions that use the same set of answer choices. An answer choice may be correct for more than one question in the series. Your network contains a System Center 2012 Configuration Manager environment. Your company deploys a custom Application to 2,000 client computers by using Configuration Manager. The Application is not listed in Add Remove Programs. You discover that information about the Application fails to appear in the inventory queries and inventory reports. You verify that information about other Applications appear in the inventory reports. You need to ensure that Configuration Manager data includes installation information about the custom Application. What should you do? A. Add a file name to Software Metering. B. Add a WMI class to the Hardware Inventory Classes list. C. Add a file name to the Hardware Inventory configuration. D. Enable a default WMI Class in the Hardware Inventory Classes list. E. Select Collect NOIDMIF files in Hardware Inventory. F. Add a file name to the Software Inventory configuration. G. Modify the Enable hardware inventory on Clients setting. H. Add a WMI class to the Sms_def.mof file. Answer: F Explanation: Inventory of Custom application sw, the sw is not in add remove program. Add a File name to the SW Inventory configuration. Reg key for Add/remove program is :

HKEY_LOCAL_MACHINE\Software\Microsoft\Windows\CurrentVersion\Uninstall. If custom sw is not in Add/remove list then, wmi still has the custom app info by query another reg key: HKEY_CLASSES_ROOT\Installer\Products but safer to use sw inventory (#file inventory). Software inventory works by scanning the disks on each computer to find files and gather information about files. You can also configure software inventory to collect specific files when it finds them. Software Inventory = File Inventory. In the Configuration Manager console, Administration, Client Settings, Default Client Settings, Properties, Default Settings, Software Inventory. In the Device Settings list, configure the following values: Enable software inventory on clients. From the drop-down list, select True. Schedule software inventory and file collection schedule Configure the client settings that you require: Path, file name xxx.exe... <http://technet.microsoft.com/en-us/library/cc180952.aspx#EBAA> QUESTION 33 Note: This question is part of a series of questions that use the same set of answer choices. An answer choice may be correct for more than one question in the series. Your network contains a System Center 2012 Configuration Manager environment. Your company deploys a third-party Application to 10,000 client computers. You need to ensure that you can run a report that lists all of the client computers that ran the Application last month. What should you do? A. Modify the Enable hardware inventory on clients setting. B. Enable a default

WMI class in the Hardware Inventory Classes list.C. Modify the Enable software inventory on clients setting.D. Add a file name to the Hardware Inventory configuration.E. Add a WMI class to the Hardware Inventory Classes list.F. Add a file name to the Software Inventory configuration.G. Add a file name to Software Metering.H. Add a WMI class to the Sms_def.mof file.I. Select Collect NOIDMIF files in Hardware Inventory. Answer: GExplanation:

<http://technet.microsoft.com/en-us/library/gg682005.aspx>Introduction to Software Metering in Configuration ManagerUse software metering in System Center 2012 Configuration Manager to monitor and collect software usage data from Configuration Manager clients.To collect this usage data, configure software metering rules or use the Configuration Manager inventory to generate these rules automatically. Client computers evaluate these rules and collect metering data to send to the site. QUESTION 34Your network contains a System Center 2012 Configuration Manager environment. You need to create a report that lists all of the client computers that do not have an Application named App1 instated.Which query should you use to create the report? A. SELECT SYS.Netbios_Name0, ARP.DisplayName0FROM v_R_System AS SYS INNER JOINv_GS_ADD_REMOVE_PROGRAMS AS ARP ON SYS.ResourceID = ARP.ResourceID WHERE ARP.DisplayName0 NOT IN ('App1')B. SELECT SYS.Netbios_Name0 from v_R_System SYSWHERE SYS.ResourceID IN(SELECT SYS.ResourceIDFROM v_R_System AS SYS INNER JOIN v_GS_ADD_REMOVE_PROGRAMS AS ARP ON SYS.ResourceID = ARP.ResourceID. WHERE ARP.DisplayName0 = 'App1')C. SELECT SYS.Netbios_Name0 from v_R_System SYSWHERE SYS.ResourceID NOT IN(SELECT SYS.ResourceIDFROM v_R_System AS SYS INNER JOINv_GS_ADD_REMOVE_PROGRAMS AS ARP ON SYS.ResourceID = ARP.ResourceID WHERE ARP.DisplayName0 = 'App1')D. SELECT SYS.Netbios_Name0, ARP.DisplayName0FROM v_R_System AS SYS INNER JOINv_GS_ADD_REMOVE_PROGRAMS AS ARP ON SYS.ResourceID = ARP.ResourceID WHERE ARP.DisplayName0 NOT LIKE 'App1' Answer: CExplanation:SELECT computer name FROM table v_R_System (SQL Syntax) WHERE resource ResourceID is NOT INAdd Remove Programs WHERE DisplayName0 = 'App1'

http://www.w3schools.com/sql/sql_join_inner.aspSQL INNER JOIN KeywordThe INNER JOIN keyword returns rows when there is at least one match in both tables. QUESTION 35Network contains a System Center 2012 Configuration Manager environment. You have the following query:SelectR.Name,U.UserNamefromSMS_R_System Rjoin SMS_R_User Uon R.LastLogonUserName = U.UserNameYou need to ensure that all of the client computers are listed in the query results.Which join type should you use? A. LEFTB. FULLC. INNERD. RIGHT Answer: AExplanation:http://www.w3schools.com/sql/sql_join_left.aspSQL LEFT JOIN KeywordThe LEFT JOIN keyword returns all rows from the left table (table_name1), even if there are no matches in the right table (table_name2).Further information:http://www.w3schools.com/sql/sql_join_full.aspSQL FULL JOIN KeywordThe FULL JOIN keyword return rows when there is a match in one of the tables.http://www.w3schools.com/sql/sql_join_inner.aspSQL INNER JOIN KeywordThe INNER JOIN keyword returns rows when there is at least one match in both tables.http://www.w3schools.com/sql/sql_join_right.aspSQL RIGHT JOIN KeywordThe RIGHT JOIN keyword returns all the rows from the right table (table_name2), even if there are no matches in the left table (table_name1). !!!RECOMMEND!!! 1.|2016/09 Latest 70-243 Exam Dumps (PDF & VCE) 167Q&As Download:<http://www.braindump2go.com/70-243.html> 2.|2016/09 Latest 70-243 Exam Questions & Answers:
<https://drive.google.com/folderview?id=0B75b5xYLjSSnfkdreTRTTVpZRTBaMmMtbUFuU0RnNzBWNDYyOXNIUndGUEhzOTVabkFzdEk&usp=sharing>