

## Same Microsoft 70-662 Practice Tests Questions From Microsoft Centre 100% Pass! (71-80)

**MICROSOFT NEWS: 70-662 Exam Questions has been Updated Today! Get Latest 70-662 VCE and 70-662 PDF Instantly!**

**Welcome to Download the Newest Braindump2go 70-662 VCE&70-662 PDF Dumps:**

<http://www.braindump2go.com/70-662.html> (507 Q&As) 100% Pass 70-662 Real Test is not a dream! Braindump2go Latest Released 70-662 Exam Practice Exam Dumps will help you pass 70-662 Exam one time easily! Free Sample Exam Questions and Answers are offered for free download now! Quickly having a try today! Never lose this valuable chance! Exam Code: 70-662 Exam Name TS: Microsoft Exchange Server 2010, Configuring Certification Provider: Microsoft Corresponding Certifications: MCITP, MCITP: Enterprise Messaging Administrator on Exchange 2010, MCTS, MCTS: Microsoft Exchange Server 2010, Configuring 70-662 Dumps, 70-662 PDF, 70-662 PDF eBook, 70-662 Braindump, 70-662 Study Guide, 70-662 Book, 70-662 Practice Test, 70-662 Dumps PDF, 70-662 VCE, 70-662 VCE Dumps, 70-662 Valid Dumps, 70-662 Exam Questions Free, 70-662 Dumps, 70-662 Free Dumps, 70-662 Questions and Answers Free, 70-662 Braindump PDF, 70-662 Braindump VCE, 70-662 Preparation

### TS: Microsoft Exchange Server 2010, Configuring: 70-662



Questions and Answers : 507 Q&As

Updated: Jan 02, 2016

~~\$129.99~~ **\$99.99**

PDF DEMO

**CHECK OUT**

**Product Description Exam Number/Code: 70-662**

**Exam Number/Code: 70-662**

"TS: Microsoft Exchange Server 2010, Configuring", also known as 70-662 exam, is a Microsoft Certification. With the complete collection of questions and answers, Braindump2go has assembled to take you through 507 Q&As to your 70-662 Exam preparation. In the 70-662 exam resources, you will cover every field and category in Microsoft MCITP helping to ready you for your successful Microsoft Certification.

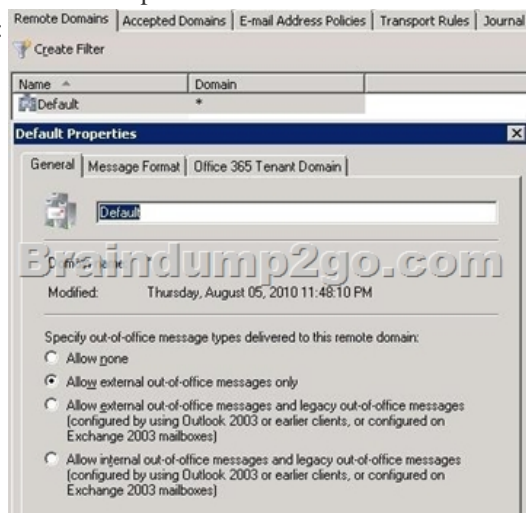
**Free Demo Download**

Braindump2go offers free demo for 70-662 exam (TS: Microsoft Exchange Server 2010, Configuring). You can check out the interface, question quality and usability of our practice exams before you decide to buy it.

☒ **Printable PDF** ☒ **Premium VCE + VCE Simulator**

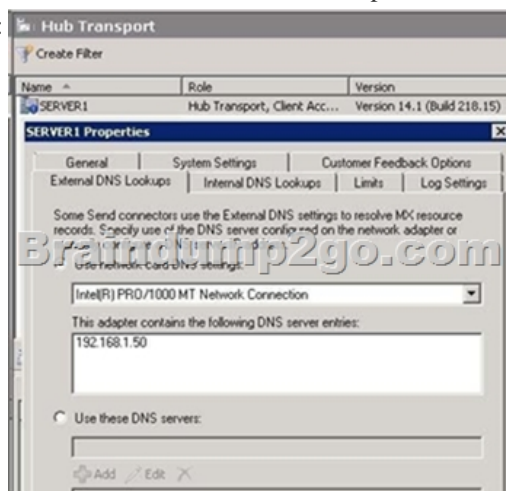
**QUESTION 71** You have an Exchange organization named contoso.com. All servers in the organization have Exchange Server 2010 Service Pack 1 (SP1) installed. You need to add a disclaimer to all e-mail messages sent by members of a mail-enabled group named Group1. The solution must only affect e-mail messages sent to the Internet. What should you do? A. From the Exchange Management Console, create a transport rule. B. From the Exchange Management Console, modify the mail flow settings of Group1. C. From the Exchange Management Shell, run the New-RemoteDomain cmdlet, and then run the Set-SendConnector cmdlet. D. From the Exchange Management Shell, run the New-SystemMessage cmdlet, and then run the Set-SendConnector cmdlet. Answer: A **QUESTION 72** Your company acquires a new Internet domain name. You need to ensure that all users can receive e-mail messages sent to the new domain name. Which two actions should you perform? (Each correct answer presents part of the solution. Choose two.) A. Create a sharing policy. B. Create a remote domain. C. Create an accepted domain. D. Create an e-mail address policy. E. Modify the properties of the default Receive connector. Answer: CD **QUESTION 73** You have an Exchange Server 2010 organization. You acquire a new Internet domain name. Users report that they cannot receive e-mail sent to the new domain name. You verify that all users have the new domain name configured as an e-mail address suffix. You need to ensure that users can receive e-mail sent from the Internet to the new domain name. What should you create? A. an Authoritative Accepted Domain B. an External Relay Accepted Domain C. a new Receive connector D. a remote domain Answer: A **QUESTION 74** You have an Exchange Server 2010 organization that contains an accepted domain named fabrikam.com. You need to automatically forward to another server all e-mail messages sent to fabrikam.com recipients who do not exist in the organization. Which properties should you modify? A. accepted domain B. default e-mail address policy C. default Receive connector D. default remote domain Answer: A **QUESTION 75** You have an Exchange Server 2010 organization named contoso.com. Your company acquires a company named Fabrikam, Inc. You plan to create new mailboxes for each user from Fabrikam. You need to ensure that each new mailbox can receive e-mail messages sent to fabrikam.com. The solution must not prevent the organization from receiving e-mails sent to contoso.com. What should you do? A. Create an accepted domain and then create a new e-mail address policy. B. Create a remote domain and then modify the default e-mail address policy. C. Create a Receive connector and

then create a managed folder mailbox policy.D. Modify the default accepted domain and then modify the default e-mail address policy. Answer: A QUESTION 76You have an Exchange Server 2010 organization named contoso.com. All users configure internal and external Out Of Office messages. You need to ensure that internal Out Of Office messages are sent to senders from the fabrikam.com domain. What should you create and configure? A. a new accepted domainB. a new Receive connectorC. a new remote domainD. a new Send connector Answer: CExplanation:



QUESTION 77You have an Exchange organization named Contoso, Ltd. All servers in the organization have Exchange Server 2010 SP1 installed. The organization contains an Edge Transport Server. Users from a company named Fabrikam, Inc., send email messages over the Internet by using the @fabrikam.com email address suffix. Contoso acquires Fabrikam. You need to ensure that messages sent from Fabrikam users to Contoso users have the contoso.com email address suffix in their source address. What should you create? A. an accepted domainB. an address rewrite entryC. an e-mail address policyD. a Receive connector Answer: B Explanation:You use address rewriting to present a consistent appearance to external recipients of messages from your Exchange 2010 organization. Address rewriting can be valuable to organizations that use third-party vendors to provide e-mail support and services. Customers and partners expect email messages to come from the organization, not a third-party vendor. Similarly, after a merger or acquisition, an organization might want all email messages to appear to come from the single new organization. The address rewriting feature frees organizations to structure their businesses by business requirements instead of by technical requirements or limitations. You can also use address rewriting to enable appropriate routing of inbound messages from outside your Exchange 2010 organization to internal recipients. Address rewriting enables replies to messages that were rewritten to be correctly routed to the original sender of the rewritten message. You configure Address Rewriting agents on the Receive connector and Send connector on a computer that has the Edge Transport server role installed. EMS: Enable-TransportAgent -Identity "Address Rewriting Inbound agent" New-AddressRewriteEntry-name "joe@contoso.com to support@northwindtraders.com"-InternalAddress joe@contoso.com-ExternalAddress support@northwindtraders.com <http://technet.microsoft.com/en-us/library/aa996806>

<http://technet.microsoft.com/en-us/library/bb123966.aspx> QUESTION 78You have an Exchange organization. All servers in the organization have Exchange Server 2010 Service Pack 1 (SP1) installed. The network contains internal DNS servers. You need to ensure that the Hub Transport servers use external DNS servers when they resolve Internet names. What should you modify? A. the message delivery properties of the Hub Transport global settingsB. the properties of the default remote domainC. the properties of the Hub Transport server objectD. the properties of a Send connector Answer: CExplanation:Configured on the Hub Transport server properties window, External DNS lookups tab:



<http://technet.microsoft.com/en-us/library/bb123514.aspx> QUESTION 79 You have an Exchange Server 2010 organization. Your network contains an Edge Transport server named Edge1 and a Hub Transport server named Hub1. You configure EdgeSync synchronization between Hub1 and Edge1. A month later, you install a second Hub Transport server named Hub2 in the same Active Directory site. You need to ensure that Edge1 synchronizes information from Hub1 and Hub2. What should you do? A. Create a new subscription file and then import the new subscription file to Hub1 and Hub2. B. Remove the Edge Subscription from Edge1 and then run the ImportEdgeConfig.ps1 script on Hub2. C. Copy the subscription file from Hub1 to Hub2 and then run the New-EdgeSubscription cmdlet on Hub2. D. Move Hub2 to a separate Active Directory site. Create a new subscription file on Edge1 and then run the New-EdgeSubscription cmdlet on Hub2. Answer: A Explanation: B is incorrect as the ImportEdgeConfig.ps1 script creates a clone of the Edge Transport server. C is incorrect as we need to create a new subscription file before we can copy it to Hub2. (If we use the old file, it won't work. There is a TTL of 24 hours that would have expired by now). D is incorrect because Edge Transport servers can only be associated with one AD site at a time. Reference:

<http://technet.microsoft.com/en-us/library/aa997438> (there is a note about 3/4 down the article that mentions this as the correct step).

QUESTION 80 You have an Exchange Server 2010 Mailbox server that contains multiple mailbox databases. You need to ensure that you receive an e-mail alert if the volume that contains the mailbox database files has less than 25 percent of free space. What should you do? A. Create a new Data Collector Set. B. Create a new Event Viewer Subscription. C. Attach a new task to the Application event log. D. Modify the properties of the mailbox database objects. Answer: A Latest 70-662 Questions and Answers from Microsoft Exam Center Offered by Braindump2go for Free Share Now! Read and remember all Real Questions Answers, Guaranteed Pass 70-662 Real Test 100% Or Full Money Back!

#### TS: Microsoft Exchange Server 2010, Configuring: 70-662



Questions and Answers : 507  
Q&As

Updated: Jan 02, 2016

~~\$420.99~~ **\$99.99**

[PDF DEMO](#)

[CHECK OUT](#)

**Product Description Exam Number/Code: 70-662**

**Exam Number/Code: 70-662**

"TS: Microsoft Exchange Server 2010, Configuring", also known as 70-662 Certification. With the complete collection of questions and answers, Braindump2go assembled to take you through 507 Q&As to your 70-662 Exam preparation resources, you will cover every field and category in Microsoft MCITP help your successful Microsoft Certification.

#### Free Demo Download

Braindump2go offers free demo for 70-662 exam (TS: Microsoft Exchange Server 2010, Configuring). You can check out the interface, question quality and usage of exams before you decide to buy it.

☒ **Printable PDF** ☒ **Premium VCE + VCE Simulator**

FREE DOWNLOAD: NEW UPDATED 70-662 PDF Dumps & 70-662 VCE Dumps from Braindump2go:

<http://www.braindump2go.com/70-662.html> 507 Q&As)