

2015 Latest Braindump2go Microsoft 70-642 Dumps PDF Free Download (351-360)

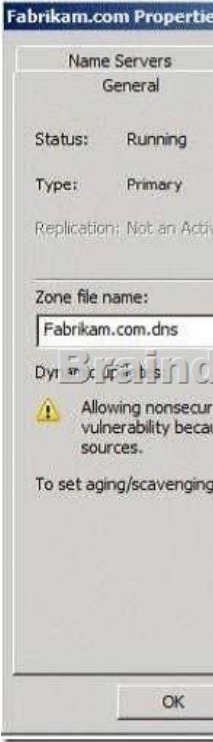
Do you want to pass Microsoft 70-642 Exam ? If you answered YES, then look no further. Braindump2go offers you the best 70-642 exam questions which cover all core test topics and certification requirements. All REAL questions and answers from Microsoft Exam Center will help you be a 70-642 certified! Vendor: Microsoft Exam Code: 70-642 Exam Name: TS: Windows Server 2008 Network Infrastructure, Configuring Keywords: 70-642 Exam Dumps,70-642 Practice Tests,70-642 Practice Exams,70-642 Exam Questions,70-642 Dumps,70-642 PDF,70-642 VCE,70-642 Study Guide

Compared Before Buying Microsoft 70-

Pass4sure	Braindump2go
Not In Stock	100% Pass OR Money Back
/	448 Q&As – Real Questions
/	\$99.99
/	Coupon Code: BDNT2014

QUESTION 351Your network contains a server named Server1 that runs Windows Server 2008 R2. Server1 has the Network Policy Server (NPS) role service installed.You need to ensure that the NPS log files on Server1 contain information about the duration of client connections. What should you do? A. Enable the Authentication requests setting.B. Configure the DTS Compliant log file format.C. Configure the IAS (Legacy) log file format.D. Enable the Accounting requests setting. Answer: B Explanation:The DTS Compliant log format is the newest one and only its XML have attributes for session duration such as Acct-Session-Time = "The length of time (in seconds) for which the session has been active.

[http://technet.microsoft.com/en-us/library/cc771748\(v=ws.10\).aspx](http://technet.microsoft.com/en-us/library/cc771748(v=ws.10).aspx) QUESTION 352Your network contains a domain controller named DC1.DC1 hosts a zone named fabhkam.com. The properties of the zone are shown in the exhibit.(Click the Exhibit button.) You need to ensure that only secure dynamic updates are accepted for the fabrikam.com zone. What should you do first?



A. Configure the zone to be stored in Active Directory.B. Change the zone to a secondary zone.C. Pause the zone.D. Modify the NTFS permissions of the zone file. Answer: A QUESTION 353Your network contains an Active Directory domain. The domain contains several VPN servers that run Windows Server 2008 R2.You need to log the time and the date users establish VPN connections to the network. The log must be stored in a central location.What should you configure on the VPN servers? A. the Windows Accounting accounting providerB. connection request policiesC. health policiesD. the RADIUS Accounting accounting provider Answer: DExplanation:RADIUS accounting logs information about dial-in connections. This information is

often used for billing purposes. QUESTION 354 Your network contains a DNS server that runs Windows Server 2008 R2 Service Pack 1 (SP1). You need to prevent the DNS server from accepting updates for cached resource records until the time-to-live (TTL) value of the cached resource records expires. Which tool should you use? (Each correct answer presents a complete solution. Choose two.) A. Server Manager B. Netsh C. DNS Manager D. Regedit E. Dnscmd F. Dns Answer: DE Explanation: Open an elevated command prompt. Type the following command, and then press ENTER: `dnscmd /Config /CacheLockingPercent <percent>` Restart the DNS Server service. To configure cache locking using the Windows interface Click Start, click Run, type `regedit.exe`, and then press ENTER. In Registry Editor, open `HKEY_LOCAL_MACHINE\SYSTEM\CurrentControlSet\Services\DNS\Parameters`. If the `CacheLockingPercent` registry key is not present, right-click Parameters, click New, click DWORD (32-bit) Value, and then type `CacheLockingPercent` for the name of the new registry key. Double-click the `CacheLockingPercent` registry key. Under Base, choose Decimal, under Value data type a value from 0 to 100 for the cache locking percent, and then click OK. Close Registry Editor. Restart the DNS Server service. [http://technet.microsoft.com/en-us/library/ee649148\(v=ws.10\).aspx](http://technet.microsoft.com/en-us/library/ee649148(v=ws.10).aspx)

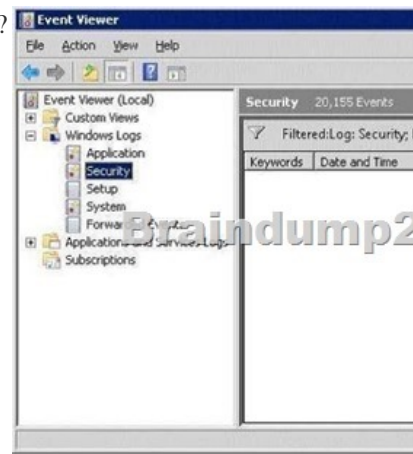
QUESTION 355 A corporate network includes two servers named File1 and File2 that run Windows Server 2008 R2. You need to ensure that a specific user can schedule Data Collector Sets (DCSs) on File2. The solution must minimize the number of rights assigned to the user. What should you do? A. Add the user to the Performance Log Users group on File2. B. Assign the Profile single process user right to the user on File2. C. Assign the Bypass traverse checking user right to the user on File2. D. Add the user to the Performance Monitor Users group on File2. Answer: A

QUESTION 356 Your company is implementing Network Access Protection (NAP) with DHCP enforcement. You need to define which network resources non-compliant client computers can access. What should you configure? A. remediation server groups B. health policies C. connection request policies D. system health validators (SHVs) Answer: A Explanation: Remediation server groups are used to specify servers that are available to noncompliant Network Access Protection (NAP) clients for the purpose of remediating their health state to comply with health requirements. The type of remediation servers that are required depend on your health requirements and network access methods. <http://technet.microsoft.com/en-us/library/dd759158.aspx>

QUESTION 357 You need to mount a VHD file that was created by using Windows Server Backup. Which tool should you use? A. Storage Explorer B. Imagex C. Disk Management D. Mount Answer: C Explanation: Disk Management - How to Mount and Unmount VHD Images: <http://www.7tutorials.com/disk-management-how-mount-and-unmount-vhd-images>

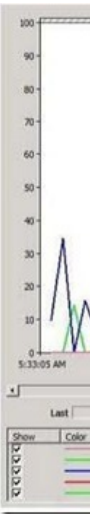
QUESTION 358 Your network contains a server named DC1 that has the DHCP Server server role installed. Clients located on the same subnet as DC1 are assigned valid IP addresses from DC1. Clients located on a different subnet are not assigned IP addresses from DC1. You verify that there is network connectivity between the two subnets. You need to ensure that the clients on both of the subnets can receive IP addresses from DC1. What should you do? A. Authorize DC1 in Active Directory. B. Increase the database cleanup interval. C. Configure Routing Information Protocol version 2 (RIPv2) on the router. D. Configure a DHCP Relay Agent. E. Restore the database from a backup. F. Configure name protection. G. Reconcile the scope. H. Configure DHCP link layer-based filtering. I. Modify the start address. J. Configure Open Shortest Path First (OSPF) on the router. K. Compact the database. Answer: D

QUESTION 359 Your network contains a server named Server1 that runs Windows Server 2008 R2 Service Pack 1 (SP1). You log on to Server1 by using an account named Admin1, and then you open Event Viewer as shown in the exhibit. (Click the Exhibit button.) You need to ensure that you can view all of the events in the Security log. What should you do?



A. From the Local Group Policy Editor, set Retain old events to Enabled for the Security log. B. From a command prompt, run `net localgroup /add "Event Log Readers" Admin1`. C. From Event Viewer, right-click Security, and then click Refresh. D. From the Local Group Policy Editor, set Log access to Enabled for the Security log. E. From Event Viewer, right-click Security, and then

click Clear Filter. Answer: E QUESTION 360Your network contains a server named Server1 that runs Windows Server 2008 R2 Service Pack 1 (SP1). Server1 has Microsoft SQL Server 2008 R2 and the File Services server role installed.Users report that access to Server1 during the morning is very slow.An administrator creates a Data Collector Set and provides the results shown in the exhibit. (Click the Exhibit button.)You need to log the CPU utilization of the processes running on Server1 if the CPU utilization exceeds 85 percent for more than one minute.What should you do? (Each correct answer presents part of the solution. Choose two.)



- A. Configure an action on the performance alert to run the systempropertiesperformance.exe command.B. Configure a trigger on the performance alert to start the System Performance Data Collector Set.C. Enable the SQLLogger event trace session.D. Create a scheduled task that runs the Get-PSProvider cmdlet.E. Create a Data Collector Set that has a performance alert for Processor (_Total)%Processor Time. Answer: BE All 448 Microsoft 70-642 Exam Dumps Questions are the New Checked and Updated! In recent years, the 70-642 certification has become a global standard for many successful IT companies. Looking to become a certified Microsoft professional? Download Braindump2go 2015 Latest Released 70-642 Exam Dumps Full Version and Pass 70-642 100%!

Compared Before Buying Microsoft 70-642 PDF & VCE!		
Pass4sure	Braindump2go	TestKing
	100% Pass OR Money Back	
Not In Stock	448 Q&As – Real Questions	199 Q&As – Practice
/	\$99.99	\$189.98
/	Coupon Code: BDNT2014	No Discount

<http://www.braindump2go.com/70-642.html>