

## 2015 Latest Updated 70-448 Study Guide Free Download in Braindump2go (321-330)

Do you want to pass Microsoft 70-448 Exam ? If you answered YES, then look no further. Braindump2go offers you the best 70-448 exam questions which cover all core test topics and certification requirements. All REAL questions and answers from Microsoft Exam Center will help you be a 70-448 certified! Exam Code: 70-448 Exam Name: Microsoft SQL Server 2008, Business Intelligence Development and Maintenance Certification Provider: Microsoft Corresponding Certifications: MCITP: Business Intelligence Developer 2008, MCSA, MCSA: SQL Server 2008, MCTS, MCTS: Microsoft SQL Server 2008, Business Intelligence Development and Maintenance Keywords: 70-448 Exam Dumps, 70-448 Practice Tests, 70-448 Practice Exams, 70-448 Exam Questions, 70-448 PDF, 70-448 VCE Free, 70-448 Book, 70-448 E-Book, 70-448 Study Guide, 70-448 Braindump, 70-448 Prep Guide

Compa

Pas

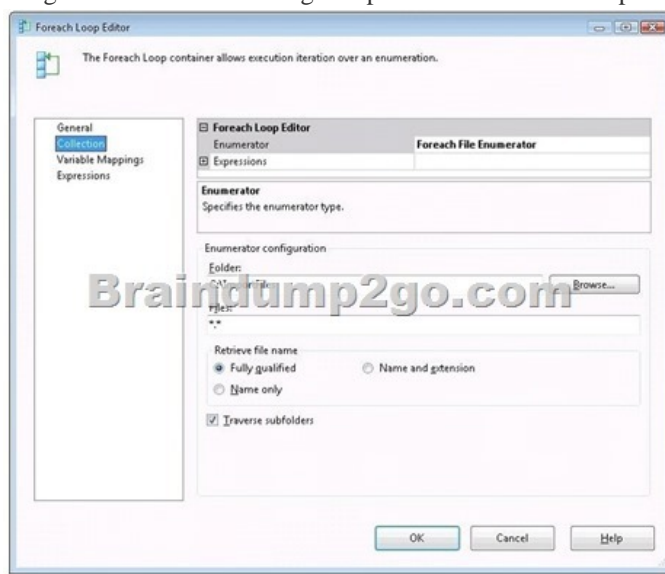
332 Q&As

\$125.99

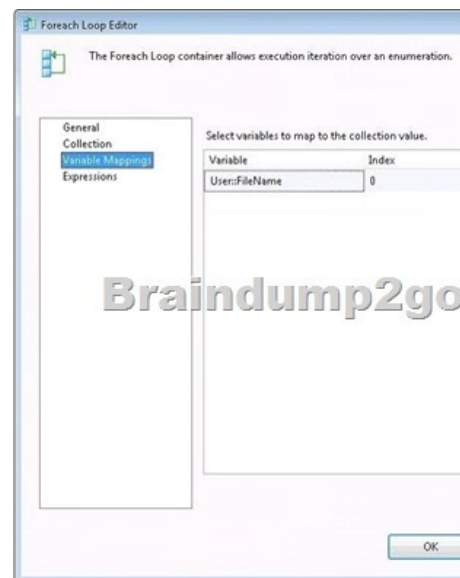
No Discour

**QUESTION 321** You are a database developer and you have about two years experience in creating business Intelligence (BI) by using SQL Server 2008. Now you are employed in a company named NaproStar which uses SQL Server 2008. You work as the technical support. Now you receive an e-mail from your company CIO, in the e-mail, the CIO assigns a task to you. You use SQL Server 2008 Reporting Services (SSRS) to create a solution. The solution contains a dimension named DimDay and a measure group named FinishedSales. The DimDay dimension contains an attribute which is named Week. The FinishedSales references the DimDay dimension. According to the requirement of the company CIO, you must make sure that the aggregations designed on FinishedSales always include the Week attribute. So what action should be performed? A. You should set the Usage property appropriately B. You should set the IsAggregatable property appropriately C. You should set the AggregationUsage property appropriately D. You should set the AttributeHierarchyEnabled property appropriately Answer: C Explanation: Review Aggregation Usage (Aggregation Design Wizard) SQL Server 2008 R2 Other Versions Use the Review Aggregation Usage page to configure aggregation usage settings. Options Default: Select to set the aggregation usage setting for the attribute to Default. By using this setting, the designer applies a default rule based on the type of attribute and dimension. Full: Select to set the aggregation usage setting for the attribute to Full. By using this setting, every aggregation for the cube must include this attribute or a related attribute that is lower in the attribute chain. The Full aggregation usage setting should be avoided when an attribute contains many members. If specified for multiple attributes or attributes that have many members, this setting might prevent aggregations from being designed because of excessive size. None: Select to set the aggregation usage setting for the attribute to None. By using this setting, no aggregation for the cube can include this attribute. Unrestricted: Select to set the aggregation usage setting for the attribute to Unrestricted. By using this setting, no restrictions are put on the aggregation designer; however, the attribute must still be evaluated to determine whether it is a valuable aggregation candidate. Set All to Default: Select to set the aggregation usage settings for all attributes to Default. The presence of an (All) level in an attribute hierarchy depends on the IsAggregatable property setting for the attribute and the presence of an (All) level in a user-defined hierarchy depends on the IsAggregatable property of the attribute at the top-most level of user-defined hierarchy. If the IsAggregatable property is set to True, an (All) level will exist. A hierarchy has no (All) level if the IsAggregatable property is set to False. **QUESTION 322** You are a database developer and you have about two years experience in creating business Intelligence (BI) by using SQL Server 2008. Now you are employed in a company named NaproStar which uses SQL Server 2008. You work as the technical support. Now you receive an e-mail from your company CIO, in the e-mail, the CIO assigns a task to you. You use SQL Server 2008 Reporting Services (SSRS) to create a solution. There is a table in the solution. The table is named FinishedBills. The table contains two columns respectively named BillKey and ClientKey. You have to create a measure, the number of customers who have placed bills is returned by the measure. So what action should you perform? A. The Usage property should be set to Count of rows and the Source Column property should be set to OrderKey. B. The Usage property should be set to Count of rows and the Source Column property should be set to CustomerKey. C. The Usage property should be set to Distinct count and the Source Column property should be set to OrderKey. D. The Usage property should be set to Distinct count and the Source Column property should be set to CustomerKey Answer: D **QUESTION 323** You are a database developer and you have about two years experience in creating business Intelligence (BI) by using SQL Server 2008. Now you are employed in a

company named NaproStar which uses SQL Server 2008. You work as the technical support. Now you receive an e-mail from your company CIO, in the e-mail, the CIO assigns a task to you. You use SQL Server 2008 Reporting Services (SSRS) to create a project. Data from a SQL Server 2005 Analysis Services database will be displayed by the report. According to the requirement of the company CIO, you must make sure that member properties and extended properties are displayed by the report. So what should you do? A. The SQL Server Analysis Services data source should be used. B. The SQL Server data source should be used. C. The OLE DB for SQL Server data source should be used. D. The OLE DB for the Analysis Services 8.0 data source should be used  
Answer: A QUESTION 324 You install and configure SQL Server 2008 Reporting Services (SSRS) instance. The users of the report server plan to deliver reports through e-mail messages. You need to configure the report server for e-mail message delivery by using a remote SMTP server. What should you do? A. Modify the rssrvpolicy.config file. B. Modify the RSReportServer.config file. C. Modify the Web.config file. D. Modify the Global.asax file. Answer: B QUESTION 325 You implement a SQL Server 2008 Integration Services (SSIS) package. The package contains the following components: A Foreach Loop container for the Collection property as shown in the following exhibit.



A Foreach Loop container for the Variable Mappings property as shown in the following exhibit.



A String variable named FileName. A String variable named DirectoryPath. You need to update the package so that the DirectoryPath variable returns the directory path for the file path stored in the FileName variable. Which two actions should you perform? (Each correct answer presents part of the solution. Choose two.) A. Set the RaiseChangedEvent property of the User::FileName variable to True. B. Set the EvaluateAsExpression property of the User::DirectoryPath variable to True. C. Add a Script task to the OnPostExecute event handler of the Foreach Loop container. D. Set the Expression property of the User::DirectoryPath variable to the following expression. SUBSTRING( @[User::FileName], 1, LEN( @[User::FileName] ) ) -

FINDSTRING( REVERSE( @[User::FileName] ), "\", 1 ))E. Set the Expression property of the User::FileName variable to the following expression. SUBSTRING( @[User::FileName], 1, LEN( @[User::FileName] ) - FINDSTRING( REVERSE( @[User::FileName] ), "\", 1 )) Answer: BD QUESTION 326You maintain an instance of SQL Server 2008 Reporting Services (SSRS). The instance contains several reports.You deploy a report project on the instance by using the Business Intelligence Development Studio (BIDS). You discover that the production data sources on the instance are replaced by the test data sources of the report project.You need to ensure that when the report project is deployed in future, the existing reports are unaffected.What should you do? A. Configure the OverwriteDataSources property.B. Configure the TargetServerURL property.C. Configure the TargetDataSourceFolder property.D. Configure the TargetReportFolder property. Answer: A QUESTION 327You are designing a SQL Server 2008 Integration Services (SSIS) package. The package includes a Data Flow task.You need to modify the package to write all rows that generate errors to a text file.Which two actions should you perform? (Each correct answer presents part of the solution. Choose two.) A. Use the SSIS log provider for the SQL Profiler.B. Use the SSIS log provider for the text file.C. Use a Flat File Destination component.D. Use a Raw File Destination component.E. Add an Error output to the Data Flow component Answer: CE QUESTION 328You design a SQL Server 2008 Integration Services (SSIS) package that contains several data flows.You need to monitor the data that passes through each path in the data flow by using the Business Intelligence Development Studio. You also need to ensure that data flow logic is retained.What should you do? A. Use the Data Viewer tool.B. Use the Data Profiling task.C. Use the Audit transformation.D. Use breakpoints in the Script component. Answer: A QUESTION 329You are designing a SQL Server 2008 Integration Services (SSIS) package.The package includes a Data Flow task that copies several million rows. The data flow requires a match against a reference table that contains 10,000 rows. Each row in the reference table will be used during the data flow.You need to ensure that the data flow executes in the minimum amount of time. Which data flow component should you select? A. a Fuzzy Lookup transformationB. a Lookup transformation along with the Full cache optionC. a Lookup transformation along with the No cache optionD. a Lookup transformation along with the Partial cache option Answer: B QUESTION 330You maintain a SQL Server 2008 Analysis Services (SSAS) database.When you process the Analysis Services database, you discover that a Duplicate Key error occurs.You need to modify the ErrorConfiguration property so that the error condition is reported and processing continues.Which object should you modify? A. The cubeB. The partitionC. The dimensionD. The measure group Answer: C Braindump2go New Released 70-448 Dumps PDF are Now For Free Download, 352 Latest Questions, Download It Right Now and Pass Your Exam 100%:

**Compared Before Buying Microsoft 70-448**

Pass4sure	Braindump2go
	100% Pass OR Money Back
332 Q&As - Practice	352 Q&As – Real Questions
\$125.99	\$99.99
No Discount	Coupon Code: BDNT2014

<http://www.braindump2go.com/70-448.html>