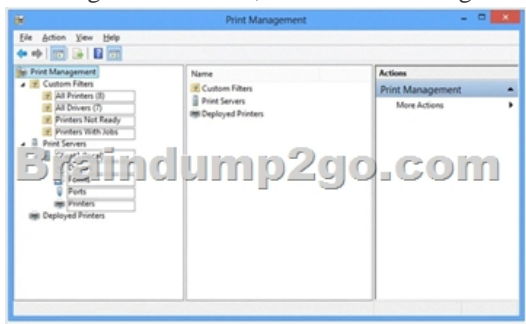
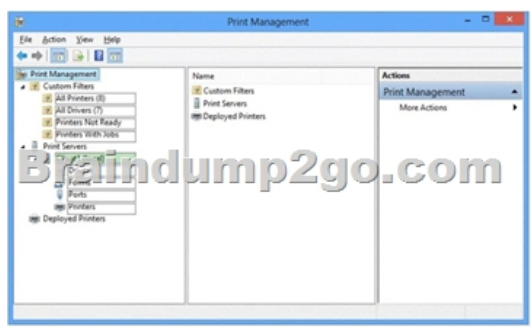


(2016-Jun-Updated)Offer 84q 70-697 Braindumps from Braindump2go for Free Downloading(NQ41-NQ50)

2016 June Microsoft Official: 70-697 PDF Dumps & 70-697 VCE Dumps with New 70-697 Exam Questions Released Today by Braindump2go.com! 100% Exam Pass Guaranteed!
NEW QUESTION 41 - NEW QUESTION 50:
QUESTION 41 You administer Windows 10 Enterprise desktop computers that are members of an Active Directory domain. You want to create an archived copy of user profiles that are stored on the desktops. You create a standard domain user account to run a backup task. You need to grant the backup task user account access to the user profiles. What should you do?
A. Add the backup task account to the Remote Management Users group on a domain controller.
B. Add the backup task account to the Backup Operators group on every computer.
C. Add the backup task account to the Backup Operators group on a domain controller.
D. Set the backup task account as NTFS owner on all the profiles.
Answer: B
Explanation: The Local Backup Operators group can back up and restore files on a computer, regardless of any permission that protect those files.
Incorrect Answers:
A: The Remote Management Users group is normally used to allow users to manage servers via the Server Manager console.
C: Members of the Domain Backup Operators group will be able to back up all files and folders on all computers in the domain, not just the Windows 10 Enterprise desktop computers.
D: Setting the backup task account as NTFS owner on all the profiles will allow the backup task account to control how permissions are set on the NTFS volumes for those user profiles and to whom permissions are granted. You only need to grant the backup task user account access to the user profiles, not control over its permissions.
<https://technet.microsoft.com/en-us/library/cc771990.aspx>
<https://technet.microsoft.com/en-us/library/dn579255.aspx>
[https://technet.microsoft.com/en-us/library/cc779180\(v=ws.10\).aspx](https://technet.microsoft.com/en-us/library/cc779180(v=ws.10).aspx)
QUESTION 42 Hotspot Question You administer Windows 10 Enterprise computers in your company network, including a computer named Wst1. Wst1 is configured with multiple shared printer queues. Wst1 indicates hardware errors. You decide to migrate the printer queues from Wst1 to a new computer named Client1. You export the printers on Wst1 to a file. You need to import printers from the file to Client1. From the Print Management console, which Print Management node should you select? To answer, select the appropriate node in the answer area.



Answer:



QUESTION 43 You are a system administrator for a department that has Windows 10 Enterprise computers in a domain configuration. You deploy an application to all computers in the domain. You need to use group policy to restrict certain groups from running the application. What should you do?
A. Set up DirectAccess.
B. Configure AppLocker.
C. Disable BitLocker.
D. Run the User State Management Tool.
Answer: B
Explanation: AppLocker is a feature in Windows Server 2012, Windows Server 2008 R2, Windows 8, and Windows 7 that advances the functionality of the Software Restriction Policies feature. AppLocker contains new capabilities and extensions that reduce administrative overhead and help administrators control how users can access and use files, such as executable files, scripts, Windows Installer files, and DLLs. AppLocker rules can be applied to security groups. We can use a group policy to apply AppLocker rules to the security groups to prevent them from running the application.
Incorrect Answers:

A: DirectAccess is a remote access solution that enables remote access to company resources. It cannot be used to prevent members of security groups from running an application. C: BitLocker is used to encrypt data. It cannot be used to prevent members of security groups from running an application. D: The User State Management Tool is used for managing user profiles. It cannot be used to prevent members of security groups from running an application.

[https://technet.microsoft.com/en-us/library/ee619725\(v=ws.10\).aspx#BKMK_WhatRuleConditions](https://technet.microsoft.com/en-us/library/ee619725(v=ws.10).aspx#BKMK_WhatRuleConditions) QUESTION 44 You support desktop computers and tablets that run Windows 8 Enterprise. All of the computers are able to connect to your company network from the Internet by using DirectAccess. Your company wants to deploy a new application to the tablets. The deployment solution must meet the following requirements:- The application is able to access files stored on an internal solid-state drive (SSD) on the tablets.- The application is isolated from other applications.- The application uses the least amount of disk space on the tablet. You need to deploy the new application to the tablets. What should you do? A. Deploy the application as an Application Virtualization (App-V) package. Install the App-V 4.6 client on the tablets. B. Deploy the application as a published application on the Remote Desktop server. Create a Remote Desktop connection on the tablets. C. Install the application on a local drive on the tablets. D. Install the application in a Windows To Go workspace. E. Install Hyper-V on tablets. Install the application on a virtual machine. F. Publish the application to Windows Store. G. Install the application within a separate Windows 8 installation in a virtual hard disk (VHD) file. Configure the tablets with dual boot. H. Install the application within a separate Windows 8 installation in a VHDX file. Configure tablets with dual boot. Answer: B Explanation: Deploying the application as a published application on the Remote Desktop server will use no disk space on the tablets. Users will be able to access the application by using Remote Desktop Connections. This will also ensure that the application is isolated from other applications on the tablets. We can use Remote Desktop Connection 'redirection' to ensure that the application is able to access files stored on an internal solid-state drive (SSD) on the tablets. Redirection enables access to local resources such as drives, printers etc. in a Remote Desktop Connection. Incorrect Answers: A: This solution does not minimize the disk space used on the tablets as the application will be downloaded to the tablets. C: This solution does not minimize the disk space used on the tablets as the application will be installed on the tablets. This solution also does not provide the required isolation from other applications. D: This solution does not provide the required access to files stored on the internal solid-state drive (SSD) on the tablets. E: This solution does not minimize the disk space used on the tablets as disk space will be required for the virtual machine. This solution also does not provide the required access to files stored on the internal solid-state drive (SSD) on the tablets. F: This solution does not minimize the disk space used on the tablets as the application will need to be downloaded and installed on the tablets. G: This solution does not minimize the disk space used on the tablets as disk space will be required for the VHD. H: This solution does not minimize the disk space used on the tablets as disk space will be required for the VHDX. <https://azure.microsoft.com/en-gb/documentation/articles/remotapp-redirection/> QUESTION 45

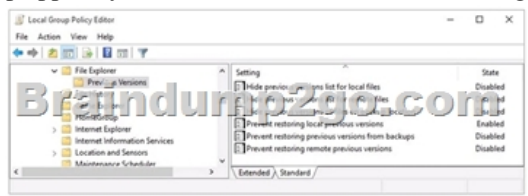
You have a computer named Computer1 that runs Windows 10 Enterprise. Computer1 is a member of an Active Directory domain named contoso.com. You have a line-of-business universal app named App1. App1 is developed internally. You need to ensure that you can run App1 on Computer1. The solution must meet the following requirements:- Minimize costs to deploy the app.- Minimize the attack surface on Computer1. What should you do? A. Have App1 certified by the Windows Store. B. Sign App1 with a certificate issued by a third-party certificate authority. C. From the Update & Security setting on Computer1, enable the Sideload apps setting. D. Run the Add-AppxProvisionedPackage cmdlet. Answer: C Explanation: To install the application, you need to 'Sideload' it. First you need to enable the Sideload apps setting. LOB Windows Store apps that are not signed by the Windows Store can be sideloaded or added to a PC in the enterprise through scripts at runtime on a per-user basis. They can also be provisioned in an image by the enterprise so that the app is registered to each new user profile that's created on the PC. The requirements to sideload the app per-user or in the image are the same, but the Windows PowerShell cmdlets you use to add, get, and remove the apps are different. Before you can sideload LOB Windows Store apps that are not signed by the Windows Store, you will need to configure the PC. Incorrect Answers: A: We only need to install the app on one computer so it is not necessary to have App1 certified by the Windows Store. This solution does not minimize costs. B: This solution does not minimize costs as you would have to pay for a third party certificate. D: The Add-AppxProvisionedPackage cmdlet adds an app package (.appx) that will install for each new user to a Windows image. However, to install an unsigned app, we need to enable sideloading first. Furthermore, the question states that 'you' need to ensure that you can run App1 on Computer1. The Add-AppxProvisionedPackage cmdlet would make the app available to all users, not just you. <https://msdn.microsoft.com/en-us/library/hh454036.aspx> QUESTION 46

You have a computer named Computer1 that runs Windows 10 Enterprise. You plan to install the most recent updates to Computer1. You need to ensure that you can revert to the current state of Computer1 in the event that the computer becomes unresponsive after the update. What should you include in your solution? A. The Reset this PC option from the Recovery section of the Settings app. B. The Sync your settings options from the Accounts section of the Settings app. C. The Backup and Restore (Windows 7) control panel item. D. The Refresh

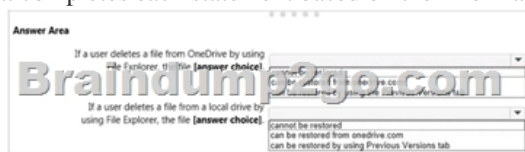
your PC option from the PC Settings Answer: CExplanation:The question states that you need to ensure that you can revert to the current state of Computer1. The question does not specify what exactly the current state is in terms of software configuration but it would be safe to assume that Computer1 has Windows Store Apps installed, desktop applications installed and some previous Windows Updates installed.The only way to recover the computer to its `current' state is to perform a full backup of the computer before updating it. Then if the computer becomes unresponsive after the update, we can simply restore the backup to return the computer to its state at the time of the backup.Incorrect Answers:A: When you Reset your PC, all your applications and data will be removed. It is like doing a complete Windows reinstall and formatting your hard drive.B: The Sync your settings options are used for syncing settings with a Microsoft account. This does not return the computer to its current state.D: When you Refresh your PC, your data, Windows Store Apps and application settings will be preserved.However, all your desktops applications and any existing Windows Updates will be removed. This does not return the computer to its current state.

<http://www.howtogeek.com/220986/how-to-use-all-of-windows-10%E2%80%99s-backup-and-recovery-tools/> QUESTION 47You administer a Windows 10 Enterprise computer. The computer has File History turned on, and system protection turned on for drive C.You accidentally delete a folder named LibrariesCustomers by using the Shift+Delete keyboard shortcut.You need to restore the most recent version of the folder to its original location.Which approach should you use to restore the folder? A. Recycle BinB. the latest restore pointC. File HistoryD. a manually selected restore point Answer: CExplanation:File History is similar to Previous Versions in previous versions of Windows. It takes regular backups of your data and saves them to a separate disk volume or external drive. When File History is enabled, it backs up all the system libraries and your custom libraries by default.To restore a deleted folder, you can browse to the parent folder or library and select Restore Previous Versions. The Previous Versions tab will list the previous versions that can be restored to its original location or restored to an alternative location.Incorrect Answers:A: The question states that you deleted the folder by using the Shift+Delete keyboard shortcut. The Shift +Delete keyboard shortcut bypasses the Recycle Bin; the file or folder is permanently deleted without moving it to the Recycle Bin.B: System Restore points do not back up user data. They are used for restoring the system and applications to a previous state. You cannot use a System Restore point to recover a deleted folder.D: System Restore points do not back up user data. They are used for restoring the system and applications to a previous state. You cannot use a System Restore point to recover a deleted folder.

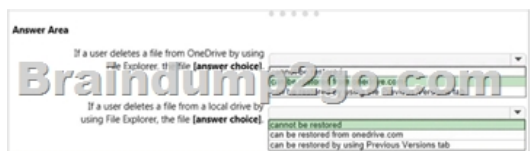
<https://www.winhelp.us/file-history-in-windows-8.html> QUESTION 48Hotspot QuestionYou have a standalone computer that runs Windows 10 Enterprise. The computer is configured to automatically back up files by using File History. The user of the computer uses the OneDrive desktop app to sync files.The Previous Versions settings from the local group policy of the computer are shown in the following graphic.



Use the drop-down menus to select the answer choice that completes each statement based on the information presented in the graphic.NOTE: Each correct selection is worth one point.



Answer:



Explanation:When a file is deleted from the local OneDrive folder with File Explorer, the deletion is replicated to Onedrive.com and the file is moved to the OneDrive recycle bin. The deleted file can therefore be recovered from the Recycle Bin on Onedrive.com.If a user deletes a file from a local drive by using File Explorer, the file cannot be restored. If the file is not in the OneDrive folder, it will not be a file that is synced to onedrive.com. We could use Previous Versions to restore the file but this is prevented by the Group Policy settings. The "Prevent restoring local previous versions" -Enabled group policy setting would prevent

the previous version from being restored.<http://www.groovypost.com/howto/restore-deleted-files-local-onedrive-folder/> QUESTION 49 You have a Windows 10 Enterprise computer named Computer1. Computer1 has File History enabled. You create a folder named Folder1 in the root of the C: drive. You need to ensure that Folder1 is protected by File History. What are two possible ways to achieve the goal? Each correct answer presents a complete solution. A. From File Explorer, include Folder1 in an existing library. B. Modify the Advanced settings from the File History Control Panel item. C. From the Settings app, modify the Backup options. D. From File Explorer, modify the system attribute of Folder1. Answer: AC Explanation: By default, File History backs up all libraries. We can therefore ensure that Folder1 is protected by File History by adding the folder to a library. The second method of ensuring that Folder1 is protected by File History is to add the folder location to File History. You do this by modifying the Backup options, not the File History Control Panel item as you might expect. In the Settings app, select Update & Security then Backup. Under the Back up using File History heading, select the Add a drive option. Incorrect Answers: B: The Advanced settings from the File History Control Panel item are for configuring settings such as backup frequency, the size of the offline cache and the amount of time that previous versions should be kept for. This is not where you can configure Folder1 to be protected by File History. D: You cannot configure Folder1 to be protected by File History by modifying the system attribute of the folder. System files are not automatically protected by File History. <https://www.winhelp.us/file-history-in-windows-8.html> QUESTION 50 A company has 100 client computers that run Windows 10 Enterprise. A new company policy requires that all client computers have static IPv6 addresses. You need to assign static IPv6 addresses to the client computers. Which Network Shell (netsh) command should you run? A. add address B. set interface C. set global D. set address Answer: A Explanation: The add address Network Shell (netsh) command adds an IPv6 address to a specified interface. Incorrect Answers: B: The set interface Network Shell (netsh) command modifies interface configuration parameters. C: The set global Network Shell (netsh) command modifies global configuration parameters. D: The set address Network Shell (netsh) command modifies an IPv6 address on a specified interface. [https://technet.microsoft.com/en-gb/library/cc740203\(v=ws.10\).aspx#BKMK_3](https://technet.microsoft.com/en-gb/library/cc740203(v=ws.10).aspx#BKMK_3) 2016 Valid Microsoft 70-697 Study Materials: 1. | Latest 70-697 PDF & 70-697 VCE 84Q&As from Braindump2go: <http://www.braindump2go.com/70-697.html> [100% [Exam Pass Guaranteed!]] 2. | New 70-697 Exam Questions and Answers - Google Drive: <https://drive.google.com/folderview?id=0B75b5xYLjSSNMHZoZGJxbElJbFU&usp=sharing>