

[2016-Sep.-Latest100% Real Microsoft 70-411 PDF & 70-411 VCE 445q&as-Braindump2go[NQ37-NQ42

2016/09 New Microsoft 70-411: Administering Windows Server 2012 R2 Exam Questions Released Today!Free Instant Download 70-411 Exam Dumps (PDF & VCE) 445Q&As from Braindump2go.com Today! 100% Real Exam Questions! 100% Exam Pass Guaranteed! 1.|2016/09 Latest 70-411 Exam Dumps (PDF & VCE) 445Q&As Download:

<http://www.braindump2go.com/70-411.html> 2.|2016/09 Latest 70-411 Exam Questions & Answers:

<https://drive.google.com/folderview?id=0B75b5xYLjSSNfnNyWDFTYllvTTkteG0waVJYSFdoaDVWZTBSamh6Q0xiaUJmNEk5cUJSbFU&usp=sharing> QUESTION 37Your network contains an Active Directory domain named contoso.com. The domain

contains a server named Server1 that runs Windows Server 2012 P.2. Server1 has the Network Policy and Access Services server role installed.Your company's security policy requires that certificate-based authentication must be used by some network services.

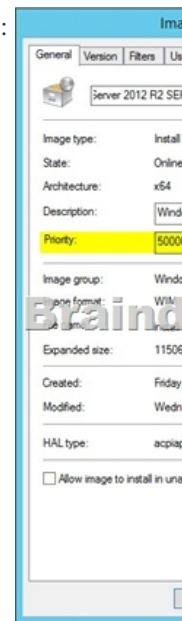
You need to identify which Network Policy Server (NPS) authentication methods comply with the security policy.Which two authentication methods should you identify? (Each correct answer presents part of the solution. Choose two.) A. MS-CHAPB. PEAP-MS-CHAP v2C. ChapD. EAP-TLSE. MS-CHAP v2 Answer: BExplanation:PEAP is similar in design to EAP-TTLS,

requiring only a server-side PKI certificate to create a secure TLS tunnel to protect user authentication, and uses server- side public key certificates to authenticate the server. When you use EAP with a strong EAP type, such as TLS with smart cards or TLS with

certificates, both the client and the server use certificates to verify their identities to each other. QUESTION 38You have a server named Server1 that runs Windows Server 2012 R2. Server1 has the Windows Deployment Services server role installed.Server1

contains two boot images and four install images.You need to ensure that when a computer starts from PXE, the available operating system images appear in a specific order.What should you do? A. Modify the properties of the boot images.B. Create a new

image group.C. Modify the properties of the install images.D. Modify the PXE Response Policy. Answer: CExplanation:



installation images are the operating system images that you deploy to the client computer. Start images are the images with which you start a client computer to perform an operating system installation. Boot images contain Windows PE and the Windows Deployment Services client. The order of the display of images can about the value of priority on the register general are controlled in the properties of the images: QUESTION 39Your network contains an Active Directory domain named contoso.com. Domain controllers run either Windows Server 2008, Windows Server 2008 R2, or Windows Server 2012 R2. You have a Password Settings object (PSOs) named PSO1. You need to view the settings of PSO1.Which tool should you use? A.

Get-ADFineGrainedPasswordPolicyB. Get-ADAccountResultantPasswordReplicationPolicyC.

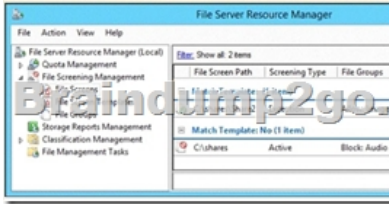
Get-ADDomainControllerPasswordReplicationPolicyD. Get-ADDefaultDomainPasswordPolicy Answer: AExplanation:A. Gets

one or more Active Directory fine grained password policies. B. Gets the resultant password replication policy for an Active Directory account. C. Gets the members of the allowed list or denied list of a read-only domain controller's password replication

policyD. Gets the default password policy for an Active Directory domain. <http://technet.microsoft.com/en-us/library/ee617231.aspx>

<http://technet.microsoft.com/en-us/library/ee617227.aspx> <http://technet.microsoft.com/en-us/library/ee617207.aspx>

<http://technet.microsoft.com/en-us/library/ee617244.aspx> QUESTION 40 You have a failover cluster that contains five nodes. All of the nodes run Windows Server 2012 R2. All of the nodes have BitLocker Drive Encryption (BitLocker) enabled. You enable BitLocker on a Cluster Shared Volume (CSV). You need to ensure that all of the cluster nodes can access the CSV. Which cmdlet should you run next? A. Unblock-Tpm B. Add-BitLockerKeyProtector C. Remove-BitLockerKeyProtector D. Enable-BitLockerAutoUnlock Answer: B Explanation: Add an Active Directory Security Identifier (SID) to the CSV disk using the Cluster Name Object (CNO) The Active Directory protector is a domain security identifier (SID) based protector for protecting clustered volumes held within the Active Directory infrastructure. It can be bound to a user account, machine account or group. When an unlock request is made for a protected volume, the BitLocker service interrupts the request and uses the BitLocker protect/unprotect APIs to unlock or deny the request. For the cluster service to selfmanage BitLocker enabled disk volumes, an administrator must add the Cluster Name Object (CNO), which is the Active Directory identity associated with the Cluster Network name, as a BitLocker protector to the target disk volumes. Add-BitLockerKeyProtector <drive letter or CSV mount point> -ADAccountOrGroupProtector -ADAccountOrGroup \$cno QUESTION 41 Hotspot Question You have a file server named Server1 that runs Windows Server 2012 R2. A user named User1 is assigned the modify NTFS permission to a folder named C:\shares and all of the subfolders of C:\shares. On Server1, you open File Server Resource Manager as shown in the exhibit. (Click the Exhibit button.)



To answer, complete each statement according to the information presented in the exhibit. Each correct selection is worth one point.

Answer Area

User1 can copy a file named ... to C:\shares.

User1 cannot copy a file named ... to a folder named C:\shares\share2.

File1.gif
File2.bmp
File3.jpg.zip
File4.mp3

Answer: Answer Area

User1 can copy a file named ... to C:\shares.

User1 cannot copy a file named ... to a folder named C:\shares\share2.

File1.gif
File2.bmp
File3.jpg.zip
File4.mp3

Explanation: You can create file screens to prevent files that belong to particular file groups are saved on a volume or in a folder structure. A file screen affects all folders in the specified path. For example, you can create a file screen to prevent users from storing audio and video files in their personal folders on the server. You can also Resource Manager File Server configure that it sends e-mail or other notifications when a certain file screening event occurs. A file screen can be active or passive: Active checks prevent users from saving unauthorized file types on the server. In passive checks users are monitored, save certain file types, and configured notifications generated, users are not prevented from saving the files. A file screen prevents users and applications not from accessing files that were saved in a directory before the file screen was created - regardless of whether the files belong to the blocked file groups or not. In the folder C: Data1 can no audio and video files and any image files are stored. Because except for image files to the directory C: Data1 Folder1 image files any audio and video files can be stored in this folder while but. QUESTION 42 Your network contains an Active Directory domain named contoso.com. The domain contains 30 user accounts that are used for network administration. The user accounts are members of a domain global group named Group1. You identify the security requirements for the 30 user accounts as shown in the following table.

Security setting	Requirement
Minimum password length	20
Account lockout threshold	Enabled
User cannot change password	Enabled
Password never expires	Enabled

You need to identify which settings must be implemented by using a Password Settings object (PSO) and which settings must be implemented by modifying the properties of the user accounts.What should you identify?

Security setting	Configured by using
Minimum password length	<div><div></div><div>PSO</div><div>User account properties</div></div>
Account is sensitive and cannot be delegated	<div><div></div><div>PSO</div><div>User account properties</div></div>
User cannot change password	<div><div></div><div>PSO</div><div>User account properties</div></div>
Enforce password history	<div><div></div><div>PSO</div><div>User account properties</div></div>

Answer:

Security setting	Configured by using
Minimum password length	<div><div></div><div>PSO</div><div>User account properties</div></div>
Account is sensitive and cannot be delegated	<div><div></div><div>PSO</div><div>User account properties</div></div>
User cannot change password	<div><div></div><div>PSO</div><div>User account properties</div></div>
Enforce password history	<div><div></div><div>PSO</div><div>User account properties</div></div>

Explanation:With the settings Account is sensitive and can not be delegated, and users can not change password is account options on the Register account can be activated in the properties of user accounts. In the settings Minimum password length and enforce password history is it to password policies that can be configured as part of a PSO object. !!!RECOMMEND!!! 1.|2016/09 Latest 70-411 Exam Dumps (PDF & VCE) 445Q&As Download:<http://www.braindump2go.com/70-411.html> 2.|2016/09 Latest 70-411 Exam Questions & Answers:
<https://drive.google.com/folderview?id=0B75b5xYLjSSNfnNyWDFTYllvTTkteG0waVJYSFdoaDVWZTBSamh6Q0xiaUJmNEk5cUJSbFU&usp=sharing>