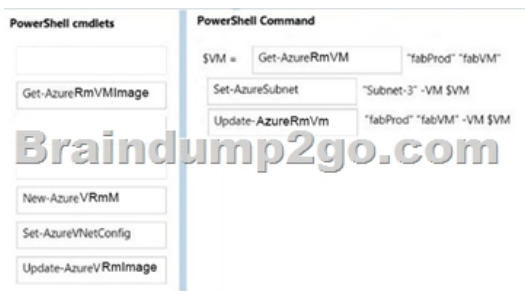


## (2017-March-New)Free Microsoft 218q 70-533 Exam Questions Braindump2go Offers(198-203)

(2017 March New) 70-533 Exam Dumps (PDF and VCE) Updated by [www.Braindump2go.com](#) **Today!**1.[2017 Version 70-533 PDF and VCE Dumps 218Q&As Download:<http://www.braindump2go.com/70-533.html> 2.[2017 Version 70-533 Questions & Answers Download:<https://1drv.ms/f/s!AvI7wzKf6QBjgxoFreYx3ZmYPzgH> QUESTION 198You are deploying an ASP.NET application to an Azure virtual machine (VM). The application throws an exception when invalid data is entered. When exceptions occur, an administrator must log on to the system to remove the bad data, and then restart the application.You need to gather information about application crashes.What should you do? A. View the IIS logs.B. View the Windows event system logs.C. View the Windows event application logs.D. Collect network and web metrics. Answer: C QUESTION 199Drag and Drop QuestionYou have an Azure Virtual Network named fabVNet with three subnets named Subnet-1, Subnet-2 and Subnet-3. You have a virtual machine (VM) named fabVM running in the fabProd service.You need to modify fabVM to be deployed into Subnet-3. You want to achieve this goal by using the least amount of time and while causing the least amount of disruption to the existing deployment.What should you do? To answer, drag the appropriate Power Shell cmdlet to the correct location in the Power Shell command. Each cmdlet may be used once, more than once, or not at all. You may need to drag the split bar between panes or scroll to view content.



Answer:



QUESTION 200You have an application that uses SQL Server in an Azure virtual machine (VM) to store data.If the VM running the primary instance of SQL Server fails:- The application must automatically begin using a backup copy of the SQL Server data.- The recovery solution must guarantee that no data is lost.If the primary datacenter fails:- There must be a way to manually switch to a secondary data center.- Some data loss is acceptable.You create an active datacenter named AD1 and a passive datacenter named PD1.AD1 has two SQL Server instances. PD1 has one SQL Server instance.You need to implement the replication and failover solutions for the application.What should you do? A. In AD1, configure asynchronous replication and automatic failover. In PD1, configure synchronous replication and manual failover from AD1.B. In AD1, configure synchronous replication and automatic failover. In PD1, configure synchronous replication and manual failover from AD1.C. In AD1, configure synchronous replication and manual failover. In PD1, configure asynchronous replication and manual failover from AD1.D. In AD1, configure asynchronous replication and manual failover. In PD1, configure asynchronous replication and manual failover from AD1. Answer: B QUESTION 201You manage Azure Web Apps for a company. You migrate an on-premises web app to Azure. You plan to update the Azure Web App by modifying the connection string and updating the files that have changed since previous revision.The deployment process must use Secure Socket Layer (SSL) and occur during off-peak hours as an automated batch process.You need to update the Azure Web App.What should you do? A. Configure a File Transfer Protocol (FTP) transfer script.B. Deploy the project from Microsoft Visual Studio.C. Run theNew-AzureRMWebAppAzure PowerShell cmdlet.D. Run theNew-AzureRmResourceGroupDeploymentAzure PowerShell cmdlet. Answer: D QUESTION 202You manage an on-premises monitoring platform.You plan to deploy virtual machines (VMs) in Azure.You must use existing on-premises monitoring solutions

for Azure VMs. You must maximize security for any communication between Azure and the on-premises environment. You need to ensure that Azure alerts are sent to the on-premises solution. What should you do? A. Enable App Service Authentication for the VMs. B. Configure a basic authorization webhook. C. Deploy an HDInsight cluster. D. Configure a token-based authorization webhook. Answer: D

QUESTION 203 You administer an Azure subscription for your company. You have an application that updates text files frequently. The text files will not exceed 20 gigabytes (GB) in size. Each write operation must not exceed 4 megabytes (MB). You need to allocate storage in Azure for the application. Which three storage types will achieve the goal? Each correct answer presents a complete solution. A. page blob B. queue C. append blob D. block blob E. file share Answer: ACD

!!!RECOMMEND!!! 1. |2017 Version 70-533 PDF and VCE Dumps 218Q&As Download:  
<http://www.braindump2go.com/70-533.html> 2. |2017 Version 70-533 Study Guide Video: YouTube Video:  
[YouTube.com/watch?v=PEu56PWs0GQ](https://www.youtube.com/watch?v=PEu56PWs0GQ)