

## [2020-March-New100% Exam Pass-300-430 Dumps PDF Free from Braindump2go

March/2020 New 300-430 Exam Dumps with PDF and VCE Free Updated Today! Following are some new 300-430 Exam Questions.

**New Question** For security purposes, an engineer enables CPU ACL and chooses an ACL on the Security > Access Control Lists > CPU Access Control Lists menu. Which kind of traffic does this change apply to, as soon as the change is made? A. wireless traffic only B. wired traffic only C. VPN traffic D. wireless and wired traffic **Answer: A**

**New Question** An engineer must implement Cisco Identity-Based Networking Services at a remote site using ISE to dynamically assign groups of users to specific IP subnets. If the subnet assigned to a client is available at the remote site, then traffic must be offloaded locally, and subnets are unavailable at the remote site must be tunneled back to the WLC. Which feature meets these requirements? A. learn client IP address B. FlexConnect local authentication C. VLAN-based central switching D. central DHCP processing **Answer: C**

**New Question** Which two events are outcomes of a successful RF jamming attack? (Choose two.) A. disruption of WLAN services B. unauthentication association C. deauthentication broadcast D. deauthentication multicast E. physical damage to AP hardware **Answer: AE**

Explanation: WLAN reliability and efficiency depend on the quality of the radio frequency (RF) media. Each RF is susceptible to RF noise impact. An attacker using this WLAN vulnerability can perform two types of DoS attacks:

**Disrupt WLAN service** - At the 2.4 GHz unlicensed spectrum, the attack may be unintentional. A cordless phone, Bluetooth devices, microwave, wireless surveillance video camera, or baby monitor can all emit RF energy to disrupt WLAN service. Malicious attacks can manipulate the RF power at 2.4 GHz or 5 GHz spectrum with a high-gain directional antenna to amplify the attack impact from a distance. With free-space and indoor attenuation, a 1-kW jammer 300 feet away from a building can jam 50 to 100 feet into the office area. The same 1-kW jammer located inside a building can jam 180 feet into the office area. During the attack, WLAN devices in the target area are out of wireless service.

**Physically damage AP hardware** - An attacker using a high-output transmitter with directional high gain antenna 30 yards and 100 watts can jam the antenna of the access point putting the access point out of service.

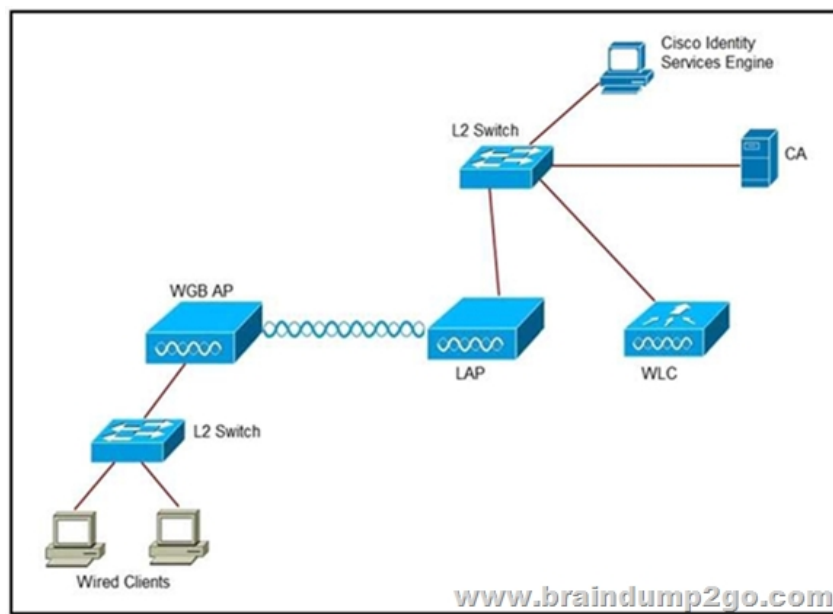
[www.braindump2go.com](http://www.braindump2go.com)

**New Question** Which two steps are needed to complete integration of the MSE to Cisco Prime Infrastructure and be able to track the location of clients/rogues on maps? (Choose two.) A. Synchronize access points with the MSE. B. Add the MSE to Cisco Prime Infrastructure using the CLI credentials. C. Add the MSE to Cisco Prime Infrastructure using the Cisco Prime Infrastructure communication credentials configured during set up. D. Apply a valid license for Wireless Intrusion Prevention System. E. Apply a valid license for location tracking. **Answer: DE**

**New Question** An engineer is performing a Cisco Hyperlocation accuracy test and executes the cmxloc start command on Cisco CMX. Which two parameters are relevant? (Choose two.) A. X, Y real location B. client description C. AP name D. client MAC address E. WLC IP address **Answer: AD**

**New Question** A network engineer observes a spike in controller CPU overhead and overall network utilization after multicast is enabled on a controller with 500 APs. Which feature connects the issue? A. controller IGMP snooping B. multicast AP multicast mode C. broadcast forwarding D. unicast AP multicast mode **Answer: B**

**New Question** Refer to the exhibit. An engineer must connect a fork lift via a WGB to a wireless network and must authenticate the WGB certificate against the RADIUS server. Which three steps are required for this configuration? (Choose three.)



A. Configure the certificate, WLAN, and radio interface on WGB. B. Configure the certificate on the WLC. C. Configure WLAN to authenticate using ISE. D. Configure the access point with the root certificate from ISE. E. Configure WGB as a

network device in ISE. F. Configure a policy on ISE to allow devices to connect that validate the certificate.**Answer: ACF**

**New Question** On a branch office deployment, it has been noted that if the FlexConnect AP is in standalone mode and loses connection to the WLC, all clients are disconnected, and the SSID is no longer advertised. Considering that FlexConnect local switching is enabled, which setting is causing this behavior? A. ISE NAC is enabled B. 802.11r Fast Transition is enabled C. Client Exclusion is enabled D. FlexConnect Local Auth is disabled**Answer: D**

**New Question** A user is trying to connect to a wireless network that is configured for WPA2-Enterprise security using a corporate laptop. The CA certificate for the authentication server has been installed on the Trusted Root Certification Authorities store on the laptop. The user has been prompted to enter the credentials multiple times, but the authentication has not succeeded. What is causing the issue? A. The user Active Directory account is locked out after several failed attempts. B. There is an IEEE invalid 802.1X authentication policy on the authentication server. C. There is an invalid 802.1X authentication policy on the authenticator. D. The laptop has not received a valid IP address from the wireless controller. **Answer: C**

**New Question** An engineer must use Cisco AVC on a Cisco WLC to prioritize Cisco IP cameras that use the wireless network. Which element do you configure in a rule? A. WMM required B. mark C. permit-ACL D. rate-limit **Answer: B**

**New Question** What is the maximum time range that can be viewed on the Cisco DNA Center issues and alarms page? A. 3 days B. 3 hours C. 24 hours D. 7 days **Answer: C**

**New Question** Where is a Cisco OEAP enabled on a Cisco Catalyst 9800 Series Wireless Controller? A. RF Profile B. AP Join Profile C. Flex Profile D. Policy Profile **Answer: C**

**New Question** Which two protocols are used to communicate between the Cisco MSE and the Cisco Prime Infrastructure network management software? (Choose two.) A. SOAP B. NMSP C. HTTPS D. SSH E. Telnet **Answer: B,C**

**New Question** A network engineer observes a spike in controller CPU overhead and overall network utilization after multicast is enabled on a controller with 500 APs. Which feature connects the issue? A. controller IGMP snooping B. unicast AP multicast mode C. multicast AP multicast mode D. broadcast forwarding **Answer: C**

**Resources From:** 1. 2020 Latest Braindump2go 300-430 Exam Dumps (PDF & VCE) Free Share: <https://www.braindump2go.com/300-430.html> 2. 2020 Latest Braindump2go 300-430 PDF and 300-430 VCE Dumps Free Share: [https://drive.google.com/drive/folders/16vzyRXoZZyqi0Y--JVJl\\_2HIEWTVkB2N?usp=sharing](https://drive.google.com/drive/folders/16vzyRXoZZyqi0Y--JVJl_2HIEWTVkB2N?usp=sharing) 3. 2020 Latest 300-430 Exam Questions from: <https://od.lk/fl/NDZfMTIyNjgyNV8> Free Resources from Braindump2go, We Devoted to Helping You 100% Pass All Exams!