

[22th/11/2017 100% Real 300-460 Exam Dumps PDF 65Q Free Download in Braindump2go [Q11-Q18

2017 November New Cisco 300-460 Exam Dumps with PDF and VCE Free Updated Today! Following are some new 300-460

Questions:1.|2017 New 300-460 Exam Dumps (PDF & VCE) 65Q&As Download:

<https://www.braindump2go.com/300-460.html>2. | 2017 New 300-460 Exam Questions & Answers Download:

<https://drive.google.com/drive/folders/0B75b5xYLjSSNNTN5eEx3V2NUQzA?usp=sharing>QUESTION 11 Which three statements about context workflow mapping in Cisco UCS Director are true? (Choose three.) A. You can execute a workflow that contains a set of tasks from within a context of a component. B. Workflows cannot be mapped in the form of an action, nor can they be executed in the context of of a component. C. You have to browse for a required workflow in the workflow list to execute it. D.

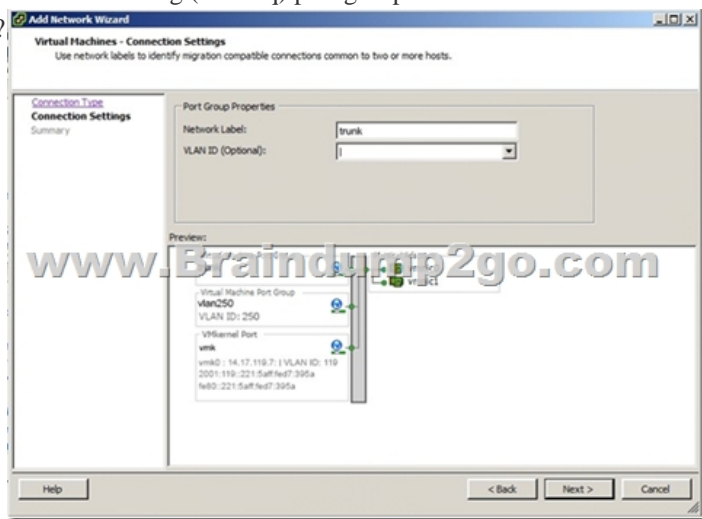
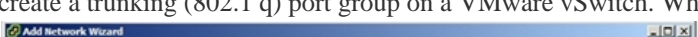
Context workflow mapping consists of two stages: Stage 1 - Create a context mapper task and add it to the workflow that must be mapped as an action Stage 2 - Add the workflow to the content mapper list by giving in an action label E. Context workflow mapping consists of two stages: Stage 1 - Create the workflow to the content mapper list by giving in an action label Stage 2 - Add a context mapper task to the workflow that must be mapped as an action F. You can map a workflow in the form of an action and execute it in the context of the component Workflows cannot be executed at the component level Answer: ACDE Explanation:

http://www.cisco.com/c/en/us/td/docs/unified_computing/ucs/ucs-director/orchestration-guide/5-

0/b UCS Director Orchestration Guide 5 0/b UCS Director Orchestration Guide 5 0 chapter 0101.html#concept 3BA2EDA

DF4724218802E5CE3184B27A0QUESTION 12In Cisco UCSM, which two options describe the purpose of a service profile template? (Choose two.)A. With a service profile template, you can quickly create several service profiles with the same basic parameters, such as the number of vNICs and vHBAs, and with identify information drawn from the same pools.B. A service profile template parameterizes the UUIDs that differentiate one instance of an otherwise identical server from another. Templates can be categorized into two types: initial and updating.C. When using an initial service profile template, changes to the initial template automatically propagate to the bound service profiles.D. Service profiles created from an updating service profile template do not inherit all the properties of the template and remain connected to the template. Any changes to the template must be propagated manually to the service profiles that are created from the template.

Answer: ABQUESTION 13Refer to the exhibit. You have been asked to create a trunking (802.1 q) port group on a VMware vSwitch. Which number must be assigned as the VLAN ID to trunk all VLANs?



A. 4095B. 1C. 1-4095D. 0Answer: CQUESTION 14During which process are Cisco UCS UUID, MAC, and WWPN identifiers allocated from the pool?A. service profile instantiationB. server boot timeC. service profile assignment to a serverD. service profile template creationAnswer: CQUESTION 15Which port-channel type is the best when deploying a Cisco Nexus 1000V with Cisco UCS B-Series Blades?A. channel-group mode on sub-group cdpB. channel-group auto mode on mac-pinningC. channel-group auto mode activeD. channel-group mode on mac-pinningAnswer: BExplanation:

http://www.cisco.com/c/en/us/products/collateral/switches/nexus-1000v-switch-vmware-vsphere/white_paper_c11-558242.html

QUESTION 16 Which two statements about Fibre Channel zoning in Cisco UCS are true? (Choose two.)
A. Zoning is configured on a per-VSAN basis.
B. Cisco UCS does not support zoning.
C. Zoning is configured on a per fabric basis.
D. Zoning can be enabled at the fabric level in switch mode.
E. You cannot enable zoning at the fabric interconnect level.
Answer: CD
QUESTION 17

An administrator is installing a hypervisor on a Cisco USB B-Series Blade Server. In which three locations can the OS image be installed in Cisco UCSM? (Choose three.)
A. local disk
B. CD-ROM
C. PXED
D. LAN boot
E. SAN
F. USB
Answer: ACE
Explanation:

http://www.cisco.com/c/en/us/td/docs/unified_computing/ucs/sw/gui/config/guide/1-0-2/b_GUI_Config_Guide/GUI_Config_Guide_chapter25.pdf

QUESTION 18 Which is the step to associate an application profile EPG to a VMM domain?
A. The APIC pushes the EPGs as virtual switches to the VM controller.
B. The VMM administrator creates the port groups in the Tenant window then assigns the EPGs to CPPAs.
C. The APIC pushes the EPGs as port groups in the VM controller.
D. The policy administrator assigns the EPG to physical endpoints in the VMM.
Answer: C
Explanation: Provisioning of EPGs in VMM Domain--Associates application profile EPGs to VMM domains as follows:
The APIC pushes these EPGs as port groups in the VM controller. The compute administrator then places vNICs into these port groups.
An EPG can span multiple VMM domains, and a VMM domain can contain multiple EPGs.
!!!RECOMMEND!!!
1. 2017 New 300-460 Exam Dumps (PDF & VCE) 65Q&As Download:

<https://www.braindump2go.com/300-460.html>
2. 2017 New 300-460 Study Guide Video: YouTube Video:

[YouTube.com/watch?v=y0FCnQVUX7k](https://www.youtube.com/watch?v=y0FCnQVUX7k)