

70-448 Exam Dumps PDF&VCE Free Download From Braindump2go (291-300)

2015 Microsoft 70-448 Certification Exam is coming! Getting a Laest 70-448 Practice Test is very important for an Exam Candiate! Braindump2go New Updated 70-448 Exam Questions Well Formatted in PDF and VCE versions, providing you convenience and excellence both at the same time! Free Questions and Answer are provided Following: Exam Code: 70-448Exam Name: Microsoft SQL Server 2008, Business Intelligence Development and MaintenanceCertification Provider: MicrosoftCorresponding Certifications: MCITP: Business Intelligence Developer 2008, MCSA, MCSA: SQL Server 2008, MCTS, MCTS: Microsoft SQL Server 2008, Business Intelligence Development and MaintenanceKeywords: 70-448 Exam Dumps,70-448 Practice Tests,70-448 Practice Exams,70-448 Exam Questions,70-448 PDF,70-448 VCE Free,70-448 Book,70-448 E-Book,70-448 Study Guide,70-448 Braindump,70-448 Prep Guide

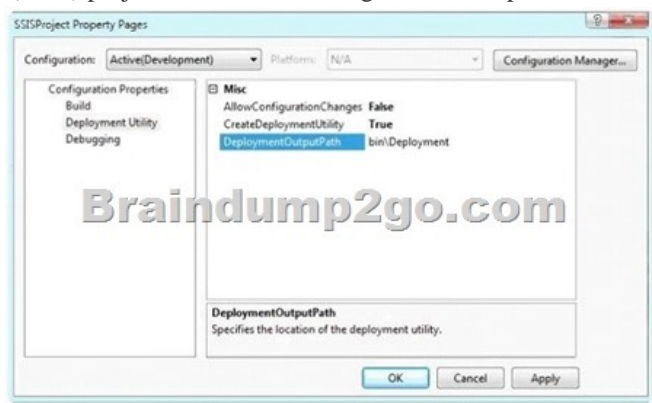
Compared Before Buying Microsoft 70-448 PDF & VCE!

Pass4sure	Braindump2go 100% Pass OR Money Back	Test King
332 Q&As - Practice	352 Q&As - Real Questions	332 Q&As - Practice
\$125.99	\$99.99	\$124.99
No Discount	Coupon Code: BDNT2014	No Discount

QUESTION 291You design a report by using SQL Server 2008 Reporting Services (SSRS).The report will be included in a Windows Forms application that is distributed to remote users. These users have no access to the report server.You need to ensure that the application renders the report correctly.What should you do? A. Use the ReportViewer control along with the LocalReport property.B. Use the ReportViewer control along with the RemoteReport property.C. Use the Render method of the Reporting Services Simple Object Access Protocol (SOAP) API.D. Use the RenderStream method of the Reporting Services Simple Object Access Protocol (SOAP) API. Answer: A QUESTION 292You design a report by using SQL Server 2008 Reporting Services (SSRS).Detail information is displayed each time the users render the report.You need to ensure that the following requirements are met:- Summary information is displayed when the report is initially rendered.- Detail information is displayed only when the users click a column header.What should you do? A. On the column that contains detail information, set the hidden property to True. Set the Visibility can be toggled by another report item property to True.B. On the column that contains detail information, set the hidden property to False. Set the Visibility can be toggled by another report item property to False.C. On the column that contains detail information, set the hidden property to True. Set the Visibility can be toggled by another report item property to False.D. On the column that contains detail information, set the hidden property to False. Set the Visibility can be toggled by another report item property to True. Answer: A QUESTION 293You develop a SQL Server 2008 Reporting Services (SSRS) report. The report contains a parameter named Category that is used to filter a list of products. The list uses a dataset that contains the following query:

```
SELECT p.ProductID, p.Name, p.ListPrice
FROM Product p
WHERE p.Category = @Category;
```

You modify the report parameter to allow multiple values. You need to modify the report to help search for multiple Category values by using minimum amount of development effort.What should you do? A. Implement the query in a view.B. Implement the query in a table-valued user-defined function.C. Modify the query to use the IN operator instead of the = operator.D. Implement the query in a stored procedure that uses dynamic SQL to execute the query. Answer: C QUESTION 294You are developing a SQL Server 2008 Integration Services (SSIS) project in Business Intelligence Development Studio.You configure the project properties as shown in the following image.



You need to create a deployment manifest for all packages in the project. What should you do? A. Build the Integration Services project. B. Modify the AllowConfigurationChanges property of the project. C. Copy each package. Rename each copy with a .SSISDeploymentManifest file extension. D. View the code of each Data Transformation Services (DTS) package. Copy the first <DTS:Property> xml node to a file with a .SSISDeploymentManifest file extension. Answer: A

QUESTION 295 You create a SQL Server 2008 Integration Services (SSIS) package by using SQL Server 2008. You use a development server named SQL_DEV1. There is no network connectivity between the development server and the production server. You deploy the package to the SQL_PROD1 server. The package fails to execute. The error message states that the package cannot connect to the SQL_DEV1 server. You need to modify the package to refer to the SQL_PROD1 server when being executed. What should you do? A. Modify the properties of the package to use the DontSaveSensitive package protection level. B. Modify the deployment manifest file in Microsoft Notepad, and then modify the connection string manually. C. On the Connection Managers tab of the Execute Package utility, select the Connection Manager check box, and then modify the connection string. D. Modify the properties of the package to use the ServerStorage package protection level. Answer: C

QUESTION 296 You are developing a SQL Server 2008 Integration Services (SSIS) package. The package performs the following tasks: - Processes multiple files by using a ForEach Loop container. - Imports the contents of the files to a table by using a Data Flow task. - Logs the results of the status into a table by using an Execute SQL task. You need to ensure that all the tasks of the package except the Execute SQL task execute within a single transaction. Which two actions should you perform? (Each correct answer presents part of the solution. Choose two.) A. In the Foreach Loop container, configure the TransactionOption property to NotSupported. B. In the Data Flow task, configure the TransactionOption property to Required. C. In the package, configure the TransactionOption property to Required. D. In the package, configure the TransactionOption property to NotSupported. E. In the Execute SQL task, configure the TransactionOption property to NotSupported. F. In the Execute SQL task, configure the TransactionOption property to Supported. Answer: CE

QUESTION 297 You build and deploy a SQL Server 2008 Integration Services (SSIS) package. During package development, the XML configuration is not specified. You need to apply the configuration to the deployed package. What should you do? A. Use the Deployment utility. B. Use the SETX command line utility. C. Use the DTUTIL command line utility. D. Use the DTEXEC command line utility. Answer: D

QUESTION 298 You administer a SQL Server 2008 Analysis Services (SSAS) instance. You plan to troubleshoot query performance by using a Dynamic Management View (DMV). You need to identify query sessions that execute a query for more than 30,000 ms. Which DMV should you use? A. Discover_Traces. B. Discover_Sessions. C. Discover_Commands. D. Discover_Connections. Answer: C

QUESTION 299 You update a role named Managers for the Human Resources cube in your SQL Server 2008 Analysis Services (SSAS) database. The database contains a dimension named Employee. You plan to configure the security for the Managers role. You need to allow the Managers role to access aggregate data based on only three or less employees. What should you do? A. Add members of the [Employee].[Employees] hierarchy that contain three or less children to the denied set for the Managers role. B. Add members of the [Employee].[Employees] hierarchy that contain more than three children to the allowed set for the Managers role. C. Add the following expression to the Allow Reading property in Cell Data in the Managers role. Descendants([Employee].[Employees].CurrentMember, LEAVES).Count <= 3. D. Add the following expression to the Allow Reading property in Cell Data in the Managers role. IIF(Descendants([Employee].[Employees].CurrentMember, LEAVES).Count <= 3, [Employee].[Employees].CurrentMember, null). Answer: C

QUESTION 300 You maintain a SQL Server 2008 Analysis Services (SSAS) database. You plan to refresh data in a partition every two hours. You need to implement the incremental processing strategy. Which XML for Analysis (XMLA) command should you use? A. ProcessAdd. B. ProcessData. C. ProcessFull. D. ProcessIndex. Answer: A

Braindump2go Guarantee: Pass-Certification 70-448 offers absolute risk free investment opportunity, values your time and money! Braindump2go latest 70-448 Real Exam Dumps - Your success in 70-448 Exam is certain! Your belief in our 70-448 Exam Dumps is further strengthened with 100% Money Back Promise from Braindump2go!

Compared Before Buying M

Pass4sure	Brain
332 Q&As - Practice	100% Pas
\$125.99	352 Q&As -
No Discount	\$99.99
	Coupon Cod

<http://www.braindump2go.com/70-448.html>