

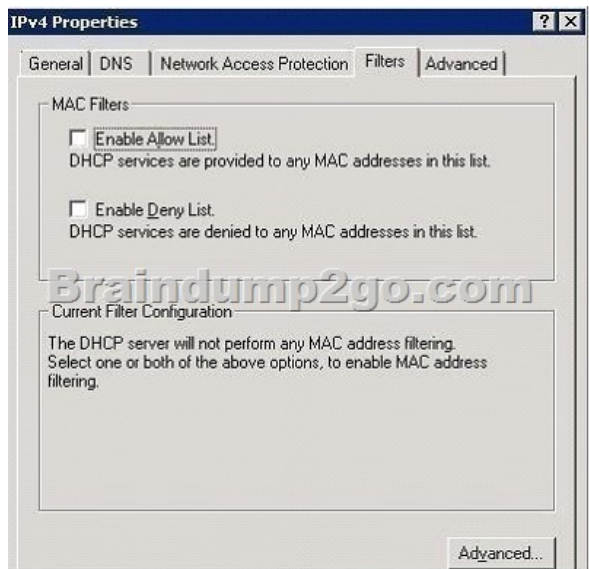
Braindump2go 100% Money Back Guarantee For 100% Passing 70-642 Exam Using New Updated Microsoft 70-642 Exam Dumps (201-210)

Are You Interested in Successfully Completing the Microsoft 70-642 Certification Then Start to Earning Salary? Braindump2go has Leading Edge Developed Microsoft Exam Questions that will Ensure You Pass this 70-642 Certification! Braindump2go Delivers you the Most Accurate, Current and Latest Updated 70-642 Certification Exam Questions Available with a 100% Money Back Guarantee Promise! Vendor: Microsoft Exam Code: 70-642 Exam Name: TS: Windows Server 2008 Network Infrastructure, Configuring Keywords: 70-642 Exam Dumps, 70-642 Practice Tests, 70-642 Practice Exams, 70-642 Exam Questions, 70-642 Dumps, 70-642 PDF, 70-642 VCE, 70-642 Study Guide

Compared Before Buying Microsoft 70-642 PDF & VCE!

| Pass4sure | Braindump2go | TestKing |
|--------------|---------------------------|---------------------|
| | 100% Pass OR Money Back | |
| Not In Stock | 448 Q&As – Real Questions | 199 Q&As – Practice |
| / | \$99.99 | \$189.98 |
| / | Coupon Code: BDNT2014 | No Discount |

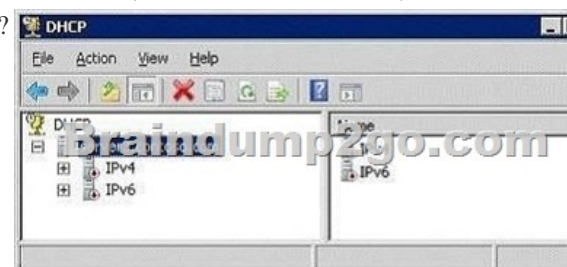
QUESTION 201 Your network contains an Active Directory domain named contoso.com. The network is configured to use ISATAP. You have a server named Server1 that runs Windows Server 2008 R2. On Server1, you discover that a tunnel adapter named isatap.contoso.com has a Media State of "Media disconnected". You confirm that Server1 has a valid network connection and can query the DNS server. You need to ensure that the isatap.contoso.com tunnel adapter has an IPv6 address. What should you do? A. Start the IP Helper service. B. Start the IPsec Policy Agent service. C. Add a new rule to Windows Firewall. D. Add an entry for ISATAP to the Hosts file. Answer: A Explanation: The IP Helper service service must be running for IPv6 transition technologies such as ISATAP, Teredo, and 6to4 to function on the computer. This service provides automatic IPv6 connectivity over an IPv4 network, and if the service is stopped, the computer will have only IPv6 connectivity if it is connected to a native IPv6 network. Therefore, if your network is not native IPv6, disabling this service on Windows Server 2008 computers effectively disables IPv6 on them. QUESTION 202 Your company has a branch office that contains 1,000 computers. You need to select a network address that supports 1,000 computers in the same subnet. The solution must minimize the number of unused addresses in the subnet. Which address range should you configure? A. 172.16.0.0/16 B. 172.16.0.0/18 C. 172.16.0.0/22 D. 172.16.0.0/24 Answer: C QUESTION 203 Your network contains a computer named Computer1. Computer1 is assigned an IP address of 192.168.1.112/26. Your company's corporate policy states that the first usable address in each subnet is allocated to the default gateway. You need to configure the default gateway for Computer1. Which address should you choose? A. 192.168.1.1 B. 192.168.1.63 C. 192.168.1.65 D. 192.168.1.93 Answer: C QUESTION 204 Your network contains a single Active Directory domain. All servers run Windows Server 2008 R2. You have an IPv6-only infrastructure that has multiple subnets. You deploy a new server named Server1. You need to ensure that Server1 can communicate with the client computers in all of the internal subnets. The solution must use an address that is reserved for internal networks. Which address should you assign? A. 2001::68c0:9f7c:8393:c214 B. FC00::68c0:9f7c:8393:c214 C. FE80::68c0:9f7c:8393:c214 D. FF02::68c0:9f7c:8393:c214 Answer: B QUESTION 205 Your network contains two DHCP servers named Server1 and Server2. On Server1, you create a scope named Scope1. You need to ensure that DHCP clients receive IP addresses from the address range in Scope1 if Server1 is unavailable. The solution must prevent both servers from assigning duplicate IP addresses. What should you do from the DHCP console? A. On Server1, create a superscope. B. On Server1, select Scope1, and then run the Split-Scope wizard. C. On Server2, create a scope, and then reconcile each scope. D. On Server2, create a scope, and then enable Network Access Protection. Answer: B QUESTION 206 Your network contains an Active Directory domain. The domain contains a DHCP server named Server1. You create a scope named Scope1 on Server1. You need to prevent unauthorized DHCP clients from receiving addresses from Server1. What should you do? A. From the DHCP console, configure filters. B. From the Local Security Policy console, modify the network settings. C. From the Local Users and Groups console, modify the membership of the DHCP Users group. D. From the Netsh tool, change to the DHCP Server context, and then run the initiate auth command. Answer: A Explanation: On DHCP>IPv4, click on properties, then click on filters tab:



QUESTION 207 You need to add a reservation for a print device to a DHCP scope. Which two components should you include in the reservation? (Each correct answer presents part of the solution. Choose two.) A. the default gateway B. the IP address C. the MAC address D. the printer server name E. the subnet mask Answer: BC Explanation: A reservation reserves an IP address based on the MAC address. QUESTION 208 Your network contains two DHCP servers named Server1 and Server2. Server1 and Server2 are located in the same subnet. You configure a split scope named Scope1 on the DHCP servers. You need to ensure that Server2 only responds to DHCP client requests if Server1 is unavailable. What should you modify? A. the Scope1 properties for Server1 B. the Scope1 properties for Server2 C. the server options for Server1 D. the server options for Server2 Answer: B Explanation: You need to configure a delay in the properties of Scope1 on Server2 so that Server1 always responds first.



QUESTION 209 Your network contains a DHCP server that is configured as shown in the exhibit. (Click the Exhibit button.) You need to ensure that the DHCP server can respond to DHCP clients. What should you do?



A. From the DHCP console, authorize the DHCP server.B. From the Services console, start the DHCP Server service.C. From Network Connections, modify the IPv4 properties and the IPv6 properties.D. From the Local Users and Groups snap-in, add the Server3 computer account to the DHCP Administrators group. Answer: A QUESTION 210Your network contains a server named Server1. Server1 runs Windows Server 2008 R2 and has a single network connection. The connection is configured to use a default gateway address of 10.0.0.1. The default gateway has a metric value of 100. You configure a second default gateway that uses an address of 10.0.0.2. You need to ensure that 10.0.0.2 is only used as the default gateway if 10.0.0.1 is unreachable.What should you do? A. For the interface, set the interface metric to 100.B. For the 10.0.0.2 gateway, set the metric to 50.C. For the 10.0.0.2 gateway, set the metric to 200.D. For the 10.0.0.1 gateway and the 10.0.0.2 gateway, enable automatic metric. Answer: C All 448 Microsoft 70-642 Exam Dumps Questions are the New Checked and Updated! In recent years, the 70-642 certification has become a global standard for many successful IT companies. Looking to become a certified Microsoft professional? Download Braindump2go 2015 Latest Released 70-642 Exam Dumps Full Version and Pass 70-642 100%!

Compared Before Buying Microsoft 70-642 PDF &

| Pass4sure | Braindump2go | |
|--------------|---------------------------|----------|
| | 100% Pass OR Money Back | |
| Not In Stock | 448 Q&As – Real Questions | 199 Q& |
| / | \$99.99 | \$189.98 |
| / | Coupon Code: BDNT2014 | No Disc |

<http://www.braindump2go.com/70-642.html>