

Braindump2go Free 70-662 Exam PDF Instant Download (181-190)

MICROSOFT NEWS: 70-662 Exam Questions has been Updated Today! Get Latest 70-662 VCE and 70-662 PDF Instantly! Welcome to Download the Newest Braindump2go 70-662 VCE&70-662 PDF Dumps:

<http://www.braindump2go.com/70-662.html> (507 Q&As) We never believe in second chances and Braindump2go brings you the best 70-662 Exam Preparation Materials which will make you pass in the first attempt. We guarantee all questions and answers in our 70-662 Dumps are the latest released, we check all exam dumps questions from time to time according to Microsoft Official Center, in order to guarantee you can read the latest questions!! Exam Code: 70-662 Exam Name TS: Microsoft Exchange Server 2010, Configuring Certification Provider: Microsoft Corresponding Certifications: MCITP, MCITP: Enterprise Messaging Administrator on Exchange 2010, MCTS, MCTS: Microsoft Exchange Server 2010, Configuring 70-662 Dumps, 70-662 PDF, 70-662 PDF eBook, 70-662 Braindump, 70-662 Study Guide, 70-662 Book, 70-662 Practice Test, 70-662 Dumps PDF, 70-662 VCE, 70-662 VCE Dumps, 70-662 Valid Dumps, 70-662 Exam Questions Free, 70-662 Dumps, 70-662 Free Dumps, 70-662 Questions and Answers Free, 70-662 Braindump PDF, 70-662 Braindump VCE, 70-662 Preparation

TS: Microsoft Exchange Server 2010, Configuring: 70-662



Questions and Answers : 507
Q&As

Updated: Jan 02, 2016

~~\$429.99~~ **\$99.99**

[PDF DEMO](#)

[CHECK OUT](#)

Product Description Exam Number/Code: 70-662

Exam Number/Code: 70-662

"TS: Microsoft Exchange Server 2010, Configuring", also known as 70-662 Certification. With the complete collection of questions and answers, Braindump2go assembled to take you through 507 Q&As to your 70-662 Exam preparation resources, you will cover every field and category in Microsoft MCITP to your successful Microsoft Certification.

Free Demo Download

Braindump2go offers free demo for 70-662 exam (TS: Microsoft Exchange Server 2010, Configuring). You can check out the interface, question quality and usage of exams before you decide to buy it.

☒ **Printable PDF** ☒ **Premium VCE + VCE Simulator**

QUESTION 181 You have an Exchange Server 2010 organization that contains an Edge Transport server named Edge1. All email messages to the Internet are sent from Edge1. You need to prevent all members of a group named Group1 from sending email messages to the Internet. Your solution must provide a custom non-delivery report (NDR) message to the users when they send an email message to the Internet. What should you create? A. a custom MailTip and a transport rule B. a custom MailTip, a remote domain, and a Send connector C. a custom Delivery Status Notification message and a transport rule D. a custom Delivery Status Notification message and a Send connector Answer: C **QUESTION 182** You have an Exchange organization. All servers in the organization have Exchange Server 2010 Service Pack 1 (SP1) installed. The organization contains a database availability group (DAG) named DAG1. DAG1 contains three Mailbox servers including a server named Server1. Server1 fails. You restore Server1. You need to ensure that Server1 can replicate mailbox databases from DAG1. What should you do first? A. Modify the GUID for Server1 B. Removed the object for Server1 from DAG1 C. Remove the default Mailbox Database from Server1 D. Disable log truncation for the Mailbox database in DAG1 Answer: C Explanation: Remove-DatabaseAvailabilityGroupServer-Identity DAG1-MailboxServer MBX1 <http://technet.microsoft.com/en-us/library/dd638206.aspx> **QUESTION 183** Your network contains a single Active Directory site. You install 10 new Exchange Server 2010 Service Pack 1 (SP1) Client Access servers. All servers are configured to use a wildcard certificate. Users connect to their mailboxes by using Windows Mobile 6.5 devices. All devices are configured to connect to cas.contoso.com. You need to ensure that the users can connect to their mailboxes by using mail.contoso.com. Which cmdlet should you use? A. set-activesyncdeviceaccessrule B. set-activesyncmailboxpolicy C. set-activesyncorganizationsetting D. set-activesyncvirtualdirectory Answer: D **QUESTION 184** Your network contains two Active Directory forests named Contoso and Nwtraders. The Contoso forest contains Exchange Server 2003 Service Pack 2 (SP2) servers. The Nwtraders forest contains Exchange Server 2010 Service Pack 1 (SP1) servers. You need to move all mailboxes from Contoso to Nwtraders. What should you do from the Nwtraders forest? A. Create a linked mailbox for each mailbox in Contoso. Run the Move-Mailbox cmdlet B. Create a shared mailbox for each mailbox in Contoso. Run the New-MoveRequest cmdlet C. Create a mail enabled contact for each mailbox in Contoso. Run the Move-Mailbox cmdlet D. Create a mail enabled user for each mailbox in Contoso. Run the New-MoveRequest cmdlet Answer: D Explanation: Microsoft Exchange Server 2010 supports remote mailbox

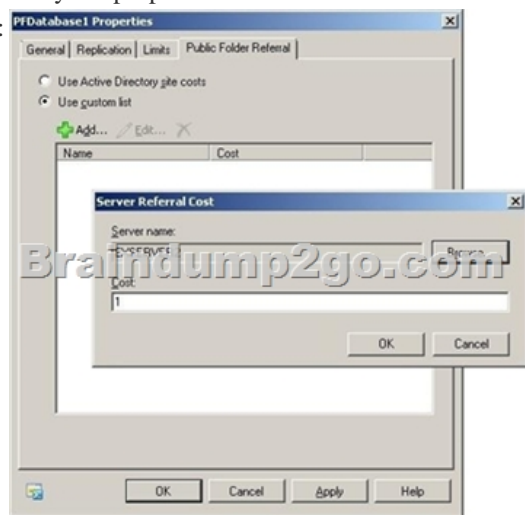
moves via the New-MoveRequest cmdlet. To move a mailbox from an Exchange Server 2010, Exchange Server 2007, or Exchange Server 2003 forest to another Exchange 2010 forest, the Exchange 2010 target forest must contain a valid mail-enabled user with a specified set of Active Directory attributes. (Exchange 2010 doesn't support moving an Exchange 2000 Server mailbox.) If there is at least one Exchange 2010 Client Access server deployed in the forest, the forest is considered an Exchange 2010 forest.

<http://technet.microsoft.com/en-us/library/ee633491.aspx> QUESTION 185 You have an Exchange Server 2010 database availability group (DAG) that contains five members and a mailbox database named DB1. You need to identify which servers have a copy of DB1. The solution must also identify the log replay lag times for each copy. Which command should you run? A.

Get-Availabilityconfig -Identity DB1 | FLB. Get-DatabaseAvailabilityGroup -Identity DB1 | FLC. Get-MailboxDatabase -Identity DB1 | FLD. Get-MailboxDatabaseCopyStatus -Identity DB1 | FL Answer: C QUESTION 186 You have a hosted

Exchange organization. All servers in the organization have Exchange Server 2010 Service Pack 1 (SP1) installed. An internal user named User1 sends a confidential message to another internal user named User2. User1 does not have any administrative privileges in the organization. You need to ensure that User1 can identify whether the message was successfully delivered. What should you instruct User1 to do? A. View the message headers in the sent item folder B. Open Microsoft Outlook and modify Read Receipt Settings C. Open Microsoft Outlook and modify Delivery Receipt Settings D. Open the Exchange Control Panel (ECP) and select Organize E-Mail. Answer: D QUESTION 187 You have an Exchange organization. All servers in the organization have Exchange

Server 2010 Service Pack 1 (SP1) installed. The organization contains two Mailbox servers named Server1 and Server2. Each Mailbox server has one mailbox database and one public folder database. You discover that all users create public folders on Server1 only. You need to ensure that all users create public folders on Server2 only. What should you do? A. Move all Mailboxes to Server2 B. Remove all Public Folder replicas from Server1 C. Modify the properties of both mailbox databases D. Modify properties of both Public Folder Databases Answer: C Explanation:



Public folder referrals have an associated cost number. The numbers range from 1 through 100. This cost number is used to optimize message flow. Specifically, e-mail messages are routed according to lowest cost number. If two or more routes are available with the same cost, the load is distributed as equally as possible between them. This cost is also used to calculate the most appropriate route that the client application (such as Microsoft Outlook) can use to access public folders on remote servers. You can also change the default public folder database. This will point the users to the appropriate public folder database. Setting a referral cost and default public folder database are both done through the properties of the mailbox database. Reference:

<http://technet.microsoft.com/en-us/library/bb629522.aspx> <http://technet.microsoft.com/en-us/library/bb629643> QUESTION 188 2010

Server has Message Tracking enabled. You need to modify storage location of message tracking logs. What should you do? A.

From the Shell Management Console apply Set-EventLogLevel cmdlet B. From the Shell Management Console apply

Set-TransportConfig cmdlet C. From the Exchange Management Console (EMC) modify properties of Mailbox Database D. From

the Exchange Management Console (EMC) modify properties of Hub Transport Server object Answer: D QUESTION 189 Your

network contains two Exchange Server 2010 Service Pack 1 (SP1) Mailbox servers. You create a database availability group (DAG).

You need to install all of the Failover Clustering components onto the Mailbox servers. What should you do? A. Run the

Start-ClusteredMailboxServer cmdlet on both servers B. Run Setup /roles:Mailbox /NewCMS on both servers C. Add both

servers to the DAG D. Install the Application server role on both servers. Answer: C Explanation:

<http://technet.microsoft.com/en-us/library/dd298065.aspx> QUESTION 190 An Organization 2010 has Servers 1 and 2 in a DAG with

CAS, HT and Mailbox Server roles. All Microsoft Outlook users automatically connect to an available CAS if a single server or service fails. What should you do? A. Create a CAS array. Create a new DNS record and IP addresses of B. Deploy a Hardware Load Balancer. Create a DNS record for Virtual IP address of Load Balancer. Create and configure a CAS array. C. Install a Load Balancer feature on both servers D. Remove Server2 for the DAG. Answer: B Braindump2go is one of the Leading 70-662 Exam Preparation Material Providers Around the World! We Offer 100% Money Back Guarantee on All Products! Feel Free In Downloading Our New Released 70-662 Real Exam Questions!

TS: Microsoft Exchange Server 2010, Configuring: 70-662



Questions and Answers : 507
Q&As

Updated: Jan 02, 2016

~~\$429.99~~ **\$99.99**

[PDF DEMO](#)

[CHECK OUT](#)

Product Description Exam Number/Code: 70-662

Exam Number/Code: 70-662

"TS: Microsoft Exchange Server 2010, Configuring", also known as 70-662 exam, is a Microsoft Certification. With the complete collection of questions and answers, Braindump2go has assembled to take you through 507 Q&As to your 70-662 Exam preparation. In the 70-662 resources, you will cover every field and category in Microsoft MCITP helping to ready you for your successful Microsoft Certification.

Free Demo Download

Braindump2go offers free demo for 70-662 exam (TS: Microsoft Exchange Server 2010, Configuring). You can check out the interface, question quality and usability of our practice exams before you decide to buy it.

☒ **Printable PDF** ☒ **Premium VCE + VCE Simulator**

FREE DOWNLOAD: NEW UPDATED 70-662 PDF Dumps & 70-662 VCE Dumps from Braindump2go:
<http://www.braindump2go.com/70-662.html> 507 Q&As)