

## Braindump2go New Released Microsoft 70-466 Dumps Free Share (81-90)

100% Full Money Back Guarantee Promised By Braindump2go to All 70-466 Exam Candidates: Braindump2go is confident that our NEW UPDATED 70-466 Exam Questions and Answers are changed with Microsoft Official Exam Center, If you cannot PASS 70-466 Exam, nevermind, we will return your full money back! Visit Braindump2go exam dumps collection website now and download 70-466 Exam Dumps Instantly Today! Vendor: MicrosoftExam Code: 70-466Exam Name: Implementing Data Models and Reports with Microsoft SQL Server 2014 Exam:

Compared Before Buying Microsoft 70-466 PDF & VCE!		
Pass4sure	Braindump2go 100% Pass OR Money Back	TestKing
Not In Stock	186 Q&As	50 Q&As
/	\$99.99	\$124.99
/	Coupon Code: BDN2014	/

QUESTION 81A multinational retailer has retail locations on several continents. A single SQL Server Reporting Services (SSRS) instance is used for global reporting. A SQL Server Analysis Services (SSAS) instance for each continent hosts a multidimensional database named RetailSales. Each RetailSales database stores data only for the continent in which it resides. All of the SSAS instances are configured identically. The cube names and objects are identical. Reports must meet the following requirements:- A report parameter named ServerName must be defined in each report. - When running a report, users must be prompted to select a server instance. - The report data source must use the Microsoft SQL Server Analysis Services data source type. You need to create a data source to meet the requirements. How should you define the expression that is assigned to the connection string property of the data source? A. ="Server=" & Parameters!ServerName.Value & ";Initial Catalog=RevenueData"B. ="Data Source=" & Parameters!ServerName.Value & ";Initial Catalog=RevenueData"C. ="Server=" & Parameters!ServerName.ValueD. ="Data Source=@ServerName;Initial Catalog=RevenueData"E. ="Server=@ServerName;Initial Catalog=RevenueData" Answer: B

QUESTION 82You install SQL Server Reporting Services (SSRS). You need to restore a copy of the symmetric key. Which command should you run? A. Rskeymgmt -dB. rskeymgmt -a -f %temp%rs.key -p Password1C. rskeymgmt -e -f %temp%rs.key -p Password1D. rskeymgmt -l Answer: B

QUESTION 83You are managing a SQL Server Reporting Services (SSRS) instance in native mode. A system role named Developer Support is present on the server. Members of the Developer Support role cannot modify the report execution timeout period. You need to enable members of the Developer Support role to modify the report execution timeout period. Which task should you add to the Developer Support role? A. Execute report definitions B. Manage shared schedulesC. Manage jobsB. Manage report server properties Answer: D

QUESTION 84You are designing a SQL Server Reporting Services (SSRS) report to display vineyard names and their year-to-date (YTD) grape yield. Grape yield values are classified in three bands:- High Yield- Medium Yield- Low YieldYou add a table to the report. Then you define two columns based on the fields named VineyardName and YTDGrapeYield. You need to set the color of the vineyard text to red, yellow, or blue, depending on the value of the YTD grape yield values. What should you do? A. Add an indicator to the table.B. Use an expression for the Style property of the vineyard text box.C. Use an expression for the Font property of the vineyard text box.D. Use an expression for the TextDecoration property of the vineyard text box.E. Use an expression for the Color property of the vineyard text box. Answer: E

QUESTION 85You are working with a SQL Server Reporting Services (SSRS) instance in native mode. An item role named Developer is present on the server. The Developer role cannot view and modify report caching parameters. You need to ensure that the Developer role can view and modify report caching parameters. Which task should you add to the Developer role? A. Manage report historyB. Manage all subscriptionsC. view data sourcesD. Manage individual subscriptions Answer: A

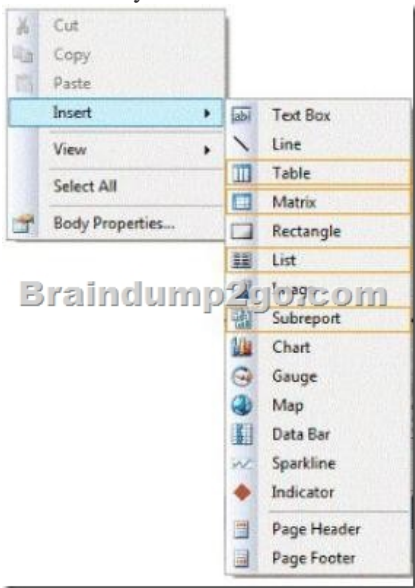
QUESTION 86Hotspot QuestionYou create a new report in SQL Server Data Tools (SSDT). The report queries a Microsoft Azure SQL Database database table. In a report table showing sales by cities, you need to enable users to interactively drill through to another report to show details of the customer sales within a chosen city. Which text box property page should you use? (To answer, select the appropriate tab in the answer area.)



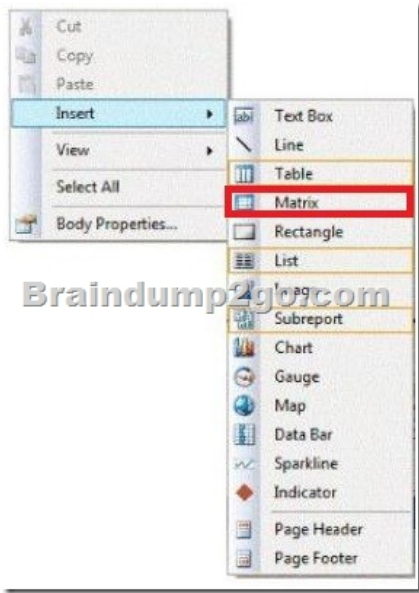
Answer:



QUESTION 87You are developing a SQL Server Analysis Services (SSAS) tabular project.You need to grant permission for salespersons to be able to view only the data based on their sales territory.What should you do? A. Create a member and then create a Multidimensional Expressions (MDX) filter.B. Create a member and then create a Data Analysis Expressions (DAX) filter.C. Create a role and then create a Multidimensional Expressions (MDX) filter.D. Create a role and then create a Data Analysis Expressions (DAX) filter. Answer: D QUESTION 88Hotspot QuestionYou are designing a SQL Server Reporting Services (SSRS) report that sources data from a SQL Azure database. You need to design the report to show the sum of sales. The sales must be grouped by region on the rows and year on the columns. Which report item should you add? To answer, select the appropriate setting in the answer area.



Answer:



QUESTION 89 Drag and Drop Questions You manage a SQL Server Reporting Services (SSRS) instance in native mode. You are building a shared dataset for your weekly performance reports. The shared dataset uses a data source that is configured to use credentials that are stored in the Report Server. You have a predefined shared schedule to perform cleanup and maintenance tasks for SSRS. You need to enable caching on the shared dataset. You also need to use an existing shared schedule to discard the cache. Which four actions should you perform in sequence? (To answer, move the appropriate actions from the list of actions to the answer area and arrange them in the correct order.)

- Open SharePoint Central Administration and then click the shared dataset.
- Select the Caching page and then click the **Cache shared dataset** checkbox.
- Open Report Manager and then click the shared dataset.
- Select the **Expire the cache on the following schedule** option and then select the **Shared Schedule** option.
- From the combo box, select the shared schedule and then click **Apply**.

Answer:

Open SharePoint Central Administration and then click the shared dataset.	Open Report Manager and then click the shared dataset.
Select the Caching page and then click the <b>Cache shared dataset</b> checkbox.	Select the Caching page and then click the <b>Cache shared dataset</b> checkbox.
Open Report Manager and then click the shared dataset.	Select the <b>Expire the cache on the following schedule</b> option and then select the <b>Shared Schedule</b> option.
Select the <b>Expire the cache on the following schedule</b> option and then select the <b>Shared Schedule</b> option.	From the combo box, select the shared schedule and then click <b>Apply</b> .
From the combo box, select the shared schedule and then click <b>Apply</b> .	

Explanation: Box 1: Open Report Manager and then click the shared dataset. We should use Report Manager (not SharePoint Central Administration). Box 2: Select the Caching page and then click the Cache shared dataset checkbox. We set up caching. Box 3: Select the Expire the cache on the following schedule option and then select the Shared Schedule option. We configure caching further. Box 4: From the combo box, select the shared schedule and then click Apply. Finally we define scheduling. Note on caching: To open the Caching properties page for a shared dataset Options include: Cache shared dataset (Box 2 above) Places a temporary copy of the data in a cache when a user first opens a report that uses this shared dataset. Subsequent users who run the report within the caching period receive the cached copy of the data. Caching usually improves performance because the data is returned from the cache instead of running the dataset query again. Expire the cache on the following schedule (box 3 above) Schedule the time when the cached data is no longer valid and is removed from the cache. The schedule can be a shared schedule or one that is specific for only the current shared dataset. Reference: SQL Server 2012, Caching Page, Shared Datasets (Report Manager) QUESTION 90 You are modifying a SQL Server Analysis Services (SSAS) multidimensional database. You have identified a dimension that is no longer used by any cubes. You need to delete the dimension. What should you do? A. Write a Multidimensional Expressions (MDX) command to drop the dimension from the database. B. Write a Data Mining Extensions (DMX) command to drop the dimension

from the database.C. Write a T-SQL command to drop the dimension from the database.D. Delete the dimension by using SQL Server Management Studio Object Explorer. Answer: D Braindump2go New Published Microsoft 70-466 Dumps PDF Contanins the latest questions from Microsoft Exam Center! 100% Certification got guaranteed!

**Compared Before Buying Microsoft 70-466 PDF & V**

Pass4sure	Braindump2go	Tes
	100% Pass OR Money Back	
Not In Stock	186 Q&As	50 Q&As
/	\$99.99	\$124.99
/	Coupon Code: BDNT2014	/

<http://www.braindump2go.com/70-466.html>