

## [Braindump2goMicrosoft 70-463 Study Guide PDF 247q(October 2016)New Updated[NQ11-NQ17

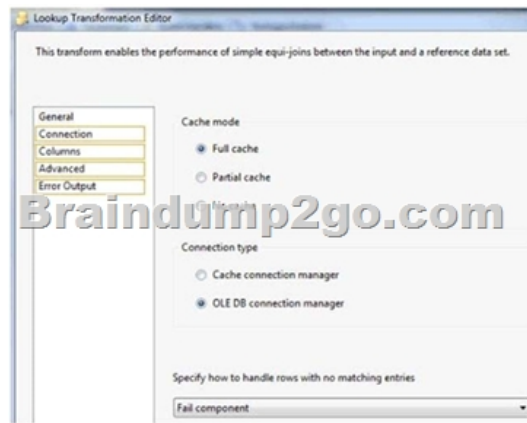
2016/10 New Microsoft 70-463: Implementing a Data Warehouse with Microsoft SQL Server 2012/2014 Exam Questions Updated!  
Free Instant Download 70-463 Exam Dumps (PDF & VCE) 247Q&As from Braindump2go.com Today! 100% Real Exam Questions! 100% Exam Pass Guaranteed! 1.|2016/10 New 70-463 Exam Dumps (PDF & VCE) 247Q&As Download:

<http://www.braindump2go.com/70-463.html> 2.|2016/10 New 70-463 Exam Questions & Answers:

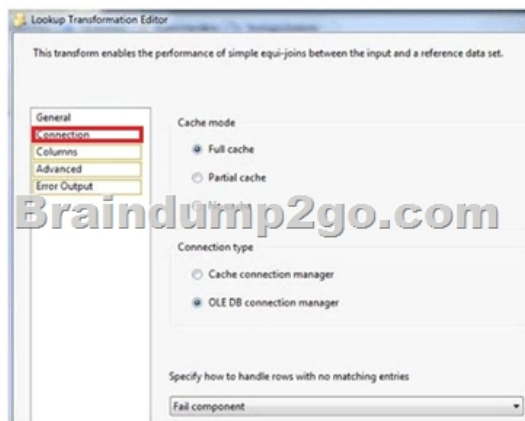
[https://drive.google.com/folderview?id=0B9YP8B9sF\\_gNQ3d3U1prZzU4bjg&usp=sharing](https://drive.google.com/folderview?id=0B9YP8B9sF_gNQ3d3U1prZzU4bjg&usp=sharing) QUESTION 11You are developing a SQL Server Integration Services (SSIS) package. You need to design a package to change a variable value during package execution by using the least amount of development effort.What should you use? A. Expression taskB. Script taskC. Execute SQL taskD.

Execute Process taskE. Term Extraction transformation Answer: AExplanation:

<http://msdn.microsoft.com/en-us/library/hh213137.aspx> QUESTION 12Hotspot QuestionsYou are developing a data flow to load sales data into a fact table. In the data flow, you configure a Lookup Transformation in full cache mode to look up the product data for the sale. The lookup source for the product data is contained in two tables. You need to set the data source for the lookup to be a query that combines the two tables. Which page of the Lookup Transformation Editor should you select to configure the query? To answer, select the appropriate page in the answer area.



Answer:



QUESTION 13You are creating a SQL Server Integration Services (SSIS) package to retrieve product data from two different sources. One source is hosted in a SQL Azure database. Each source contains products for different distributors. Products for each distributor source must be combined for insertion into a single product table destination. You need to select the appropriate data flow transformation to meet this requirement. Which transformation types should you use? (Each correct answer presents a complete solution. Choose all that apply.) A. MulticastB. Merge JoinC. Term ExtractionD. union AllE. Merge Answer: DE

Explanation:<http://msdn.microsoft.com/en-us/library/ms141703.aspx><http://msdn.microsoft.com/en-us/library/ms141775.aspx>

<http://msdn.microsoft.com/en-us/library/ms141020.aspx><http://msdn.microsoft.com/en-us/library/ms141809.aspx>

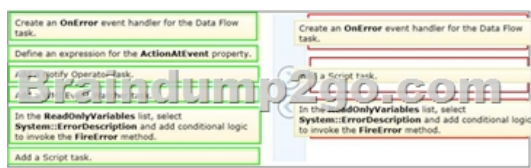
<http://msdn.microsoft.com/en-us/library/ms137701.aspx> QUESTION 14You are using SQL Server Data Tools to develop a SQL

Server Integration Services (SSIS) project. The first package that you create in this project contains a package connection that accesses a flat file. Additional packages in the project must also access this file. You need to define and reuse the flat file connection

in all project packages. What should you do? A. Convert the package Connection Manager in the first package to a project Connection Manager.B. Copy the package Connection Manager and paste it into the second package.C. Convert the project to the Package Deployment model.D. Set the ProtectionLevel property of the package Connection Manager to DontSaveSensitive to reuse the flat file connection. Answer: A QUESTION 15Drag and Drop QuestionA Data Flow task in a SQL Server Integration Services (SSIS) package produces run-time errors. You need to edit the package to log specific error messages. Which three actions should you perform in sequence? (To answer, move the appropriate actions from the list of actions to the answer area and arrange them in the correct order.)



Answer:



QUESTION 16You are designing a SQL Server Integration Services (SSIS) package that uses the Fuzzy Lookup transformation. The reference data to be used in the transformation does not change. You need to reuse the Fuzzy Lookup match index to increase performance and reduce maintenance. What should you do? A. Select the GenerateAndPersistNewIndex option in the Fuzzy Lookup Transformation Editor.B. Select the GenerateNewIndex option in the Fuzzy Lookup Transformation Editor.C. Select the DropExistingMatchIndex option in the Fuzzy Lookup Transformation Editor.D. Execute the sp\_FuzzyLookupTableMaintenanceUninstall stored procedure.E. Execute the sp\_FuzzyLookupTableMaintenanceInvoke stored procedure. Answer: AExplanation:<http://msdn.microsoft.com/en-us/library/ms137786.aspx> QUESTION 17You are using a SQL Server Integration Services (SSIS) project that is stored in the SSIS catalog. An Environment has been defined in the SSIS catalog. You need to add the Environment to the project.Which stored procedure should you use? A. catalog.set\_environment\_reference\_typeB. catalog.set\_environment\_propertyC. catalog.create\_environment\_referenceD. catalog.create\_environment Answer: C !!!RECOMMEND!!! 1.Braindump2go|2016/10 New 70-463 Exam Dumps (PDF & VCE) 247Q&As Download:<http://www.braindump2go.com/70-463.html> 2.Braindump2go|2016/10 New 70-463 Exam Questions & Answers:[https://drive.google.com/folderview?id=0B9YP8B9sF\\_gNQ3d3U1prZzU4bjg&usp=sharing](https://drive.google.com/folderview?id=0B9YP8B9sF_gNQ3d3U1prZzU4bjg&usp=sharing)