

Download Free Microsoft 70-640 VCE Files From Braindump2go - Get Microsoft 70-640 Certification Right Now (241-250)

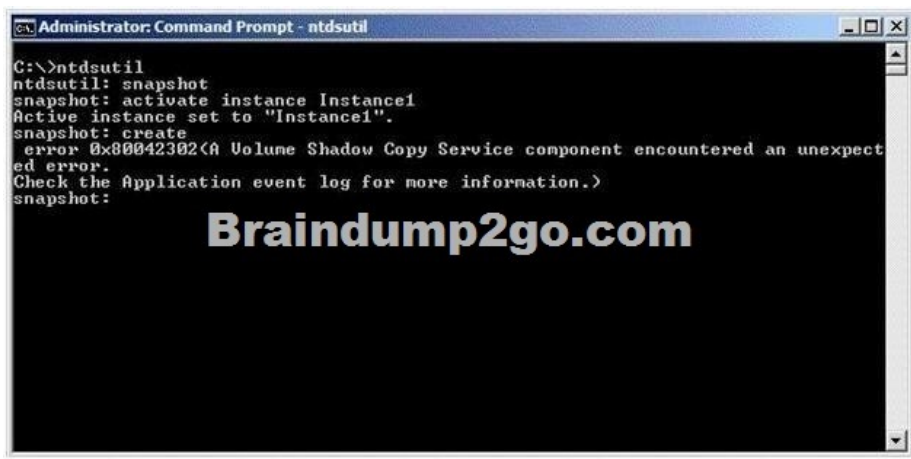
Braindump2go New Released 70-640 Exam Dumps Questions New Updated Today: Latest 651 Questions and Answers
Explanation. Guarantee you 100% Success when you attend Microsoft MCM 70-640 Exam! We update 70-640 Exam Dumps
Questions every day and you can come to download our latest 70-640 Practice Tests daily! Vendor: Microsoft Exam Code: 70-640
Exam Name: TS: Windows Server 2008 Active Directory, Configuring Keywords: 70-640 Exam Dumps,70-640 Practice
Tests,70-640 Practice Exams,70-640 Exam Questions,70-640 Dumps PDF,Microsoft 70-640 Exam Dumps,70-640
Questions and Answers,TS: Windows Server 2008 Active Directory, Configuring

Compared Before Buying Microsoft 70-640 PDF &		
Pass4sure	Braindump2go	
	100% Pass OR Money Back	
Not In Stock	651 Q&As	199 Q&
/	\$99.99	\$189.98
/	Coupon Code: BDNT2014	No Disc

QUESTION 241Your network contains an Active Directory domain.A user named User1 takes a leave of absence for one year.You need to restrict access to the User1 user account while User1 is away.What should you do? A. From the Default Domain Policy, modify the account lockout settings.B. From the Default Domain Controller Policy, modify the account lockout settings.C. From the properties of the user account, modify the Account options.D. From the properties of the user account, modify the Session settings. Answer: CExplanation:Account lockout settings deal with logon security, like how many times a wrong password can be entered before an account gets locked out, or after how many minutes a locked out user can try again.To really restrict access to the User1 account it has to be disabled, by modifying the account options.

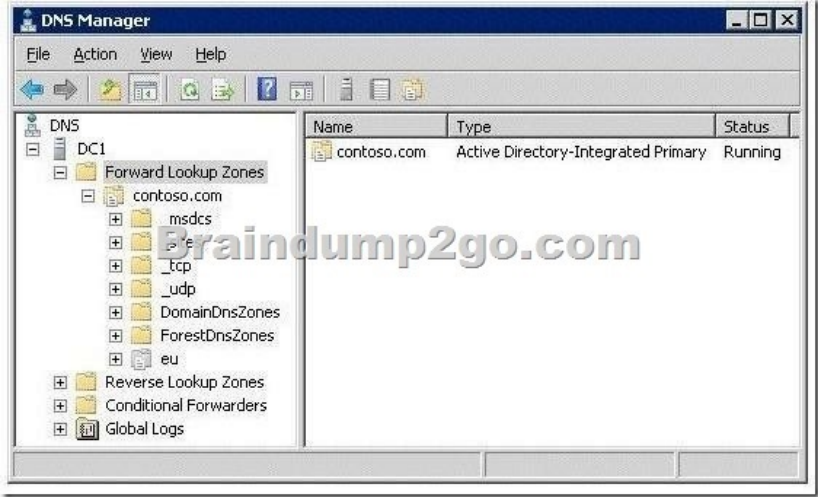
<http://blogs.technet.com/b/msonline/archive/2009/08/17/disabling-and-deleting-user-accounts.aspx>Disabling a user account prevents user access to e-mail and Microsoft SharePoint Online data, but retains the user's data. Disabling a user account also keeps the user license associated with that account. This is the best option to utilize when a person leaves an organization temporarily. QUESTION 242Your network contains an Active Directory domain. The domain contains 1,000 user accounts. You have a list that contains the mobile phone number of each user. You need to add the mobile number of each user to Active Directory. What should you do? A. Create a file that contains the mobile phone numbers, and then run ldidfde.exe.B. Create a file that contains the mobile phone numbers, and then run csvde.exe.C. From Adsiedit, select the CN=Users container, and then modify the properties of the container.D. From Active Directory Users and Computers, select all of the users, and then modify the properties of the users. Answer: AExplanation:CSVDE can only import and export data from AD DS.

<http://technet.microsoft.com/en-us/library/cc732101.aspx><http://technet.microsoft.com/en-us/library/cc731033.aspx> QUESTION 243 Your network contains an Active Directory domain named contoso.com. All domain controllers and member servers run Windows Server 2008. All client computers run Windows 7.From a client computer, you create an audit policy by using the Advanced Audit Policy Configuration settings in the Default Domain Policy Group Policy object (GPO). You discover that the audit policy is not applied to the member servers. The audit policy is applied to the client computers.You need to ensure that the audit policy is applied to all member servers and all client computers. What should you do? A. Add a WMI filter to the Default Domain Policy GPO.B. Modify the security settings of the Default Domain Policy GPO.C. Configure a startup script that runs auditpol.exe on the member servers.D. Configure a startup script that runs auditpol.exe on the domain controllers. Answer: C QUESTION 244Your company uses an application that stores data in an Active Directory Lightweight Directory Services (AD LDS) instance named Instance1. You attempt to create a snapshot of Instance1 as shown in the exhibit. (Click the Exhibit button.)You need to ensure that you can take a snapshot of Instance1. What should you do?



A. At the command prompt, run net start VSS.B. At the command prompt, run net start Instance1.C. Set the Startup Type for the Instance1 service to Disabled.D. Set the Startup Type for the Volume Shadow Copy Service (VSS) to Manual. Answer: A
Explanation: Hard to find references on this, but the solution can be found by eliminating the rest. Instance1 is running, otherwise you'd get a different message at the snapshot: create step. ("AD service must be running in order to perform this operation", on my virtual server.) Disabling Instance1 makes no sense because you need it, nor is setting the Startup Type for the Volume Shadow Copy Service (VSS) to Manual. QUESTION 245 Your network contains an Active Directory domain. The domain contains a group named Group1. The minimum password length for the domain is set to six characters. You need to ensure that the passwords for all users in Group1 are at least 10 characters long. All other users must be able to use passwords that are six characters long. What should you do first? A. Run the New-ADFineGrainedPasswordPolicy cmdlet.B. Run the Add-ADFineGrainedPasswordPolicySubject cmdlet.C. From the Default Domain Policy, modify the password policy.D. From the Default Domain Controller Policy, modify the password policy. Answer: A
Explanation: First we need to create a new Active Directory fine grained password policy, using New-ADFineGrainedPasswordPolicy. Then we can apply the new policy to Group1, using Add-ADFineGrainedPasswordPolicySubject. <http://technet.microsoft.com/en-us/library/ee617238.aspx>
New-ADFineGrainedPasswordPolicy Creates a new Active Directory fine grained password policy. QUESTION 246 Your network contains 10 domain controllers that run Windows Server 2008 R2. The network contains a member server that is configured to collect all of the events that occur on the domain controllers. You need to ensure that administrators are notified when a specific event occurs on any of the domain controllers. You want to achieve this goal by using the minimum amount of administrative effort. What should you do? A. From Event Viewer on the member server, create a subscription.B. From Event Viewer on each domain controller, create a subscription.C. From Event Viewer on the member server, run the Create Basic Task Wizard.D. From Event Viewer on each domain controller, run the Create Basic Task Wizard. Answer: C
Explanation: Since the member server is collecting all domain controller events we just need to run the Create Basic Task Wizard on the member server, which enables us to send an e-mail when a specific event is logged. Running the wizard on every domain controller would work, but is much more work and we need to use the minimum amount of administrative effort. <http://technet.microsoft.com/en-us/library/cc748900.aspx> QUESTION 247 Your network contains an Active Directory domain controller named DC1. DC1 runs Windows Server 2008 R2. You need to defragment the Active Directory database on DC1. The solution must minimize downtime on DC1. What should you do first? A. At the command prompt, run net stop ntds.B. At the command prompt, run net stop netlogon.C. Restart DC1 in Safe Mode.D. Restart DC1 in Directory Services Restore Mode (DSRM). Answer: A
Explanation: We don't need to restart the server to defragment the AD database. We only need to stop AD DS in order to defragment the database, using ntdsutil. <http://technet.microsoft.com/en-us/library/cc794920.aspx> QUESTION 248 Your network contains a single Active Directory domain named contoso.com. An administrator accidentally deletes the _msdsc.contoso.com zone. You recreate the _msdsc.contoso.com zone. You need to ensure that the _msdsc.contoso.com zone contains all of the required DNS records. What should you do on each domain controller? A. Restart the Netlogon service.B. Restart the DNS Server service.C. Run dcdiag.exe /fix.D. Run ipconfig.exe /registerdns. Answer: A
Explanation: <http://support.microsoft.com/kb/817470> QUESTION 249 Your network contains an Active Directory-integrated zone. All DNS servers that host the zone are domain controllers. You add multiple DNS records to the zone. You need to ensure that the records are replicated to all DNS servers. Which tool should you use? A. Dnslint.B. Ldp.C. Nslookup.D. Repadmin Answer: D
Explanation: To make sure that the new DNS records are replicated to all DNS servers we can

use the repadmin tool.<http://technet.microsoft.com/en-us/library/cc811569.aspx> QUESTION 250Your network contains an Active Directory forest. The forest contains two domains named contoso.com and eu.contoso.com. All domain controllers are DNS servers. The domain controllers in contoso.com host the zone for contoso.com. The domain controllers in eu.contoso.com host the zone for eu.contoso.com. The DNS zone for contoso.com is configured as shown in the exhibit. (Click the Exhibit button.)You need to ensure that all domain controllers in the forest host a writable copy of _msdsc.contoso.com. Which two actions should you perform? (Each correct answer presents part of the solution. Choose two.)



- A. Create a zone delegation record in the contoso.com zone.
B. Create a zone delegation record in the eu.contoso.com zone.
C. Create an Active Directory-integrated zone for _msdsc.contoso.com.
D. Create a secondary zone named _msdsc.contoso.com in eu.contoso.com.
- Answer: AC
Explanation: Note that the question speaks of _msdSC, instead of _msdCS. Not sure if it means something, probably a typo. Braindump2go Guarantee: Pass-Certification 70-640 offers absolute risk free investment opportunity, values your time and money! Braindump2go latest 70-640 Real Exam Dumps - Your success in 70-640 Exam is certain! Your belief in our 70-640 Exam Dumps is further strengthened with 100% Money Back Promise from Braindump2go!

Compared Before Buying M	
Pass4sure	Brain
Not In Stock	100% Pas
/	651 Q&As
/	\$99.99
/	Coupon Cod

<http://www.braindump2go.com/70-640.html>