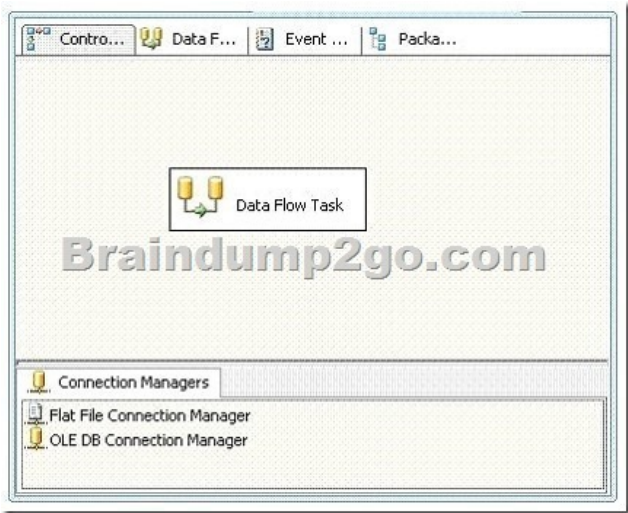


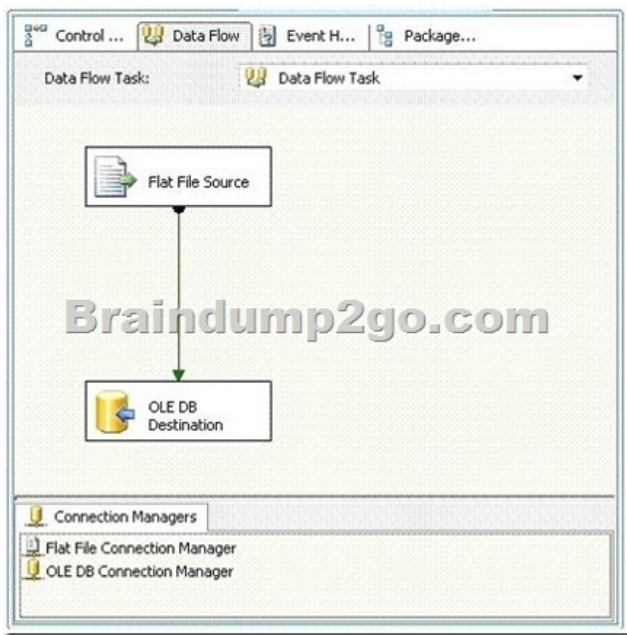
Latest Microsoft 70-448 Exam Questions - Download From Braindump2go Promise Pass 100% OR Money Back! (281-290)

2015 Latest released Microsoft Official 70-448 Practice Exam Question Free Download From Braindump2go Now! All New Updated 352 Questions And Answers are Real Questions from Microsoft Exam Center! Exam Code: 70-448Exam Name: Microsoft SQL Server 2008, Business Intelligence Development and MaintenanceCertification Provider: MicrosoftCorresponding Certifications: MCITP: Business Intelligence Developer 2008, MCSA, MCSA: SQL Server 2008, MCTS, MCTS: Microsoft SQL Server 2008, Business Intelligence Development and MaintenanceKeywords: 70-448 Exam Dumps,70-448 Practice Tests,70-448 Practice Exams,70-448 Exam Questions,70-448 PDF,70-448 VCE Free,70-448 Book,70-448 E-Book,70-448 Study Guide,70-448 Braindump,70-448 Prep Guide

Compared Before Buying Microsoft 70-448 PDF & VCE!		
Pass4sure	Braindump2go	Test King
	100% Pass OR Money Back	
332 Q&As - Practice	352 Q&As – Real Questions	332 Q&As - Practice
\$125.99	\$99.99	\$124.99
No Discount	Coupon Code: BDNT2014	No Discount

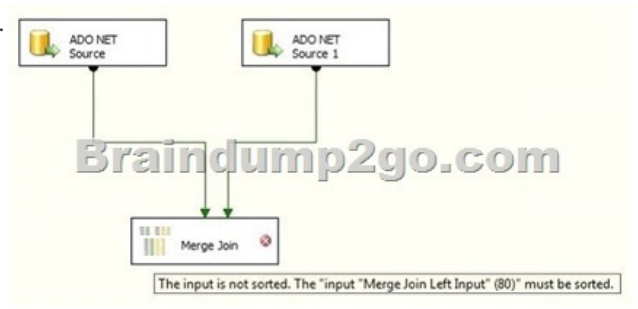
QUESTION 281You implement a SQL Server 2008 Integration Services (SSIS) package.The package contains the following components:- A data flow task contained in a For Loop container- A Flat File destination component that uses a Flat File connection manager -An OnError event handlerWhen an error occurs in the package, you plan to write diagnostic information from an expression that includes the version of the package to a text file.You need to ensure that the required information is written to the text file.What should you do? A. Use the VersionGUID variable.B. Use the ExecutionGUID variable.C. Use the SourceID variable.D. Use the TaskID variable. Answer: A QUESTION 282You modify a SQL Server 2008 Integration Services (SSIS) package.The package extracts data from a text file and loads this data to a SQL Server 2008 table as shown in the following two exhibits.





You need to update the package to extract data from multiple text files of the same directory. Which three actions should you perform? (Each correct answer presents part of the solution. Choose three.) A. Add a variable to the package. B. Add a variable to the data flow task. C. Add a Foreach Loop container to the package. D. Add a For Loop container to the package. E. Add an expression to the Flat File Source component. F. Add an expression to the Flat File connection manager. Answer: ACF

QUESTION 283 You are developing a SQL Server 2008 Integration Services (SSIS) data flow that extracts data from two sources. Each source database is located on a different server. Each source is based on a SELECT statement that uses an ORDER BY clause. The data flow is as shown in the following diagram.



When the paths from the two sources are connected to a Merge Join component, the following error message is displayed: "Data Flow Task: The input is not sorted. The 'input "Merge Join Left Input" (80)' must be sorted." You need to ensure that data from each query is included in each row in the data flow. You want to achieve this goal by using minimum amount of execution time. What should you do? A. Add a Sort transformation for each data flow. B. Add an OLE DB Command transformation for each data flow. C. Update the sorting properties in each source component. D. Replace the Merge Join transformation with a Union All transformation. Answer: C

QUESTION 284 You are developing a SQL Server 2008 Integration Services (SSIS) package. The package uses an OLE DB connection manager to connect to a third-party database server. The database does not support Integrated Windows authentication. You create an XML configuration file that provides configuration for the connection manager. You add the configuration file to the package. When the package executes, you receive an error message which indicates that login failure occurred. You need to execute the package successfully. What should you do? A. Edit the XML configuration file. B. Use an indirect XML configuration. C. Run the package on the same server as the third-party database server. D. Use a Microsoft ADO.NET connection manager instead of an OLE DB connection manager. Answer: A

QUESTION 285 You create a SQL Server 2008 Reporting Services (SSRS) report. You plan to create a list of customers by using a List control. For each customer in the List control, you plan to include a table that contains the orders for that customer. The customer data is stored in the Customers table in the data source, and the order data is stored in the Orders table. You need to define the required dataset or datasets for this report. What should you do? A. Create a query that joins the two tables in the data source by using the JOIN clause. Add the query as a

single data set to the report.B. Create a query that combines the two tables in the data source by using the UNION operator. Add the query as a single data set to the report.C. Create a query for each table. Group both tables on the column that is used to join the tables. Add both queries as separate data sets to the report.D. Create a query for each table. Sort both tables on the column that is used to join the tables. Add both queries as separate data sets to the report. Answer: A QUESTION 286You create a SQL Server 2008 Reporting Services (SSRS) report.The report contains a table.You need to ensure that alternate rows in the table have a pale green background.Which code segment should you use for each text box? A. =iif(LineNumber(Nothing) / 2, "PaleGreen", "White")B. =iif(LineNumber(Nothing) Mod 2, "PaleGreen", "White")C. =iif(CountRows() / 2, "PaleGreen", "White")D. =iif(CountRows() Mod 2, "PaleGreen", "White") Answer: B QUESTION 287You develop a SQL Server 2008 Reporting Services (SSRS) report.A Multidimensional Expressions (MDX) query used in the report contains a parameter to display sales data for various product categories. You write the following query. You discover that the query generates an error when executed.You need to ensure that the query executes successfully.What should you do? A. Remove the NON EMPTY clauses.B. Replace the CHAPTERS axis with the ROWS axis.C. Replace the CHAPTERS axis with the SECTIONS axis.D. Rewrite the query to display the Order Quantity on the COLUMNS axis, the Calendar Year on the ROWS axis, and the Category data on the PAGES axis. Answer: B QUESTION 288You design a report by using SQL Server 2008 Reporting Services (SSRS).The report uses a Table data region and contains a dataset. The dataset has a column named LastName.You need to ensure that the report items are grouped by the first character in the LastName column.Which expression in the Group properties dialog box should you use? A. =First(Fields!LastName)B. =Fields!LastName.ValueC. =First(Fields!LastName.Value)D. =Fields!LastName.Value.Substring(0,1) Answer: D QUESTION 289You create a report in SQL Server 2008 Reporting Services (SSRS) solution. You write the following code segment in the report.

```
Private Shared Function GetCmFromInches(ByVal InchValue As Decimal) As Decimal
    If IsNothing(InchValue) Then
        Return Nothing
    Else
        Return InchValue * 2.54
    End If
End Function
```

The code segment generates errors when compiled.You need to ensure that the following requirements are met:What should you do? A. Remove the Private keyword from the function definition.B. Remove the Shared keyword from the function definition.C. Declare the function as Public Shared instead of Private Shared.D. Create a custom assembly by using Microsoft Visual Basic .NET. Declare the function as Public Shared. Answer: D QUESTION 290You develop a SQL Server 2008 Reporting Services (SSRS) solution.You add a report that contains a single dataset and a query parameter.You need to ensure that the report executes without user interaction from the Report Manager.What should you do? A. Configure the report to use snapshot execution.B. Configure available values for the parameter from the dataset.C. Configure the default value for the parameter based on an expression.D. Configure the parameter data to refresh whenever the parameter is refreshed. Answer: C Braindump2go New Updated 70-448 Exam Dumps are Complete Microsoft 70-448 Course Coverage! 100% Real Questions and Correct Answers Guaranteed! Updated 70-448 Preparation Material with Questions and Answers PDF Instant Download:

Compared Before Buying Microsoft 70-448

Pass4sure	Braindump2go
	100% Pass Guarantee
332 Q&As - Practice	352 Q&As - Real Questions
\$125.99	\$99.99
No Discount	Coupon Code: WELCOME2024

<http://www.braindump2go.com/70-448.html>