

[May-2020-New300-730 PDF Dumps are Free Shared by Braindump2go[21-36]

May/2020 New Braindump2go 300-730 Exam Dumps with PDF and VCE Free Updated Today! Following are some new 300-730 Real Exam Questions, QUESTION 21 On a FlexVPN hub-and-spoke topology where spoke-to-spoke tunnels are not allowed, which command is needed for the hub to be able to terminate FlexVPN tunnels? A. interface virtual-access B. ip nhrp redirect C. interface tunnel D. interface virtual-template Answer: D QUESTION 22 Which statement about GETVPN is true? A. The configuration that defines which traffic to encrypt originates from the key server. B. TEK rekeys can be load-balanced between two key servers operating in COOP. C. The pseudotime that is used for replay checking is synchronized via NTP. D. Group members must acknowledge all KEK and TEK rekeys, regardless of configuration. Answer: A QUESTION 23 Refer to the exhibit. Which two tunnel types produce the show crypto ipsec sa output seen in the exhibit? (Choose two.)

```
interface: Tunnel1
Crypto map tag: Tunnel1-head-0, local addr 192.168.0.1

protected vrf: (none)
local ident (addr/mask/prot/port): (0.0.0.0/0.0.0.0/0/0)
remote ident (addr/mask/prot/port): (0.0.0.0/0.0.0.0/0/0)
current_peer 192.168.0.2 port 500
PERMIT, flags=(origin_is_acl,)
#pkts encaps: 0, #pkts encrypt: 0, #pkts digest: 0
#pkts decap: 0, #pkts decrypt: 0, #pkts verify: 0
#pkts compressed: 0, #pkts decompressed: 0
#pkts not compressed: 0, #pkts compr. failed: 0
#pkts not decompressed: 0, #pkts decompress failed: 0
#send errors 0, #recv errors 0

local crypto endpt.: 192.168.0.1, remote crypto endpt.: 192.
plaintext mtu 1438, path mtu 1500, ip mtu 1500, ip idb G
current outbound spi: 0x3D05D003(1023791107)
PFS (Y/N): N, DH group: none
```

A. crypto map B. DMVPN C. GRE D. FlexVPN E. VTI Answer: BE QUESTION 24 Which two changes must be made in order to migrate from DMVPN Phase 2 to Phase 3 when EIGRP is configured? (Choose two.) A. Add NHRP shortcuts on the hub. B. Add NHRP redirects on the spoke. C. Disable EIGRP next-hop-self on the hub. D. Enable EIGRP next-hop-self on the hub. E. Add NHRP redirects on the hub. Answer: CE QUESTION 25 Refer to the exhibit. A customer cannot establish an IKEv2 site-to-site VPN tunnel between two Cisco ASA devices. Based on the syslog message, which action brings up the VPN tunnel?

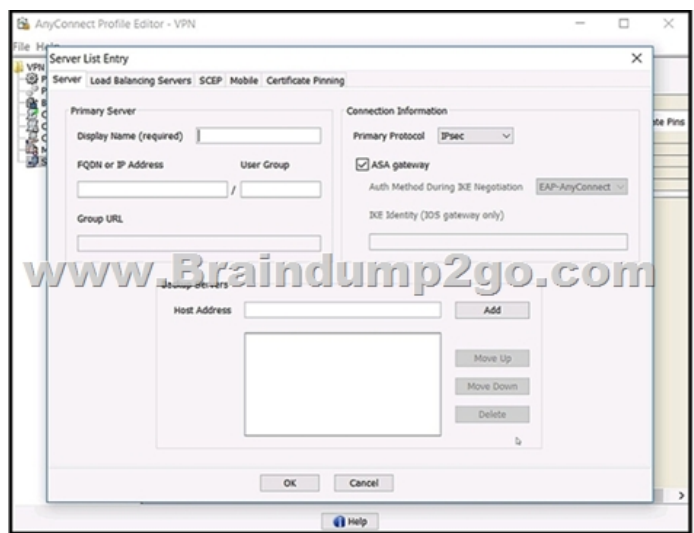
```
AAA-15/01/2006 10:00:00
rejected by ACL: reason:
```

A. Reduce the maximum SA limit on the local Cisco ASA. B. Increase the maximum in-negotiation SA limit on the local Cisco ASA. C. Remove the maximum SA limit on the remote Cisco ASA. D. Correct the crypto access list on both Cisco ASA devices. Answer: B QUESTION 26 Refer to the exhibit. Which action is demonstrated by this debug output? A. NHRP initial registration by a spoke. B. NHRP registration acknowledgement by the hub. C. Disabling of the DMVPN tunnel interface. D. IPsec ISAKMP phase 1 negotiation. Answer: A QUESTION 27 Which is used by GETVPN, FlexVPN and DMVPN? A. NHRP B. MPLS C. GRE D. ESP Answer: D QUESTION 28 Which IKEv2 feature minimizes the configuration of a FlexVPN on Cisco IOS devices? A. IKEv2 Suite-B B. IKEv2 proposals C. IKEv2 profiles D. IKEv2 Smart Defaults Answer: D QUESTION 29 Which two parameters help to map a VPN session to a tunnel group without using the tunnel-group list? (Choose two.) A. group-alias B. certificate map C. optimal gateway selection D. group-url E. AnyConnect client version Answer: BD QUESTION 30 Which method dynamically installs the network routes for remote tunnel endpoints? A. policy-based routing B. CEFC. reverse route injection D. route filtering Answer: C Explanation:

https://www.cisco.com/c/en/us/td/docs/ios-xml/ios/sec_conn_vpnav/configuration/12-4t/sec-vpn-availability-12-4t-book/sec-rev-rte-inject.html QUESTION 31 Which command identifies a Cisco AnyConnect profile that was uploaded to the flash of an IOS router? A.

svc import profile SSL_profile flash:simos-profile.xml B. anyconnect profile SSL_profile flash:simos-profile.xml C. crypto vpn anyconnect profile SSL_profile flash:simos-profile.xml D. webvpn import profile SSL_profile flash:simos-profile.xml Answer: C Explanation:

<https://www.cisco.com/c/en/us/support/docs/security/anyconnect-secure-mobility-client/200533-AnyConnect-Configure-Basic-SSL-VPN-for-I.html> QUESTION 32 Refer to the exhibit. Which value must be configured in the User Group field when the Cisco AnyConnect Profile is created to connect to an ASA headend with IPsec as the primary protocol?



A. address-poolB. group-aliasC. group-policyD. tunnel-groupAnswer: DExplanation:

https://www.cisco.com/c/en/us/td/docs/security/vpn_client/anyconnect/anyconnect41/administration/guide/b_AnyConnect_Administrator_Guide_4-1/configure-vpn.htmlQUESTION 33Refer to the exhibit. What is configured as a result of this command set?

```
aaa new-model
!
aaa authorization
!
crypto pki trustpoint
enrollment url
revocation-check
!
crypto pki certificate
subject-name
!
crypto ikev2
!
ipv6 pool v6
ipv6 dns 2001:
ipv6 subnet-2
!
crypto ikev2
match certificate
authentication
authentication
pki trustpoint
aaa authorization
!
virtual-template
!
crypto ipsec
!
crypto ipsec
set transform
set ikev2-pro
!
interface Ethernet
ipv6 address
!
interface Virtual
ipv6 unnumbered
tunnel mode
tunnel protect
!
ipv6 local pool
!
ipv6 access-list
permit ipv6
permit ipv6
```

A. FlexVPN client profile for IPv6B. FlexVPN server to authorize groups by using an IPv6 external AAAAC. FlexVPN server for an IPv6 dVTI sessionD. FlexVPN server to authenticate IPv6 peers by using EAPAnswer: AExplanation:

https://www.cisco.com/c/en/us/td/docs/ios-xml/ios/sec_conn_ike2vpn/configuration/xr-3s/sec-flex-vpn-xr-3s-book/sec-cfg-flex-clnt.htmlQUESTION 34Which two types of web resources or protocols are enabled by default on the Cisco ASA Clientless SSL VPN portal? (Choose two.)A. HTTPB. ICA (Citrix)C. VNCD. RDPE. CIFSAnswer: DEExplanation:

<https://www.cisco.com/c/en/us/td/docs/security/asa/asa94/config-guides/cli/vpn/asa-94-vpn-config/webvpn-configure-gateway.html>

QUESTION 35 Which configuration construct must be used in a FlexVPN tunnel?
A. EAP configuration
B. multipoint GRE tunnel interface
C. IKEv1 policy
D. IKEv2 profile
Answer: D
QUESTION 36 A Cisco AnyConnect client establishes a SSL VPN connection with an ASA at the corporate office. An engineer must ensure that the client computer meets the enterprise security policy. Which feature can update the client to meet an enterprise security policy?
A. Endpoint Assessment
B. Cisco Secure Desktop
C. Basic Host Scan
D. Advanced Endpoint Assessment
Answer: D
Resources From: 1. 2020 Latest Braindump2go 300-730 Exam Dumps (PDF & VCE) Free Share: <https://www.braindump2go.com/300-730.html>
2. 2020 Latest Braindump2go 300-730 PDF and 300-730 VCE Dumps Free Share:

https://drive.google.com/drive/folders/1zBS7xcmszvPHlrS_IPaM4uUF1VvomE4a?usp=sharing
3. 2020 Free Braindump2go 300-730 PDF Download: [https://www.braindump2go.com/free-online-pdf/300-730-Dumps\(34-44\).pdf](https://www.braindump2go.com/free-online-pdf/300-730-Dumps(34-44).pdf)

[https://www.braindump2go.com/free-online-pdf/300-730-PDF\(23-33\).pdf](https://www.braindump2go.com/free-online-pdf/300-730-PDF(23-33).pdf)

[https://www.braindump2go.com/free-online-pdf/300-730-PDF-Dumps\(1-11\).pdf](https://www.braindump2go.com/free-online-pdf/300-730-PDF-Dumps(1-11).pdf)

[https://www.braindump2go.com/free-online-pdf/300-730-VCE\(12-22\).pdf](https://www.braindump2go.com/free-online-pdf/300-730-VCE(12-22).pdf)

[https://www.braindump2go.com/free-online-pdf/300-730-VCE-Dumps\(45-55\).pdf](https://www.braindump2go.com/free-online-pdf/300-730-VCE-Dumps(45-55).pdf)
Free Resources from Braindump2go, We Devoted to Helping You 100% Pass All Exams!