


Microsoft 70-411 Latest Important Questions with Answers and Explanation Shared By Braindump2go (171-180)

MICROSOFT OFFICIAL: New Updated 70-411 Exam Questions from Braindump2go 70-411 PDF Dumps and 70-411 VCE Dumps! Welcome to Download the Newest Braindump2go 70-411 VCE&PDF Dumps:
<http://www.braindump2go.com/70-411.html> (322 Q&As) Latest 70-411 PDF Dumps and 70-411 VCE Dumps can be downloaded from Braindump2go Now! This New Updated 70-411 Exam Dumps has 322q in all! All Braindump2go 70-411 Exam Questions and Answers are formulated and verified by experienced IT professionals! We guarantee all of you can pass 70-411 Exam successfully! Exam Code: 70-411 Exam Name Administering Windows Server 2012 Certification Provider: Microsoft Corresponding Certifications: MCSA, MCSA: Windows Server 2012, MCSE, MCSE: Desktop Infrastructure, MCSE: Private Cloud, MCSE: Server Infrastructure Keywords: 70-411 Dumps, 70-411 Microsoft Exam Questions, 70-411 VCE, 70-411 PDF, 70-411 Practice Exams, 70-411 Practice Tests, 70-411 Book, 70-411 Study Guide

Administering Windows Server 2012 R2 Exam: 70-411



Product Description Exam Number/Code: 70-411

Exam Number/Code: 70-411

"Administering Windows Server 2012 R2 Exam", also known as 70-411 exam, is a Microsoft Certification. With the complete collection of questions and answers, Braindump2go has assembled to take you through 322 Q&As to your 70-411 Exam preparation. In the 70-411 exam resources, you will cover every field and category in Microsoft MCSA helping to ready you for your successful Microsoft Certification.

Questions and Answers : 322 Q&As

Updated: Sep 14, 2015

~~\$420.00~~ **\$99.99**

[PDF DEMO](#)

[CHECK OUT](#)

Free Demo Download

Braindump2go offers free demo for 70-411 exam (Administering Windows Server 2012 R2 Exam). You can check out the interface, question quality and usability of our practice exams before you decide to buy it.

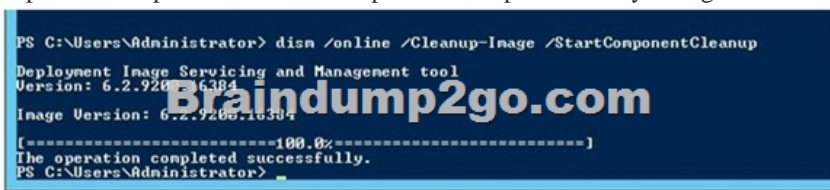
☒ **Printable PDF** ☒ **Premium VCE + VCE Simulator**

QUESTION 171 Your network contains an Active Directory domain named contoso.com. The domain contains two servers named Server1 and Server2. Both servers run Windows Server 2012 R2. Both servers have the File and Storage Services server role, the DFS Namespaces role service, and the DFS Replication role service installed. Server1 and Server2 are part of a Distributed File System (DFS) Replication group named Group1. Server1 and Server2 are connected by using a high-speed LAN connection. You need to minimize the amount of processor resources consumed by DFS Replication. What should you do? A. Reduce the bandwidth usage. B. Disable Remote Differential Compression (RDC). C. Modify the staging quota. D. Modify the replication schedule. Answer: B Explanation: Because disabling RDC can help conserve disk input/output (I/O) and CPU resources, you might want to disable RDC on a connection if the sending and receiving members are in a local area network (LAN), and bandwidth use is not a concern. However, in a LAN environment where bandwidth is contended, RDC can be beneficial when transferring large files. Question tells it uses a high-speed LAN connection. <http://technet.microsoft.com/en-us/library/cc758825%28v=ws.10%29.aspx> <http://technet.microsoft.com/en-us/library/cc754229.aspx> QUESTION 172 Your company has a main office and two branch offices. The main office is located in New York. The branch offices are located in Seattle and Chicago. The network contains an Active Directory domain named contoso.com. An Active Directory site exists for each office. Active Directory site links exist between the main office and the branch offices. All servers run Windows Server 2012 R2. The domain contains three file servers. The file servers are configured as shown in the following table.

Server name	Server location
NYC-SVR1	New York office
SEA-SVR1	Seattle office
CHI-SVR1	Chicago office

You implement a Distributed File System (DFS) replication group named Rep1Group. Rep1Group is used to replicate a folder on each file server. Rep1Group uses a hub and spoke topology. NYC-SVR1 is configured as the hub server. You need to ensure that replication can occur if NYC-SVR1 fails. What should you do? A. Create an Active Directory site link. B. Modify the properties of Rep1Group. C. Create an Active Directory site link bridge. D. Create a connection in Rep1Group. Answer: D Explanation: <http://faultbucket.ca/2012/08/fixing-a-dfsr-connection-problem/> <http://faultbucket.ca/2012/08/fixing-a-dfsr-connection-problem/> <http://technet.microsoft.com/en-us/library/cc771941.aspx> QUESTION 173 You have a server named Server1 that runs Windows Server 2012 R2. You plan to create an image of Server1. You need to remove the source files for all server roles that are not

installed on Server1. Which tool should you use? A. Ocsetup.exe B. Servermanagercmd.exe C. ImageX.exe D. Dism.exe
Answer: D
Explanation: servermanagercmd.exe - The ServerManagerCmd.exe command-line tool has been deprecated in Windows Server 2008 R2. imageX.exe - ImageX is a command-line tool in Windows Vista that you can use to create and manage Windows image (.wim) files. A .wim file contains one or more volume images, disk volumes that contain images of an installed Windows operating system. dism.exe - Deployment Image Servicing and Management (DISM.exe) is a command-line tool that can be used to service a Windows image or to prepare a Windows Preinstallation Environment (Windows PE) image. It replaces Package Manager (Pkgmgr.exe), PEimg, and Intlcfg that were included in Windows Vista. The functionality that was included in these tools is now consolidated in one tool (DISM.exe), and new functionality has been added to improve the experience for offline servicing. DISM can Add, remove, and enumerate packages. ocsetup.exe - The Ocsetup.exe tool is used as a wrapper for Package Manager (Pkgmgr.exe) and for Windows Installer (Msiexec.exe). Ocsetup.exe is a command-line utility that can be used to perform scripted installs and scripted uninstalls of Windows optional components. The Ocsetup.exe tool replaces the Sysocmgr.exe tool that Windows XP and Windows Server 2003 use.



<http://technet.microsoft.com/en-us/library/hh824822.aspx>

<http://blogs.technet.com/b/joscon/archive/2010/08/26/adding-features-with-dism.aspx>

<http://technet.microsoft.com/en-us/library/hh831809.aspx> <http://technet.microsoft.com/en-us/library/hh825265.aspx> QUESTION

174 Your domain contains a Windows 8 computer named Computer1 using BitLocker. The E: drive is encrypted and currently locked. You need to unlock the E: drive with the recovery key stored on C: What should you run? A. Unlock-BitLocker B.

Suspend-BitLocker C. Enable-BitLockerAutoUnloc D. Disable-BitLocker
Answer: A
Explanation: A. Restores access to data on a BitLocker volume.

[http://technet.microsoft.com/en-us/library/jj649833\(v=wps.620\).aspx](http://technet.microsoft.com/en-us/library/jj649833(v=wps.620).aspx) QUESTION 175 Your network contains an active Directory domain named contoso.com. The domain contains a server named Server1 that runs Windows Server 2012 R2. A local account named Admin1 is a member of the Administrators group on Server1. You need to generate an audit event whenever Admin1 is denied access to a file or folder. What should you run? A. auditpol.exe /set /user:admin1 /category:"detailed tracking" /failure:enable B.

auditpol.exe /set /user:admin1 /failure:enable C. auditpol.exe /resourcesacl /set /type:keyauditpol.exe

/resourcesacl /set /type: /access:ga D. auditpol.exe /resourcesacl /set /type:file /user:admin1 /failure

Answer: D
Explanation:

<http://technet.microsoft.com/en-us/library/ff625687.aspx> set a global resource SACL to audit successful and failed attempts by a

user to perform generic read and write functions on files or folders: auditpol /resourceSACL /set /type:File

/user:MYDOMAINmyuser /success /failure /access:FRFW

<http://technet.microsoft.com/en-us/library/ff625687%28v=ws.10%29.aspx> Syntax auditpol /resourceSACL [/set /type:<resource>

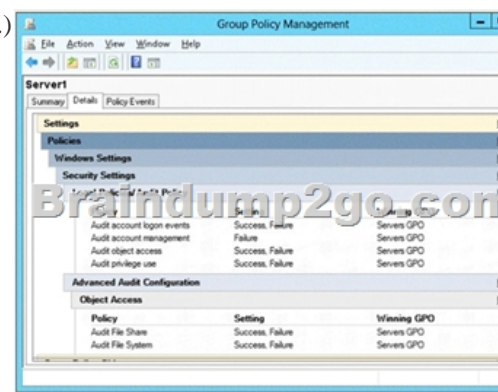
[/success] [/failure] /user:<user> [/access:<access flags>] [/remove /type:<resource> /user:<user> [/type:<resource>]] [/clear

[/type:<resource>]] [/view [/user:<user>] [/type:<resource>]]

<http://technet.microsoft.com/en-us/library/ff625687%28v=ws.10%29.aspx>

<http://technet.microsoft.com/en-us/library/ff625687%28v=ws.10%29.aspx> <http://technet.microsoft.com/en-us/library/ff625687.aspx>

<http://technet.microsoft.com/en-us/library/ff625687%28v=ws.10%29.aspx> QUESTION 176 Your network contains an Active Directory domain named contoso.com. The domain contains a file server named Server1 that runs Windows Server 2012 R2. You view the effective policy settings of Server1 as shown in the exhibit. (Click the Exhibit button.)

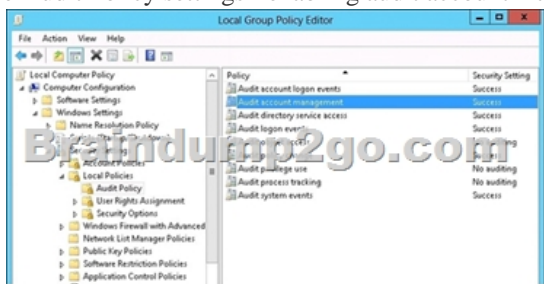


You need to ensure that an entry is added to the event log whenever a local user account is created or deleted on Server1. What should you do? A. In Servers GPO, modify the Advanced Audit Configuration settings. B. On Server1, attach a task to the security log. C. In Servers GPO, modify the Audit Policy settings. D. On Server1, attach a task to the system log. Answer: A

Explanation: When you use Advanced Audit Policy Configuration settings, you need to confirm that these settings are not overwritten by basic audit policy settings. The following procedure shows how to prevent conflicts by blocking the application of any basic audit policy settings. Enabling Advanced Audit Policy Configuration Basic and advanced audit policy configurations should not be mixed. As such, it's best practice to enable Audit: Force audit policy subcategory settings (Windows Vista or later) to override audit policy category settings in Group Policy to make sure that basic auditing is disabled. The setting can be found under Computer Configuration Policies Security Settings Local Policies Security Options, and sets the SCENoApplyLegacyAuditPolicy registry key to prevent basic auditing being applied using Group Policy and the Local Security Policy MMC snap-in. In Windows 7 and Windows Server 2008 R2, the number of audit settings for which success and failure can be tracked has increased to 53. Previously, there were nine basic auditing settings under Computer Configuration Policies Windows Settings Security Settings Local Policies Audit Policy. These 53 new settings allow you to select only the behaviors that you want to monitor and exclude audit results for behaviors that are of little or no concern to you, or behaviors that create an excessive number of log entries. In addition, because Windows 7 and Windows Server 2008 R2 security audit policy can be applied by using domain Group Policy, audit policy settings can be modified, tested, and deployed to selected users and groups with relative simplicity. Audit Policy settings Any changes to user account and resource permissions. Any failed attempts for user logon. Any failed attempts for resource access. Any modification to the system files. Advanced Audit Configuration Settings Audit compliance with important business-related and security-related rules by tracking precisely defined activities, such as: A group administrator has modified settings or data on servers that contain finance information. An employee within a defined group has accessed an important file. The correct system access control list (SACL) is applied to every file and folder or registry key on a computer or file share as a verifiable safeguard against undetected access. In Servers GPO, modify the Audit Policy settings - enabling audit account management setting will generate events about account creation, deletion and so on. Advanced Audit Configuration Settings Advanced Audit Configuration Settings -> Audit Policy -> Account Management -> Audit User Account Management



In Servers GPO, modify the Audit Policy settings - enabling audit account management setting will generate events about account creation, deletion and so on.



<http://blogs.technet.com/b/abizerh/archive/2010/05/27/tracing-down-user-and-computer-account-deletion-in-active-directory.aspx>
<http://technet.microsoft.com/en-us/library/dd772623%28v=ws.10%29.aspx>
[http://technet.microsoft.com/en-us/library/jj852202\(v=ws.10\).aspx](http://technet.microsoft.com/en-us/library/jj852202(v=ws.10).aspx)
<http://www.petri.co.il/enable-advanced-audit-policy-configuration-windows-server.htm>


<http://technet.microsoft.com/en-us/library/dd408940%28v=ws.10%29.aspx>

http://technet.microsoft.com/en-us/library/dd408940%28v=ws.10%29.aspx#BKMK_step2 QUESTION 177 You have 3 server that runs Windows Server 2012 R2. The server contains the disks configured as shown in the following table.

Disk name	Partition table type	Disk storage type
Disk 0	GPT	Dynamic
Disk 1	MBR	Basic
Disk 2	GPT	Dynamic
Disk 3	GPT	Dynamic
Disk 4	MBR	Basic

You need to create a volume that can store up to 3 TB of user files. The solution must ensure that the user files are available if one of the disks in the volume fails. What should you create? A. A storage pool on Disk 2 and Disk 3B. A mirrored volume on Disk 2 and Disk 3C. A storage pool on Disk 1 and Disk 3D. A mirrored volume on Disk 1 and Disk 4E. Raid 5 Volume out of Disks 1, 2 and 3 Answer: B Explanation: A. Storage pool can't use Dynamic disk B. Mirrored volume will be > 3Tb C. Storage pool can't use Dynamic disk D. is impossible, we need 3Tb of disk space E. Raid5 need to be on dynamic disk QUESTION 178 You perform a Server Core Installation of Windows Server 2012 R2 on a server named Server1. You need to add a graphical user interface (GUI) to Server1. Which tool should you use? A. the Add-WindowsPackage cmdlet B. the Add-WindowsFeature cmdlet C. the Install-Module cmdlet D. the Install-RoleService cmdlet Answer: B QUESTION 179 Your network contains an Active Directory domain named contoso.com. The domain contains a Web server named www.contoso.com. The Web server is available on the Internet. You implement DirectAccess by using the default configuration. You need to ensure that users never attempt to connect to www.contoso.com by using DirectAccess. The solution must not prevent the users from using DirectAccess to access other resources in contoso.com. Which settings should you configure in a Group Policy object (GPO)? A. Name Resolution Policy B. DNS Client C. Network Connections D. DirectAccess Client Experience Settings Answer: A Explanation: For DirectAccess, the NRPT must be configured with the namespaces of your intranet with a leading dot (for example, .internal.contoso.com or .corp.contoso.com). For a DirectAccess client, any name request that matches one of these namespaces will be sent to the specified intranet Domain Name System (DNS) servers. Include all intranet DNS namespaces that you want DirectAccess client computers to access. There are no command line methods for configuring NRPT rules. You must use Group Policy settings. To configure the NRPT through Group Policy, use the Group Policy add-in at Computer Configuration Policies Windows Settings Name Resolution Policy in the Group Policy object for DirectAccess clients. You can create a new NRPT rule and edit or delete existing rules. For more information, see Configure the NRPT with Group Policy. QUESTION 180 You have a DNS server named Server1. Server1 has a primary zone named contoso.com. Zone Aging/ Scavenging is configured for the contoso.com zone. One month ago, an Administrator removed a server named Server2 from the network. You discover that a static resource record for Server2 is present in contoso.com. Resource records for decommissioned client computers are removed automatically from contoso.com. You need to ensure that the static resource records for all of the servers are removed automatically from contoso.com. What should you modify? A. The Security settings of the static resource records B. The Expires after value of contoso.com C. The Record time stamp value of the static resource records D. The time-to-live (TTL) value of the static resource records Answer: C Explanation: C. reset and permit them to use a current (non-zero) time stamp value. This enables these records to become aged and scavenged. D. For most resource records, this field is optional. It indicates a length of time used by other DNS servers to determine how long to cache information for a record before expiring and discarding it. <http://technet.microsoft.com/en-us/library/cc771677.aspx> [http://technet.microsoft.com/en-us/library/cc758321\(v=ws.10\).aspx](http://technet.microsoft.com/en-us/library/cc758321(v=ws.10).aspx) Latest 70-411 Questions and Answers from Microsoft Exam Center Offered by Braindump2go for Free Share Now! Read and remember all Real Questions Answers, Guaranteed Pass 70-411 Real Test 100% Or Full Money Back!

Administering Windows Server 2012 R2 Exam: 70-411



Product Description Exam Number/Code: 70-411

Exam Number/Code: 70-411

"Administering Windows Server 2012 R2 Exam", also known as 70-411 exam, is a Microsoft Certification. With the complete collection of questions and answers, Braindump2go has assembled to take you through 322 Q&As to your 70-411 Exam preparation. In the 70-411 exam resources, you will cover every field and category in Microsoft MCSA helping to ready you for your successful Microsoft Certification.

Questions and Answers : 322 Q&As
Updated: Sep 14, 2015
\$429.99 **\$99.99**

[PDF DEMO](#)

[CHECK OUT](#)

Free Demo Download

Braindump2go offers free demo for 70-411 exam (Administering Windows Server 2012 R2 Exam). You can check out the interface, question quality and usability of our practice exams before you decide to buy it.

[Printable PDF](#) [Premium VCE + VCE Simulator](#)

FREE DOWNLOAD: NEW UPDATED 70-411 PDF Dumps & VCE Dumps from Braindump2go:
<http://www.braindump2go.com/70-411.html> (322 Q&As)