


Microsoft 70-659 Exam Dumps From Braindump2go Covers The Latest Knowledge Points From Microsoft Exam Centre (41-50)

MICROSOFT NEWS: 70-659 Exam Questions has been Updated Today! Get Latest 70-659 VCE and 70-659 PDF Instantly!

Welcome to Download the Newest Braindump2go 70-659 VCE&70-659 PDF Dumps:

<http://www.braindump2go.com/70-659.html> (161 Q&As) 2015 New Updated 70-659 Exam Dumps Questions and Answers are all from Microsoft Official Exam Center! Some new questions added into this new released 70-659 Dumps! Download 70-659 Exam Dumps Full Version Now and Pass one time! Exam Code: 70-659 Exam Name: TS: Windows Server 2008 R2, Server Virtualization Certification Provider: Microsoft [70-659 Dumps](#), [70-659 Book](#), [70-659 Study Guide PDF](#), [70-659 eBook](#), [70-659 Braindump](#), [70-659 eBook](#), [70-659 Exam Questions](#), [70-659 Exam Prep](#), [70-659 Dumps PDF](#), [70-659 Dumps Free](#), [70-659 Latest Dumps](#), [70-659 Practice Exam](#), [70-659 Practice Questions](#), [70-659 PDF](#), [70-659 VCE](#)

TS: Windows Server 2008 R2, Server Virtualization: 70-659



Product Description Exam Number/Code: 70-659

Exam Number/Code: 70-659

"TS: Windows Server 2008 R2, Server Virtualization", also known as 70-659 exam, is a Microsoft Certification. With the complete collection of questions and answers, Braindump2go has assembled to take you through 161 Q&As to your 70-659 Exam preparation. In the 70-659 exam resources, you will cover every field and category in Microsoft MCITP helping to ready you for your successful Microsoft Certification.

Free Demo Download

Braindump2go offers free demo for 70-659 exam (TS: Windows Server 2008 R2, Server Virtualization). You can check out the interface, question quality and usability of our practice exams before you decide to buy it.

☒ **Printable PDF** ☒ **Premium VCE + VCE Simulator**

Questions and Answers : 161 Q&As

Updated: Dec 22, 2015

~~\$429.00~~ **\$99.99**

[PDF DEMO](#)

[CHECK OUT](#)

QUESTION 41 A company has a Windows Server 2008 R2 Hyper-V environment. The environment is managed with Microsoft System Center Virtual Machine Manager (VMM) 2008 R2. A virtual machine (VM) is a node in a Windows failover cluster. You need to add a new disk drive to the VM. The disk drive will be shared with all other nodes in the failover cluster. What should you do? A. Add a disk drive to the VM by using the Add-ClusterSharedVolume PowerShell cmdlet. B. Assign 1 GB of startup RAM and 8 GB of maximum RAM to the VM. C. Install the server application in a VM with the latest supported integration components. D. Add a disk drive to the VM by using the New-VirtualDiskDrive PowerShell cmdlet. E. Assign 4 GB of static memory to the VM. F. Add a synthetic network adapter to the VM and select the Enable virtual network optimizations option. G. Assign 1 GB of startup RAM and 4 GB of maximum RAM to the VM. H. Add an emulated network adapter to the VM and select the Enable spoofing of MAC addresses option. I. Install the server application on a physical server. J. Add a disk drive to the VM by using the iscsi.exe command line tool. K. Add an emulated network adapter to the VM and select the Enable virtual network optimizations option. L. Add a synthetic network adapter to the VM and select the Enable spoofing of MAC addresses option. Answer: J QUESTION 42 A company has an environment that includes servers that run Windows Server 2008 R2 with Hyper-V. The company requires that all server operating systems be provisioned as virtual machines (VMs). A server operating system should be provisioned as a physical server only if it does not function properly as a VM. A new application that runs a Hyper-V supported version of Linux requires four CPUs and access to 3 terabytes of storage. You need to install the application to meet the company requirements. What should you do? A. Install the server application on a physical server with four CPUs. B. Add a disk drive to the VM by using the iscsi.exe command line tool. C. Assign 4 GB of static memory to the VM. D. Add a synthetic network adapter to the VM and select the Enable virtual network optimizations option. E. Add an emulated network adapter to the VM and select the Enable virtual network optimizations option. F. Add an emulated network adapter to the VM and select the Enable spoofing of MAC addresses option. G. Add a disk drive to the VM by using the New-VirtualDiskDrive PowerShell cmdlet. H. Assign 1 GB of startup RAM and 8 GB of maximum RAM to the VM. I. Install the server application in a VM with the latest supported integration components. J. Add a synthetic network adapter to the VM and select the Enable spoofing of MAC addresses option. K. Add a disk drive to the VM by using the Add-SharedVirtualDiskDrive PowerShell cmdlet. L. Assign 1 GB of startup RAM and 16 GB of maximum RAM to the VM. M. Set the network adapter to use an iSCSI network tag. Answer: A Explanation: Answer changed 13/06/2012 FROM I to A To connect a 3TB storage the disk needs to be setup as a pass-through disk. None of the options allow for the addition of pass-through disk QUESTION 43 A company has a Windows Server 2008 R2 Hyper-V server

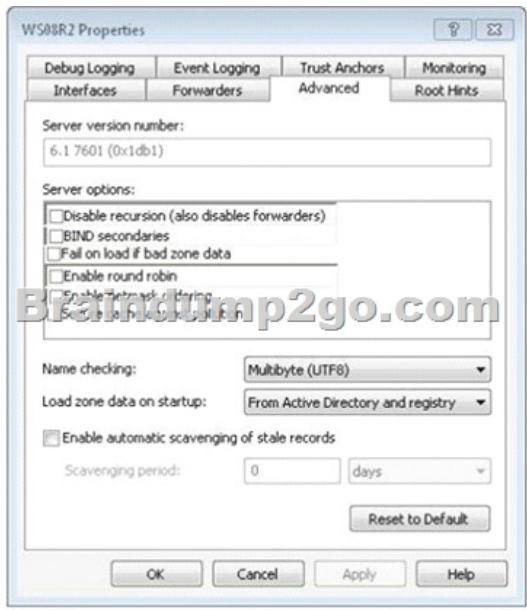
environment. The environment is managed with Microsoft System Center Virtual Machine Manager (VMM) 2008 R2. There is an existing 10 GB iSCSI storage area network (SAN). A logical unit number (LUN) will be mounted from the iSCSI SAN. The LUN will be used as a disk drive inside of a virtual machine (VM). The VM must meet the following requirements: You need to prepare the VM to support the LUN. What should you do? A. Add an emulated network adapter to the VM and select the Enable spoofing of MAC addresses option. B. Add a synthetic network adapter to the VM and select the Enable virtual network optimizations option. C. Add a disk drive to the VM by using the `iscsicli.exe` command line tool. D. Install the server application on a VM with the latest supported integration components. E. Add a disk drive to the VM by using the `New-VirtualDiskDrive` PowerShell cmdlet. F. Add a synthetic network adapter to the VM and select the Enable spoofing of MAC addresses option. G. Assign 1 GB of startup RAM and 4 GB of maximum RAM to the VM. H. Assign 1 GB of startup RAM and 8 GB of maximum RAM to the VM. I. Assign 4 GB of static memory to the VM. J. Install the server application on a physical server. K. Add an emulated network adapter to the VM and select the Enable virtual network optimizations option. L. Add a disk drive to the VM by using the `Add-ClusterSharedVolume` PowerShell cmdlet. Answer: B Explanation: Add a synthetic network adapter QUESTION 44 A company has a Windows Server 2008 R2 Hyper-V server environment. The environment is managed with Microsoft System Center Virtual Machine Manager (VMM) 2008 R2. The company requires that all server operating systems be provisioned as virtual machines (VMs). A server operating system should be provisioned as a physical server only if it does not function properly as a VM. You are preparing to deploy a VM that will run Windows Server 2008 R2 Standard. The VM will run a server application that has the following characteristics: YOU need to prepare the environment for the server application and ensure that application performance is maximized. What should you do? A. Add a disk drive to the VM by using the `New-VirtualDiskDrive` PowerShell cmdlet. B. Install the server application on a physical server. C. Add an emulated network adapter to the VM and select the Enable virtual network optimizations option. D. Add a synthetic network adapter to the VM and select the Enable spoofing of MAC addresses option. E. Add an emulated network adapter to the VM and select the Enable spoofing of MAC addresses option. F. Assign 1 GB of startup RAM and 8 GB of maximum RAM to the VM. G. Add a disk drive to the VM by using the `Add-ClusterSharedVolume` PowerShell cmdlet. H. Add a disk drive to the VM by using the `iscsicli.exe` command line tool. I. Install the server application in a VM with the latest supported integration components. J. Assign 1 GB of startup RAM and 4 GB of maximum RAM to the VM. K. Assign 4 GB of static memory to the VM. L. Add a synthetic network adapter to the VM and select the Enable virtual network optimizations option. Answer: I Explanation: Deploy a VM that will run Windows Server 2008 R2 Std, the VM will run server application that has- Min 512Mb RAM- Consume 8Gb memory- Network speeds > 10Gbps Install the server application in a VM with the latest supported integration components. QUESTION 45 All servers on your network run Windows Server 2008 R2. You deploy Remote Desktop Services (RDS). You are configuring the Remote Desktop Session Host (RD Session Host) role service. You install an application on all of the RD Session Host servers. The application communicates with a server that allows only one connection per IP address. You need to configure the Remote Desktop IP Visualization settings for this application. Which two actions should you perform? (Each correct answer presents part of the solution. Choose two.) A. Enable Remote Desktop IP Visualization. B. Set the IP Visualization mode to Per session. C. Set the IP Visualization mode to Per program. D. Disable Remote Desktop IP Visualization. Answer: AC Explanation: 12/06/2012 Changed answer from BC to AC, because it states in the question "The application communicates with a server that allows only one connection per IP address." there is no need to set Set the IP Visualization mode to Per session, <http://blogs.msdn.com/b/rds/archive/2009/07/09/configuring-remote-desktop-ip-virtualization-part-1.aspx> Remote Desktop IP Virtualization allows IP addresses to be assigned to remote desktop connections on a per session or per program basis. This can be useful if a program communicates with a server that only allows one connection per IP address. Prior to Windows Server 2008 R2, every session on an RD Session Host server was assigned the same IP address. With Windows Server 2008 R2, you can use Remote Desktop IP Virtualization to assign IP addresses on a per session or per program basis. If you assign IP addresses for multiple programs, they will share a per session IP address. If you have more than one network adapter on the server, you must also choose one network adapter for Remote Desktop IP Virtualization. Remote Desktop IP Virtualization is configured by using the Remote Desktop Session Host Configuration tool. On the RD IP Virtualization tab of Remote Desktop Session Host Configuration, you can do the following: Enable or disable Remote Desktop IP Virtualization. Select the network adapter to be used for Remote Desktop IP Virtualization. Configure whether the Remote Desktop IP Virtualization mode is per session or per program. If Remote Desktop IP Virtualization is configured per program, you can add a list of programs that Remote Desktop IP Virtualization can use. Membership in the local Administrators group, or equivalent, on the RD Session Host server that you plan to configure, is the minimum required to complete this procedure. Review details about using the appropriate accounts and group memberships at <http://go.microsoft.com/fwlink/?LinkId=83477>. To configure Remote Desktop IP Virtualization settings On the RD Session Host server, open Remote Desktop Session Host Configuration. To open Remote Desktop Session Host Configuration, click Start, point

to Administrative Tools, point to Remote Desktop Services, and then click Remote Desktop Session Host Configuration. In the Edit settings area, under RD IP Virtualization, double-click IP Virtualization. In the Properties dialog box, click the RD IP Virtualization tab. To enable or disable Remote Desktop IP Virtualization, do one of the following: Select the Enable IP virtualization check box to enable Remote Desktop IP Virtualization. Clear the Enable IP virtualization check box to disable Remote Desktop IP Virtualization. To select the network adapter to be used for Remote Desktop IP Virtualization, in the Select the network adapter to be used for IP virtualization list, select the appropriate network adapter. To select the Remote Desktop IP Virtualization mode, under IP virtualization mode: Click Per session to configure Remote Desktop IP Virtualization to run in per session mode. Click Per program to configure Remote Desktop IP Virtualization to run in per program mode. To assign which programs use Remote Desktop IP Virtualization, under Assign virtual IP addresses to these programs, click Add Program.

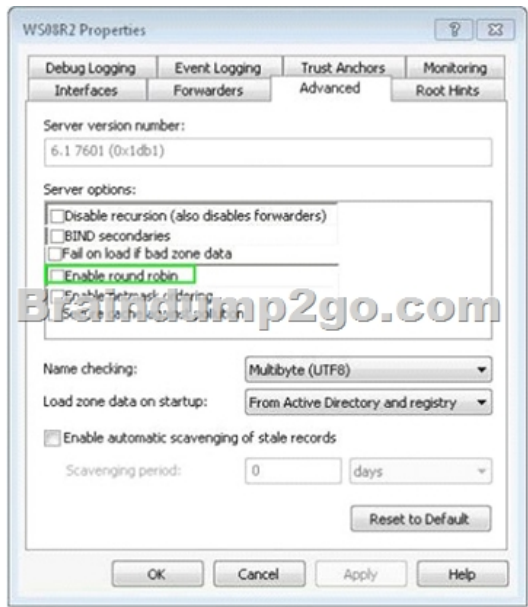
<http://technet.microsoft.com/en-us/library/dd759263.aspx> QUESTION 46 All servers on your network run Windows Server 2008 R2. You deploy Remote Desktop Services (RDS). You are configuring the Remote Desktop Session Host (RD Session Host) role service. You need to ensure that programs that are running continue to run when users are no longer actively connected to the RD Session Host server. Which setting should you configure? A. Idle session limit B. When a session limit is reached or connection is broken C. Active session limit D. End a disconnected session Answer: D Explanation: Remote Desktop Connection Broker (RD Connection Broker), formerly Terminal Services Session Broker (TSSession Broker), is a role service that provides the following functionality: Allows users to reconnect to their existing sessions in a load-balanced RD Session Host server farm. This prevents a user with a disconnected session from being connected to a different RD Session Host server in the farm and starting a new session. QUESTION 47 A company deploys Remote Desktop Services (RDS) on the following servers. You need to use RD Web Access to give users access to RemoteApp applications that they have permissions for. What should you do?

Description
Remote Desktop Session Host (RD S

A. Use the Remote Desktop Web Access Configuration tool to configure Server2 to use Server1 as the RemoteApp source. B. Use the Remote Desktop Web Access Configuration tool to configure Server1 to use Server2 as the RemoteApp source. C. Use the RemoteApp Manager tool to configure Server2 to use Server1 as the RemoteApp source. D. Use the RemoteApp Manager tool to configure Server1 to use Server2 as the RemoteApp source. Answer: B QUESTION 48 Your company has a load-balanced remote Desktop Session Host (RD Session Host) cluster. You are configuring the Remote Desktop Gateway (RD Gateway) role service on servers that run Windows Server 2008 R2. You need to centralize the storage of Remote Desktop connection authorization policies (RD CAPs). Which two actions should you perform? (Each correct answer presents part of the solution. Choose two.) A. Configure the RD Gateway servers to use a remote RD CAP store. B. Configure the RD Gateway servers to use a local RD CAP store. C. Install the Distributed File System role service. D. Install the Network Policy Server role service. Answer: A D Explanation: Network Policy Server (NPS) is the Microsoft implementation of a Remote Authentication Dial-in User Service (RADIUS) server and proxy in Windows Server 2008. NPS is the replacement for Internet Authentication Service (IAS) in Windows Server 2003. As a RADIUS server, NPS performs centralized connection authentication, authorization, and accounting for many types of network access, including wireless and virtual private network (VPN) connections. As a RADIUS proxy, NPS forwards authentication and accounting messages to other RADIUS servers. NPS also acts as a health evaluation server for Network Access Protection (NAP). Distributed File System (DFS) Namespaces and DFS Replication offer simplified, highly-available access to files, load sharing, and WAN-friendly replication. In the Windows Server QUESTION 49 Hotspot Question A company uses Windows Server 2008 R2 Domain Name System (DNS). You are configuring Remote Desktop (RD) Connection Broker load balancing. You add the necessary DNS entries for each RD Session Host server. RD Connection Broker load balancing is not working. You need to ensure that the Remote Desktop sessions are load-balanced across the RD Session Host server farm. Which server option should you use? (To answer, select the appropriate setting or settings in the answer area.)



Answer:



QUESTION 50A company is deploying Windows Server 2008 R2 Remote Desktop services (RDS). Another administrator has installed RDS client access licenses (CALs) on the Remote Desktop license server. You need to ensure that the Remote Desktop Session Host (RD Session Host) server requests licenses from the Remote Desktop license server. What should you do first?

A. Configure Remote Desktop licensing mode on the RD Session Host.
B. Create an RDS farm and add the RD Session Host to the farm.
C. Activate the Remote Desktop license server.
D. Install the RD Licensing role service.

Answer: A

Explanation: "Another administrator has installed RDS client access licenses (CALs) on the Remote Desktop license server"

<http://technet.microsoft.com/en-us/library/cc754487.aspx><http://technet.microsoft.com/en-us/library/dd883253%28v=ws.10%29.aspx>

2015 Latest Released Microsoft 70-659 Exam Dumps Free Download From Braindump2go Now! All Questions and Answers are checked again by Braindump2go Experts Team, 100% Real Questions and Correct Answers Guaranteed! Full Money Back Guarantee Show our Confidence in helping you have a 100% Success of Exam 70-659! Just have a try!

TS: Windows Server 2008 R2, Server Virtualization: 70-659



Questions and Answers : 161
Q&As

Updated: Dec 22, 2015

~~\$429.99~~ **\$99.99**

PDF DEMO

CHECK OUT

Product Description Exam Number/Code: 70-659

Exam Number/Code: 70-659

"TS: Windows Server 2008 R2, Server Virtualization", also known as 70-659 exam, is a Microsoft Certification. With the complete collection of questions and answers, Braindump2go has assembled to take you through 161 Q&As to your 70-659 Exam preparation. In the 70-659 exam resources, you will cover every field and category in Microsoft MCITP helping to ready you for your successful Microsoft Certification.

Free Demo Download

Braindump2go offers free demo for 70-659 exam (TS: Windows Server 2008 R2, Server Virtualization). You can check out the interface, question quality and usability of our practice exams before you decide to buy it.

☒ **Printable PDF** ☒ **Premium VCE + VCE Simulator**

FREE DOWNLOAD: NEW UPDATED 70-659 PDF Dumps & 70-659 VCE Dumps from Braindump2go:
<http://www.braindump2go.com/70-659.html> (161 Q&As)