

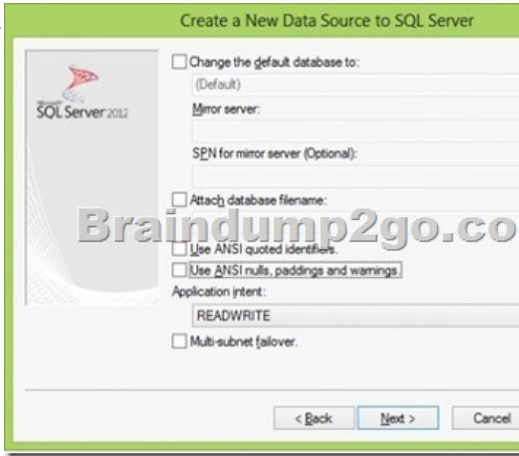
Microsoft MB3-700 Latest Important Questions with Answers and Explanation Shared By Braindump2go (71-80)

The Microsoft MB3-700 Practice Exam is a very hard exam to successfully pass your exam. Here you will find Free Braindump2go Microsoft Practice Sample Exam Test Questions that will help you prepare in passing the MB3-700 exam. Braindump2go Guarantees you 100% PASS exam MB3-700 Vendor: Microsoft Exam Code: MB3-700 Exam Name: Microsoft Dynamics GP 2013 Installation & Configuration Keywords: Microsoft MB3-700 Exam Dumps, MB3-700 Practice Tests, MB3-700 Practice Exams, MB3-700 Exam Questions, MB3-700 Dumps, MB3-700 PDF, MB3-700 VCE

Compared Before Buying Microsoft MB3-700 P

Pass4sure	Braindump2go	
	100% Pass OR Money Back	
Not In Stock	95 Q&As – Real Questions	Not In
/	\$99.99	/
/	Coupon Code: BDNT2014	/

QUESTION 71 You have three Microsoft Word templates for the SOP Blank Invoice Form as described: Template A is assigned as the default Template B is assigned to Customer Class A Template C is assigned to Customer 1 Customer 2 belongs to Customer Class B. Which template will be used to print an invoice for Customer 2? A. Template BB. Template CC. Template AD. Standard GP Report Answer: A QUESTION 72 Which file format can be used to automatically send standard Report Writer reports by using email? A. XPSB. PDFC. HTMLD. DOCX Answer: C QUESTION 73 You are installing Microsoft Dynamics GP on a new workstation. You need to create an Open Database Connectivity (ODBC) connection for Microsoft Dynamics GP. Which two options should you configure? (Each correct answer presents part of the solution. Choose two.) A. Clear the Use ANSI quoted identifiers check box.B. Select the Use strong encryption for data check box.C. Clear the Use ANSI nulls, paddings and warnings check box.D. Select the Use regional settings when outputting currency, numbers, dates and times check box. Answer: AC Explanation: Uncheck Use ANSI quoted identifiers and uncheck Use ANSI nulls, paddings and warnings.



Create a New Data Source to SQL Server QUESTION 74 You create a software update by using the Automatic Updates feature. What type of delivery file is supported? A. .zip fileB. .exe fileC. .cnk fileD. .msp file Answer: C QUESTION 75 What is the minimum version of Windows Internet Explorer that is compatible with the Microsoft Dynamics GP desktop client? A. Internet Explorer 7.0B. Internet Explorer 8.0C. Internet Explorer 9.0D. Internet Explorer 10.0 Answer: B QUESTION 76 You need to ensure that no other users can access Microsoft Dynamics GP while you perform the Check Links process. What should you do? A. Set the Database Read-Only property for the database to FALSE.B. Set the Restrict Access property for the database to SINGLE_USER.C. Set the Restrict Access property for the database to RESTRICTED_USER.D. Set the Database Read-Only property for the database to TRUE. Answer: B QUESTION 77 You configure database options to resolve connectivity issues with the database. Which two settings should be set to False? (Each correct answer presents a complete solution. Choose two.) A. Auto ShrinkB. Auto CloseC. Auto Create StatisticsD. Auto Update Statistics Answer: AB Explanation: Note: * Step 1: Verify that the SQL database options AutoClose and AutoShrink are set to FALSE. Copy the following script to the New Query 1 window: ALTER DATABASE DYNAMICS SET AUTO_SHRINK OFF, AUTO_CLOSE OFF * Step 2: Verify that the ODBC System DSN data

source connection on each computer tests successfully for connectivity with the SQL Server holding the Dynamics GP or the Great Plains databases

QUESTION 78 Which method can be used to restrict data removed by the Clear Data utility?

A. Display Window Name

B. SQL Statement with a WHERE clause

C. Date Range

D. Logical Table Group

Answer: D

QUESTION 79 You need to ensure that the database for Microsoft Dynamics GP can be restored to a specific point in time. Which recovery model should you specify?

A. Full

B. Simple

C. Bulk-Logged

D. Transaction Log

Answer: A

QUESTION 80 Which two actions can you use to repair or reconstruct damaged Microsoft Dynamics GP data? (Each correct answer presents a complete solution. Choose two.)

A. Use the Check Links process in Microsoft Dynamics GP.

B. Run a Reconcile process in Microsoft Dynamics GP.

C. Run the DBCC CHECKDB command in SQL Server.

D. Use the SQL Database Maintenance window in Microsoft Dynamics GP.

Answer: AB

Explanation: A: Checking links examines tables, checking corresponding information in related tables and, if possible, changing the damaged data to match the corresponding data in an undamaged table. If you were alerted to damage by an alert message indicating damage to a specific table, the name of the table won't be listed in the Check Links window. Any user can run check links.

B: You should reconcile your data if checking links doesn't resolve the problem. Reconciling compares corresponding data in different table groups and removes any lone, or "orphan," records. For example, a report option that was created for a report that no longer exists is an orphan record, and would be removed. Reconciling also checks to be sure that corresponding or identical information stored in two different tables is the same, and if there are discrepancies, changes the information in the table you're reconciling to match the information in the table it's being compared with.

Braindump2go Offers PDF & VCE Dumps Download for New Released Microsoft MB3-700 Exam! 100% Exam Success Guaranteed OR Full Money Back Instantly!

Compared Before Buyi

Pass4sure	100%
Not In Stock	95 Q&A
/	\$99.99
/	Coupon

<http://www.braindump2go.com/mb3-700.html>