

Microsoft Official Exam Center New Released 70-466 Practice Exam Questions Free Download from Braindump2go (51-60)

The Microsoft 70-466 Practice Exam is a very hard exam to successfully pass your exam. Here you will find Free Braindump2go Microsoft Practice Sample Exam Test Questions that will help you prepare in passing the 70-466 exam. Braindump2go Guarantees you 100% PASS exam 70-466 Vendor: Microsoft Exam Code: 70-466 Exam Name: Implementing Data Models and Reports with Microsoft SQL Server 2014 Exam

| Compared Before Buying Microsoft 70-466 PDF & VCE! | | |
|--|-------------------------|----------|
| Pass4sure | Braindump2go | TestKing |
| | 100% Pass OR Money Back | |
| Not In Stock | 186 Q&As | 50 Q&As |
| / | \$99.99 | \$124.99 |
| / | Coupon Code: BDNT2014 | / |

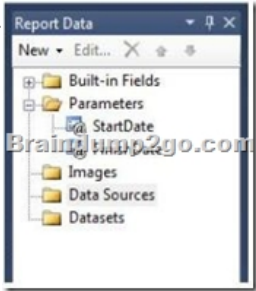
QUESTION 51 You are creating a SQL Server Analysis Services (SSAS) multidimensional database. Users need a time dimension for: - Dates- Delivery dates- Ship dates You need to implement the minimum number of required SSAS objects. What should you do?

A. Use role playing dimensions. B. Use the Business Intelligence Wizard to define dimension intelligence. C. Add a measure that uses the Count aggregate function to an existing measure group. D. Add a measure that uses the DistinctCount aggregate function to an existing measure group. E. Add a measure that uses the LastNonEmpty aggregate function. Use a regular relationship between the time dimension and the measure group. F. Add a measure group that has one measure that uses the DistinctCount aggregate function. G. Add a calculated measure based on an expression that counts members filtered by the Exists and NonEmpty functions. H. Add a hidden measure that uses the Sum aggregate function. Add a calculated measure aggregating the measure along the time dimension. I. Create several dimensions. Add each dimension to the cube. J. Create a dimension. Then add a cube dimension and link it several times to the measure group. K. Create a dimension. Create regular relationships between the cube dimension and the measure group. Configure the relationships to use different dimension attributes. L. Create a dimension with one attribute hierarchy. Set the XsAggregatable property to False and then set the DefaultMember property. Use a regular relationship between the dimension and measure group. M. Create a dimension with one attribute hierarchy. Set the IsAggregatable property to False and then set the DefaultMember property. Use a many-to-many relationship to link the dimension to the measure group. N. Create a dimension with one attribute hierarchy. Set the ValueColumn property, set the IsAggregatable property to False, and then set the DefaultMember property. Configure the cube dimension so that it does not have a relationship with the measure group. Add a calculated measure that uses the MemberValue attribute property. O. Create a new named calculation in the data source view to calculate a rolling sum. Add a measure that uses the Max aggregate function based on the named calculation.

Answer: A QUESTION 52 You are designing a SQL Server Reporting Services (SSRS) report based on a SQL Server Analysis Services (SSAS) cube. The cube is used to measure sales growth by salesperson. The cube contains a Key Performance Indicator (KPI) to show if a salesperson's sales are off target, slightly off target, or on target. You need to add a report item that visually displays the KPI status value as a red, yellow, or green flag. Which report item should you add? A. a Sparkline B. a Gauge that uses the Radial type C. an Indicator D. a Gauge that uses the Linear type E. a Data Bar Answer: C QUESTION 53 You install SQL Server Reporting Services (SSRS). You need to back up a copy of the symmetric key. Which command should you run? A. rskeymgmt-dB. rskeymgmt-iC. rskeymgmt-e-f %temp%rs.key-p Password1D. rskeymgmt-a-f %temp%rs.key-p Password1 Answer: C QUESTION 54 You are developing a SQL Server Reporting Services (SSRS) report. The report includes a dataset with fields named Year, MonthNumber, and InvCount. The report includes a table that displays the inventory count per year, as shown in the following diagram. You need to modify the table to include a graphical item displaying the inventory count trend to the right of the Inv Count column. What should you do?

| Inv Count | |
|-----------|-----------|
| Year | Inv Count |
| 1995 | 46,043 |
| 1996 | 45,741 |
| 1997 | 45,765 |
| 1998 | 45,848 |
| 1999 | 47,193 |
| 2000 | 48,456 |
| 2001 | 48,412 |
| 2002 | 48,442 |
| 2003 | 48,049 |
| 2004 | 48,442 |
| 2005 | 48,519 |
| 2006 | 48,837 |
| 2007 | 49,074 |
| 2008 | 48,981 |
| 2009 | 49,251 |
| 2010 | 49,407 |
| 2011 | 49,547 |

A. Add an Indicator item to a new column on the right of the Inv Count column. Select the Directional Indicator type and then select the MonthNumber field for Value.B. Add a Sparkline item to a new column on the right of the Inv Count column. Then select the InvCount field for Values and the MonthNumber field for Category Groups.C. Add an Indicator item to a new column on the right of the Inv Count column. Select the Directional Indicator type and then assign the MonthNumber field to the Start property.D. Add a Sparkline item to a new column on the right of the Inv Count column. Then select the InvCount field for Values and the MonthNumber field for Series Groups.E. Add a text box to a new column on the right of the Inv Count column. Then use a Go to report action to link to a separate report showing the monthly trend. Answer: B QUESTION 55Drag and Drop QuestionsYou are developing a SQL Server Reporting Services (SSRS) report that sources data from a SQL Azure database and a SQL Server Analysis Services (SSAS) cube. The cube contains a date dimension and other dimensions. The report design includes two report parameters named StartDate and FinishDate as shown in the following diagram.



The Data Type property of the parameters is set to Date/Time. The Data Type property of the parameters is set to Date/Time. You need to create the dataset based on the SSAS cube. You also need to ensure that the dataset is filtered by the existing report parameters. Which three actions should you perform in sequence? (To answer, move the appropriate actions from the list of actions to the answer area and arrange them in the correct order.)

- Create a data source using the Microsoft SQL Server connection type.
- Modify the parameter expressions of the dataset to include the **ToString()** function.
- Create two report parameters with Date/Time data types to receive their default values from the two hidden datasets.
- Create a dataset with a parameterized filter using a hierarchy from the date dimension that uses the **Contains** operator. Do not close the Dataset Properties window.
- Create a dataset with a parameterized filter using a hierarchy from the date dimension that uses the **Range (Inclusive)** operator. Do not close the Dataset Properties window.
- Create a data source using the Microsoft SQL Server Analysis Services connection type.
- Write an expression in the dataset Parameter Value textbox that converts the Date/Time parameter values to be compatible with the dimension member.
- Select the **Parameters** page and then assign an expression to each query parameter to convert the report parameter values to the appropriate date dimension hierarchy member keys.

Answer:

Create a data source using the Microsoft SQL Server connection type.

Modify the parameter expressions of the dataset to include the **ToString()** function.

Create two report parameters with Date/Time data types to receive their default values from the two hidden datasets.

Create a dataset with a parameterized filter using a hierarchy from the date dimension that uses the **Contains** operator. Do not close the Dataset Properties window.

Create a dataset with a parameterized filter using a hierarchy from the date dimension that uses the **Range (Inclusive)** operator. Do not close the Dataset Properties window.

Create a data source using the Microsoft SQL Server Analysis Services connection type.

Write an expression in the dataset Parameter Value textbox that converts the Date/Time parameter values to be compatible with the dimension member.

Select the **Parameters** page and then assign an expression to each query parameter to convert the report parameter values to the appropriate date dimension hierarchy member keys.

Create a data source using the Microsoft SQL Server Analysis Services connection type.

Create a dataset with a parameterized filter using a hierarchy from the date dimension that uses the **Range (Inclusive)** operator. Do not close the Dataset Properties window.

Select the **Parameters** page and then assign an expression to each query parameter to convert the report parameter values to the appropriate date dimension hierarchy member keys.

Explanation:- In Reporting Services, a dataset is based on an existing a data source. A dataset specifies a query, query parameters,

filters, and a field collection. You can also specify data options, such as case, collation, datatype, width, and accent, for the data retrieved from the data source. For more information, see Understanding Report Datasets. To create a dataset, you must have defined an embedded or shared data source. When you deploy Reporting Services, a set of data processing extensions are automatically installed and registered on both the report authoring client and on the report server to provide access to a variety of data source types. SQL Server 2008 Reporting Services (SSRS) installs the following data source types: Microsoft SQL Server, Microsoft SQL Server Analysis Services, Oracle, SAP NetWeaver BI, Hyperion Essbase, Teradata, OLE DB, ODBC, and XML. To define a query parameter in MDX in Design mode After you run the query, click Design on the toolbar to toggle to Query mode to view the MDX query that was created. Do not change the query text in Query mode if you want to continue to use Design mode to develop the query. Click Design to toggle back to Design mode. To create a dataset In a few cases, the field collection specified by the query can only be determined by running the query on the data source. For example, a stored procedure may return a variable set of fields in the result set. Click Refresh Fields to run the query on the data source and retrieve the field names that are needed to populate the dataset field collection in the Report Data pane. The field collection appears under the dataset node after you close the Dataset Properties dialog box. The dataset and its field collection appear in the Report Data pane under the data source node. Reference: How to: Create a Dataset (Reporting Services); How to: Define Parameters in the MDX Query Designer for Analysis Services (Report Builder 3.0 and SSRS) QUESTION 56 Drag and Drop Questions You are planning the installation of PowerPivot for SharePoint. You install SharePoint Server 2010 Enterprise Edition with Service Pack 1. You need to install the PowerPivot for SharePoint instance. Then you need to configure the Default Account username used to provision shared services in the SharePoint farm. Which three actions should you perform in sequence? (To answer, move the appropriate actions from the list of actions to the answer area and arrange them in the correct order.)

| |
|---|
| Enter the Default Account username and password. |
| Run the PowerPivot Configuration Tool. |
| Install SQL Server PowerPivot Add-in for SharePoint. |
| Use the Import from File option to import the project type. |
| Open the Services management console and edit the PowerPivot System Service properties. |
| Open SQL Server Data Tools and create a new project. |

Answer:

| | |
|---|--|
| Enter the Default Account username and password. | Install SQL Server PowerPivot Add-in for SharePoint. |
| Run the PowerPivot Configuration Tool. | Run the PowerPivot Configuration Tool. |
| Install SQL Server PowerPivot Add-in for SharePoint. | Enter the Default Account username and password. |
| Use the Import from File option to import the project type. | |
| Open the Services management console and edit the PowerPivot System Service properties. | |
| Open SQL Server Data Tools and create a new project. | |

Explanation: Update an expired password for SQL Server Analysis Services (PowerPivot) instance Reference: Change Service Accounts and Passwords (PowerPivot for SharePoint) QUESTION 57 You have a server that has SQL Server 2012 installed. You need to identify which parallel execution plans are running in serial. Which tool should you use? A. Data Profile Viewer B. Database Engine Tuning Advisor C. Performance Monitor D. Extended Events Answer: D QUESTION 58 You have a database named database1. Database developers report that there are many deadlocks. You need to implement a solution to monitor the deadlocks. The solution must meet the following requirements: Support real-time monitoring. Be enabled and disabled easily. Support querying of the monitored data. What should you implement? More than one answer choice may achieve the goal. Select the BEST answer. A. an Extended Events session B. a SQL Server Profiler template C. log errors by using trace flag 1204 D. log errors by using trace flag 1222 Answer: A QUESTION 59 You are developing a multidimensional project that includes a dimension named Organization. The dimension is based on the DimOrganization table in the data warehouse. The following diagram illustrates the table design. The Organization dimension includes a parent-child hierarchy named Organizations. The dimension includes the following dimension attributes: Organization, which is a key attribute Organizations, which defines the parent-child hierarchy Currency Code, which is a regular attribute When users browse the dimension, three hierarchies are visible to them. You need to ensure that the Organization hierarchy is not visible to users. What should you do?



A. Set the AttributeHierarchyDisplayFolder property to Null for the Organization attribute.B. Delete the Organization attribute.
C. Set the AttributeHierarchyEnabled property to False for the Organization attribute.D. Set the AttributeHierarchyVisible property to False for the Organization attribute. Answer: D QUESTION 60You are conducting a design review of a multidimensional project. In the geography dimension, all non-key attributes relate directly to the key attribute. The underlying data of the geography dimension supports relationships between attributes. You need to increase query and dimension processing performance. What should you do? A. For the geography dimension, set the ProcessingMode property to LazyAggregationsB. For the dimension attributes of the geography dimension, define appropriate attribute relationships.C. For the geography dimension, set the ProcessingPriority property to 1.D. For the dimension attributes of the geography dimension, set the GroupingBehavior property to EncourageGrouping. Answer: B Want to be 70-466 certified? Using Braindump2go New Released 70-466 Exam Dumps Now! We Promise you a 100% Success Passing Exam 70-466 Or We will return your money back instantly!

| |
|--------------|
| Compare |
| Pass4 |
| Not In Stock |
| / |
| / |

<http://www.braindump2go.com/70-466.html>