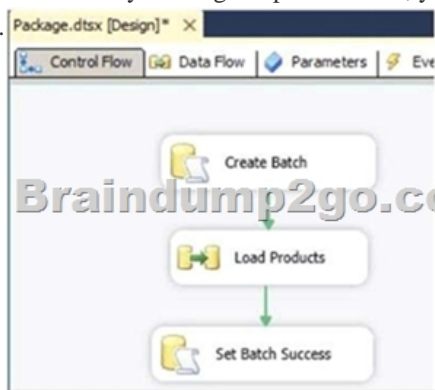


## [New-70-767-Dumps100% Exam Pass-70-767 PDF and VCE Dumps Free from Braindump2go[31-40]

2017 Aug New Microsoft 70-767 Exam Dumps with PDF and VCE Free Updated in [www.Braindump2go.com](https://www.braindump2go.com) Today!100% 70-767 Real Exam Questions! 100% 70-767 Exam Pass Guaranteed! 1.|2017 New 70-767 Exam Dumps(PDF & VCE) 247Q&As Download:<https://www.braindump2go.com/70-767.html> 2.|2017 New 70-767 Exam Questions & Answers Download: <https://drive.google.com/drive/folders/0B75b5xYLjSSNN1RSdIN6Z0VwRjg?usp=sharing> QUESTION 31You are installing the Data Quality Client on user desktops. You need to ensure that the prerequisite software components are installed. Which components must be present to meet this goal? (Each correct answer presents part of the solution. Choose all that apply.) A. SQL Server Management StudioB. Internet Explorer 6.0 SP1 or laterC. Microsoft Silverlight 5D. .NET Framework 3.5 SP1E. .NET Framework 4.0F. Microsoft Silverlight 4G. SQL Server Data Tools Answer: BEEExplanation:Before installing DQS, make sure that your computer meets the minimum system requirements.Data Quality Client requirement:.NET Framework 4.0 (installed during the Data Quality Client installation, if not already installed) Internet Explorer 6.0 SP1 or later QUESTION 32Drag and Drop QuestionYou are building a SQL Server Integration Services (SSIS) package to load product data sourced from a SQL Azure database to a data warehouse. Before the product data is loaded, you create a batch record by using an Execute SQL task named Create Batch. After successfully loading the product data, you use another Execute SQL task named Set Batch Success to mark the batch as successful.



You need to create and execute an Execute SQL task mark the batch as failed if either the Create Batch or Load Products task fails. Which three steps should you perform in sequence? (To answer, move the appropriate actions from the list of actions to the answer area and arrange them in the correct order.)

Set the **Multiple Constraints** option to **Logical OR**.

Set the **Evaluation Operation** option to **Expression OR Constraint**.

Connect the **Create Batch** and **Load Products** tasks to the **Set Batch Failure** task with failure constraints.

Set the **Multiple Constraints** option to **Logical AND**.

Connect the **Create Batch** and **Load Products** tasks to the **Set Batch Failure** task with completion constraints.

Set the **ForceExecutionValue** property of the **Create Batch** task to **True**.

Answer:

Set the **Multiple Constraints** option to **Logical OR**.

Set the **Evaluation Operation** option to **Expression OR Constraint**.

Connect the **Create Batch** and **Load Products** tasks to the **Set Batch Failure** task with failure constraints.

Set the **Multiple Constraints** option to **Logical AND**.

Connect the **Create Batch** and **Load Products** tasks to the **Set Batch Failure** task with completion constraints.

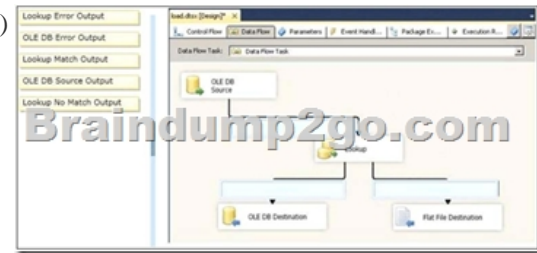
Set the **ForceExecutionValue** property of the **Create Batch** task to **True**.

Create an Execute SQL task named **Set Batch Failure** to mark the batch as failed.

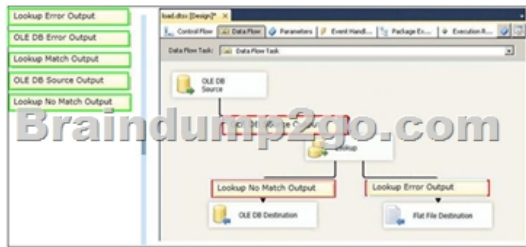
Connect the **Create Batch** and **Load Products** tasks to the **Set Batch Failure** task with failure constraints.

QUESTION 33Drag and Drop QuestionsYou are developing a SQL Server Integration Services (SSIS) package to insert new data into a data mart. The package uses a Lookup transformation to find matches between the source and destination. The data flow has the following requirements:- New rows must be inserted.- Lookup failures must be written to a flat file.In the Lookup transformation, the setting for rows with no matching entries is set to Redirect rows to no match output. You need to configure the package to direct data into the correct destinations. How should you design the data flow outputs? (To answer, drag the appropriate

transformation from the list of answer options to the correct location in the answer area.)



Answer:



Explanation: Records that have no match in the destination are new records and so should be inserted. Any errors should be recorded in the flat file. <http://msdn.microsoft.com/en-us/library/ms141821.aspx> <http://msdn.microsoft.com/en-us/library/bb895366.aspx> <https://www.simple-talk.com/sql/ssis/implementing-lookup-logic-in-sql-server-integration-services/> QUESTION 34 You are creating a SQL Server Master Data Services (MDS) model. This model is used to store a master list of products. An attribute must be added to the Product entity to define the sales manager responsible for each product. You need to create an attribute in the Product entity that prevents users from entering invalid sales manager values. Which type of attribute should you create? A. Recursive B. Explicit C. Domain-based D. User-defined E. Derived F. Parent Answer: C Explanation:

<http://msdn.microsoft.com/en-us/library/bb190163.aspx> <http://msdn.microsoft.com/en-us/library/ee633737.aspx> <http://msdn.microsoft.com/en-us/library/ee633759.aspx> <http://msdn.microsoft.com/en-us/library/ee633745.aspx> <http://msdn.microsoft.com/en-us/library/ee633724.aspx> <http://msdn.microsoft.com/en-us/library/ee633733.aspx> <http://msdn.microsoft.com/en-us/library/ff487058.aspx> QUESTION 35 You are completing the installation of the Data Quality Server component of SQL Server Data Quality Services (DQS). You need to complete the post-installation configuration. What should you do? A. Run the DQSInstaller.exe command. B. Install the data providers that are used for data refresh. C. Install ADOMD.NET. D. Run the dbimpexp.exe command. Answer: A Explanation:

<http://msdn.microsoft.com/en-us/library/ff877917.aspx> <http://msdn.microsoft.com/en-us/library/gg492277.aspx> QUESTION 36 You are creating a SQL Server Master Data Services (MDS) model for a company. The source data for the company is stored in a single table that contains the manager-to-subordinate relationships. You need to create a hierarchy representing the organizational structure of the company. Which hierarchy type should you use? A. Organizational B. Recursive C. Non-Mandatory Explicit D. Many-to-Many Answer: B QUESTION 37 You are the data steward for a Business Intelligence project. You must identify duplicate rows stored in a SQL Server table and output discoveries to a CSV file. A Data Quality Services (DQS) knowledge base has been created to support this project. You need to produce the CSV file with the least amount of development effort. What should you do? A. Create an Integration Services package and use a Data Profiling transform. B. Create a custom .NET application based on the Knowledgebase class. C. Create a data quality project. D. Create a CLR stored procedure based on the Knowledgebase class. E. Create a Master Data Services (MDS) business rule. Answer: C Explanation: <http://msdn.microsoft.com/en-us/library/hh213052.aspx> <http://msdn.microsoft.com/en-us/library/ff877917.aspx> <http://msdn.microsoft.com/en-us/library/microsoft.masterdataservices.services.datacontracts.knowledgebase.aspx> <http://msdn.microsoft.com/en-us/library/bb895263.aspx> QUESTION 38 You manage a SQL Server Master Data Services (MDS) environment. A new application requires access to the product data that is available in the MDS repository. You need to design a solution that gives the application access to the product data with the least amount of development effort. What should you do? A. Create a Subscription View in MDS. B. Access the product entity tables in the MDS database directly. C. Use SQL Server Integration Services (SSIS) to extract the data and put it in a staging database. D. Use change data capture on the product entity tables. Answer: A QUESTION 39 You are installing SQL Server Data Quality Services (DQS). You need to give users belonging to a specific Active Directory group access to the Data Quality Server. Which SQL Server application should you use? A. Data Quality Client with administrative credentials B. SQL Server Configuration Manager with local administrative credentials C. SQL

Server Data Tools with local administrative permissionsD. SQL Server Management Studio with administrative credentials  
Answer: D QUESTION 40You are using the Knowledge Discovery feature of the Data Quality Services (DQS) client application to modify an existing knowledge base. In the mapping configuration, two of the three columns are mapped to existing domains in the knowledge base. The third column, named Team Type, does not yet have a domain. You need to complete the mapping of the Team Type column. What should you do? A. Add a column mapping for the Team Type column.B. Map a composite domain to the source column.C. Create a composite domain that includes the Team Type column.D. Add a domain for the Team Type column.

Answer: DExplanation:<http://msdn.microsoft.com/en-us/library/ff877917.aspx>  
<http://msdn.microsoft.com/en-us/library/hh213015.aspx><http://msdn.microsoft.com/en-us/library/gg524799.aspx>  
!!!RECOMMEND!!!1.|2017 New 70-767 Exam Dumps(PDF & VCE) 247Q&As Download:  
<https://www.braindump2go.com/70-767.html> 2.|2017 New 70-767 Study Guide Video: YouTube Video:  
[YouTube.com/watch?v=YL58kAz1KoA](https://www.youtube.com/watch?v=YL58kAz1KoA)