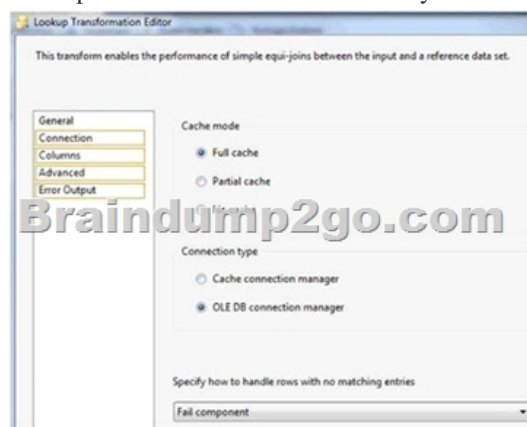


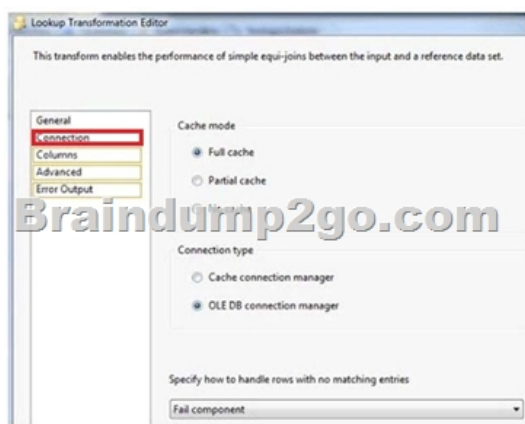
## [New-70-767-DumpsBraindump2go 70-767 Exam Questions and Answers Free Download][11-20]

2017 Aug New Microsoft 70-767 Exam Dumps with PDF and VCE Free Updated in [www.Braindump2go.com](http://www.Braindump2go.com) Today!100% 70-767 Real Exam Questions! 100% 70-767 Exam Pass Guaranteed! 1.|2017 New 70-767 Exam Dumps(PDF & VCE) 247Q&As Download:<https://www.braindump2go.com/70-767.html> 2.|2017 New 70-767 Exam Questions & Answers Download: <https://drive.google.com/drive/folders/0B75b5xYLjSSNN1RSdIN6Z0VwRjg?usp=sharing> QUESTION 11You are developing a SQL Server Integration Services (SSIS) package. You need to design a package to change a variable value during package execution by using the least amount of development effort.What should you use? A. Expression taskB. Script taskC. Execute SQL taskD. Execute Process taskE. Term Extraction transformation Answer: AExplanation:

<http://msdn.microsoft.com/en-us/library/hh213137.aspx> QUESTION 12Hotspot QuestionsYou are developing a data flow to load sales data into a fact table. In the data flow, you configure a Lookup Transformation in full cache mode to look up the product data for the sale. The lookup source for the product data is contained in two tables. You need to set the data source for the lookup to be a query that combines the two tables. Which page of the Lookup Transformation Editor should you select to configure the query? To answer, select the appropriate page in the answer area.



Answer:



QUESTION 13You are creating a SQL Server Integration Services (SSIS) package to retrieve product data from two different sources. One source is hosted in a SQL Azure database. Each source contains products for different distributors. Products for each distributor source must be combined for insertion into a single product table destination. You need to select the appropriate data flow transformation to meet this requirement. Which transformation types should you use? (Each correct answer presents a complete solution. Choose all that apply.) A. MulticastB. Merge JoinC. Term ExtractionD. union AllE. Merge Answer: DE Explanation:<http://msdn.microsoft.com/en-us/library/ms141703.aspx><http://msdn.microsoft.com/en-us/library/ms141775.aspx> <http://msdn.microsoft.com/en-us/library/ms141020.aspx><http://msdn.microsoft.com/en-us/library/ms141809.aspx> <http://msdn.microsoft.com/en-us/library/ms137701.aspx> QUESTION 14You are using SQL Server Data Tools to develop a SQL Server Integration Services (SSIS) project. The first package that you create in this project contains a package connection that accesses a flat file. Additional packages in the project must also access this file. You need to define and reuse the flat file connection in all project packages. What should you do? A. Convert the package Connection Manager in the first package to a project

Connection Manager.B. Copy the package Connection Manager and paste it into the second package.C. Convert the project to the Package Deployment model.D. Set the ProtectionLevel property of the package Connection Manager to DontSaveSensitive to reuse the flat file connection. Answer: A QUESTION 15Drag and Drop QuestionA Data Flow task in a SQL Server Integration Services (SSIS) package produces run-time errors. You need to edit the package to log specific error messages. Which three actions should you perform in sequence? (To answer, move the appropriate actions from the list of actions to the answer area and arrange them in the correct order.)



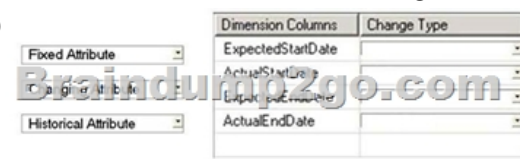
Answer:



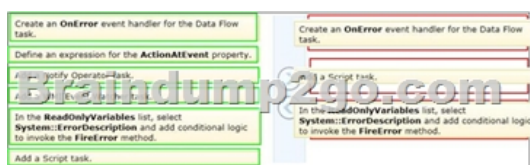
QUESTION 16You are designing a SQL Server Integration Services (SSIS) package that uses the Fuzzy Lookup transformation. The reference data to be used in the transformation does not change. You need to reuse the Fuzzy Lookup match index to increase performance and reduce maintenance. What should you do? A. Select the GenerateAndPersistNewIndex option in the Fuzzy Lookup Transformation Editor.B. Select the GenerateNewIndex option in the Fuzzy Lookup Transformation Editor.C. Select the DropExistingMatchIndex option in the Fuzzy Lookup Transformation Editor.D. Execute the sp\_FuzzyLookupTableMaintenanceUninstall stored procedure.E. Execute the sp\_FuzzyLookupTableMaintenanceInvoke stored procedure. Answer: AExplanation: <http://msdn.microsoft.com/en-us/library/ms137786.aspx> QUESTION 17You are using a SQL Server Integration Services (SSIS) project that is stored in the SSIS catalog. An Environment has been defined in the SSIS catalog. You need to add the Environment to the project.Which stored procedure should you use? A.

catalog.set\_environment\_reference\_typeB. catalog.set\_environment\_propertyC. catalog.create\_environment\_referencD.

catalog.create\_environment Answer: C QUESTION 18Drag and Drop QuestionYou are developing a SQL Server Integration Services (SSIS) package that imports data into a data warehouse. You are developing the part of the SSIS package that populates the ProjectDates dimension table. The business key of the ProjectDates table is the ProjectName column. The business user has given you the dimensional attribute behavior for each of the four columns in the ProjectDates table:- ExpectedStartDate - New values should be tracked over time. - ActualStartDate - New values should not be accepted. - ExpectedEndDate - New values should replace existing values. - ActualEndDate - New values should be tracked over time. You use the SSIS Slowly Changing Dimension Transformation. You must configure the Change Type value for each source column. Which settings should you select? (To answer, select the appropriate setting or settings in the answer area.)



Answer:



QUESTION 19You are developing a SQL Server Integration Services (SSIS) package that imports data into a data warehouse hosted on SQL Azure. The package uses a Foreach container to process text files found in a folder. The package must be deployed to a single server by using the Project Deployment model. Multiple SQL Server Agent jobs call the package. Each job is executed on a different schedule. Each job passes a different folder path to the package. You need to configure the package to accept the folder path from each job. Which package configuration should you use? A. .dtsConfig fileB. Registry EntryC. Environment VariableD. Parent Package VariableE. XML Configuration File Answer: CExplanation:

<http://msdn.microsoft.com/en-us/library/ms345179.aspx><http://msdn.microsoft.com/en-us/library/ms141708.aspx>

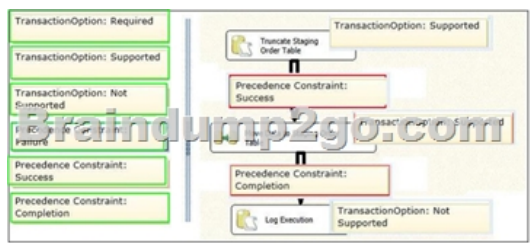
<http://msdn.microsoft.com/en-us/library/hh213214.aspx><http://msdn.microsoft.com/en-us/library/hh213296.aspx>

<http://msdn.microsoft.com/en-us/library/hh213293.aspx>

QUESTION 20 Drag and Drop Questions You are designing a SQL Server Integration Services (SSIS) package. The package moves order-related data to a staging table named Order. Every night the staging data is truncated and then all the recent orders from the online store database are inserted into the staging table. Your package must meet the following requirements:- If the truncate operation fails, the package execution must stop and report an error. - If the Data Flow task that moves the data to the staging table fails, the entire refresh operation must be rolled back. - For auditing purposes, a log entry must be entered in a SQL log table after each execution of the Data Flow task. The TransactionOption property for the package is set to Required. You need to design the package to meet the requirements. How should you design the control flow for the package? (To answer, drag the appropriate setting from the list of settings to the correct location or locations in the answer area.)

TransactionOption: Required
TransactionOption: Supported
TransactionOption: Not Supported
Precedence Constraint: Success
Precedence Constraint: Completion

Answer:



!!!RECOMMEND!!! 1. | 2017 New 70-767 Exam Dumps (PDF & VCE) 247Q&As Download:

<https://www.braindump2go.com/70-767.html> 2. | 2017 New 70-767 Study Guide Video: YouTube Video:

[YouTube.com/watch?v=YL58kAz1KoA](https://www.youtube.com/watch?v=YL58kAz1KoA)