

[New-Sep.-2016]100% Real Exam Questions-Microsoft 70-410 Exam VCE & 70-410 PDF 485Q&As Download[NQ8-NQ13]

2016/09 New Microsoft 70-410: Installing and Configuring Windows Server 2012 R2 Exam Questions Updated Today! Free Instant Download 70-410 Exam Dumps (PDF & VCE) 485Q&As from Braindump2go.com Today! 100% Real Exam Questions! 100% Exam Pass Guaranteed! 1. | 2016/09 Latest Microsoft 70-410 Exam Dumps (PDF & VCE) 485Q&As Download: <http://www.braindump2go.com/70-410.html> 2. | 2016/09 Latest Microsoft 70-410 Exam Questions & Answers: <https://drive.google.com/folderview?id=0B75b5xYLjSSNfjBSYTIYY1lpNFI3MmhuSGFGVWtsT3RfTjRUcjdlNTlnNUJXbnMzajJlQ0U&usp=sharing> QUESTION 8 Hotspot Question You have a server named Server1 that runs Windows Server 2012 R2. Several users are members of the local Administrators group. You need to ensure that all local administrators receive User Account Control (UAC) prompts when they run a Microsoft Management Console (MMC). Which setting should you modify from the Local Security Policy? To answer, select the appropriate settings in the answer area.



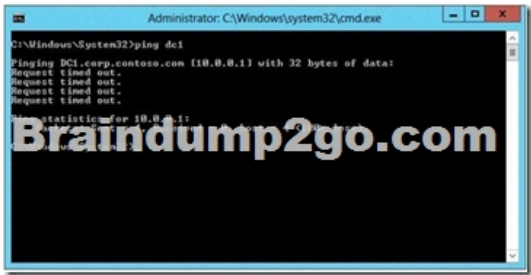
Answer: B



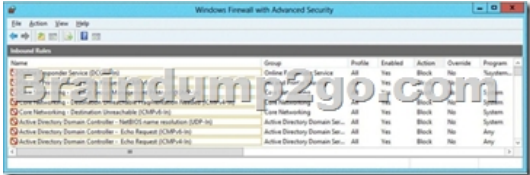
QUESTION 9 You have a network printer connected to print server. You need to be able to print if print server goes down. What should you chose? A. branch office direct printing B. printer pooling C. spooling D. Print forwarding Answer: A Explanation: Branch Office Direct Printing can reduce Wide Area Network (WAN) usage by printing directly to a print device instead of a server print queue. This feature can be enabled or disabled on a per printer basis and is transparent to the user. It is enabled by an administrator using the Print Management Console or Windows PowerShell on the server. The printer information is cached in the branch office, so that if the print server is unavailable for some reason (for example if the WAN link to the data center is down), then it is still possible for the user to print. Branch Office Direct Printing requires the following operating systems:- Windows Server 2012 - Windows 8 <http://technet.microsoft.com/en-us/library/jj134156.aspx> QUESTION 10 You have external virtual switch with srv-io enabled with 10 Virtual Machines on it. You need to make the Virtual Machines able to talk only to each other. A. remove the vswitch and recreate it as private. B. add new vswitch C. remove vswitch and recreate it as public D. adjust srv-io settings Answer: A Explanation: There are three possible modes for the Hyper-V switch: private, internal, and public. Do not confuse these with IP addressing schemes or any other networking configuration in a different technology. Private Switch The private switch allows communications among the virtual machines on the host and nothing else. Even the management operating system is not allowed to participate. This switch is purely logical and does not use any physical adapter in any way. "Private" in this sense is not related to private IP addressing. You can mentally think of this as a switch that has no ability to uplink to other switches. Internal Switch The internal switch is similar to the private switch with one exception: the management operating system can have a virtual adapter on this type of switch and communicate with any virtual machines that also have virtual adapters on the switch. This switch also does not have any matching to a physical adapter and therefore also cannot uplink to another switch. External Switch This switch type must be connected to a physical adapter. It allows communications between the physical network and the management operating

system and virtual machines. Do not confuse this switch type with public IP addressing schemes or let its name suggest that it needs to be connected to a public-facing connection. You can use the same private IP address range for the adapters on an external virtual switch that you're using on the physical network it's attached to

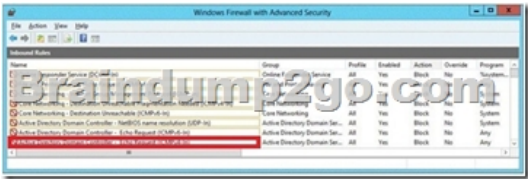
<http://www.altaro.com/hyper-v/the-hyper-v-virtual-switch-explained-part-1/#ixzz2W095PeZd>
<http://technet.microsoft.com/en-us/library/hh831823.aspx> <http://www.altaro.com/hyper-v/hyper-v-virtual-switch-explained-part-2/>
QUESTION 11Hotspot QuestionYour network contains an Active Directory domain named corp.contoso.com. The domain contains a domain controller named DC1. When you run ping dcl.corp.contoso.com, you receive the result as shown in the exhibit. (Click the Exhibit button.)



You need to ensure that DC1 can respond to the Ping command. Which rule should you modify? To answer, select the appropriate rule in the answer area.



Answer:



QUESTION 12Your network contains an Active Directory domain named contoso.com. The domain contains two domain controllers. The domain controllers are configured as shown in the following table.

Name	Operating system	Operation master role
DC1	Windows Server 2012	Domain naming master
DC2	Windows Server 2008 R2	PDC emulator RID master Infrastructure master

You install a new server named Server 1 that runs a Server Core Installation of Windows Server 2012 R2. You need to join Server 1 to the contoso.com domain. The solution must minimize administrative effort. What should you use? A. The dsadd.exe command B. The New-ADComputer cmdletC. The Djoin.exe commandD. The Add-Computer cmdlet Answer: DExplanation:A. Adds specific types of objects to the directoryB. Creates a new Active Directory computer.C. Use djoin for offline join in the perimeter network .D. Add the local computer to a domain or workgroup.<http://technet.microsoft.com/en-us/library/ee617245.aspx>

[http://technet.microsoft.com/en-us/library/ff793312\(v=ws.10\).aspx](http://technet.microsoft.com/en-us/library/ff793312(v=ws.10).aspx)
[http://technet.microsoft.com/en-us/library/cc753708\(v=ws.10\).aspx](http://technet.microsoft.com/en-us/library/cc753708(v=ws.10).aspx) <http://technet.microsoft.com/en-us/library/hh849798.aspx>

QUESTION 13Drag and Drop QuestionYou have a print server named Server1. Server1 runs Windows Server 2008 R2. You have a file server named Server2. Server2 runs Windows Server 2012 R2. You need to migrate all of the printers on Server1 to Server2. Which actions should you perform on the servers?

Run smigdeploy.exe.

Run printbrm.exe -p all:org.

Install the Windows Server Migration Tools feature.

From the Print Management console, import the printers.

From the Print Management console, export the printers.

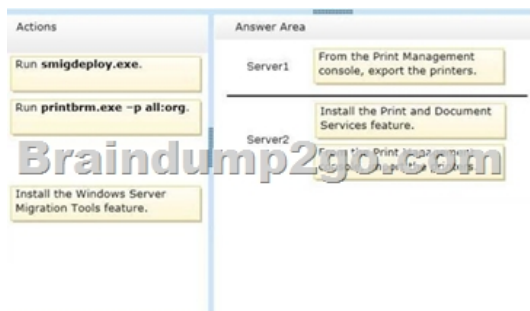
Server1

Server2

Action

Action

Answer:



Explanation:printbrm -p all:org - Publishes all printers in the directory, or publishes printers that were published originally.While the original server is still running, use the Printer Migration Wizard or the Printbrm.exe command-line tool to export or back up the print information (such as settings, queues, and drivers) in a printer settings file. Then, import or restore this backup image to a destination server running Windows Server 2012 that has been configured to run as a print server.

<http://technet.microsoft.com/en-us/library/jj134150.aspx> !!!RECOMMEND!!! 1.|2016/09 Latest Microsoft 70-410 Exam Dumps (PDF & VCE) 485Q&As Download:<http://www.braindump2go.com/70-410.html> 2.|2016/09 Latest Microsoft 70-410 Exam

Questions & Answers:

<https://drive.google.com/folderview?id=0B75b5xYLjSSNfjBSYTIYY1lpNFI3MmhuSGFGVWtsT3RfTjRUcjdlNTlnNUJXbnMzajJlQ0U&usp=sharing>