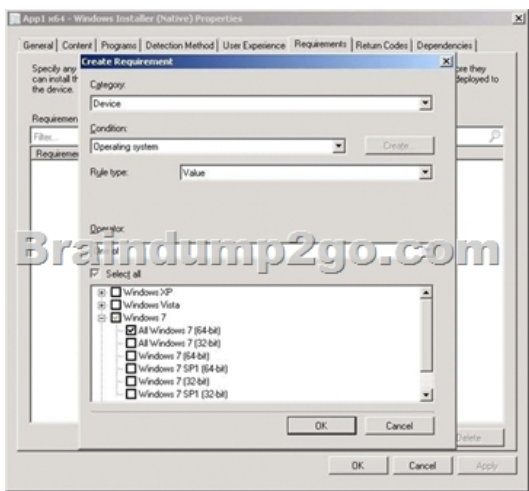
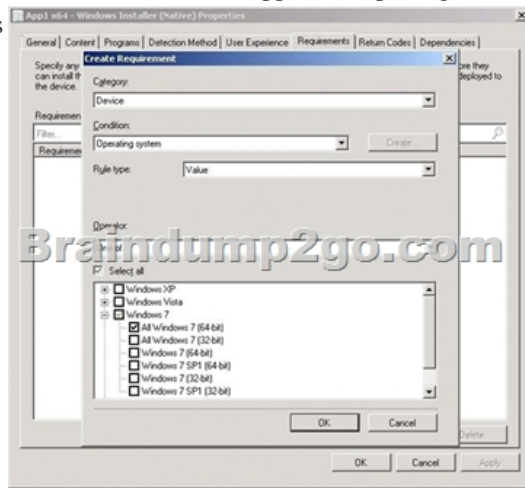


## [New-Sep.-2016] 100% Valid Microsoft 70-243 PDF Dumps and 70-243 VCE Dumps 167Q&As Provided by Braindump2go[1-5]

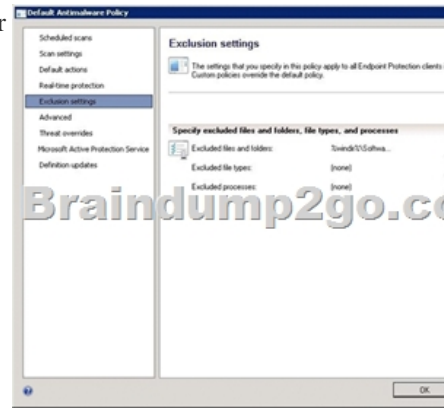
2016/09 New Microsoft 70-243: Administering and Deploying System Center 2012 Configuration Manager Exam Questions Released Today! Free Instant Download 70-243 Exam Dumps (PDF & VCE) 167Q&As from Braindump2go.com Today! 100% Real Exam Questions! 100% Exam Pass Guaranteed! 1. [2016/09 Latest 70-243 Exam Dumps (PDF & VCE) 167Q&As Download: <http://www.braindump2go.com/70-243.html> 2. [2016/09 Latest 70-243 Exam Questions & Answers: <https://drive.google.com/folderview?id=0B75b5xYLjSSNfkdreTRTTVPZRTBaMmMtbUFuU0RnNzBWNDYyOXNIUndGUEhzOTVabkFzdEk&usp=sharing> QUESTION 1 You recently migrated from System Center 2012 Configuration Manager to System Center 2012 Configuration Manager. Your network contains a client computer that runs the 64-bit version of Windows 7 and the 32-bit version of Windows 7. Some client computers have the Microsoft Application Virtualization (App-V) client installed. You have an Application named App1. You have a 64-bit version of App1, a 32-bit version of App1, and a virtual version of App1. You need to deploy the Application to all of the client computers. The solution must minimize the amount of administrative effort. What should you do? A. Create a new Application that has three different deployment types and create a target collection for each of the deployment types. B. Create a new Application that has three different deployment types and configure global conditions for each of the deployment types. C. Create a new package for each version of App1. D. Create a new Application for each version of App1. Answer: B Explanation: Applications contain multiple deployment types that contain the files and commands necessary to install the software. For example, deployment types for a local installation, a virtual application package or a version of the application for mobile devices. MSI 64, 32 deployment types



Deploy multiple type to multiple collection ( x64, x32, VirtualUserCollection) You don't choose to deploy a specific deployment type. Instead, you deploy the application itself. It's pretty simple in this case, with only one deployment type, as it's fairly obvious which one will be installed. But if you had multiple deployment types, you would need to specify rules to determine which one is

used. QUESTION 2 Your company uses System Center 2012 Configuration Manager with Microsoft Forefront Endpoint Protection integration. You deploy Forefront Endpoint Protection to all client computers. The company uses a management Application named App1. You discover that Forefront Endpoint Protection blocks App1. You need to ensure that App1 can run. How should you configure the Default Client Malware Policy? (Each correct answer presents a complete solution. Choose two.) A. Create a software restriction policy. B. Add a process exclusion. C. Add a file location exclusion. D. Modify the schedule scan settings. E. Click the Use behavior monitoring check box. Answer: BC Explanation: <http://technet.microsoft.com/en-us/library/hh508785.aspx>

How to Create and Deploy Antimalware Policies for Endpoint Protection in Configuration Manager



QUESTION 3 You have an Application named App1. You need to ensure that users in the finance department can install App1 by using the Application Catalog. What should you do? A. Create a required user deployment and target the deployment to all of the finance department users. B. Create a required user deployment and target the deployment to all of the client computers in the finance department. C. Create an available user deployment and target the deployment to all of the finance department users. D. Create an available user deployment and target the deployment to all of the client computers in the finance department. Answer: C

Explanation: By selecting "Available" it will be selectable for the users in the Application Catalog. The "Required" option would force the installation to all users in the finance department. QUESTION 4 Your network contains a System Center 2012 Configuration Manager environment. You deploy a Microsoft Office 2007 package to all client computers by using Configuration Manager. Your company purchases Office 2010. You need to ensure that all users can install Office 2010 from the Application Catalog. What should you do? A. Deploy a new package for Office 2010. B. Deploy Office 2010 by using a Group Policy Object (GPO). C. Update the Office 2007 source file and redeploy the package. D. Deploy a new Application for Office 2010. Answer: D

Explanation: <http://technet.microsoft.com/en-us/library/gg699369.aspx> Packages and Programs in Configuration Manager Microsoft System Center 2012 Configuration Manager continues to support packages and programs that were used in Configuration Manager 2007. You can use Microsoft System Center Configuration Manager Package Conversion Manager to convert packages and programs into Configuration Manager applications. Further information: <http://technet.microsoft.com/en-us/library/gg682125.aspx> Introduction to Application Management in Configuration Manager

QUESTION 5 You deploy Windows 7 by using Operating System Deployment (OSD). The development task sequence contains steps to install software updates and Applications. The amount of time required to deploy the Windows 7 image has increased significantly during the last six months. You need to recommend a solution to reduce the amount of time it takes to deploy the image. What should you recommend? (Choose all that apply.) A. Synchronize software updates before deploying the image. B. Use offline servicing for the image. C. Create a new automatic deployment rule. D. Add an additional Install Software Updates step to the deployment task sequence. E. Upgrade the image to Windows 7 SP1. Answer: BE

Explanation: [http://blogs.technet.com/b/inside\\_osd/archive/2011/04/18/configuration-manager-2012-offline-servicing-for-operating-system-images.aspx](http://blogs.technet.com/b/inside_osd/archive/2011/04/18/configuration-manager-2012-offline-servicing-for-operating-system-images.aspx) Configuration Manager 2012: Offline Servicing for Operating System Images In Configuration Manager 2012 there is a new feature for applying updates to operating system images while they are in the Configuration Manager library. This means any operating system image you see in the Operating Systems > Operating Systems Images node from the Software Library wunderbar can be updated with Component Based Servicing (CBS) updates. By updating an image in the Software Library instead of performing a new build and capture of the operating system image you will gain a few distinct advantages. You will be able to reduce the risk of vulnerabilities during operating system deployments and reduce the overall operating system deployment to the end user. You will also reduce the administrative effort to maintain your operating system images. The feature is applicable for Component Based Servicing (CBS) updates and for the following operating systems: Microsoft Windows Vista SP2 and later Microsoft Windows Server 2008 SP2 and later Microsoft Windows 7 RTM Microsoft Windows 2008 R2\* At the launch of ConfigMgr 2012 Beta 2 Microsoft Windows 7 SP1 and Windows Server 2008 R2 SP1 are not

supported. They will be supported with Configuration Manager 2012 RTM. !!!RECOMMEND!!! 1.|2016/09 Latest 70-243 Exam Dumps (PDF & VCE) 167Q&As Download:<http://www.braindump2go.com/70-243.html> 2.|2016/09 Latest 70-243 Exam Questions & Answers:

<https://drive.google.com/folderview?id=0B75b5xYLjSSNfkdreTRTTVpZRTBaMmMtbUFuU0RnNzBWNDYyOXNIUndGUEhzOTVabkFzdEk&usp=sharing>