

[Oct.-2016-NEW100% Valid Microsoft 70-467 PDF and VCE 189Q&As Provided by Braindump2go[NQ41-NQ46]

2016/10 Latest Microsoft 70-467: Designing Business Intelligence Solutions with Microsoft SQL Server Exam Questions Updated Today! Free Instant Download 70-467 Exam Dumps (PDF & VCE) 189Q&As from Braindump2go.com Today! **100% Real Exam Questions! 100% Exam Pass Guaranteed!** 1. | 2016/10 New 70-467 Exam Dumps (PDF & VCE) 189Q&As Download:

<http://www.braindump2go.com/70-467.html> 2. | 70-467 Exam Questions & Answers:

https://drive.google.com/folderview?id=0B9YP8B9sF_gNM1Z3aG9yTjZUYW8&usp=sharing QUESTION 41 You are creating a Multidimensional Expressions (MDX) calculation for Projected Revenue in a cube. For Product A, Projected Revenue is defined as 150 percent of the Total Sales of the product. For all other products, Projected Revenue is defined as 110 percent of the Total Sales of the product. You need to calculate the Projected Revenue as efficiently as possible. Which calculation should you use? (More than one answer choice may achieve the goal. Select the BEST answer.)

```
A CREATE MEMBER CurrentCube.[Measures].[Projected Revenue]
AS CASE WHEN (Product).[Product Name].CurrentMember.Name = "Product A"
THEN ([Measures].[Total Sales] * 1.5)
ELSE ([Measures].[Total Sales] * 1.1) END

B CREATE MEMBER CurrentCube.[Measures].[Projected Revenue]
AS ([Measures].[Total Sales] * 1.1)
SCOPE ([Product].[Product Name].MEMBERS, (Measures).[Projected Revenue]);
[Product].[Product Name].[Product A] = ([Measures].[Total Sales] * 1.5)
END SCOPE;

C CREATE MEMBER CurrentCube.[Measures].[Projected Revenue]
AS ([Measures].[Total Sales] * 1.1)
SCOPE ([Product].[Product Name].MEMBERS, (Measures).[Projected Revenue]);
THIS = ([Measures].[Total Sales] * 1.5)
END SCOPE;

D CREATE MEMBER CurrentCube.[Measures].[Projected Revenue]
AS ([Measures].[Total Sales]);
SCOPE ([Product].[Product Name].MEMBERS, (Measures).[Projected Revenue]);
IF ([Product].[Product Name].CurrentMember.Name = "Product A"
THEN ([Measures].[Total Sales] * 1.5)
END IF;
END SCOPE;
```

A. Option AB. Option BC. Option CD. Option D Answer: C QUESTION 42 You are defining a named set by using Multidimensional Expressions (MDX) in a sales cube. The cube includes a Customer dimension that contains a Geography hierarchy and a Gender attribute hierarchy. You need to return only the female customers in the Geography hierarchy. Which set should you use? (More than one answer choice may achieve the goal. Select the BEST answer.)

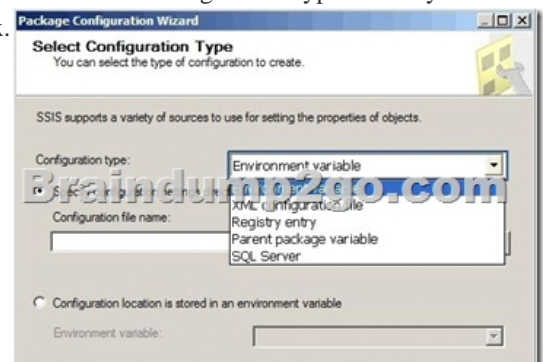
```
A Exists
{
[Customer].[Customer Geography].[Customer Name].Members,
[Customer].[Gender].[Female]
}

B Generate
{
[Customer].[Gender].[Female],
[Customer].[Model Name].[Model Name].Members, ALL
}

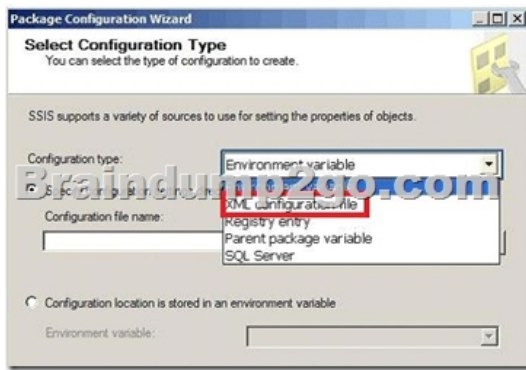
C Filter
{
[Customer].[Customer Geography].[Customer Name].Members,
{[Customer].[Gender].[Female], (Measures).[Sales Amount] > 0}
}

D CrossJoin
{
[Customer].[Customer Geography].[Customer Name].Members,
[Customer].[Gender].[Female]
}
```

A. Option AB. Option BC. Option CD. Option D Answer: A QUESTION 43 Hotspot Questions You are designing a SQL Server Integration Services (SSIS) package configuration strategy. The package configuration must meet the following requirements:- Include multiple properties in a configuration.- Force packages to load all settings in the configuration.- Support Encrypting File System (EFS) formats. You need to select the appropriate configuration. Which configuration type should you use? To answer, select the appropriate option from the drop-down list in the dialog box.



Answer:



Explanation: Package Configuration Types The following table describes the package configuration types.

- **SQL Server table** A table in a SQL Server database contains the configuration. The table can include multiple configurations.
- **XML configuration file** An XML file contains the configurations. The XML file can include multiple configurations.
- **Environment variable** An environment variable contains the configuration.
- **Registry entry** A Registry entry contains the configuration.
- **Parent package variable** A variable in the package contains the configuration. This configuration type is typically used to update properties in child packages.

Reference: Package Configurations

QUESTION 44 You are designing a SQL Server Integration Services (SSIS) solution that will load multiple Online Transactional Processing (OLTP) data sources into a SQL Server data mart. You have the following requirements:

- Ensure that the process supports the creation of an exception report that details possible duplicate key values, null ratios within columns, and column-length distributions of values.
- Ensure that users can generate the exception report in an XML format.
- Use the minimum development effort.

You need to design the SSIS solution to meet the requirements. What should you do? (More than one answer choice may achieve the goal. Select the BEST answer.)

A. Use a Data Profiling task. Use a Data Flow task to extract the XML output of the Data Profiling task into a SQL Server table. Query the table to view the exceptions.

B. Use Data Flow tasks to process the clean data.

C. Use a Data Profiling task. Read the exceptions in Data Profile Viewer.

D. Design a stored procedure that examines data for common dirty data patterns. Use an Execute SQL task.

Answer: C

Explanation: Ref:

<http://technet.microsoft.com/en-us/library/bb895263.aspx>

QUESTION 45 You are designing a SQL Server Integration Services (SSIS) solution. The solution will contain an SSIS project that includes several SSIS packages. Each SSIS package will define the same connection managers and variables. You have the following requirements:

- The deployment model must support changing the content of connection strings by using parameters at execution time.
- The deployment model must automatically log events to the SSISOB database.
- Maximize performance at execution time.

You need to design a solution that meets the requirements. What should you do? (More than one answer choice may achieve the goal. Select the BEST answer.)

A. Use a project deployment model. Modify connection manager properties to use project parameters.

B. Use a package deployment model. Save each SSIS package to a file share that can be accessed from all environments.

C. Use a package deployment model. Configure connections in an XML configuration file referenced by an environment variable that corresponds to the SQL Server environment of each SSIS package.

D. Use a project deployment model. Modify connection manager properties to use package parameters.

Answer: A

Explanation: Ref: <http://technet.microsoft.com/en-us/library/hh213290.aspx>

QUESTION 46 Drag and Drop Questions You are administering a SQL Server Analysis Services (SSAS) database on a server. The database hosts a financial cube based on a SQL Azure database. You need to grant read access to the financial cube for all users in the group USAPowerUsers. Which three actions should you perform in sequence? (To answer, move the appropriate actions from the list of actions to the answer area and arrange them in the correct order.)



Answer:



!!!RECOMMEND!!! 1.|2016/10 New 70-467 Exam Dumps (PDF & VCE) 189Q&As Download:
<http://www.braindump2go.com/70-467.html>2.|70-467 Exam Questions & Answers:
https://drive.google.com/folderview?id=0B9YP8B9sF_gNM1Z3aG9yTjZUYW8&usp=sharing