

[Oct.-2016-NEWValid Braindump2go Microsoft 70-467 Exam PDF Dumps 189q Offer[NQ11-NQ17]

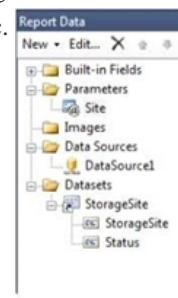
2016/10 Latest Microsoft 70-467: Designing Business Intelligence Solutions with Microsoft SQL Server Exam Questions Updated Today!Free Instant Download 70-467 Exam Dumps (PDF & VCE) 189Q&As from Braindump2go.com Today! 100% Real Exam Questions! 100% Exam Pass Guaranteed! 1.|2016/10 New 70-467 Exam Dumps (PDF & VCE) 189Q&As Download:

<http://www.braindump2go.com/70-467.html>2.|70-467 Exam Questions & Answers:

https://drive.google.com/folderview?id=0B9YP8B9sF_gNM1Z3aG9yTjZUYW8&usp=sharing QUESTION 11 You are designing a subscription strategy for a SQL Server Reporting Services (SSRS) report. You have an application that populates a table with user-specific subscription schedules and report formats. You need to ensure that users can receive reports by email according to their preferences. What should you do? (More than one answer choice may achieve the goal. Select the BEST answer.) A. Create a standard subscription for each record in the table.B. Create a data-driven subscription for each record in the schedule table.C.

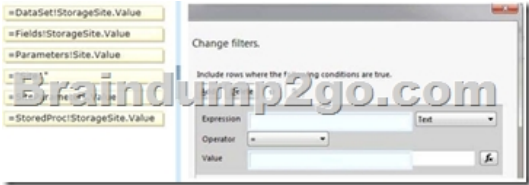
Create one data-driven subscription. Schedule the subscription to frequently retrieve user preferences.D. Create a standard subscription for each subscription schedule. Answer: C QUESTION 12 You are modifying a SQL Server Reporting Services (SSRS) report for a SQL Server Analysis Services (SSAS) cube. The report defines a report parameter of data type Date/Time with which users can filter the report by a single date. The parameter value cannot be directly used to filter the Multidimensional Expressions (MDX) query for the dataset. You need to ensure that the report displays data filtered by the user-entered value. You must achieve this goal by using the least amount of development effort. What should you do? (More than one answer choice may achieve the goal. Select the BEST answer.) A. Edit the dataset query parameter. Change the Value property of the report parameter to an expression that uses the same format as the date dimension member key value.B. Edit the dataset query parameter. Change the Name property of the dataset query parameter so that it points to a name value for each date dimension member.C. Edit the dataset query parameter. Create a subcube subquery that uses the StrToSet MDX function and accepts the report parameter value.D. Change the dataset query to Transact-SQL (T-SQL). Use the OPENROWSET function to query the cube. Output the cube results to the T-SQL query and use a Convert function to change the report parameter value into the same format as the date dimension member. Answer:

A QUESTION 13 You administer a SQL Server Reporting Services (SSRS) instance in native mode. You need to assign a predefined role that meets the following requirements:- Members of the role must be able to update shared data sources. - Members of the role must not be able to consume reports or manage subscriptions. - The role must provide only the minimum permissions required. Which role should you assign? (More than one answer choice may achieve the goal. Select the BEST answer.) A. the Content Manager roleA. the Read and Process roleB. the Publisher roleD. the Browser role Answer: C QUESTION 14 You are designing a strategy for an enterprise reporting solution that uses SQL Server Reporting Services (SSRS). Many of the SSRS reports will use common utilities and functions, including the following:- Report utility functions and business logic in code - Standardized report formatting properties such as fonts and colors for report branding Formatting may change and new functions may be added as the reporting solution evolves. You need to create a strategy for deploying the formatting and code across the entire enterprise reporting solution. You must also ensure that reports can be easily updated to reflect formatting and function changes. What should you do? (More than one answer choice may achieve the goal. Select the BEST answer.) A. Create a report as a template. Apply standardized formatting to the template. Store code in the Code section of the template.B. Build a web service that retrieves formatting properties and runs code. Call the web service through a report dataset.C. Store the formatting properties and code in database objects. Use stored procedures to populate a default value for report parameters and map each parameter to a corresponding formatting property.D. Create an assembly that contains formatting properties and code. Deploy the assembly on the Reporting Server and reference the assembly from each report. Answer: D QUESTION 15 Drag and Drop Questions You are designing a dataset for a SQL Server Reporting Services (SSRS) report. The report includes the report items displayed in the following graphic.

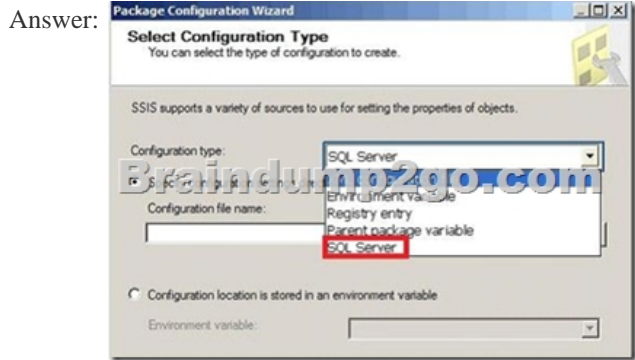
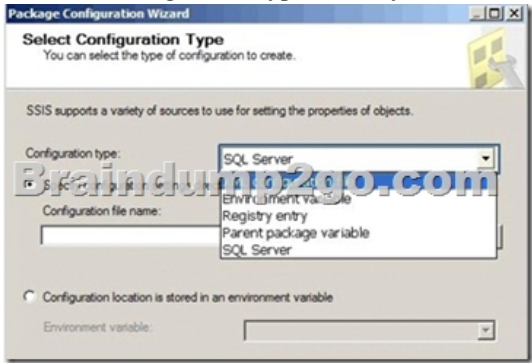


The dataset is sourced from a commonly used stored procedure in an inventory data mart hosted in a SQL Azure database. It returns

the status for all products across all storage sites. The report must display data for the storage site that is selected by the Site report parameter. You cannot change the stored procedure code. You need to filter the dataset to use only data specific to the selected site. How should you configure the filter? To answer, drag the appropriate expression or expressions to the correct location or locations in the answer area. (Answer choices may be used once, more than once, or not all.)



Explanation:Note:To set a filter on the datasetOpen a report in Design view.Right-click a dataset in the Report Data pane and then click Dataset Properties. The Dataset Properties dialog box opens.Click Filters. This displays the current list of filter equations. By default, the list is empty.Click Add. A new blank filter equation appears.In Expression, type or select the expression for the field to filter. To edit the expression, click the expression (fx) button.Box 1: Here we use the Fields expression.From the drop-down box, select the data type that matches the type of data in the expression you created in step 5.In the Operator box, select the operator that you want the filter to use to compare the values in the Expression box and theValue box. The operator you choose determines the number of values that are used from the next step.Box 2: we test for equality.In the Value box, type the expression or value against which you want the filter to evaluate the value in Expression.Box 3: we compare to the value of the Parameter named Site.Click OK. Reference: How to: Add a Filter (Reporting Services) QUESTION 16Hotspot QuestionsYou are designing a SQL Server Integration Services (SSIS) package configuration strategy. The package configuration must meet the following requirements:- Include multiple properties in a configuration.- Support several packages with different configuration settings. You need to select the appropriate configuration. Which configuration type should you use? To answer, select the appropriate option from the drop-down list in the dialog box.



Explanation:Package Configuration TypesThe following table describes the package configuration types.- SQL Server tableA table

in a SQL Server database contains the configuration. The table can include multiple configurations.- XML configuration fileAn XML file contains the configurations. The XML file can include multiple configurations.- Environment variableAn environment variable contains the configuration.- Registry entryA Registry entry contains the configuration.- Parent package variableA variable in the package contains the configuration. This configuration type is typically used to update properties in child packages.Reference: Package Configurations QUESTION 17You are designing a SQL Server Integration Services (SSIS) solution. The solution will contain an SSIS project that includes several SSIS packages. Each SSIS package will define the same connection managers and variables. You have the following requirements:- Ensure that the deployment model supports changing the content of connection strings by using parameters at execution time.- Ensure that the deployment model automatically starts from calls to the catalog.start_execution stored procedure in the SSISDB database.- Maximize performance at execution time.- Minimize development effort.You need to design a solution that meets the requirements. What should you do? (More than one answer choice may achieve the goal. Select the BEST answer.) A. Use a project deployment model. Modify connection manager properties to use project parameters. Ensure that the SSISDB database is created.B. Use a project deployment model. Configure connections in an XML configuration file referenced by an environment variable that corresponds to the SQL Server environment of each SSIS package.C. Use a package deployment model. Use a SQL Server package configuration with a common filter.Change the contents of the SSIS Configurations table at runtime.D. Use a package deployment model. Save each SSIS package to a file share that can be accessed from all environments. Answer: A !!!RECOMMEND!!! 1.[2016/10 New 70-467 Exam Dumps (PDF & VCE) 189Q&As Download:<http://www.braindump2go.com/70-467.html>2.[70-467 Exam Questions & Answers:https://drive.google.com/folderview?id=0B9YP8B9sF_gNM1Z3aG9yTjZUYW8&usp=sharing