

[Oct.-2016-UpdateValid Braindump2go Microsoft 70-417 Practice Exam 252q Offer[NQ16-NQ20

2016/10 New Microsoft 70-417: Upgrading Your Skills to MCSA Windows Server 2012 R2 Exam Questions Updated Today!Free Instant Download 70-417 Exam Dumps (PDF & VCE) 612Q&As from Braindump2go.com Today! 100% Real Exam Questions! 100% Exam Pass Guaranteed! 1.| 2016/10 Latest 70-417 Exam Dumps (PDF & VCE) 612Q&As Download: <http://www.braindump2go.com/70-417.html> 2.| 2016/10 Latest 70-417 Exam Questions & Answers: https://drive.google.com/folderview?id=0B9YP8B9sF_gNNi9VMTNzaklUbGc&usp=sharing QUESTION 16Drag and Drop QuestionYour network contains an Active Directory domain named contoso.com. All file servers in the domain run Windows Server 2012 R2. The computer accounts of the file servers are in an organizational unit (OU) named OU1. A Group Policy object (GPO) named GP01 is linked to OU1. You plan to modify the NTFS permissions for many folders on the file servers by using central access policies. You need to identify any users who will be denied access to resources that they can currently access once the new permissions are implemented. In which order should you perform the five actions? To answer, move all actions from the list of actions to the answer area and arrange them in the correct order.

Actions	Answer Area
Modify the Security settings of the shared folders on the file servers.	
Create a central access policy.	
Create a central access rule.	
In GPO1, modify the Audit Central Access Policy Staging setting and configure the Central Access Policy settings.	

Answer:

Actions	Answer Area
Modify the Security settings of the shared folders on the file servers.	Create a central access rule.
Create a central access policy.	Create a central access policy.
Create a central access rule.	Modify the Security settings of the shared folders on the file servers.
In GPO1, modify the Audit Central Access Policy Staging setting and configure the Central Access Policy settings.	Search for failure events in the security logs from the file servers.

QUESTION 17Drag and Drop QuestionYou have a server named Server2 that runs Windows Server 2012 R2. You need to configure the storage so that it appears in Windows Explorer as a drive letter on Server1. Which three actions should you perform in sequence? To answer, move the three appropriate actions from the list of actions to the answer area and arrange them in the correct order.

Actions	Answer Area
On Server1, create a new volume from Server Manager.	
On Server2, configure the iSCSI initiator to connect to target1.	
On Server2, create a new volume from Server Manager.	
On Server1, add an iSCSI initiator ID to target1.	
On Server2, add an iSCSI initiator ID to target1.	

Answer:

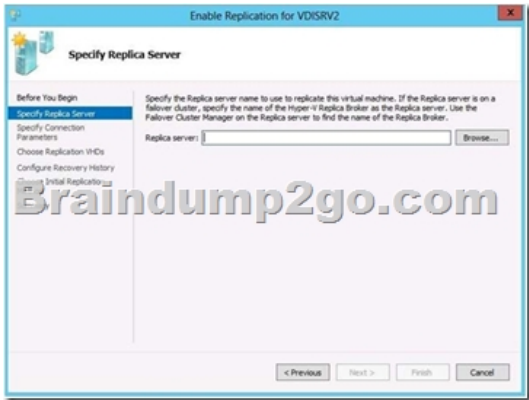
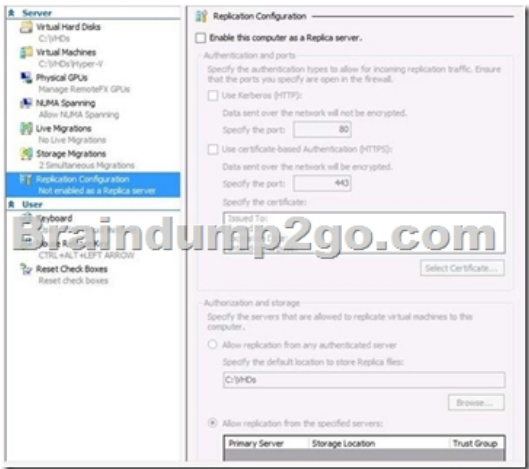
Actions	Answer Area
	On Server2, add an iSCSI initiator ID to target1.
On Server2, configure the iSCSI initiator to connect to target1.	On Server1, configure the iSCSI initiator to connect to target1.
	On Server1, create a new volume from Server Manager.
On Server2, create a new volume from Server Manager.	
On Server1, add an iSCSI initiator ID to target1.	

QUESTION 18Drag and Drop QuestionYour network contains an Active Directory domain named contoso.com. The domain contains a file server named Server1. All servers run Windows Server 2012 R2. All domain user accounts have the Division attribute automatically populated as part of the user provisioning process. The Support for Dynamic Access Control and Kerberos armoring policy is enabled for the domain. You need to control access to the file shares on Server1 based on the values in the Division

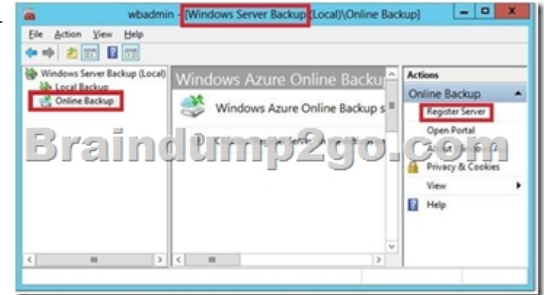
attribute and the Division resource property. Which three actions should you perform in sequence? To answer, move the three appropriate actions from the list of actions to the answer area and arrange them in the correct order.



QUESTION 19Your network contains two servers named Server1 and Server2 that run Windows Server 2012 R2. Both servers have the Hyper-V server role installed. Server1 and Server2 are located in different offices. The offices connect to each other by using a high-latency WAN link. Server2 hosts a virtual machine named VM1. You need to ensure that you can start VM1 on Server1 if Server2 fails. The solution must minimize hardware costs. What should you do? A. On Server2, install the Multipath I/O (MPIO) feature. Modify the storage location of the VHDs for VM1. B. From the Hyper-V Settings of Server1, modify the Replication Configuration settings. Enable replication for VM1. C. On Server1, install the Multipath I/O (MPIO) feature. Modify the storage location of the VHDs for VM1. D. From the Hyper-V Settings of Server2, modify the Replication Configuration settings. Enable replication for VM1. Answer: B Explanation: You first have to enable replication on the Replica server--Server1--by going to the server and modifying the "Replication Configuration" settings under Hyper-V settings. You then go to VM1-- which presides on Server2--and run the "Enable Replication" wizard on VM1.



QUESTION 20 You have a server named File1 that runs Windows Server 2012 R2. File1 has the File Server role service installed. You plan to back up all shared folders by using Microsoft Online Backup. You download and install the Microsoft Online Backup Service Agent on File1. You need to ensure that you use Windows Server Backup to back up data to Microsoft Online Backup. What should you do? A. From Computer Management, add the File1 computer account to the Backup Operators group. B. From the Services console, modify the Log On settings of the Microsoft Online Backup Service Agent. C. From Windows Server Backup, run the Register Server Wizard. D. From a command prompt, run `wbadmin.exe enable backup`. Answer: C Explanation: Download and install the Windows Azure Online Backup Agent After you create an account on the Windows Azure Online Backup website, you can download the Windows Azure Online Backup Agent and install it locally. An Online Backup node then appears in the navigation pane of the Windows Server Backup console, as shown in Figure 12-



If you prefer, you can also configure online backups from the Windows Azure Online Backup console, which becomes available after you install the agent. The Windows Azure Online Backup console provides exactly the same set of options as the Online Backup node in the Windows Server Backup console. Register server The next step is to register your server. Registering a server enables you to perform backups from that same server only. (Remember this point for the exam.) To register the server, from the Actions menu, select Register Server. The Register Server Wizard includes two configuration steps. First, you are given an opportunity to specify a proxy server if desired. Second, you are asked to provide a passphrase that will be used to encrypt your backup data and a location to save this passphrase in a file. You need to provide this passphrase when you perform a restore operation, so it's essential that you don't lose it. (Microsoft doesn't maintain a copy of your passphrase.) A Generate Passphrase option creates the passphrase for you automatically. After you register a server, new options for Online Backup appear in the Actions pane, including Schedule Backup, Recover Data, Change Properties, and Unregister Server. !!!RECOMMEND!!! 1. | 2016/10 Latest 70-417 Exam Dumps (PDF & VCE) 612Q&As Download: <http://www.braindump2go.com/70-417.html> 2. | 2016/10 Latest 70-417 Exam Questions & Answers: https://drive.google.com/folderview?id=0B9YP8B9sF_gNNi9VMTNzaklUbGc&usp=sharing