

## [OFFICIAL]Braindump2go 70-659 VCE Instant Download (21-30)

**MICROSOFT NEWS: 70-659 Exam Questions has been Updated Today! Get Latest 70-659 VCE and 70-659 PDF Instantly!**  
**Welcome to Download the Newest Braindump2go 70-659 VCE&70-659 PDF Dumps:**

<http://www.braindump2go.com/70-659.html> (161 Q&As) Do you want to pass Microsoft 70-659 Exam ? If you answered YES, then look no further. Braindump2go offers you the best 70-659 exam questions which cover all core test topics and certification requirements. All REAL questions and answers from Microsoft Exam Center will help you be a 70-659 certified! Exam Code: 70-659 Exam Name: TS: Windows Server 2008 R2, Server Virtualization Certification Provider: Microsoft [70-659 Dumps](#), [70-659 Book](#), [70-659 Study Guide PDF](#), [70-659 eBook](#), [70-659 Braindump](#), [70-659 eBook](#), [70-659 Exam Questions](#), [70-659 Exam Prep](#), [70-659 Dumps PDF](#), [70-659 Dumps Free](#), [70-659 Latest Dumps](#), [70-659 Practice Exam](#), [70-659 Practice Questions](#), [70-659 PDF](#), [70-659 VCE](#)

TS: Wind



Questions and  
Q&As

Updated: Dec 2

\$429.00 \$

PDF DEMO

CHECK

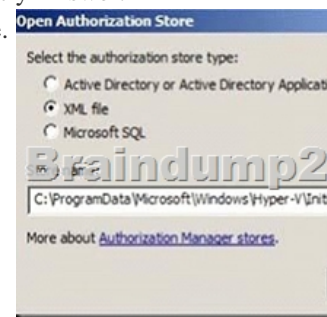
QUESTION 21 You use Hyper-V Server 2008 R2 and failover clustering to host several virtual machines (VMs). You need to place a disk in maintenance mode. Which Windows PowerShell cmdlet should you run? A. Suspend-ClusterResource B.

Stop-ClusterResource C. Set-ClusterResourceDependency D. Block-ClusterAccess Answer: A Explanation:

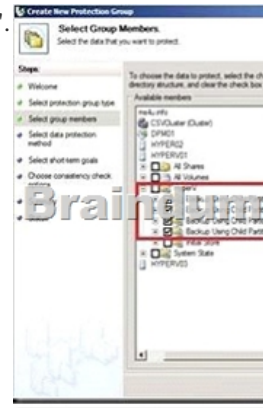
Suspend-ClusterResource: Turn on maintenance for a disk resource or Cluster Shared Volume so that you can run a disk maintenance tool without triggering failover. Block-ClusterAccess: Prevent the specified user or users from accessing a failover cluster. Stop-Cluster: Stop the Cluster service on all nodes in a failover cluster, which will stop all services and applications configured in the cluster. Add-ClusterResourceDependency : Add a resource to the list of resources that a particular resource depends on (using AND as the connector) within a failover cluster. Existing dependencies will remain in the list.

Set-ClusterResourceDependency : Specify the resources that a particular resource depends on within a failover cluster. Existing dependencies will be overwritten by the dependencies that you specify. Syntax Suspend-ClusterResource [-InputObject <psobject>] [-Name <string>] [-Cluster <string>] [-Force] [-RedirectedAccess] [-VolumeName <string>] [<CommonParameters>] Detailed Description This cmdlet applies to disks and Cluster Shared Volumes only. For Cluster Shared Volumes, turning on maintenance takes dependent resources offline, which interrupts client access. For other disks (LUNs) in cluster storage, turning on maintenance leaves dependent resources online. C:PS>Stop-Cluster cluster1 Description-----This command stops the Cluster service on all nodes in cluster1, which will stop all services and applications configured in the cluster. QUESTION 22 A company has a Windows server 2008 R2 Hyper-V server environment. You need to back up the Windows Authorization Manager (AzMan) policy. What should you back up? A. the InitialStore.ini file B. the InitialStore.xml file C. the System state D. the registry Answer: B

Explanation: Easy way is navigate to the location where InitialStore.xml is residing and manual backup the file.



Another way is by using DPM 2010. Normally we overlook the setting and click Next all the way. Let me show you the place where the Initial Store is? This picture is taken from my previous article. Concentrate looking at below the "red box".



Tick Initial Store will automatically backup AzMan configuration. The initial store contains the security permissions for Hyper-V's Authorization Manager (azman). This is an xml file located in %systemdrive%\ProgramData\Microsoft\Windows\Hyper-V. You would only need to perform a restore if this xml file becomes corrupt or is deleted somehow. Backing up virtual machines and the initial store are independent of each other. You only need to back up the initial store if you are using the Authorization Manager in Hyper-V and don't want to lose your settings. <http://www.ms4u.info/2011/06/backup-azman-using-dpm-2010.html>

Authorization Manager provides a flexible framework for integrating role-based access control into applications. It enables administrators who use those applications to provide access through assigned user roles that relate to job functions. Authorization Manager applications store authorization policy in the form of authorization stores that are stored in Active Directory Domain Services (AD DS), Active Directory Lightweight Directory Services (AD LDS), XML files, or Microsoft SQL Server databases. These policies are then applied at runtime. [http://technet.microsoft.com/en-us/library/cc726036\(WS.10\).aspx](http://technet.microsoft.com/en-us/library/cc726036(WS.10).aspx)

QUESTION 23 You have a windows server 2008 R2 Hyper-V server. The virtual machines (VMs) that are hosted on the server have directly attached physical disks. You need to back up the VMs and the Hyper-V configuration. Which two actions should you perform? (Each correct answer presents part of the solution. Choose two)

A. Perform a critical-volume backup on the host server. B. Perform a full server backup on the VM. C. Perform a critical-volume backup on the VM. D. Perform a full server backup on the host server.

Answer: AB

Explanation: The jury is out on this one! (AB) You need to back up the Hyper-V configuration. A: Perform a critical-volume backup on the host server. Because VMs have directly attached physical disks so don't need full backup for server. You need to back up the VMs have directly attached physical disks. B: Perform a full server backup on the VM. Backing Up Hyper-V Virtual Machines Understanding the backup options and considerations The backup integration service and the Hyper-V Volume Shadow Copy Service (VSS) Writer provide the mechanism for backing virtual machines as well as system-wide settings that apply to Hyper-V. There are two basic methods you can use to perform a backup. You can:- Perform a backup from the server running Hyper-V. Using this method to perform a full server backup is the recommended method because it captures more data than the other method. If the storage is compatible with Hyper-V and the Hyper-V VSS Writer, you can perform a full server backup that helps protect all of the data required to fully restore the server. The data included in such a backup includes the configuration of virtual machines and virtual networks, snapshots associated with the virtual machines, and virtual hard disks used by the virtual machines. As a result, using this method can make it easier to recover the server if the need arises, because you will not have to recreate virtual machines or system-wide settings such as virtual networks.- Perform a backup from within the guest operating system of a virtual machine. This method is useful when you need to back up data from storage that is not supported by the Hyper-V VSS writer. Storage considerations As you plan your backup strategy, consider the compatibility between the storage and backup solutions:- Virtual hard disks offer the best compatibility and can be stored on many types of physical media. For more information about the types of storage you can use with Hyper-V, see "Hardware Considerations" in the Hyper-V Planning and Deployment Guide on TechNet (<http://technet.microsoft.com/en-us/library/cc816844.aspx>).- Network-based storage such as shared folders should be used with caution. If the network-based storage is unavailable when a backup is attempted, the backup will fail. - Physical disks that are directly attached to a virtual machine (sometimes referred to as 'pass-through disks') cannot be backed up by the Hyper-V VSS writer. As a result, this type of disk will not be included in any backup performed by a backup program that uses the Hyper-V VSS writer. In this situation, you would need to use some other process to back up the physical disk. For example, you could run a backup of the data on the iSCSI storage from a backup application running in the guest operating system. - Storage accessed from a virtual machine by using an Internet SCSI (iSCSI) initiator within the guest operating system will not be included in a backup of the

physical computer. In this scenario, you must use another process to back up the data from the iSCSI-based storage before you perform a full server backup. For example, you could run a backup of the data on the iSCSI storage from a backup application running in the guest operating system.- iSCSI-based storage is supported for backup by the Hyper-V VSS writer when the storage is connected through the parent partition and the storage is used for virtual hard disks.

<http://blogs.technet.com/b/virtualization/archive/2008/08/29/backing-up-hyper-v-virtual-machines.aspx>Physical disks that are directly attached to a virtual machine. These disks cannot be backed up by the Hyper-V VSS writer. As a result, this type of disk will not be included in any backup performed by a backup program that uses the Hyper-V VSS writer. In this situation, you would need to use some other process to back up the physical disk, such as running a backup application within the guest operating system.

[http://technet.microsoft.com/en-us/library/dd252619\(v=ws.10\).aspx](http://technet.microsoft.com/en-us/library/dd252619(v=ws.10).aspx)Physical disks that are directly attached to a virtual machine. These disks cannot be backed up by the Hyper-V VSS writer. As a result, this type of disk will not be included in any backup performed by a backup program that uses the Hyper-V VSS writer. In this situation, you would need to use some other process to back up the physical disk, such as running a backup application within the guest operating system. Perform a backup from the server running Hyper-V. We recommend that you use this method to perform a full server backup because it captures more data than the other method. If the backup application is compatible with Hyper-V and the Hyper-V VSS writer, you can perform a full server backup that helps protect all of the data required to fully restore the server, except the virtual networks. The data included in such a backup includes the configuration of virtual machines, snapshots associated with the virtual machines, and virtual hard disks used by the virtual machines. As a result, using this method can make it easier to recover the server if you need to, because you do not have to recreate virtual machines or reinstall Hyper-V. However, virtual networks are not included in a full server backup. You will need to reconfigure the virtual networking by recreating the virtual networks and then reattaching the virtual network adapters in each virtual machine to the appropriate virtual network. As part of your backup planning, make sure you document the configuration and all relevant settings of your virtual network if you want to be able to recreate it.

<http://technet.microsoft.com/en-us/library/dd252619%28v=ws.10%29.aspx> QUESTION 24A company has a server that runs Microsoft System Center Virtual Machine Manager (VMM) 2008 R2, System Center Data Protection manager (DPM) 2010, and Windows Server 2008 R2 with Hyper-V. A Hyper-V host has a virtual machine (VM) that uses a basic disk. You need to perform a backup of the VM configuration and its virtual hard disk while minimizing downtime. What should you do? A. Perform an offline backup by using DPM. B. Perform an online backup by using DPM. C. Perform a system state backup by using Windows Server Backup. D. Perform a VMM database backup by using VMM. Answer: B Explanation: Backing up Hyper-V Host-Based Backups

One exciting benefit of server virtualization is the prospect of no longer having to individually back up the virtualized systems. Now that these systems are simply files living on a host's file system, you can just back up the files and call it a day, right? Not exactly. Because these are live computers consisting of in-memory data, data on disk, system configurations, and open files, there are a few things to consider. So how do we ensure backup data consistency given all these moving parts? A significant improvement to the Windows Server backup story came with Windows Server 2003 and the advent of VSS, which provides a standard set of extensible APIs that VSS writers (hooks in applications and services that help provide consistent shadow copies) use in order to create backups of open files and applications. With the help of the VSS service, providers, and writers, the backup application can generate a point-in-time copy of a volume very quickly, one that the application is aware of and can process appropriately. Hyper-V comes with its own VSS writer that allows software makers to create compelling backup solutions. The writer lets backup applications achieve host-based VSS backups of running VMs. If the operating system running within the VM has the Hyper-V Integration Components installed as well as the VSS service (available in Windows XP SP1 and Windows Server 2003 and later), the host-based backup will occur as if it were run inside the guest; the backup will be performed with the VM running and the data will be consistent (see Figure 4).

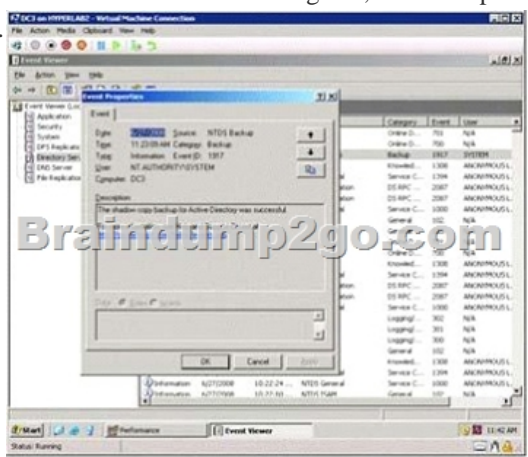
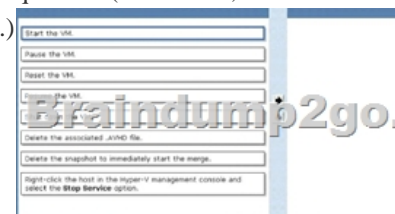


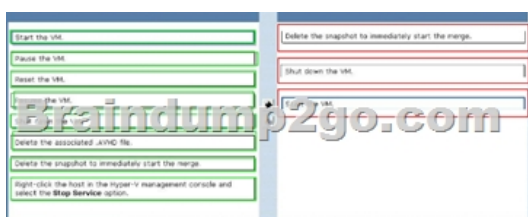
Figure 4 VSS backup (Click the image for a larger view) However, if the guest operating system does not support the Integration Components or VSS, the backup process requires that the guest machine be put into a saved state and that a host-based VSS snapshot is taken of VM data files that can be used for point-in-time recovery. Saved-state VSS snapshots will incur some VM downtime (this can typically be limited to 5-10 minutes), with full backup-to-tape procedures taking place against the VSS copy of the data. Guest-Based Backups In a physical environment, servers and applications need to be backed up on an individual basis, and such backups can certainly continue in a virtualized datacenter. In this situation, the same considerations need to be taken into account when backing up a VM, such as network capacity requirements for network-based backups and performance impact to the system during the backup window. With guestbased backups, you can choose to have a dedicated physical NIC in the host that is bound to a virtual network that all guests use. Windows Server Backup Included with Windows Server 2008 is the VSS-capable Windows Server Backup (WSB), which can be used to perform Hyper-V host-and guest-based backups of your VMs. Because it's fully VSS-capable, it can perform host-based backups of your running VMs, which of course is preferable. But if you have VMs without the Integration Components installed, VSS will not be used. In that case, you have a couple of options from which to choose. You can still use WSB to back up a VM that does not have the Integration Components installed, which means the VM's state will be saved and then the backup will grab the VM's virtual disks and configuration files. However, this may not be desirable with an application such as Exchange because the application will not be aware a backup has run and application logs will not be truncated. Moreover, downtime will occur on the VM, which will vary depending on how long the backup takes. Alternatively, a backup can be run from inside the VM just as if it were a physical machine using either NTBackup or WSB, depending on the VM's OS. Let's see how to use WSB for supported guests that have the Integration Components installed. Backing up VMs with WSB Hyper-V does not automatically register its VSS writer for use with WSB. You must manually add the registry key and value shown in Figure 5 before WSB will support a Hyper-V backup. You can add them via the command line, like so: Copy Codereg add "HKLMSoftwareMicrosoftwindows ncurrentversionWindowsServerBackupApplication Support{66841CD4-6DED-4F4B-8F17-FD23F8DDC3DE}" reg add "HKLMSoftwareMicrosoftwindows nt currentversionWindowsServerBackupApplicationSupport{66841CD4-6DED-4F4B-8F17-FD23F8DDC3DE}" /v "Application Identifier" /t REG\_SZ /d Hyper-v QUESTION 25 You take daily snapshots of a virtual machine (VM). You need to restore the state of the VM as it was three days ago onto another host server and minimize the storage space requirements. What should you do first? A. Export the VM. B. Export all snapshots. C. Export only one snapshot. D. Merge all snapshots. Answer: A Explanation: Understanding Hyper-V Snapshots So what is a Snapshot exactly. A Snapshot in Hyper-V is basically a spot in time where the current running configuration of the Virtual Machines is saved to a Snapshot Differencing Disk file (AVHD), from which you can return to from the future. This point in time is linked back to the original VHD Base disk. When you take another Snapshot it links to the first snapshot which links the the Base VHD (like a daisy chain).

<http://networkfoo.org/server-infrastructure/recovering-your-virtual-machine-how-manually-merge-hypervsnapshots-back-one>  
<http://social.technet.microsoft.com/Forums/is/winserverhyperv/thread/6ca61c0b-70a9-4cc2-a012-331098eba738>  
[http://blogs.msdn.com/b/virtual\\_pc\\_guy/archive/2008/08/26/hyper-v-export-import-part-1.aspx](http://blogs.msdn.com/b/virtual_pc_guy/archive/2008/08/26/hyper-v-export-import-part-1.aspx)

QUESTION 26 Drag and Drop Question You create a snapshot of a running virtual machine (VM) before installing a new application. You receive an alert that the host is running low on disk space on the volume where you took a snapshot of the VM. You need to free up disk space on the volume while ensuring that future restarts of the VM are successful. Which three actions should you perform in sequence? (To answer, move the appropriate actions from the list of actions to the answer area and I arrange them in the correct order.)



Answer:





**QUESTION 27** Your virtual environment includes a Windows Server 2008 R2 Hyper-V failover cluster. You manage the environment by using Microsoft System Center Virtual Machine Manager (VMM) 2008 R2. You need to configure the live migration network priorities for all virtual machines (VMS). What should you do? A. In Failover Cluster Manager, edit the properties of a single VM. B. In Hyper-V Manager, take each VM offline and edit the settings of each VM. C. Enable Cluster Shared Volumes (CSVs). D. In Virtual Network Manager, edit the properties of the virtual network. Answer: A Explanation: Managing the network used for Cluster Shared Volumes Failover clusters include a setting to prioritize the networks used for communication between the nodes in the cluster and for the network used for CSV traffic. You can identify the network used for CSV traffic and change the settings of the network using the Windows PowerShell cmdlet, Get-ClusterNetwork. Each network in a cluster has two settings for network prioritization ?Metric and AutoMetric. The Metric setting is used to determine the priority of the network (the network with the lowest value is the most preferred for CSV). The AutoMetric setting identifies whether the Metric setting was set manually or automatically by the failover cluster. For private networks, the Metric settings are between 1000 and 10,000, and for public networks, the Metric settings start at 10,000. Live migration will be attempted in the order of the networks specified in the list of cluster networks. If the connection to the destination node using the first network is not successful, the next network in the list is used until the complete list is exhausted, or there is a successful connection to the destination node using one of the networks. Initiate a live migration of a virtual machine You can use either Failover Cluster Manager or PowerShell to initiate live migration to move a virtual machine from one node to another node in a failover cluster. The amount of time it takes to move a virtual machine using live migration is dependent on the following items: The network connection speed and bandwidth that is available between the source cluster node and the destination cluster node. The load on the source cluster node and the destination cluster node. The amount of RAM configured for the virtual machine. **QUESTION 28** Your company has a Microsoft Hyper-V Server 2008 failover cluster and a Microsoft Hyper-V Server 2008 R2 failover cluster. You manage the virtual environment by using Microsoft System center Virtual Machine Manager (VMM) 2008 R2. You need to ensure that you can migrate child partitions between the failover clusters. What are two possible methods that you can use to achieve this goal? (Each correct answer presents a complete solution. Choose two.) A. network migration B. live migration C. SAN migration D. quick migration Answer: AC Explanation: Migrate child partitions between failover clusters- Network- SAN


[http://technet.microsoft.com/en-us/library/ff182337\(v=WS.10\).aspx](http://technet.microsoft.com/en-us/library/ff182337(v=WS.10).aspx) **QUESTION 29** Your company has a Microsoft Hyper-V Server 2008 R2 environment. You manage the virtual environment by using Microsoft System Center Virtual Machine Manager (VMM) 2008 R2. You manage MAC addresses in Hyper-V by using the MinimumMacAddress and MaximumMacAddress registry keys. The company is experiencing a high number of MAC address collisions. You need to lower the number of collisions, provide room for growth, and lower the administration requirements for MAC addresses. What should you do first? A. Change the MaximumMacAddress registry key on each host server to a higher number in the first three octets. B. Remove the MinimumMacAddress and MaximumMacAddress registry keys on each host server, and restart the Virtual Machine Management Service. C. Change the MaximumMacAddress registry key on each host server to a higher number in the last three octets. D. Change the MinimumMacAddress registry key on each host server to a lower number in the last three octets. Answer: B Explanation:

<http://www.virtualizationadmin.com/articles-tutorials/microsoft-hyper-v-articles/networking/mac-address-poolduplication-hyper-v.html>  
<http://buildyourwindows.blogspot.com.au/2011/11/hyper-v-mac-addresses-duplication-org> **QUESTION 30** You install Windows Server 2008 R2 Enterprise (Full Installation). You need to add the Hyper-V role to the server. What are two possible ways to achieve this goal? (Each correct answer presents a complete solution. Choose two.) A. Run the start /w hvconfig command. B. Run the start /w ocsetup Microsoft-Hyper-V command. C. Run the Add-WindowsFeature Hyper-V PowerShell cmdlet. D. Run the Add-WindowsFeature RSAT-Hyper-V PowerShell cmdlet. Answer: BC Explanation: You can install Hyper-V on either a full installation or a Server Core installation. You can use Server Manager to install Hyper-V on a full installation, as described in the following procedure. To install on a Server Core installation, you must perform the installation from a command prompt. Run the following command: Start /w ocsetup Microsoft-Hyper-V Windows PowerShell cmdlets for Server Manager Windows PowerShell cmdlets for Server Manager accept parameters to install or remove one or more roles, role services, and features that are separated by commas. The following three cmdlets let you install, remove, or view information about available roles by using Windows PowerShell. For more information about and examples of how to use any of these cmdlets, in a Windows PowerShell session into which the Server Manager module is loaded, enter Get-Help cmdlet\_name -full, in which cmdlet\_name represents one of the following values. Add-WindowsFeature Installs specified roles, role services, and features on the computer. For more information about how to add roles, role services, and features by using this cmdlet, see Adding Server Roles and Features. Get-WindowsFeature Returns a list of all roles, role services, and features that are available for installation on the computer, and displays by using check boxes ([X]) those that are installed. The Get-WindowsFeature cmdlet also returns a list of the command names that you provide in

the Add-WindowsFeature and Remove-WindowsFeature cmdlets when you want to add or remove roles, role services, and features. Results of the Get-WindowsFeature cmdlet can be piped into either of the other two Server Manager cmdlets, or into cmdlets that run scans for Best Practices Analyzer, for example. Remove-WindowsFeature Removes specified roles, role services, and features from the computer. For more information about how to remove roles, role services, and features by using this cmdlet

Braindump2go Guarantee:Pass-Certification 70-659 offers absolute risk free investment opportunity, values your timr and money! Braindump2go latest 70-659 Real Exam Dumps - Your success in 70-659 Exam is certain! Your belief in our 70-659 Exam Dumps is further strengthened with 100% Money Back Promise from Braindump2go!

**TS: Windows Server 2008 R2, Server Virtualization: 70-659**



**Product Description Exam Number/Code: 70-659**

**Exam Number/Code: 70-659**

"TS: Windows Server 2008 R2, Server Virtualization", also known as 70-659 Certification. With the complete collection of questions and answers, Braindump2go assembled to take you through 161 Q&As to your 70-659 Exam preparation resources, you will cover every field and category in Microsoft MCITP helping your successful Microsoft Certification.

**Free Demo Download**

Braindump2go offers free demo for 70-659 exam (TS: Windows Server 2008 R2, Server Virtualization). You can check out the interface, question quality and usability of exams before you decide to buy it.

☒ **Printable PDF**   ☒ **Premium VCE + VCE Simulator**

**Questions and Answers : 161 Q&As**

Updated: Dec 22, 2015

~~\$429.99~~   **\$99.99**

[PDF DEMO](#)

[CHECK OUT](#)

FREE DOWNLOAD: NEW UPDATED 70-659 PDF Dumps & 70-659 VCE Dumps from Braindump2go:  
<http://www.braindump2go.com/70-659.html> (161 Q&As)