

[Sep-2016-NEW Exam Pass 100% !Microsoft 70-532 VCE Dumps 105q Instant Download[NQ46-NQ50]

2016/09 New Microsoft 70-532 Exam Questions Updated Today! Instant Free Download 70-532 Exam Dumps(PDF & VCE)105Q&As from Braindump2go.com Today!100% Real Exam Questions! and 100% Exam Pass Guaranteed!Mix Questions: 1.|2016/09 New 70-532 Exam Dumps(PDF & VCE)105Q&As Download: <http://www.braindump2go.com/70-532.html> 2.|2016/09 New 70-532 Exam Questions & Answers:

<https://drive.google.com/folderview?id=0B75b5xYLjSSNfjNITVBrTzd6YmtmOVQ3aHZDYnpNNzAzZTJqLWVLU3JqWDJPSzR4b1hkd2M&usp=sharing> QUESTION 46Hotspot QuestionYou store JSON data in a blob by using the Azure Blob service. Web applications access the JSON data by using client-side JavaScript calls.JSON data is stored in a container that is configured to allow anonymous access. Web applications that are allowed to make updates to the data have access to any necessary shared access signatures (SASs) and storage keys.You configure one Cross-Origin Resource Sharing (CORS) rule for the <https://fabrikam.com> domain and then run the following method. Line numbers are provided for reference only.

```
01 void ConfigureBlobCorsRules(CloudBlobClient blobClient)
02 {
03     var blobServiceProperties = blobClient.GetServiceProperties();
04     var partnerCorsRule = new CorsRule();
05     partnerCorsRule.AllowedOrigins.Add("https://contoso.com");
06     partnerCorsRule.AllowedMethods = CorsHttpMethods.Post | CorsHttpMethods.Put;
07     partnerCorsRule.ExposedHeaders.Add("");
08     partnerCorsRule.AllowedHeaders.Add("");
09     publicCorsRule = new CorsRule();
10     publicCorsRule.AllowedOrigins.Add("");
11     publicCorsRule.AllowedMethods = CorsHttpMethods.Get;
12     publicCorsRule.ExposedHeaders.Add("");
13     publicCorsRule.AllowedHeaders.Add("");
14     blobServiceProperties.Cors.CorsRules.Add(publicCorsRule);
15     blobClient.SetServiceProperties(blobServiceProperties);
16 }
17 }
```

For each of the following statements, select Yes if the statement is true. Otherwise, select No.

Answer Area	Yes	No
The CORS rule that was previously configured for https://fabrikam.com is no longer in effect after this method runs.	<input type="radio"/>	<input type="radio"/>
Partners from the https://contoso.com domain can access the configured storage service by using the HTTP HEAD operation.	<input type="radio"/>	<input type="radio"/>
Partners from the https://contoso.com domain can access the configured storage service by using the HTTP GET operation.	<input type="radio"/>	<input type="radio"/>

Answer:

Answer Area	Yes	No
The CORS rule that was previously configured for https://fabrikam.com is no longer in effect after this method runs.	<input checked="" type="radio"/>	<input type="radio"/>
Partners from the https://contoso.com domain can access the configured storage service by using the HTTP HEAD operation.	<input checked="" type="radio"/>	<input type="radio"/>
Partners from the https://contoso.com domain can access the configured storage service by using the HTTP GET operation.	<input type="radio"/>	<input checked="" type="radio"/>

QUESTION 47You develop a web application that will use the Azure Table service.The web application will store entities in the form of XML data within a single table.The web application must support high traffic throughput.You need to avoid exceeding the throttle limit for the table.Which two actions should you take? Each correct answer presents part of the solution. A. Add additional partition keys to the table.B. Batch transactions for entities that are in the same partition group in the table.C. Compress the entities before storing them in the table.D. Store the entities in JSON format. Answer: BD QUESTION 48You are managing an application. The application uses data that is stored in an Azure SQL database.You must be able to reset the application to the state that existed on any day in the previous 35 days.You need to choose a backup solution.What should you do? A. Run SQL replication on the SQL database once a day.B. Use Microsoft Azure SQL Database Point in Time RestoreC. Use the SQL Server Data-Tier Application Framework to build a data-tier application (DAC) file once a day.D. Use the bcp utility to export data to an Azure page blob once a day. Answer: B QUESTION 49Hotspot QuestionTailspin Toys uses a website to manage its inventory. The website is hosted on Azure. You are writing a Windows Store app that uses data from the blob storage.You need to retrieve an image from the following URI:<https://tailspintoys.blob.core.windows.net/Trains/Caboose2.jpg>.How should you complete the relevant code? To answer, select the appropriate code segments in the answer area.

Answer Area

```
CloudStorageAccount storageAccount = CloudStorageAccount.Parse(
    CloudConfigurationManager.GetSetting("StorageConnectionString"));
CloudBlobClient blobClient = storageAccount.
    (
        BlobEndpoint
        FileEndpoint
        CreateCloudBlobClient
        CreateCloudFileClient
    );

CloudBlobContainer blobContainer =
    (
        Client
        ("trains")
        GetBlobReference
        GetDirectoryReference
    );

CloudBlockBlob myBlob =
    blobContainer.
    ("Caboose2.jpg");
    GetBlockBlobReference
    GetDirectoryReference

using (var fileStream = System.IO.File.OpenWrite
    (@path\myfile))
{
    myBlob.DownloadToStream(fileStream);
}
```

Answer:

Answer Area

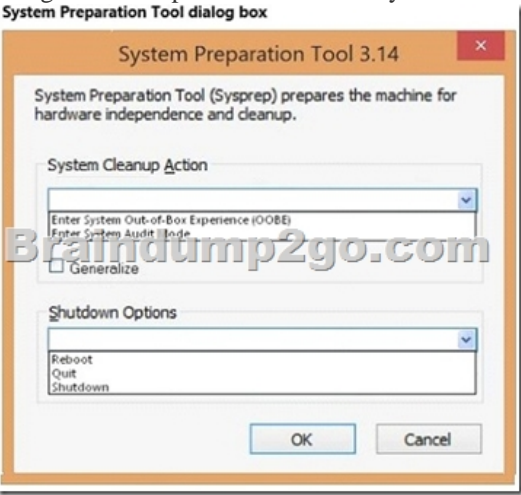
```
CloudStorageAccount storageAccount = CloudStorageAccount.Parse(
    CloudConfigurationManager.GetSetting("StorageConnectionString"));
CloudBlobClient blobClient = storageAccount.
    (
        BlobEndpoint
        FileEndpoint
        CreateCloudBlobClient
        CreateCloudFileClient
    );

CloudBlobContainer blobContainer =
    (
        Client
        ("trains")
        GetBlobReference
        GetDirectoryReference
    );

CloudBlockBlob myBlob =
    blobContainer.
    ("Caboose2.jpg");
    GetBlockBlobReference
    GetDirectoryReference

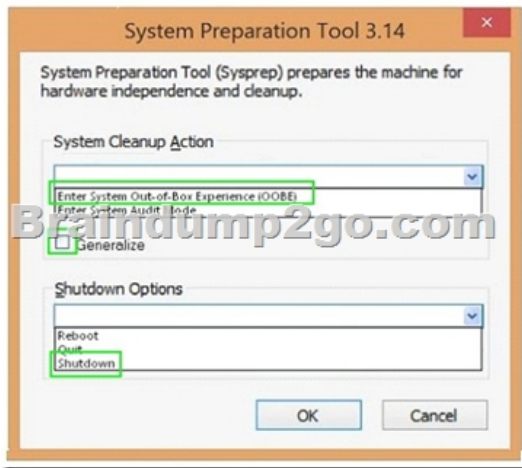
using (var fileStream = System.IO.File.OpenWrite
    (@path\myfile))
{
    myBlob.DownloadToStream(fileStream);
}
```

QUESTION 50Hotspot QuestionYou have an existing server that runs Windows Server.You plan to create a base image of this server. You will use this base image to prepare several virtual servers for future use. After the base image is prepared, you will capture it by using the Azure management portal.You must use the System Preparation Tool (Sysprep) to prepare the server so that the base image can be captured.You need to prepare the server so that the base image can be captured.What should you do? To answer, configure the appropriate options in the dialog box in the answer area.



Answer:

System Preparation Tool dialog box



!!!RECOMMEND!!! 1.Braindump2go |2016/09 New 70-532 Exam Dumps(PDF & VCE) 105Q&As Download:
<http://www.braindump2go.com/70-532.html> 2.Braindump2go |2016/09 New 70-532 Exam Questions & Answers:
<https://drive.google.com/folderview?id=0B75b5xYLjSSNfjNITVBrTzd6YmtmOVQ3aHZDYnpNNzAzZTJqLWVLU3JqWDJPSzR4b1hkd2M&usp=sharing>