

## Using Latest Braindump2go 70-411 Exam Dumps Try to Attend 70-411 Exam Pass 100% OR Full Money Back! (191-200)

MICROSOFT OFFICIAL: New Updated 70-411 Exam Questions from Braindump2go 70-411 PDF Dumps and 70-411 VCE Dumps! Welcome to Download the Newest Braindump2go 70-411 VCE&PDF Dumps:

<http://www.braindump2go.com/70-411.html> (322 Q&As) 2015 New Updated 70-411 Exam Dumps Questions and Answers are all from Microsoft Official Exam Center! Some new questions added into this new released 70-411 Dumps! Download 70-411 Exam Dumps Full Version Now and Pass one time! Exam Code: 70-411 Exam Name Administering Windows Server 2012 Certification Provider: Microsoft Corresponding Certifications: MCSA, MCSA: Windows Server 2012, MCSE, MCSE: Desktop Infrastructure, MCSE: Private Cloud, MCSE: Server Infrastructure Keywords: 70-411 Dumps, 70-411 Microsoft Exam Questions, 70-411 VCE, 70-411 PDF, 70-411 Practice Exams, 70-411 Practice Tests, 70-411 Book, 70-411 Study Guide

Administering Windows Server 2012 R2



**Product Description Exam Number**

**Exam Number/Code: 70-411**

"Administering Windows Server 2012 R2 Exam Certification. With the complete collection of assembled to take you through 322 Q&As to resources, you will cover every field and cat your successful Microsoft Certification.

**Questions and Answers : 322 Q&As**

Updated: Sep 14, 2015

~~\$429.99~~ **\$99.99**

[PDF DEMO](#)

[CHECK OUT](#)

**Free Demo Download**

Braindump2go offers free demo for 70-411 Exam). You can check out the interface, que before you decide to buy it.

☒ Printable PDF ☒ Premium VCE +

QUESTION 191 Your network contains an Active Directory domain named contoso.com. The domain contains a server named Server1. Server1 runs Windows Server 2012 R2. You create a group Managed Service Account named gservice1. You need to configure a service named Service1 to run as the gservice1 account. How should you configure Service1? A. From Windows PowerShell, run Set-Service and specify the -PassThrough parameter. B. From a command prompt, run sc.exe and specify the config parameter. C. From Windows PowerShell, run Set-Service and specify the -StartupType parameter. D. From a command prompt, run sc.exe and specify the privs parameter. Answer: B Explanation: A. General settings only allow you to stop, start and set type/parameters B. Set-Service provides a way for you to change the Description, StartupType, or DisplayName of a service C. Modifies service configuration D. Sets the response/action on service failure

<http://windows.microsoft.com/en-us/windows-vista/using-system-configuration>

<http://technet.microsoft.com/en-us/library/ee176963.aspx> [http://technet.microsoft.com/en-us/library/cc990290\(v=ws.10\).aspx](http://technet.microsoft.com/en-us/library/cc990290(v=ws.10).aspx)

[http://technet.microsoft.com/en-us/library/cc738230\(v=ws.10\).aspx](http://technet.microsoft.com/en-us/library/cc738230(v=ws.10).aspx)

QUESTION 192 Hotspot Question Your network contains an Active Directory domain named contoso.com. All client computers are configured as DHCP clients. You link a Group Policy object (GPO) named GPO1 to an organizational unit (OU) that contains all of the client computer accounts. You need to ensure that Network Access Protection (NAP) compliance is evaluated on all of the client computers. Which two settings should you configure in GPO1? To answer, select the appropriate two settings in the answer area.

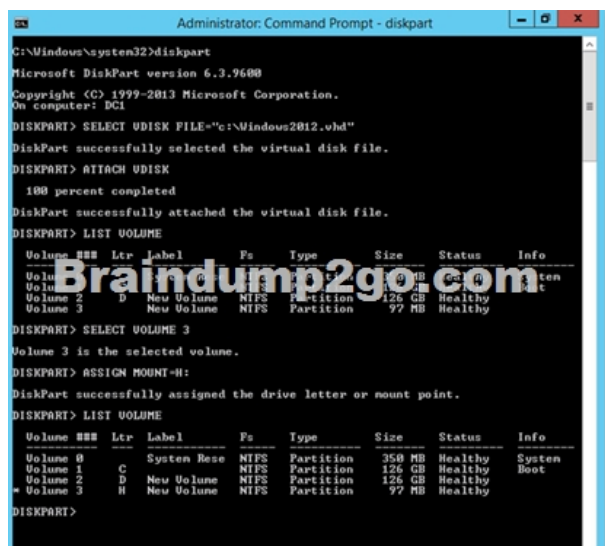


Answer:



QUESTION 193 Your network contains an Active Directory domain named contoso.com. All client computers run Windows Vista Service Pack 2 (SP2). All client computers are in an organizational unit (OU) named OU1. All user accounts are in an OU named OU2. All users log on to their client computer by using standard user accounts. A Group Policy object (GPO) named GPO1 is linked to OU1. A GPO named GPO2 is linked to OU2. You need to apply advanced audit policy settings to all of the client computers. What should you do? A. In GPO1, configure a startup script that runs auditpol.exe. B. In GPO2, configure a logon script that runs auditpol.exe. C. In GPO1, configure the Advanced Audit Policy Configuration settings. D. In GPO2, configure the Advanced Audit Policy Configuration settings. Answer: A

QUESTION 194 You have a server that runs Windows Server 2012 R2. You have an offline image named Windows2012.vhd that contains an installation of Windows Server 2012 R2. You plan to apply several updates to Windows2012.vhd. You need to mount Windows2012.vhd to H:. Which tool should you use? A. Device Manager B. Diskpart C. Mountvol D. Server Manager Answer: B Explanation: <http://technet.microsoft.com/en-us/library/cc753321.aspx>



```
Administrator: Command Prompt - diskpart
C:\Windows\system32>diskpart
Microsoft DiskPart version 6.3.9600
Copyright (C) 1999-2013 Microsoft Corporation.
On computer: DC1

DISKPART> SELECT VDISK FILE="c:\Windows2012.vhd"
DiskPart successfully selected the virtual disk file.
DISKPART> ATTACH VDISK
100 percent completed
DiskPart successfully attached the virtual disk file.
DISKPART> LIST VOLUME

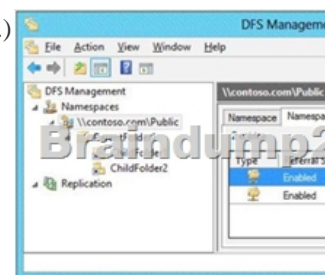
Volume ### Ltr Label Fs Type Size Status Info
-----
Volume 0 C: System Reserved NTFS Partition 350 MB Healthy System
Volume 1 D: Neu Volume NTFS Partition 126 GB Healthy Boot
Volume 2 D: Neu Volume NTFS Partition 126 GB Healthy
Volume 3 H: Neu Volume NTFS Partition 97 MB Healthy

DISKPART> SELECT VOLUME 3
Volume 3 is the selected volume.
DISKPART> ASSIGN MOUNT-H:
DiskPart successfully assigned the drive letter or mount point.
DISKPART> LIST VOLUME

Volume ### Ltr Label Fs Type Size Status Info
-----
Volume 0 C: System Reserved NTFS Partition 350 MB Healthy System
Volume 1 D: Neu Volume NTFS Partition 126 GB Healthy Boot
Volume 2 D: Neu Volume NTFS Partition 126 GB Healthy
Volume 3 H: Neu Volume NTFS Partition 97 MB Healthy


DISKPART>
```

QUESTION 195Your network contains two Active Directory domains named contoso.com and adatum.com. The contoso.com domain contains a server named Server1.contoso.com. The adatum.com domain contains a server named server2.adatum.com. Server1 and Server2 run Windows Server 2012 R2 and have the DirectAccess and VPN (RRAS) role service installed. Server1 has the default network policies and the default connection request policies. You need to configure Server1 to perform authentication and authorization of VPN connection requests to Server2. Only users who are members of AdatumGroup1 must be allowed to connect. Which two actions should you perform on Server1? (Each correct answer presents part of the solution. Choose two.) A. Network policiesB. Connection request policiesC. Create a network policy.D. Create a connection request policy. Answer: AD Explanation:\* Connection request policies are sets of conditions and settings that allow network administrators to designate which Remote Authentication Dial-In User Service (RADIUS) servers perform the authentication and authorization of connection requests that the server running Network Policy Server (NPS) receives from RADIUS clients. Connection request policies can be configured to designate which RADIUS servers are used for RADIUS accounting.\* With connection request policies, you can use NPS as a RADIUS server or as a RADIUS proxy, based on factors such as the following:The time of day and day of the weekThe realm name in the connection requestThe type of connection being requestedThe IP address of the RADIUS client QUESTION 196Your network contains an Active Directory forest named contoso.com. All servers run Windows Server 2012 R2. You need to create a custom Active Directory Application partition. Which tool should you use? A. NetdomB. NtdsutilC. DismcmdD. Dismmain Answer: BExplanation:\* To create or delete an application directory partition Open Command Prompt.Type:ntdsutilAt the ntdsutil command prompt, type:domain managementAt the domain management command prompt, type:connection At the server connections command prompt, type:connect to server ServerName At the server connections command prompt, type:quitAt the domain management command prompt, do one of the following:\* partition managementManages directory partitions for Active Directory Domain Services (AD DS) or Active Directory Lightweight Directory Services (AD LDS).This is a subcommand of Ntdsutil and Dismgmt. Ntdsutil and Dismgmt are command-line tools that are built into Windows Server 2008 and Windows Server 2008 R2./ partition management create nc %s1 %s2Creates the application directory partition with distinguished name %s1, on the Active Directory domain controller or AD LDS instance with full DNS name %s2. If you specify "NULL" for %s2, this command uses the currently connected Active Directory domain controller. Use this command only with AD DS. For AD LDS, use create nc %s1 %s2 %s3.Note:\* An application directory partition is a directory partition that is replicated only to specific domain controllers. A domain controller that participates in the replication of a particular application directory partition hosts a replica of that partition. QUESTION 197Your network contains an Active Directory domain named contoso.com. All servers run Windows Server 2012 R2. The functional level of both the domain and the forest is Windows Server 2008 R2. The domain contains a domain-based Distributed File System (DFS) namespace that is configured as shown in the exhibit. (Click the Exhibit button.)



You need to enable access-based enumeration on the DFS namespace. What should you do first? A. Install the File Server Resource Manager role service on Server3 and Server5.B. Raise the domain functional level.C. Delete and recreate the namespace.D. Raise the forest functional level. Answer: C  
Explanation: Access-based enumeration is only supported on a Domain-based Namespace in Windows Server 2008 Mode. This type of Namespace requires a minimum Windows Server 2003 forest functional level and a minimum Windows Server 2008 domain functional level.The exhibit indicates that the current namespace is a Domain-based Namespace in Windows Server 2000 Mode. To migrate a domain-based namespace from Windows 2000 Server mode to Windows Server 2008 mode, you must export the namespace to a file, delete the namespace, recreate it in Windows Server 2008 mode, and then import the namespace settings.<http://msdn.microsoft.com/en-us/library/cc770287.aspx>  
<http://msdn.microsoft.com/en-us/library/cc753875.aspx> QUESTION 198Your network contains an Active Directory domain named contoso.com. All domain controllers run Windows Server 2012 R2. The domain contains two organizational units (OUs) named OU1 and OU2 in the root of the domain.Two Group Policy objects (GPOs) named GPO1 and GPO2 are created. GPO1 is linked to OU1. GPO2 is linked to OU2. OU1 contains a client computer named Computer1. OU2 contains a user named User1. You need to ensure that the GPOs applied to Computer1 are applied to User1 when User1 logs on. What should you configure? A. The GPO StatusB. GPO linksC. The Enforced settingD. Security Filtering Answer: D  
Explanation:\* GPOs cannot be linked directly to users, computers, or security groups. They can only be linked to sites, domains and organizational units. However, by using security filtering, you can narrow the scope of a GPO so that it applies only to a single group, user, or computer.\* Security filtering is a way of refining which users and computers will receive and apply the settings in a Group Policy object (GPO). Using security filtering, you can specify that only certain security principals within a container where the GPO is linked apply the GPO. Security group filtering determines whether the GPO as a whole applies to groups, users, or computers; it cannot be used selectively on different settings within a GPO.Reference: Security filtering using GPMC QUESTION 199You have a server named Server1 that runs Windows Server 2012 R2. You promote Server1 to a domain controller. You need to view the service location (SRV) records that Server1 registers in DNS. What should you do on Server1? A. Open the Netlogon.dns file.B. Open the Srv.sys file.C. Run ipconfig /displaydns.D. Run Get-DnsServerDiagnostics. Answer: A QUESTION 200Your network contains a Hyper-V host named Server1 that hosts 20 virtual machines. You need to view the amount of memory resources and processor resources each virtual machine uses currently.Which tool should you use on Server1? A. Windows System Resource Manager (WSRM)B. Task ManagerC. Resource MonitorD. Hyper-V Manager Answer: D  
Braindump2go New Updated 70-411 Exam Dumps are Complete Microsoft 70-411 Course Coverage! 100% Real Questions and Correct Answers Guaranteed! Updated 70-411 Preparation Material with Questions and Answers PDF Instant Download:

#### Administering Windows Server 2012 R2 Exam: 70-411



Questions and Answers : 322 Q&As  
Updated: Sep 14, 2015  
\$429.99 **\$99.99**  
[PDF DEMO](#)  
[CHECK OUT](#)

**Product Description Exam Number/Code: 70-411**  
**Exam Number/Code: 70-411**

"Administering Windows Server 2012 R2 Exam", also known as 70-411 exam, is a Microsoft Certification. With the complete collection of questions and answers, Braindump2go has assembled to take you through 322 Q&As to your 70-411 Exam preparation. In the 70-411 exam resources, you will cover every field and category in Microsoft MCSA helping to ready you for your successful Microsoft Certification.

**Free Demo Download**

Braindump2go offers free demo for 70-411 exam (Administering Windows Server 2012 R2 Exam). You can check out the interface, question quality and usability of our practice exams before you decide to buy it.

☒ Printable PDF ☒ Premium VCE + VCE Simulator

**FREE DOWNLOAD: NEW UPDATED 70-411 PDF Dumps & VCE Dumps from Braindump2go:**

<http://www.braindump2go.com/70-411.html> (322 Q&As)